

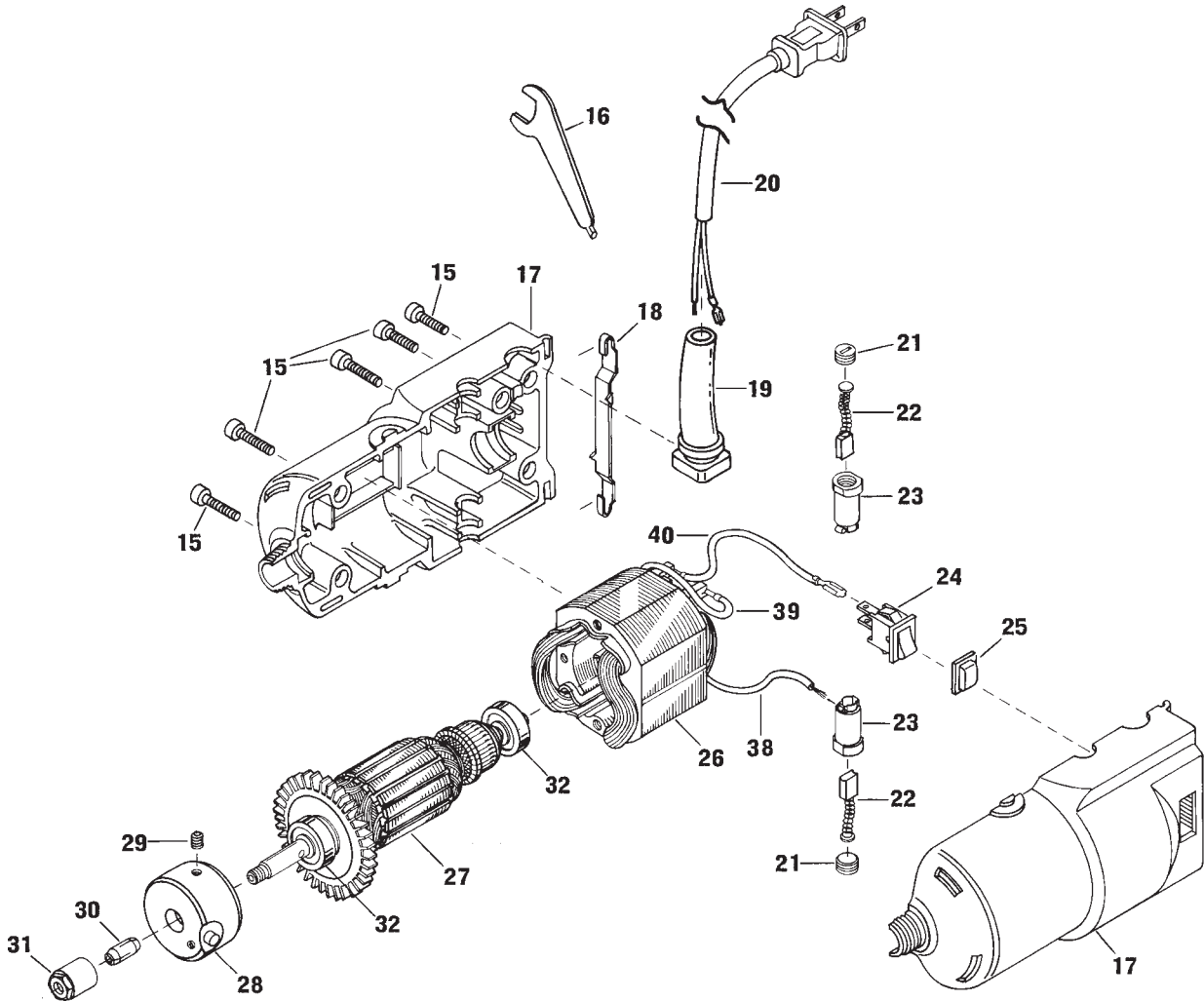


July 1996  
PRIVATE LABEL

ROTOMITE

Model 00018051801

Roto Zip  
RM1 type 1



**SERVICE NOTE:** WARRANTY repairs should not be claimed on this Model, only chargeable repairs should be performed. For WARRANTY repairs, customer must contact Roto Zip Tool Corp. 1861 Ludden Dr., Cross Plains, Wisconsin 53528. (1-800-521-1817).

Pos.	Part Number	Description {Qty.}	F/C	Pos.	Part Number	Description {Qty.}	F/C
15	2 610 326 578	Screw {5}	89	30.1	5295093	1/8" Collet	91
16	5296828	Wrench	9	30.2	5295091	1/4" Collet	91
17	5296816	Housing Assembly	71	31	5295090	Collet Nut	91
18	5296800	Wrench Holder Clip	9	32	351861	Ball Bearing {2}	56
19	2 610 313 327	Strain Relief	11	+ 33	5296823	Base Guide Screw	89
20	2 610 906 679	Cord 115V w/pos. 19	11	+ 34	5296445	Base Guide	87
21	5295064	Brush Cap	25	+ 35	5296444	Base Guide Bracket	9
22	5295121	Brush Assembly {2}	26	+ 36	5296446	Air Deflector	9
23	5295063	Brush Holder {2}	25	+ 37	5296447	Collet Plug Cover	9
24	2 610 910 115	Switch On/Off	15	38	38612	Cable	10
25	5296825	Switch Cover	9	39	38608	Cable	10
26	2 610 910 110	Field w/Cables 115V	22	40	38611	Cable	10
27	5296804	Armature w/Fan 115V w/pos. 32	AW	+ 41	5296851	Label "RotoMite"	9
28	5296822	Locking Collar Assembly	81	+ 42	5296852	Label "Roto Zip"	9
29	15139	Set Screw	89	+ 43	5297159	Nameplate	9

+ = Not Illustrated \* = As Required F/C = Failure Code AW = Refer to AW Labor Time Chart