



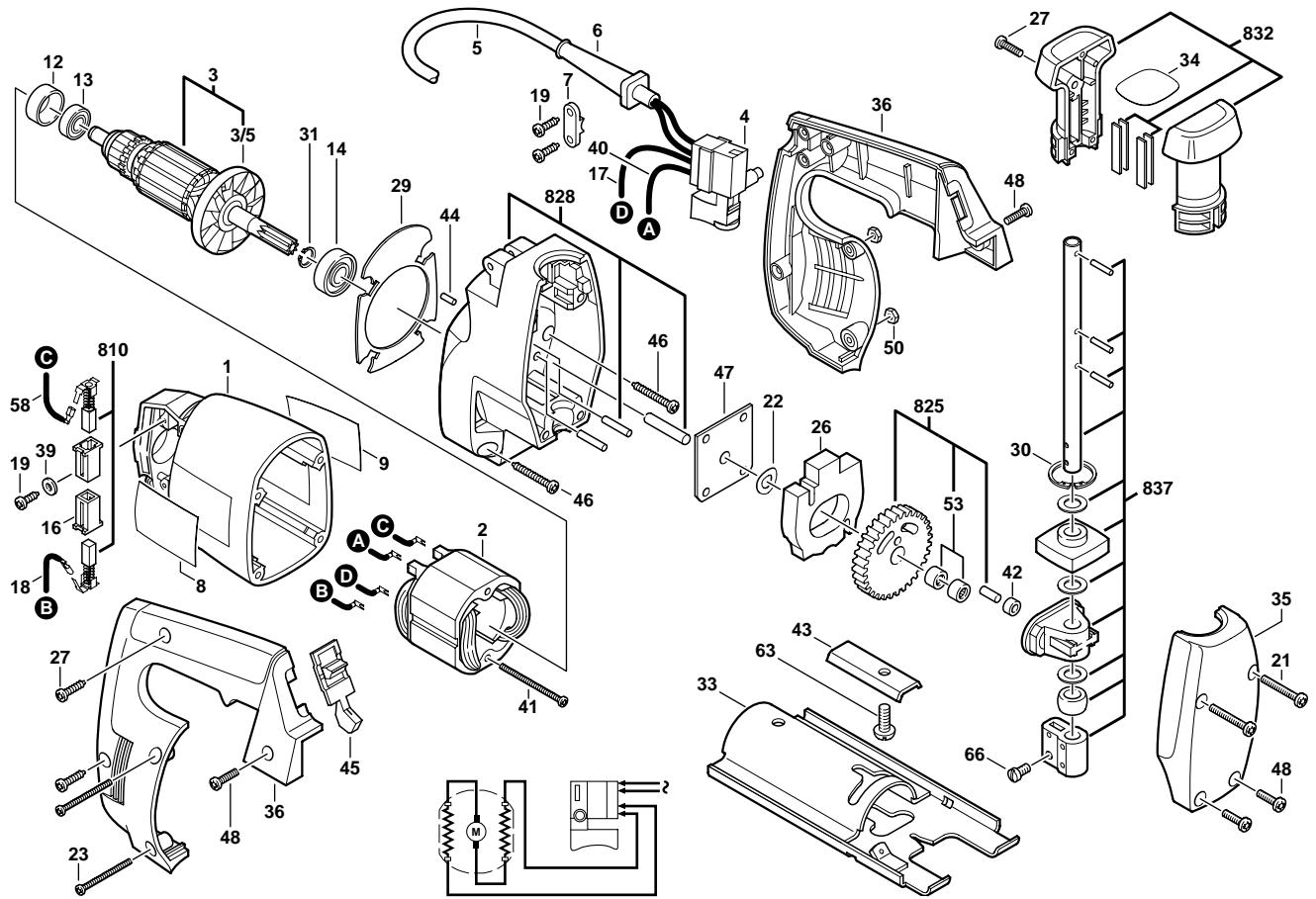
January 1998  
HEAVY DUTY

JIGSAW

Model F012457000

HD4570

type 1



Pos.	Part Number	Description {Qty}	F/C	Pos.	Part Number	Description {Qty}	F/C
1	2 610 905 349	Motor Housing	71	33	2 610 353 261	Foot Plate	88
2	2 610 326 565	Field 120V	22	34	2 610 326 658	Label	9
3	2 610 326 561	Armature w/Fan 120V	AW	35	2 610 326 514	Gear Housing Cover	70
3/5	2 610 326 560	Fan	23	36	2 610 905 348	Handle Assembly	74
4	2 610 304 120	Switch VS	17	39	2 610 303 953	Washer {2}	65
5	2 610 302 809	Cord 120V 18/2	11	40	2 610 038 673	Cable 185mm	10
6	2 610 360 176	Strain Relief	11	41	2 610 326 577	Screw {2}	89
7	2 610 064 973	Cord Clamp	89	42	2 610 326 529	Bushing	82
8	2 610 317 477	Nameplate "HD4560"	9	43	2 610 328 497	Plate	65
9	2 610 904 551	Label	9	44	2 610 317 545	Rubber Plug	9
12	2 610 320 523	Rubber Bearing Sleeve	82	45	2 610 326 502	Knob Lock	63
13	2 610 067 674	Ball Bearing	60	46	2 610 317 286	Screw {4}	89
14	2 610 020 373	Ball Bearing	61	47	2 610 326 521	Plate	65
16	2 610 320 548	Brush Holder {2}	25	48	2 610 326 579	Screw {4}	89
17	2 610 038 628	Cable 260mm	10	50	2 610 304 995	Nut {2}	89
18	2 610 038 850	Cable 45mm	10	53	2 610 322 293	Needle Bearing {2}	56
19	2 610 315 299	Screw {4}	89	58	2 610 038 851	Cable 85mm	10
21	2 610 326 580	Screw {2}	89	63	2 610 304 524	Screw	89
22	2 610 326 586	Spring Washer	65	66	2 610 347 161	Screw	89
23	2 610 328 468	Screw {2}	89	810	2 610 321 617	Brush Set	26
26	2 610 326 553	Counterweight	68	825	2 610 326 556	Gear Assembly w/pos. 53	33
27	2 610 326 578	Screw {3}	89	828	2 610 326 511	Gear Housing Assembly	72
29	2 610 326 518	Baffle	24	832	2 610 327 513	Knob Assembly	63
30	2 610 021 427	Retaining Ring	89	837	2 610 347 190	Plunger Assembly	52
31	2 610 024 924	Retaining Ring	89				

+ = Not Illustrated \* = As Required F/C = Failure Code AW = Refer to AW Labor Time Chart