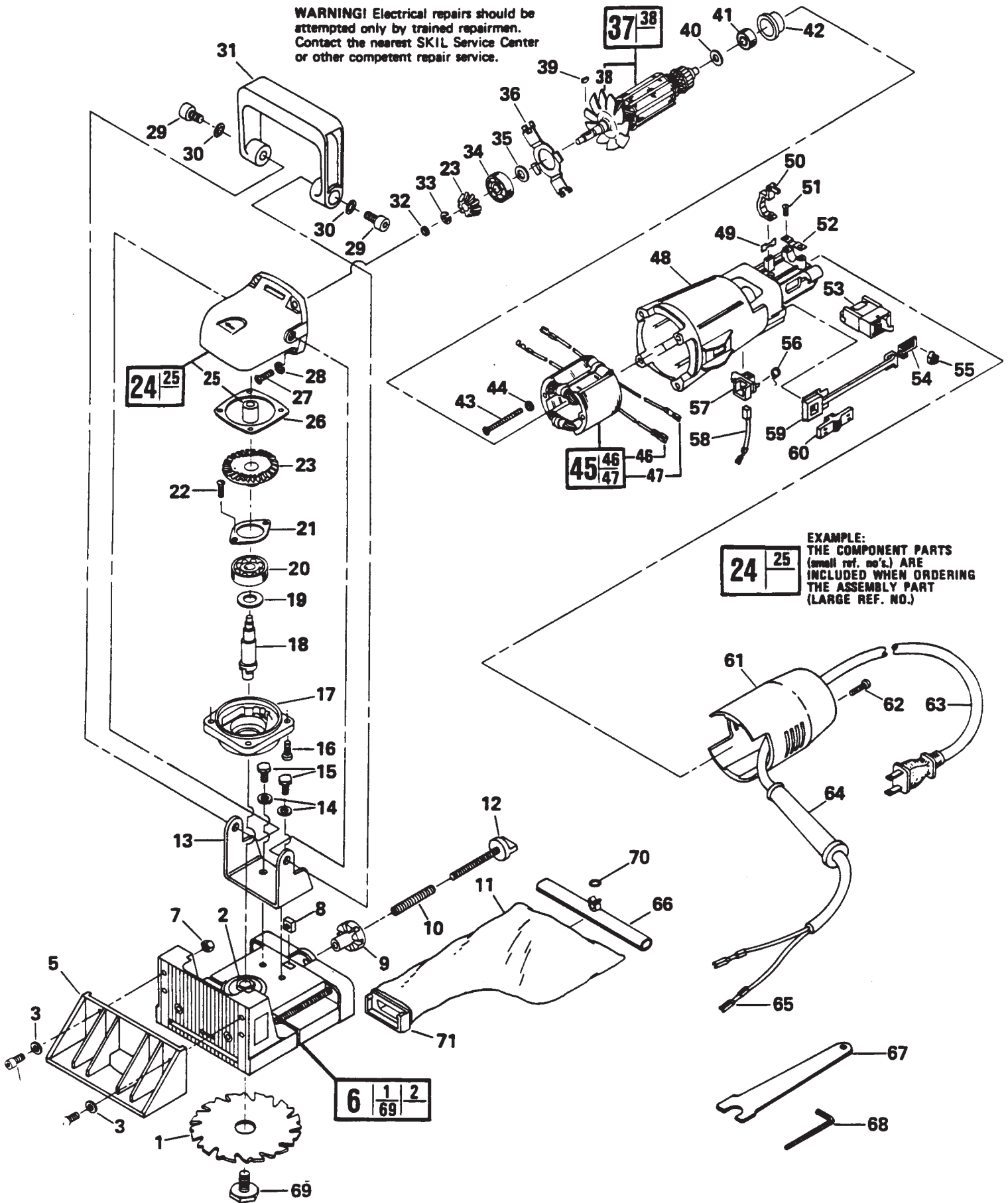


# SKIL MODEL HD1605

# TYPE 1 PLATE JOINER

**WARNING!** Electrical repairs should be attempted only by trained repairmen. Contact the nearest SKIL Service Center or other competent repair service.



**EXAMPLE:**  
THE COMPONENT PARTS  
(small ref. no.'s.) ARE  
INCLUDED WHEN ORDERING  
THE ASSEMBLY PART  
(LARGE REF. NO.)



REF. NO.	PART NO.	PART NAME	REF. NO.	PART NO.	PART NAME
1	97720	BLADE	36	350560	BEARING RETAINER
2	356718	BLADE ADAPTOR	37	350561	ARMATURE ASSEMBLY
3	356708	WASHER	38	350562	FAN
4	356707	CAP SCREW	39	318808	WOODRUFF KEY
5	356704	ADJUSTABLE FENCE	40	350590	WASHER
6	356700	BASE ASSEMBLY	41	67674	BALL BEARING
7	356706	HEX NUT (4)	42	318840	BEARING CAP
8	356709	NUT	43	350563	SCREW (2)
9	356724	DEPTH STOP KNOB	44	318830	LOCK WASHER (2)
10	356725	SPRING	45	350565	FIELD ASSEMBLY
11	356714	DUST BAG	46	350594	TERMINAL (2)
12	356713	ADJUSTMENT KNOB	47	350595	TERMINAL (2)
13	352738	MOUNTING BRACKET	48	905372	MOTOR HOUSING
14	356710	FLAT WASHER	49	350593	TERMINAL
15	356711	HEX HEAD SCREW	50	350569	SWITCH RETAINER
16	350586	SCREW (4)	51	318846	SCREW (2)
17	350553	BEARING PLATE	52	326142	CORD CLAMP
18	350554	SPINDLE	53	350575	SWITCH
19	350581	WASHER	54	350573	SWITCH ROD LINK
20	350582	BALL BEARING	55	350574	SWITCH INSULATOR
21	350555	BEARING RETAINER	56	350570	BRUSH SPRING (2)
22	350587	SCREW (2)	57	350567	BRUSH HOLDER (2)
23	350556	GEAR SET	58	350568	BRUSH ASSEMBLY
24	356729	GEAR HOUSING ASSY	59	350572	SWITCH ROD
25	350583	SLEEVE BEARING	60	350571	SWITCH BUTTON
26	* 350558	SHIM	61	905371	SWITCH COVER
27	350588	SCREW (4)	62	350589	SCREW (2)
28	327875	LOCK WASHER (4)	63	350577	CORD & PLUG
29	356733	CAP SCREW	64	318856	CORD GUARD
30	356735	BELLEVILLE WASHER	65	350594	TERMINAL (2)
31	356727	HANDLE	66	356726	BAG SUPPORT
32	□ 318831	NUT	67	357504	WRENCH—SPINDLE LOCK
33	318832	LOCK WASHER	68	356715	WRENCH—ALLEN
34	350584	BALL BEARING	69	356719	BLADE BOLT
35	350564	WASHER	70	15629	O—RING
			71	358020	BAG CONNECTOR

**SPECIAL NOTES:**

\* AS REQUIRED FOR .003" — .014" BACKLASH

□ TIGHTEN UNTIL LOCK WASHER BECOMES FLAT, THEN LOOSEN ½ TURN.