

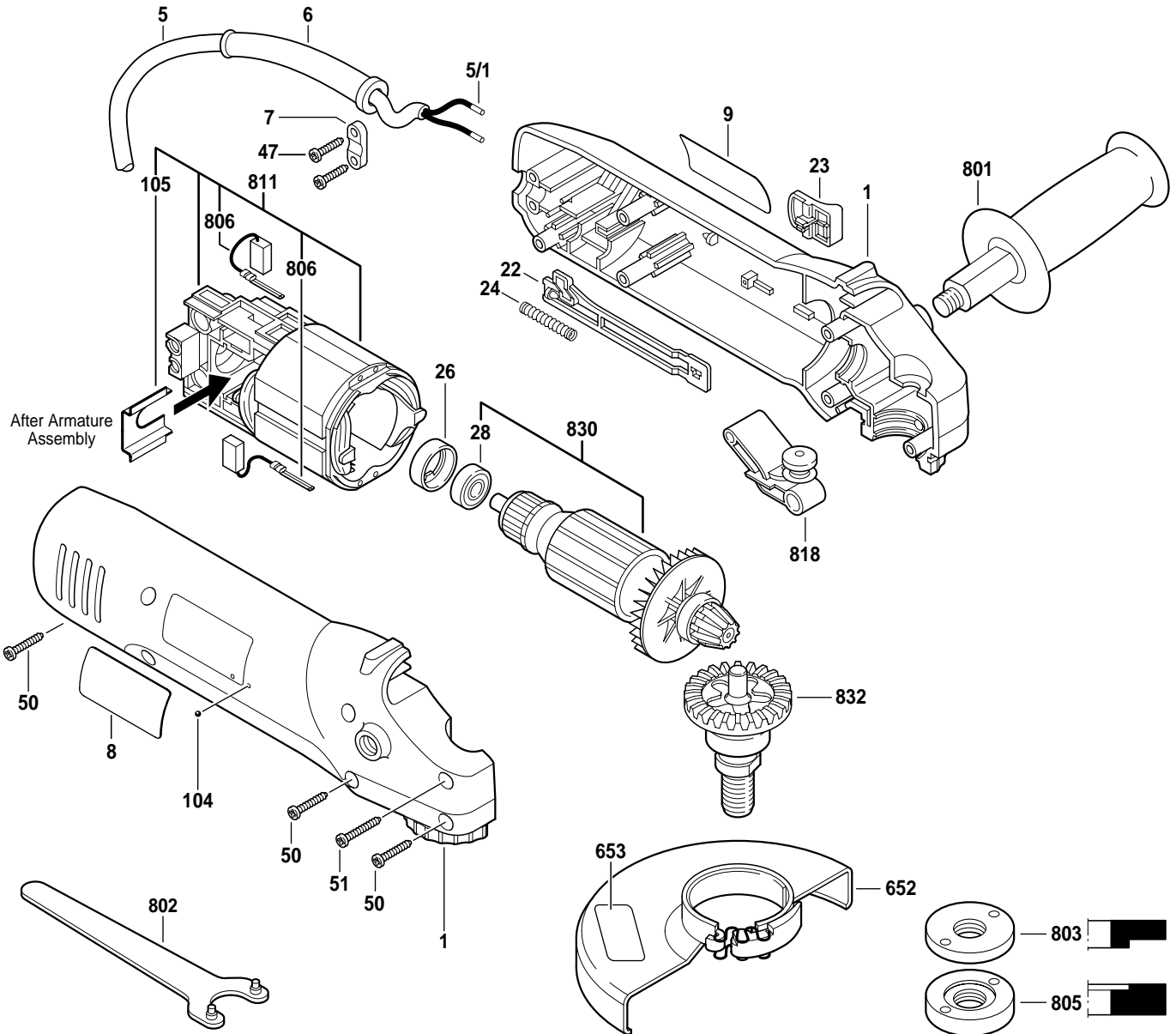


October 2001  
CONSUMER

4-1/2" MINI GRINDER

Model F012932000

9320



Pos.	Part Number	Description {Qty.}	F/C	Pos.	Part Number	Description {Qty.}	F/C
1	1 605 108 219	Housing Assembly	71	104	1 619 P00 040	Ball	66
5	3 604 460 555	Cord	11	105	1 600 591 034	Bracket	9
5/1	1 900 452 012	Terminal {2}	10	652	1 605 510 306	Guard	92
6	2 600 703 013	Strain Relief	11	653	1 601 118 C35	Label	9
7	2 601 035 001	Cord Clamp	89	801	1 602 025 027	Auxiliary Handle	9
8	1 601 118 C36	Nameplate	9	802	1 607 950 043	Spanner Wrench	9
9	1 601 106 927	Label	9	803	2 610 992 248	Inner Flange 5/8"-11	91
22	1 602 319 014	Switch Slide	64	805	2 610 910 341	Outer Flange 5/8"-11	91
23	3 602 025 024	Switch Button	9	806	1 607 000 994	Brush Set	26
24	1 604 611 026	Switch Spring	27	811	1 607 000 722	Field Assembly	22
26	1 600 502 020	Rubber Bearing Sleeve	82			w/pos. 105, 806	
28	1 600 905 021	Ball Bearing	60	818	1 607 000 993	Spindle Lock Assembly	81
47	2 914 401 019	Screw {2}	89	830	1 607 000 997	Armature Assembly	AW
50	2 914 201 707	Screw {6}	89			w/pos. 28	
51	2 914 201 709	Screw	89	832	1 607 000 708	Output Assembly	51

+ = Not Illustrated \* = As Required F/C = Failure Code AW = Refer to AW Labor Time Chart