

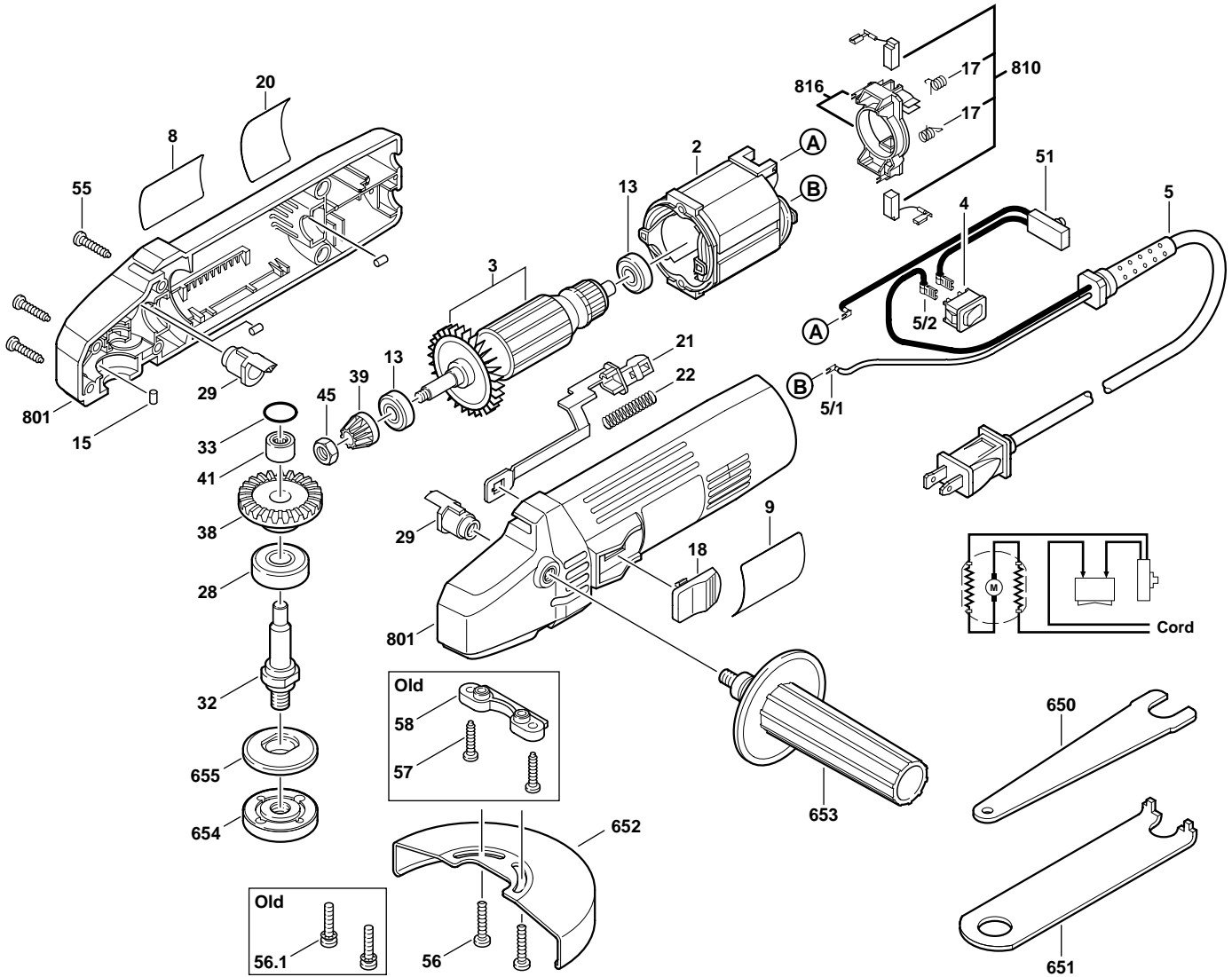


August 1997  
CONSUMER

4-1/2" MINI GRINDER

Model F012931000

9310  
type 1



Pos.	Part Number	Description {Qty.}	F/C	Pos.	Part Number	Description {Qty.}	F/C
2	2 610 335 226	Field 120V		39	1 606 333 605	Bevel Gear	33
3	2 610 384 330	Armature w/Fan 120V	AW	41	2 610 903 764	Needle Bearing	32
4	2 610 910 115	Switch On/Off		45	2 610 902 381	Nut	89
5	2 610 313 328	Cord 120V 18/2		51	2 610 904 741	Circuit Breaker	16
5/1	2 610 315 756	Terminal {2}		55	2 610 348 622	Screw {6}	89
5/2	2 610 352 788	Terminal {2}		56	2 610 992 203	Screw {2}	89
8	2 610 902 196	Nameplate		56.1	2 610 352 140	Screw {2} (old)	89
9	2 610 902 197	Label "9310"		57	2 610 348 622	Screw {2} (old)	89
13	2 610 001 147	Ball Bearing {2}		58	2 610 903 776	Guard Mount (old)	9
15	2 610 350 103	Rubber Pin {3}		650	2 610 357 504	Spindle Wrench	9
17	2 610 353 928	Brush Spring {2}		651	2 610 904 710	Wrench	9
18	2 610 358 652	Switch Button		652	2 610 903 777	Guard 4-1/2"	92
20	2 610 906 753	Label "Warning"		653	2 610 903 774	Handle	74
21	2 610 903 770	Switch Slide		654	2 610 904 709	Outside Flange M10 x 1.5	91
22	2 610 903 771	Switch Spring		655	2 610 904 706	Inner Flange	91
28	2 610 904 744	Ball Bearing		801	2 610 992 229	Housing Assembly w/pos. 56	71
29	2 610 903 766	Handle Mount {2}		810	2 610 353 931	Brush & Spring Set (set contains 2 ea.)	26
32	2 610 904 704	Spindle M10 x 1.5		816	2 610 904 740	Brush Holder Assembly	25
33	2 610 015 871	O-Ring					
38	2 610 904 711	Crown Gear					

+ = Not Illustrated \* = As Required F/C = Failure Code AW = Refer to AW Labor Time Chart