



April 1998
CONSUMER

10" TABLE SAW

Model F01234004A

3400

open for tool illustration

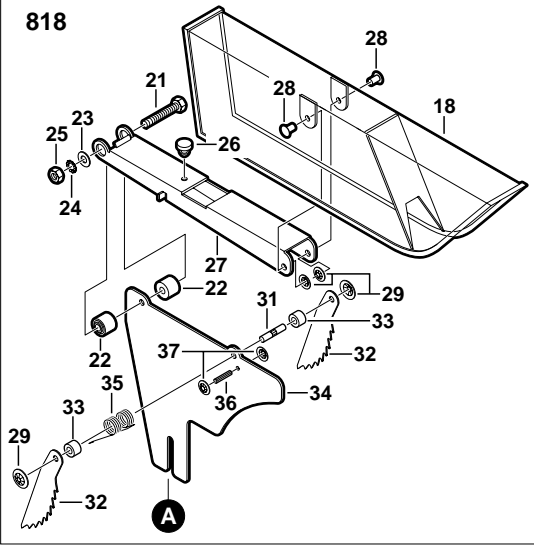
Pos.	Part Number	Description {Qty}	F/C	Pos.	Part Number	Description {Qty}	F/C
1	2 610 358 924	Motor Housing	71	57	2 610 358 901	Screw	89
2	2 610 358 925	Field 120V	22	58	2 610 358 900	Pointer	9
3	2 610 905 924	Armature w/Fan 120V	AW	59	2 610 358 889	Rip Fence Housing	9
4	2 610 358 111	Switch On/Off	15	60	2 610 358 888	Rip Fence Body	9
5	2 610 905 902	Cord 120V	11	61	2 610 358 887	Rear Sliding Pad	88
6	2 610 358 840	Strain Relief	11	62	2 610 358 886	Spring	27
7	2 610 358 842	Cord Clamp	89	63	2 610 358 885	Clamp	80
8	2 610 993 778	Nameplate	9	64	2 610 358 884	Rod	9
13	2 610 015 747	Ball Bearing	60	65	2 610 358 906	Miter Guage Knob	63
14	2 610 017 349	Ball Bearing	61	66	2 610 358 907	Washer	65
18	2 610 358 800	Guard	91	67	2 610 358 910	Miter Guage Body	9
19	2 610 990 536	Base	9	68	2 610 358 911	Pin	66
20	2 610 909 881	Label "Warning"	9	69	2 610 358 913	Sliding Pad	88
21	2 610 702 414	Screw	89	70	2 610 358 832	Screw {9}	89
22	2 610 358 803	Spacer {2}	82	71	2 610 990 539	Screw	89
23	2 610 358 801	Washer	65	72	2 610 990 540	Pointer	9
24	2 610 358 802	Washer {6}	65	73	2 610 358 912	Guide Bar	9
25	2 610 304 772	Nut {2}	89	74	2 610 358 858	Arbor Nut	89
26	2 610 358 804	Rubber Pad	88	75	2 610 358 857	Outer Flange	91
27	2 610 905 900	Bracket	9	77	2 610 358 914	Shaft	52
28	2 610 358 806	Pivot {2}	54	78	2 610 358 915	Key	66
29	2 610 358 807	Push Nut {4}	89	79	2 610 015 361	Ball Bearing	61
31	2 610 358 811	Pin	66	80	2 610 358 916	Retaining Ring	89
32	2 610 358 808	Anti-Kickback Pawl {2}	80	81	2 610 358 920	Screw & Washer {6}	89
33	2 610 358 809	Spacer {2}	82	82	2 610 358 917	Bearing Cap	56
34	2 610 358 814	Splitter	9	83	2 610 358 918	Bearing Housing	73
35	2 610 358 810	Spring	27	84	2 610 358 919	Spindle Gear	32
36	2 610 358 812	Roll Pin	66	85	2 610 358 922	Needle Bearing	56
37	2 610 358 813	Push Nut {2}	89	86	2 610 908 278	Gear Housing	72
38	2 610 703 214	Screw	89	87	2 610 358 926	Screw {2}	89
39	2 610 910 013	Washer {2}	65	88	2 610 358 936	Washer {2}	65
40	2 610 358 816	Splitter Block	9	89	2 610 358 927	Washer	65
41	2 610 358 819	Screw {4}	89	90	2 610 358 928	Screw {3}	89
42	2 610 910 012	Splitter Bracket	9	91	2 610 351 107	Nut {2}	89
43	2 610 910 015	Carriage Bolt	89	92	2 610 358 937	Brush Holder Pad {2}	25
44	2 610 355 325	Lock Washer	89	93	2 610 358 935	Rear Motor Cover	70
45	2 610 358 821	Wing Nut	89	94	2 610 358 932	Connector	10
46	2 610 358 897	Rip Fence Handle	74	95	2 610 990 542	Cable	10
47	2 610 044 563	Nut	89	96	2 610 358 934	Strain Relief	11
48	2 610 358 895	Cam Pin	66	97	2 610 358 822	Insert	9
49	2 610 358 896	Pin	66	98	2 610 358 823	Screw {2}	89
50	2 610 358 894	Roll Pin	66	99	2 610 358 824	Nut {2}	89
51	2 610 910 017	Cam	80	100	2 610 358 826	Screw {6}	89
52	2 610 358 890	Lever	64	101	2 610 358 827	Screw	89
53	2 610 358 891	Front Clamp	80	102	2 610 358 828	Screw	89
54	2 610 358 892	Screw {2}	89	103	2 610 905 907	Table	88
55	2 610 358 898	Screw	89	104	2 610 358 451	Scale	9
56	2 610 358 899	Spring	27	105	2 610 358 876	Nut {15}	89

+ = Not Illustrated * = As Required F/C = Failure Code AW = Refer to AW Labor Time Chart

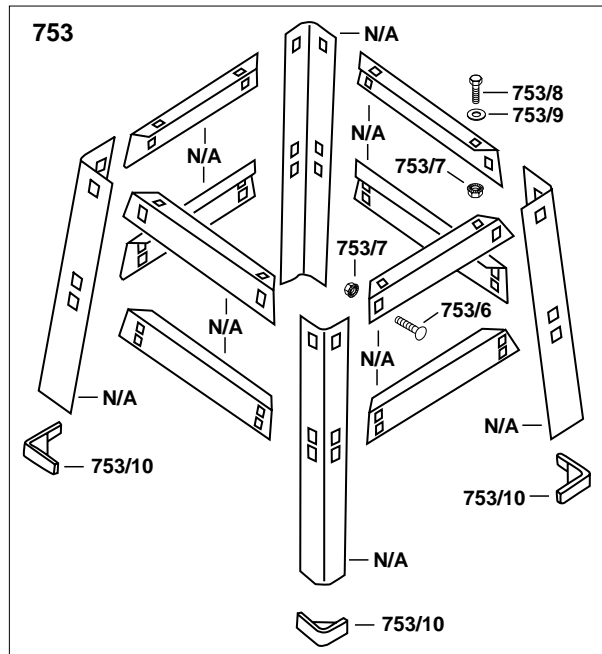
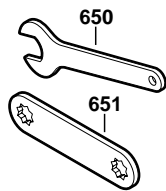
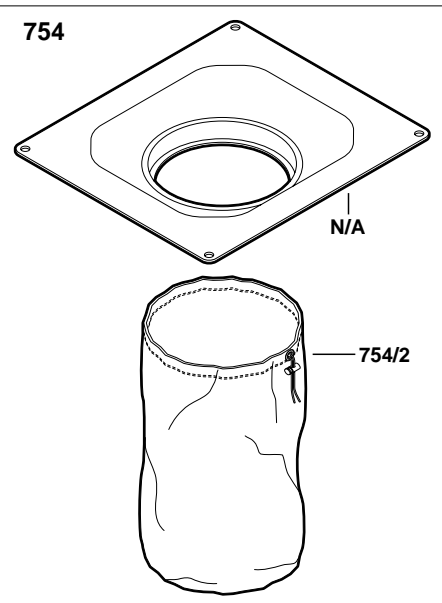
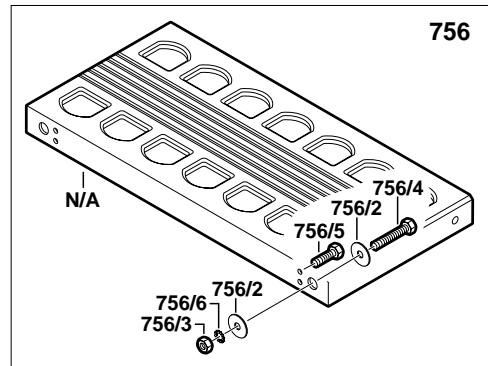
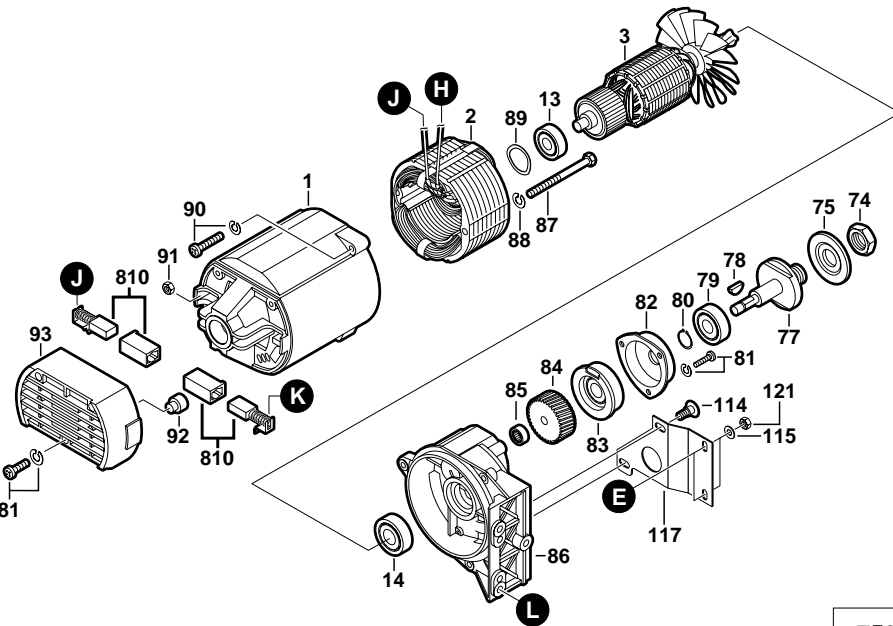
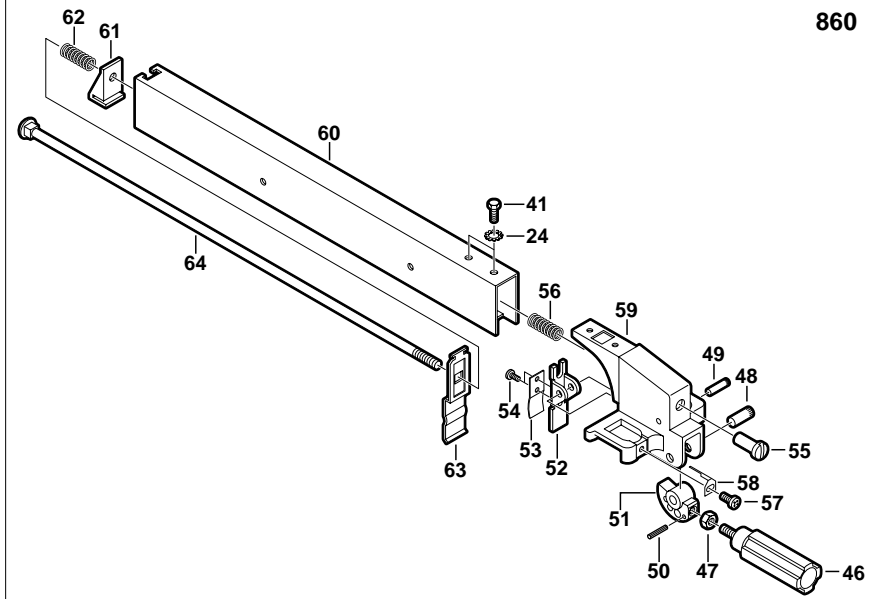
Pos.	Part Number	Description {Qty}	F/C	Pos.	Part Number	Description {Qty}	F/C
106	2 610 358 867	Strap {2}	80	145	2 610 306 005	Screw {2}	89
107	2 610 905 903	Rod	5	146	2 610 026 248	Lock Washer {2}	89
108	2 610 903 744	Strap {4}	80	147	2 610 358 881	Pointer	9
109	2 610 905 904	Bracket	9	148	2 610 990 549	Deflector Plate	9
110	2 610 358 863	Screw	89	149	2 610 994 251	Spacer	82
111	2 610 358 865	Saddle	9	150	2 610 994 252	Bolt	89
112	2 610 905 908	Screw {3}	89	151	2 610 358 902	Rail	9
113	2 610 358 882	Roll Pin {2}	66	152	2 610 358 903	End Cap {2}	9
114	2 610 908 268	Screw {2}	89	153	2 610 905 909	Screw {4}	89
115	2 610 908 270	Washer {2}	65	154	2 610 358 904	Spacer {4}	82
116	2 610 908 271	Screw {2}	89	650	2 610 358 853	Arbor Wrench	9
117	2 610 908 269	Support Bracket	62	651	2 610 358 854	Nut Wrench	89
118	2 610 990 544	Motor Bracket	62	753	80093	Table Saw Stand	9
119	2 610 910 044	Screw	89			w/pos. 753/6 - 753/10	
120	2 610 358 860	Screw {3}	89	753/6	2 610 016 325	Bolt {24}	89
121	2 610 908 272	Nut {2}	89	753/7	2 610 994 262	Nut {28}	89
122	2 610 358 861	Screw {2}	89	753/8	2 610 967 194	Bolt {4}	89
123	2 610 358 862	Spacer {2}	82	753/9	2 610 909 178	Washer {4}	65
124	2 610 358 869	Retaining Ring	89	753/10	2 610 994 283	Foot {4}	9
125	2 610 901 978	Spacer	82	754	80099	Dust Bag Kit	9
126	2 610 358 874	Rocker Bar	9			w/pos. 754/2	
127	2 610 358 877	Nut {2}	89	754/2	2 610 990 516	Dust Bag	9
128	2 610 358 878	Washer	65	756	80089	Table Extension Kit	9
129	2 610 358 879	Washer	65			w/pos. 756/2 - 756/7	
130	2 610 358 868	Pin	66	756/2	2 610 351 293	Washer {6}	65
131	2 610 990 545	Mounting Plate	62	756/3	2 610 304 772	Nut {3}	89
132	2 610 903 733	Spring	27	756/4	2 610 702 414	Bolt {3}	89
133	2 610 990 546	Adjustment Wheel	63	756/5	2 610 905 936	Bolt {3}	89
134	2 610 358 838	Knob	63	756/6	2 610 911 906	Lock Washer {3}	65
135	2 610 990 547	Screw	89	+ 756/7	2 610 902 140	Scale	9
136	2 610 358 833	Washer {2}	65	810	2 610 358 968	Brush & Holder Set	25
137	2 610 990 548	Handle Lock	80	818	2 610 358 943	Blade Guard Assembly	92
138	2 610 358 844	Screw {3}	89			w/pos. 18, 21 - 29, 31 - 37	
139	2 610 910 018	Switch Cover	9	860	2 610 994 267	Rip Fence Assembly	87
140	2 610 358 831	Clamp Plate	89			w/pos. 24, 41, 46 - 64	
141	2 610 358 846	Rubber Foot {4}	9	867	2 610 994 255	Miter Guage Assembly	87
142	2 610 358 841	Screw {2}	89			w/pos. 65 - 73	
143	2 610 909 882	Label "Warning"	9	N/A	Not Available Separately		
144	2 610 358 830	Screw {4}	89				


Service Notes:

818



860



	April 1997 TECHNICAL BULLETIN	Section 7 - Saws	model(s) affected
		"gear housing inspection"	3400

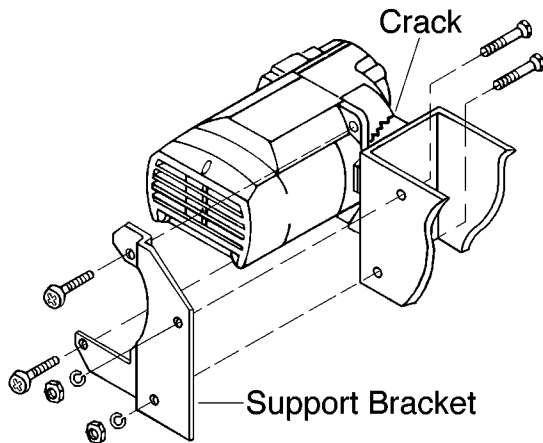
To: All Authorized and Factory Service Centers,
 Field Sales and Internal Support Personnel

Re: Gear Housing Inspection

Please insert this bulletin into the "Technical Bulletins" section of your Skil Parts Manual, only after making any additions or notes to your Illustrated Parts List(s).

Please inspect **ALL** 3400 Table Saws for cracks in the 358921 Gear Housing. If cracks are found, replace Gear Housing and install a 2 610 908 265 Bracket Kit. These parts are to be installed under Warranty with No Charge to the customer. Other unrelated repairs may be charged as necessary.

This Bracket Kit should be installed on **ALL** Saws that are not already equipped with the Support Bracket. Again, this is to be handled under Warranty with No Charge to the customer.



2 610 908 265 Bracket Kit contains:

<u>Part Number</u>	<u>Description</u>	<u>Qty.</u>
N/A	Support Bracket	1
350142	Screw	2
355325	Lock Washer	2
11489	Nut	2

All questions should be directed to your Authorized Service Manager.

Gail D. Fred

Gail D. Fred
 Product Service Department

SKIL [®]	October 1998	Section 7 - Saws	model(s) affected
	TECHNICAL BULLETIN	"Newly Released Service Parts"	3400

To: All Authorized and Factory Service Centers,
Field Sales and Internal Support Personnel

Re: Newly Released Service Parts

Please insert this bulletin into the "Technical Bulletins" section of your Skil Parts Manual, only after making any additions or notes to your Illustrated Parts List(s).

Please be advised that the following parts are now available for the Outfeed Attachment used with the Skil model 3400 Table Saw.

<u>Part Number</u>	<u>Description {Qty.}</u>
2 610 992 373	Table
2 610 992 374	Mounting Bracket {2}
2 610 992 379	Rod {2}
2 610 992 380	Retaining Ring {6}
2 610 992 381	Cotter Pin {2}
2 610 328 617	Screw {4}
2 610 995 470	Label "Warning"

All questions should be directed to your Authorized Service Manager.

Product Service Department