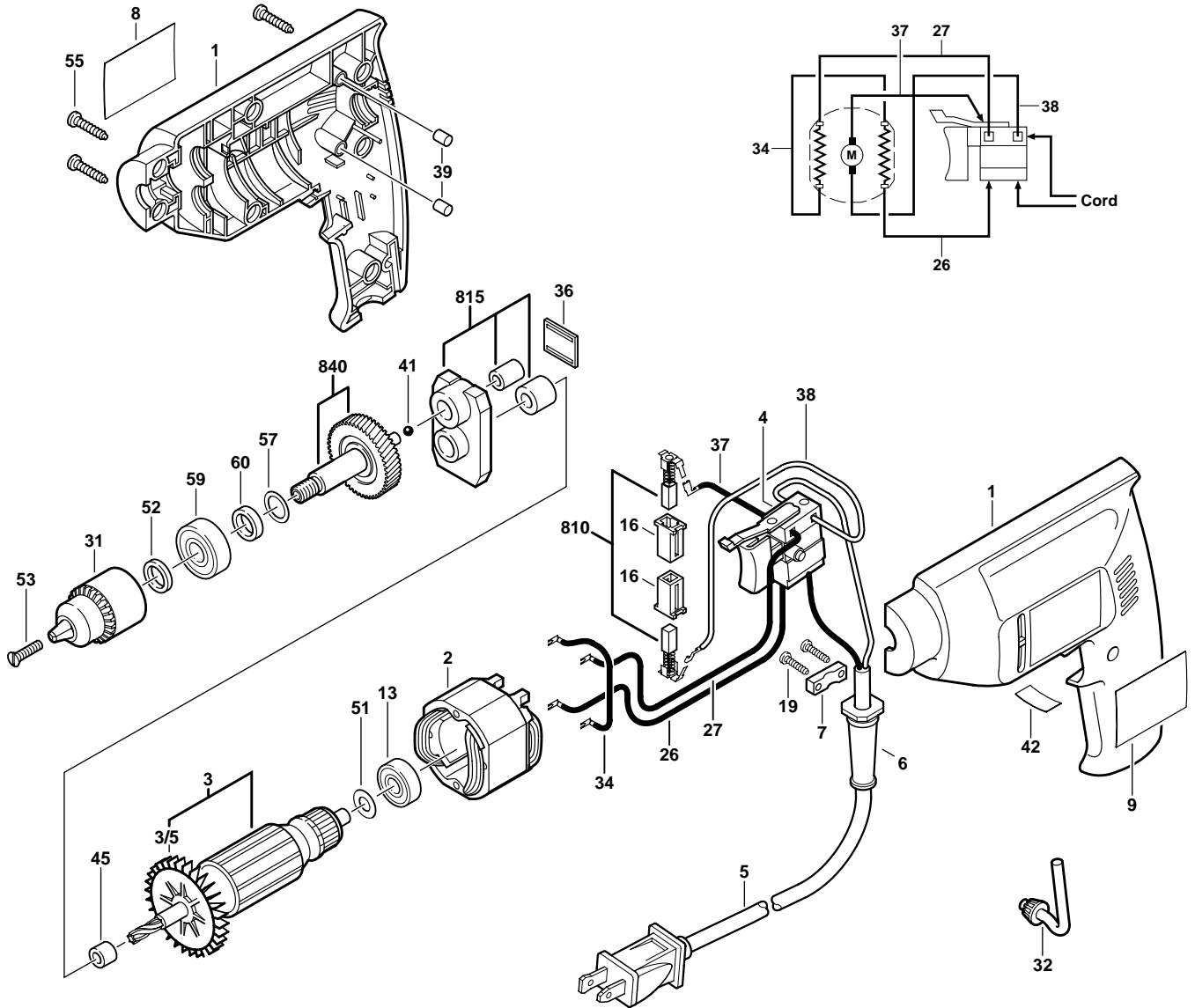


SKIL

August 1997
PRIVATE LABEL

1/4" DRILL
Model F012651052

Government
6510
type 1 code 52



Pos.	Part Number	Description {Qty.}	F/C	Pos.	Part Number	Description {Qty.}	F/C
1	2 610 908 283	Housing Assembly	71	36	2 610 347 349	Thrust Plate	65
2	2 610 315 863	Field 120V	22	37	2 610 039 904	Cable 130mm	10
3	2 610 350 013	Armature w/Fan 120V	AW	38	2 610 320 494	Cable 130mm	10
3/5	2 610 346 332	Fan	23	39	2 610 028 780	Rubber Plug {2} (old)	9
4	2 610 346 603	Switch On/Off - Rev.	15	41	2 610 002 144	Ball	66
5	2 610 350 903	Cord 120V 18/2	11	42	2 610 902 145	Label "Fwd/Rev"	9
6	2 610 360 176	Strain Relief	11	45	2 610 348 065	Spacer	82
7	2 610 064 973	Cord Clamp	89	51	2 610 017 016	Washer	65
8	2 610 351 065	Nameplate	9	52	2 610 017 642	Felt Seal	77
9	2 610 351 066	Label "Caution"	9	53	2 610 068 006	Rev. Screw	85
13	2 610 010 409	Ball Bearing	60	55	2 610 326 578	Screw {7}	89
16	2 610 320 548	Brush Holder {2}	25	57	2 610 313 808	Washer	65
19	2 610 315 386	Screw {2}	89	59	2 610 350 311	Ball Bearing	51
26	2 610 038 675	Cable 160mm	10	60	2 610 350 307	Spacer	82
27	2 610 038 922	Cable 140mm	10	810	2 610 321 617	Brush Set	26
31	2 610 350 548	1/4" Keyed Chuck	91	815	2 610 358 017	Bearing Plate Assembly	38
32	2 610 351 010	Chuck Key	9	840	2 610 350 305	Spindle 3/8"-24 w/Gear	52
34	2 610 038 609	Cable 80mm	10				

+ = Not Illustrated * = As Required F/C = Failure Code AW = Refer to AW Labor Time Chart

S-B Power Tool Company Chicago IL 60646-5999