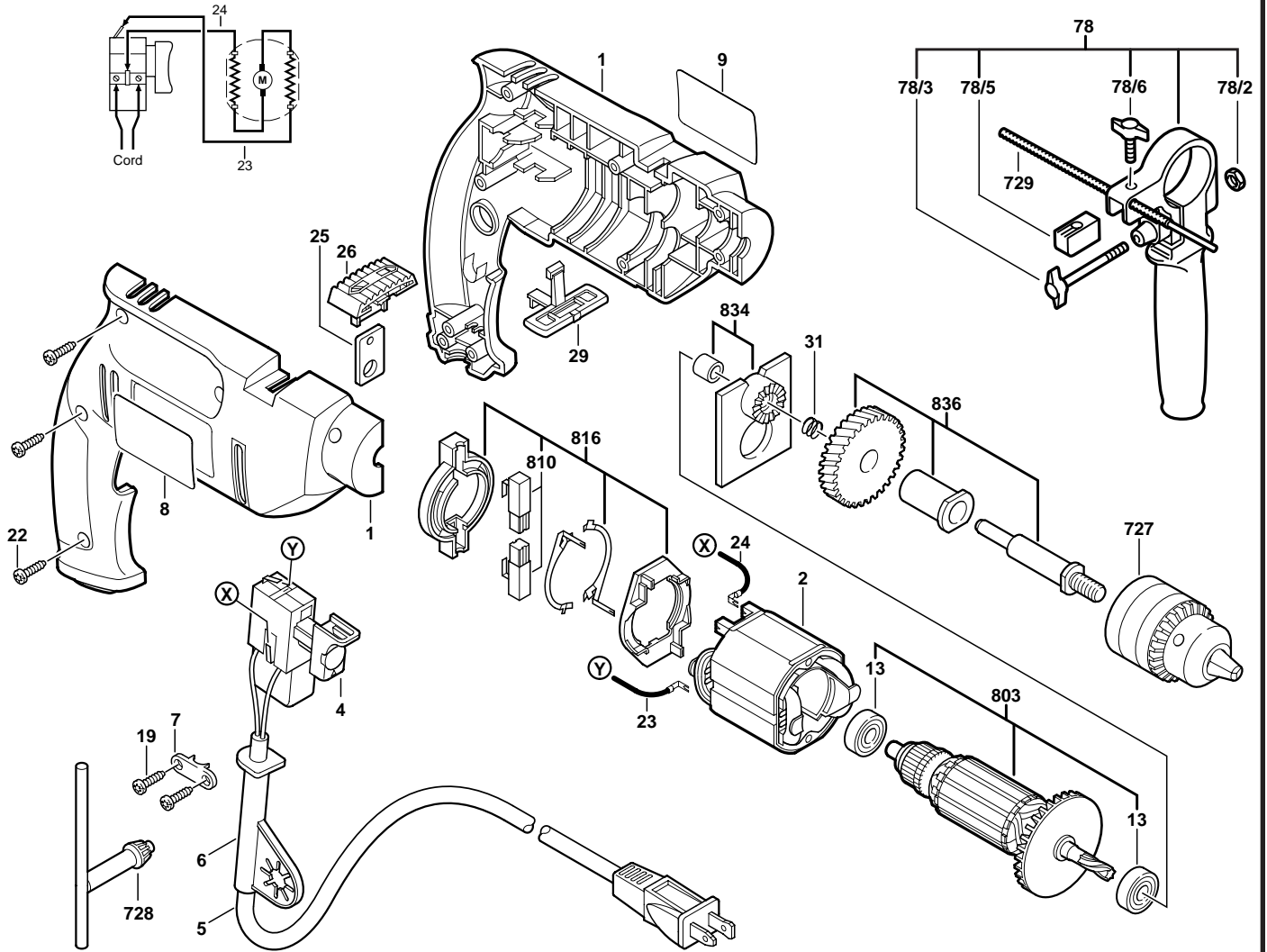




April 1998
CONSUMER

1/2" HAMMER DRILL
Model F012644300

6443



Pos.	Part Number	Description {Qty}	F/C	Pos.	Part Number	Description {Qty}	F/C
1	2 610 386 622	Housing Assembly	71	78	1 612 025 024	Auxiliary Handle Assy. w/pos. 78/2 - 78/6	9
2	2 610 335 218	Field 120V	22	78/2	2 915 011 007	Nut	89
4	2 610 387 295	Switch VS	17	78/3	1 613 480 007	Wing Screw	89
5	2 610 350 903	Cord 120V 18/2	11	78/5	2 608 040 014	Clamping Plate	80
6	2 600 707 060	Strain Relief	11	78/6	1 613 480 008	Wing Screw	89
7	2 610 064 973	Cord Clamp	89	727	1 608 571 069	1/2" Chuck w/Key	91
8	2 610 993 765	Nameplate "6443"	9	728	3 608 571 511	Chuck Key	91
9	2 610 993 764	Label "Slugger"	9	729	1 613 001 010	Depth Guage	9
13	3 600 900 512	Ball Bearing {2}	61	803	2 610 387 282	Armature w/Fan 120V w/pos. 13	AW
19	2 610 990 024	Screw {2}	89	810	2 610 385 090	Brush Set	26
22	2 610 374 919	Screw {7}	89	816	2 610 387 292	Brush Holder Assembly w/pos. 810	25
23	2 610 386 631	Cable 195mm	10	834	2 610 387 901	Intermediate Plate	38
24	2 610 386 632	Cable 175mm	10	836	2 610 387 047	Spindle w/Gear 1/2"-20	52
25	2 610 386 608	Plate	65				
26	2 610 387 294	Hammer Lever	64				
29	2 610 387 293	Reverse Lever	64				
31	2 610 386 630	Spring	27				

+ = Not Illustrated * = As Required F/C = Failure Code AW = Refer to AW Labor Time Chart