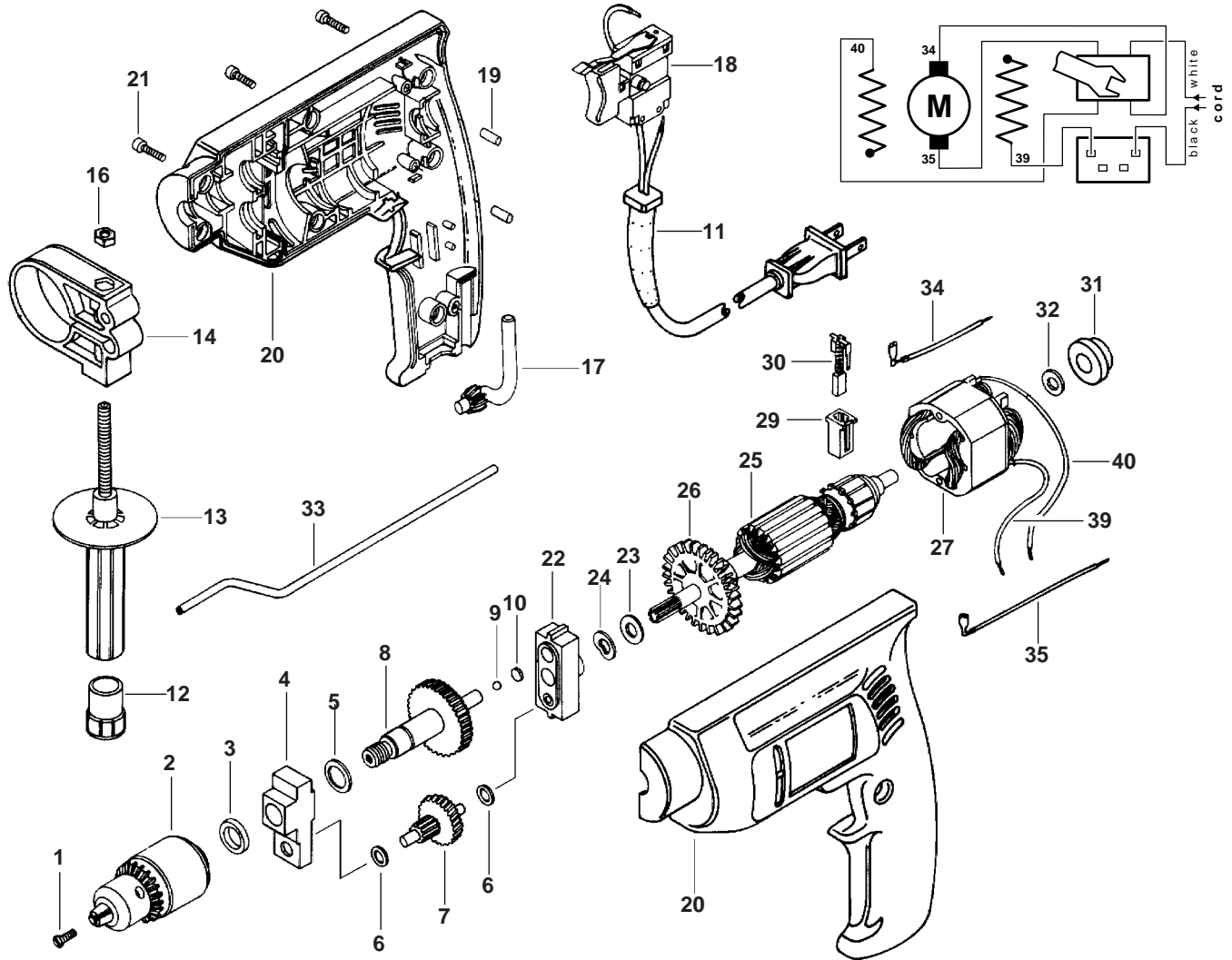




July 1996  
CONSUMER

1/2" DRILL  
Model 00063460001

6346  
type 1



Pos.	Part Number	Description {Qty.}	F/C	Pos.	Part Number	Description {Qty.}	F/C
1	315857	Reversing Screw	85	21	2 610 326 578	Screw {7}	89
2	300961	Chuck 3/8"	91	22	352355	Bearing Flange Assy.	38
3	17642	Felt Seal	77	23	27445	Washer	65
4	347305	Bushing Assembly	51	24	26126	Spring Washer	65
5	2 610 313 808	Washer	65	25	352027	Armature w/Fan 120V	AW
6	309996	Washer {2}	65	26	346332	Fan	23
7	357542	Intermediate Gear	31	27	315863	Field 120V	22
8	352367	Spindle w/Gear Assy.	52	29	2 610 320 548	Brush Holder {2}	25
9	2144	Ball	66	30	2 610 321 617	Brush Set	26
10	347351	Shim	65	31	351348	Bushing Assembly	60
11	313328	Cord 120V	11	32	29973	Washer	65
12	347365	Handle Cap	9	33	309525	Depth Guage	87
13	96100	Auxiliary Handle Assy. w/pos. 12, 14, 16	9	34	39904	Cable	10
14	372068	Clamp	80	35	320494	Cable	10
16	372067	Nut	89	+ 36	902145	Label "Fwd/Rev"	9
17	304970	Chuck Key	9	+ 37	2 610 911 691	Label "6346"	9
18	346618	Switch VSR	17	+ 38	2 610 911 690	Nameplate	9
19	28780	Rubber Pin {3}	88	39	38675	Cable	10
20	357532	Motor Housing Assy.	71	40	38922	Cable	10

+ = Not Illustrated \* = As Required F/C = Failure Code AW = Refer to AW Labor Time Chart