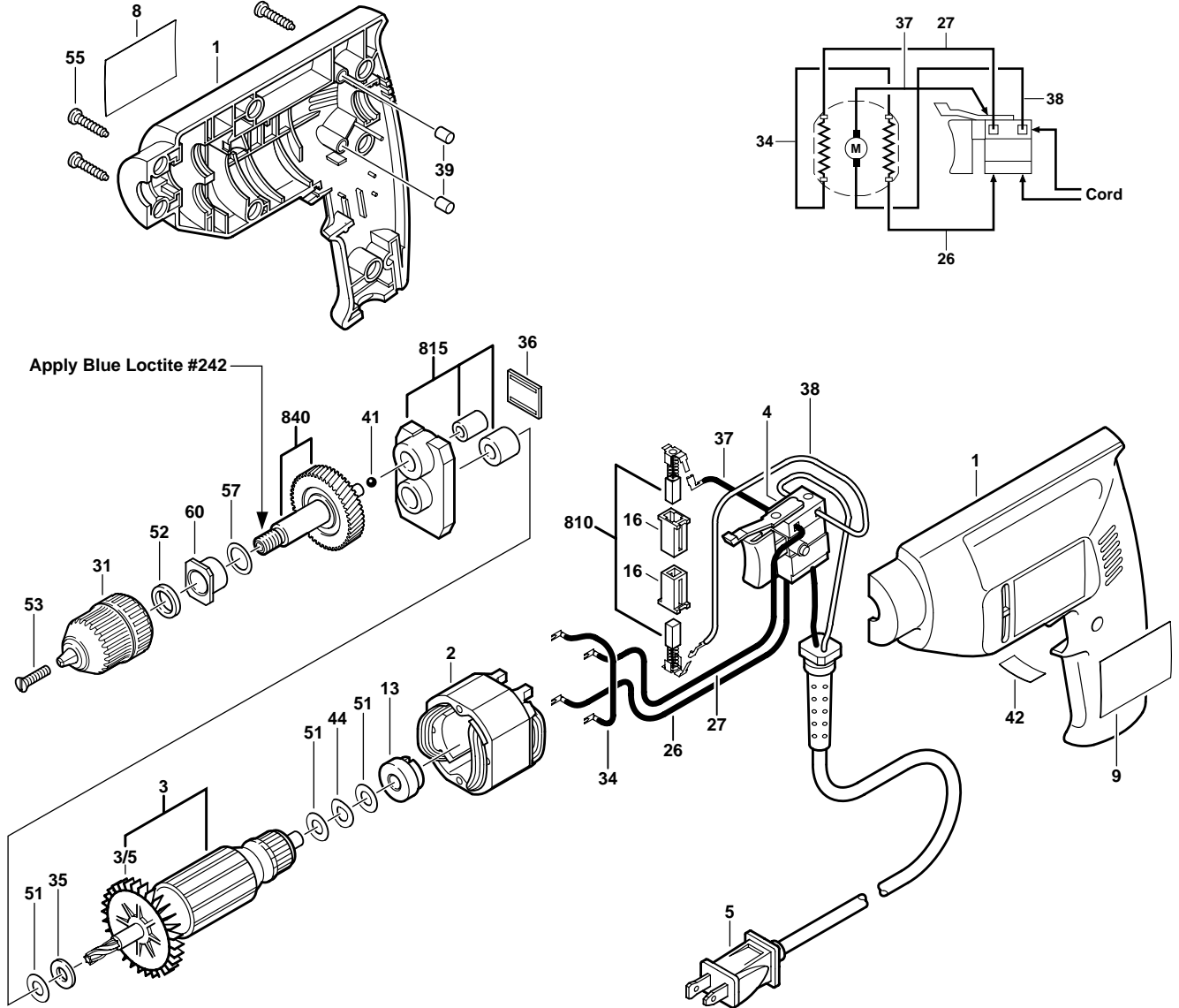




August 1997
CONSUMER

3/8" DRILL
Model F012622600

6226
type 1



Pos.	Part Number	Description {Qty.}	F/C	Pos.	Part Number	Description {Qty.}	F/C
1	2 610 910 187	Housing Assembly	71	37	2 610 039 904	Cable 130mm	10
2	2 610 315 863	Field 120V	22	38	2 610 320 494	Cable 130mm	10
3	2 610 350 131	Armature w/Fan 120V	AW	39	2 610 028 780	Rubber Plug (old) {2}	9
3/5	2 610 346 332	Fan	23	41	2 610 002 144	Ball	66
4	2 610 346 618	Switch VS	17	42	2 610 902 145	Label "Fwd/Rev"	9
5	2 610 313 328	Cord 120V 18/2	11	44	2 610 026 126	Spring Washer	65
8	2 610 905 855	Nameplate "6226"	9	51	2 610 027 396	Washer {3}	65
9	2 610 905 856	Label "Skil"	9	52	2 610 017 642	Felt Seal	77
13	2 610 351 348	Bushing Assembly	60	53	2 610 068 005	Rev. Screw (old)	85
16	2 610 320 548	Brush Holder {2}	25	55	2 610 326 578	Screw {7}	89
26	2 610 038 675	Cable 160mm	10	57	2 610 347 358	Washer	65
27	2 610 038 922	Cable 140mm	10	60	2 610 352 019	Thrust Bearing	37
31	2 610 908 303	3/8" Keyless Chuck	91	810	2 610 321 617	Brush Set	26
34	2 610 038 609	Cable 80mm	10	815	2 610 347 363	Bearing Plate Assembly	38
35	2 610 346 380	Washer	65	840	2 610 993 502	Spindle 3/8"-24 w/Gear	52
36	2 610 347 349	Thrust Plate	65				

+ = Not Illustrated * = As Required F/C = Failure Code AW = Refer to AW Labor Time Chart

S-B Power Tool Company Chicago IL 60646-5999