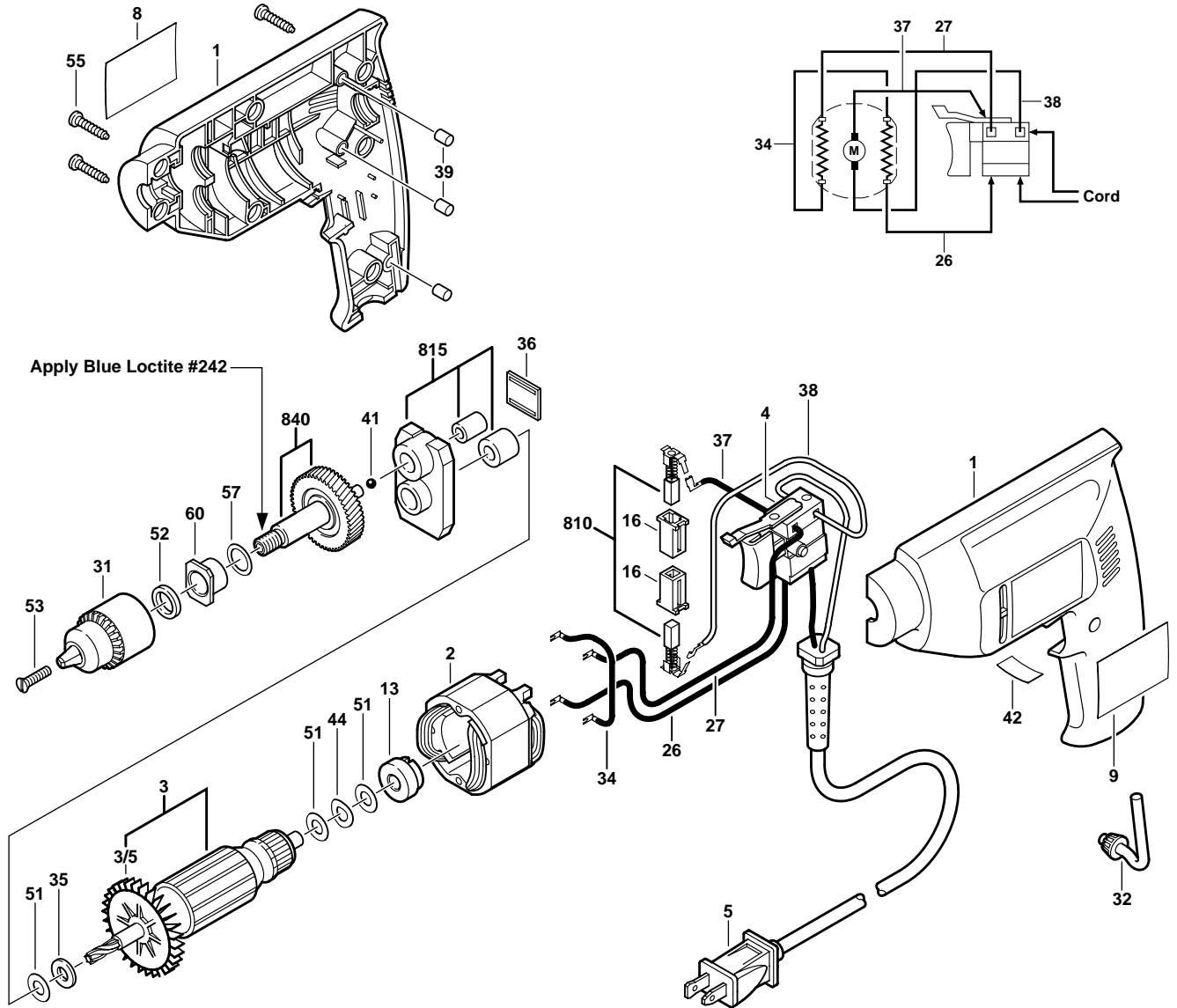




August 1997
CONSUMER

3/8" DRILL
Model F01262250A

6225
type 2



| Pos. | Part Number | Description {Qty.} | F/C | Pos. | Part Number | Description {Qty.} | F/C |
|------|---------------|---------------------|-----|------|---------------|------------------------|-----|
| 1 | 2 610 910 187 | Housing Assembly | 71 | 36 | 2 610 347 349 | Thrust Plate | 65 |
| 2 | 2 610 315 863 | Field 120V | 22 | 37 | 2 610 039 904 | Cable 130mm | 10 |
| 3 | 2 610 350 131 | Armature w/Fan 120V | AW | 38 | 2 610 320 494 | Cable 130mm | 10 |
| 3/5 | 2 610 346 332 | Fan | 23 | 39 | 2 610 028 780 | Rubber Plug {3} | 9 |
| 4 | 2 610 346 618 | Switch VS | 17 | 41 | 2 610 002 144 | Ball | 66 |
| 5 | 2 610 313 328 | Cord 120V 18/2 | 11 | 42 | 2 610 902 145 | Label "Fwd/Rev" | 9 |
| 8 | 2 610 990 570 | Nameplate "6225" | 9 | 44 | 2 610 026 126 | Spring Washer | 65 |
| 9 | 2 610 990 569 | Label "Skil" | 9 | 51 | 2 610 027 396 | Washer {3} | 65 |
| 13 | 2 610 351 348 | Bushing Assembly | 60 | 52 | 2 610 017 642 | Felt Seal | 77 |
| 16 | 2 610 320 548 | Brush Holder {2} | 25 | 53 | 2 610 068 005 | Rev. Screw (old) | 85 |
| 26 | 2 610 038 675 | Cable 160mm | 10 | 55 | 2 610 326 578 | Screw {7} | 89 |
| 27 | 2 610 038 922 | Cable 140mm | 10 | 57 | 2 610 347 358 | Washer | 65 |
| 31 | 2 610 304 973 | 3/8" Chuck | 91 | 60 | 2 610 352 019 | Thrust Bearing | 37 |
| 32 | 2 610 315 835 | Chuck Key | 9 | 810 | 2 610 321 617 | Brush Set | 26 |
| 34 | 2 610 038 609 | Cable 80mm | 10 | 815 | 2 610 347 363 | Bearing Plate Assembly | 38 |
| 35 | 2 610 346 380 | Washer | 65 | 840 | 2 610 993 502 | Spindle 3/8"-24 w/Gear | 52 |

+ = Not Illustrated * = As Required F/C = Failure Code AW = Refer to AW Labor Time Chart