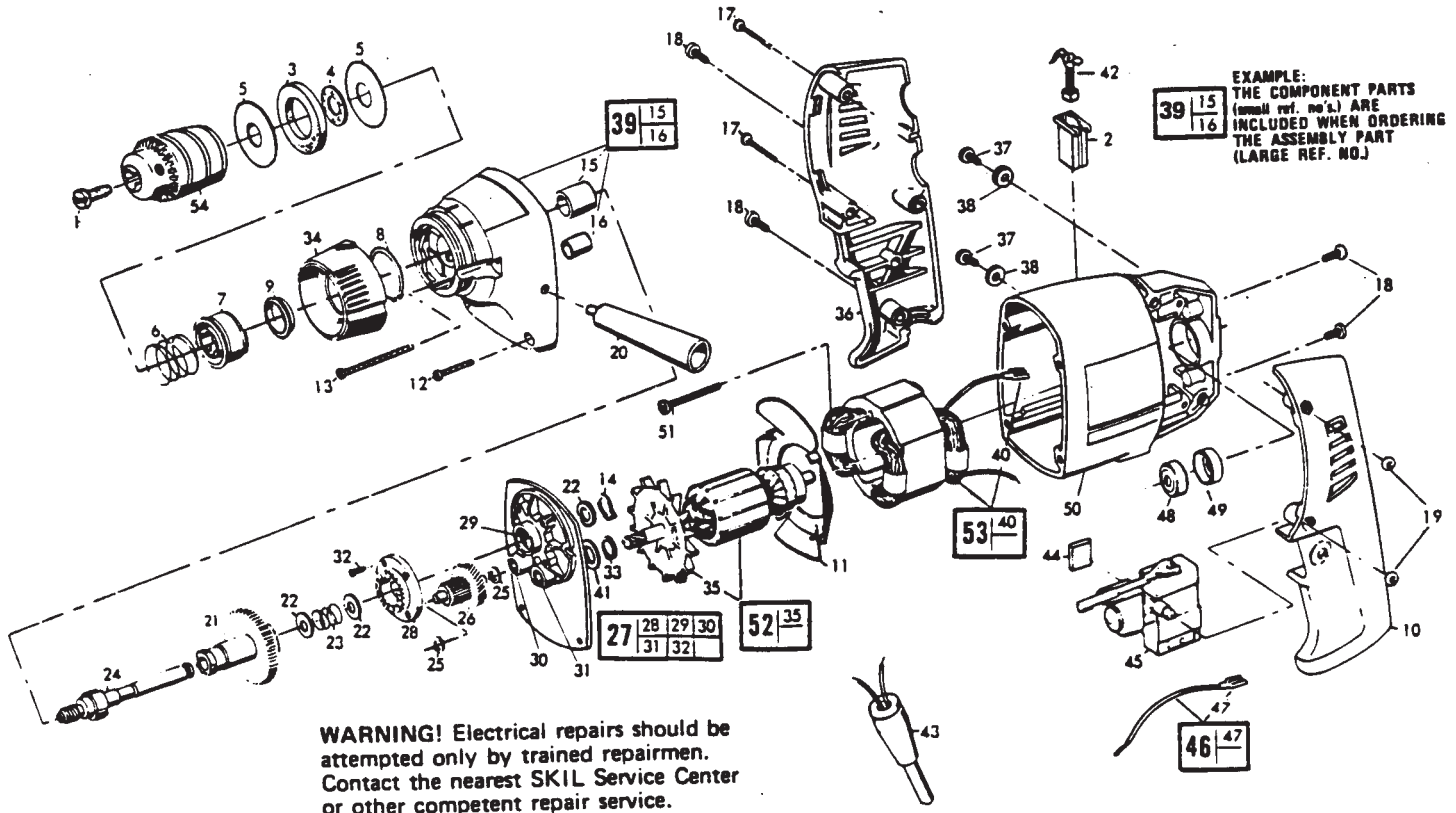


# SKIL MODEL 599 TYPE 4 XTRA TOOL DOUBLE INSULATED MODEL 600 TYPE 4 XTRA TOOL DOUBLE INSULATED




**WARNING!** Electrical repairs should be attempted only by trained repairmen. Contact the nearest SKIL Service Center or other competent repair service.

REF. NO.	PART NAME	PART NO.	REF. NO.	PART NAME	PART NO.
1	SCREW	68005	30	BEARING	25023
2	BRUSH HOLDER (2)	320548	31	BEARING	304897
3	DUST SEAL	309836	32	RIVET (4)	309859
4	THRUST BEARING	309849	33	FLAT WASHER	29674
5	WASHER (2)	309850	34	SELECTOR COLLAR	309844
6	SPRING	309847	35	FAN	303706
7	COUPLER	309838	36	RIGHT HANDLE COVER	320528
8	SNAP RING	10464	37	SCREW	315299
9	BRONZE BEARING	309839	38	FIBRE WASHER	303953
10	LEFT HANDLE COVER	320527	39	FRONT HOUSING	300721
11	BAFFLE	313842	40	TERMINAL	304129
12	SCREW (2)	323133	41	WASHER	26126
13	SCREW (2)	319844	42	BRUSH & SPRING (2)	325007
14 ★	RETAINER RING	12942	43	CORD & PLUG	302815
15	BEARING	309852	44	RUBBER SPACER	70829
16	BEARING	25023	45	SWITCH	325013
17	SCREW	319847	46	LEAD WIRE ASSEMBLY	320526
18	SCREW	320524	47	TERMINAL	304129
19	HEX NUT	304995	48	BALL BEARING	67674
20	SIDE HANDLE	45206	49	SLEEVE	320523
21	SHAFT	305899	50	MOTOR HOUSING	320525
22	WASHER	300091	51	SCREW	317299
23	SPRING	309848	52	ARMATURE (120V)	315795
24	SPINDLE	309841		ARMATURE (100V)	315796
25	FLAT WASHER	19856	53	FIELD (120V)	321247
26	INTER. GEAR & SPINDLE	317706		FIELD (100V)	321248
27	BEARING PLATE ASSEMBLY	312849			
28	HAMMER CAM	314328			
29	BEARING	309851			

### SPECIAL NOTES

★ Assemble with burr side (sharpest edge) toward armature.

REF. NO.	PART NAME	MODEL 599	MODEL 600
54	CHUCK & KEY SET	67974	67975
55	CHUCK KEY (Not Shown)	71860	71861

	April 1997 <b>TECHNICAL          BULLETIN</b>	<b>Section 3 - Drills / Drivers</b>	model(s) affected
		"replacement fields"	<b>Various</b>

To: All Authorized and Factory Service Centers,  
 Field Sales and Internal Support Personnel

Re: Replacement Fields

Please insert this bulletin into the "Technical Bulletins" section of your Skil Parts Manual, only after making any additions or notes to your Illustrated Parts List(s).

Please be advised that Field Assemblies (field with lead wires) are no longer available for the below listed models. The appropriate Lead Wires are required in addition to the new (wireless) Field.

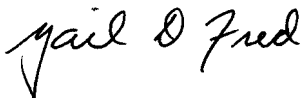
Models **599** and **600** :

<u>Description</u>	<u>Old Part Number</u>	<u>New Part Number</u>
Field w/Wires	321247	N/A
Field	N/A	315867
Lead Wire	N/A	38608
Lead Wire	N/A	38648
Lead Wire	N/A	38670
Lead Wire	N/A	906120

Models **6125, 6225, 6226, 6325, 6340, 6345, 6425, 6520** :

<u>Description</u>	<u>Old Part Number</u>	<u>New Part Number</u>
Field w/Wires	321618	N/A
Field	N/A	315867
Lead Wire	N/A	38609
Lead Wire	N/A	38677
Lead Wire	N/A	38923

All questions should be directed to your Authorized Service Manager.



Gail D. Fred  
 Product Service Department