

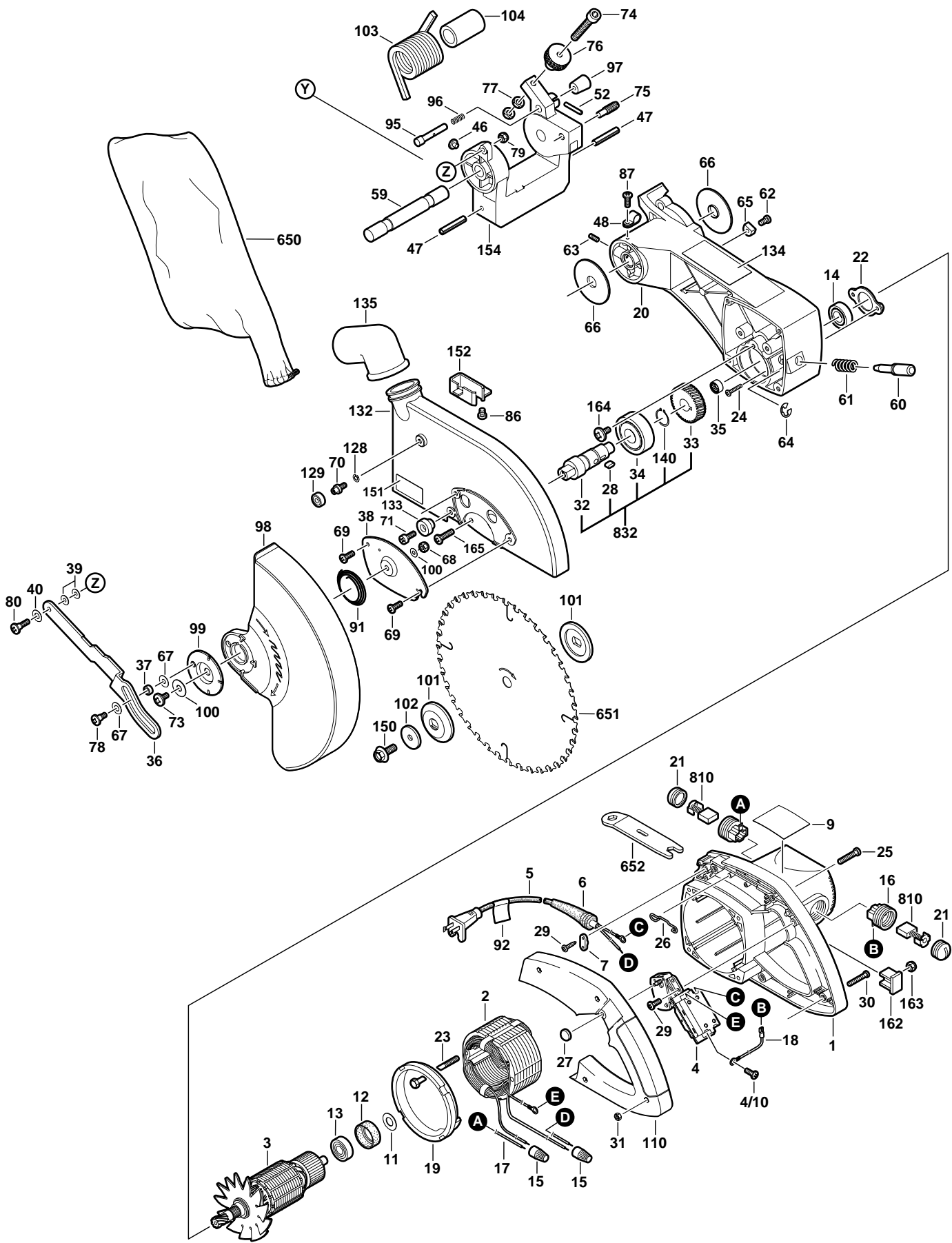
*open for tool illustration*

Pos.	Part Number	Description {Qty}	F/C	Pos.	Part Number	Description {Qty}	F/C
1	2 610 911 880	Motor Housing	71	45	2 610 911 589	Felt Seal {4}	77
2	2 610 911 856	Field 120V	22	46	2 610 911 584	Rubber Bumber {2}	9
3	2 610 911 857	Armature w/Fan 120V	AW	47	2 610 911 593	Roll Pin {4}	66
4	2 610 911 881	Switch On/Off	15	48	2 610 911 872	Cord Clamp {2}	89
4/10	2 610 993 109	Screw {4}	89	49	2 610 911 586	End Cap	9
5	2 610 911 879	Cord 16/2 120V	11	50	2 610 911 551	Base	88
6	2 610 911 932	Strain Relief	11	51	2 610 911 869	Detent Pin	81
7	2 610 911 878	Cord Clamp	89	52	2 610 911 577	Roll Pin {2}	66
9	2 610 991 995	Nameplate "3915"	9	53	2 610 911 561	Spring	27
11	2 610 911 924	Spring Washer	65	54	2 610 911 559	Lock Lever	64
12	2 610 911 925	Rubber Bearing Sleeve	82	55	2 610 351 415	Washer	65
13	2 610 911 928	Ball Bearing	60	56	2 610 911 581	Linear Bearing {2}	56
14	2 610 911 927	Ball Bearing	61	57	2 610 911 587	Retaining Plate {2}	65
15	2 610 911 933	Wire Nut {2}	10	58	2 610 911 590	Guide Tube	43
16	2 610 911 858	Brush Holder {2}	25	59	2 610 911 875	Shaft	54
17	2 610 911 930	Cable 280mm	10	60	2 610 911 594	Spindle Lock Pin	81
18	2 610 911 942	Cable 360mm	10	61	2 610 911 564	Spring	80
19	2 610 911 931	Baffle	24	62	2 610 911 899	Screw {11}	89
20	2 610 911 572	Gear Housing	72	63	2 610 911 908	Set Screw	89
21	2 610 911 859	Brush Cap {2}	25	64	2 610 911 902	Circlip	89
22	2 610 911 566	Retaining Plate	65	65	2 610 911 563	Pad	88
23	2 610 911 929	Hex Bolt & Washer {2}	89	66	2 610 911 937	Bevel Washer {2}	65
24	2 610 911 926	Screw & Washer {2}	89	67	2 610 911 599	Washer {2}	65
25	2 610 911 865	Screw & Washer {4}	89	68	2 610 911 570	Nut	89
26	2 610 911 567	Wrench Spring	9	69	2 610 004 925	Screw {2}	89
27	2 610 993 101	Button	9	70	2 610 911 883	Shoulder Screw	89
28	2 610 993 102	Woodruff Key	89	71	2 610 911 911	Shoulder Screw	89
29	2 610 911 903	Screw {3}	89	72	2 610 911 886	Nut {2}	89
30	2 610 911 904	Screw & Washer {4}	89	73	2 610 911 905	Screw	89
31	2 610 358 521	Nut {4}	89	74	2 610 911 580	Screw	89
32	2 610 993 103	Spindle	52	75	2 610 911 873	Screw	89
33	2 610 911 943	Spindle Gear	32	76	2 610 911 579	Knurled Knob	89
34	2 610 993 105	Ball Bearing	51	77	2 610 328 600	Nut {2}	89
35	2 610 993 106	Needle Bearing	56	78	2 610 911 598	Screw	89
36	2 610 911 557	Guard Linkage	62	79	2 610 911 896	Nut	89
37	2 610 911 850	Spacer	82	80	2 610 911 885	Shoulder Screw	89
38	2 610 993 107	Cover	70	81	2 610 911 914	Set Screw {4}	89
39	2 610 911 895	Washer {2}	65	82	2 610 328 618	Nut {4}	89
40	2 610 027 396	Washer	65	83	2 610 911 887	Washer {3}	65
41	2 610 911 588	Sliding Block {4}	80	84	2 610 911 868	Spring Washer {2}	65
42	2 610 911 583	Knob	63	85	2 610 911 670	Label	9
43	2 610 911 582	Spring	27	86	2 610 911 897	Screw & Washer {5}	89
44	2 610 911 592	Bearing Housing	73	87	2 610 911 907	Screw & Washer {3}	89

Pos.	Part Number	Description {Qty}	F/C	Pos.	Part Number	Description {Qty}	F/C
88	2 610 911 562	Screw	89	124	2 610 911 920	Rubber Bushing	9
89	2 610 911 560	Lock Handle Bolt	89	125	2 610 911 935	Allen Wrench 1/4"	9
90	2 610 911 891	Lock Washer	89	126	2 610 911 919	Retaining Plate	65
91	2 610 911 853	Coil Spring	27	127	2 610 911 667	Label "Warning"	9
92	2 610 911 671	Label "cord"	9	128	2 610 911 906	Lock Washer	89
93	2 610 911 861	Bolt	89	129	2 610 911 938	Ball Bearing	56
94	2 610 911 884	Hex Screw	89	130	2 610 358 846	Rubber Foot {4}	9
95	2 610 911 575	Detent Pin	81	131	2 610 911 666	Label "Warning"	9
96	2 610 911 576	Spring {2}	80	132	2 610 911 555	Upper Guard	92
97	2 610 911 578	Knob {2}	63	133	2 610 911 921	Rubber Bumber	9
98	2 610 911 556	Lower Guard	92	134	2 610 911 669	Label "Warning"	9
99	2 610 911 852	Retaining Plate	65	135	2 610 911 934	Dust Elbow	9
100	2 610 029 234	Washer {2}	65	137	2 610 911 893	Screw {3}	89
101	2 610 911 909	Blade Washer {2}	65	138	2 610 356 733	Screw {2}	89
102	2 610 911 870	Washer	65	139	2 610 911 900	Screw {2}	89
103	2 610 911 860	Coil Spring	27	140	2 610 993 108	Retaining Ring	89
104	2 610 911 874	Sleeve	82	145	2 610 911 901	Nut	89
105	2 610 911 862	Table Insert {2}	87	146	2 610 911 918	Hex Bolt	89
106	2 610 911 867	Block	9	150	2 610 911 871	Blade Bolt	85
107	2 610 911 877	Bevel Pointer	9	151	2 610 911 668	Label "Warning"	9
108	2 610 911 597	Roll Pin	66	152	2 610 911 916	Chip Defector	92
109	2 610 911 910	Shaft	54	154	2 610 911 922	Pivot Bracket	62
110	2 610 911 568	Handle Cover	74	155	2 610 911 591	Guide Tube	43
111	2 610 911 552	Table	9	162	2 610 911 569	Nut Housing {2}	9
112	2 610 911 866	Knob	63	163	2 610 327 868	Nut {2}	89
113	2 610 911 876	Miter Pointer	9	164	2 610 911 923	Screw	89
114	2 610 911 553	Fence	9	165	2 610 993 104	Screw & Washer {4}	89
115	2 610 911 913	Tension Plate	9	166	2 610 993 221	Washer {5}	89
116	2 610 911 912	Bracket	62	650	2 610 911 939	Dust Bag	9
117	2 610 911 864	Shaft	54	651	2 610 911 558	Blade 10"	94
118	2 610 911 917	Spring	27	652	2 610 911 565	Wrench	9
119	2 610 320 126	Washer	65	653	2 610 910 841	Clamp Assembly	80
120	2 610 911 936	Lever Assembly	64	810	2 610 993 222	Brush Set 120V	26
121	2 610 911 863	Glide Plate {2}	65	832	2 610 911 571	Spindle Assembly	52
122	2 610 911 658	Label "No Hands" {2}	9			w/pos. 28,32,33,34,140	
123	2 610 911 554	Extension Bracket	62				

**Service Notes:**



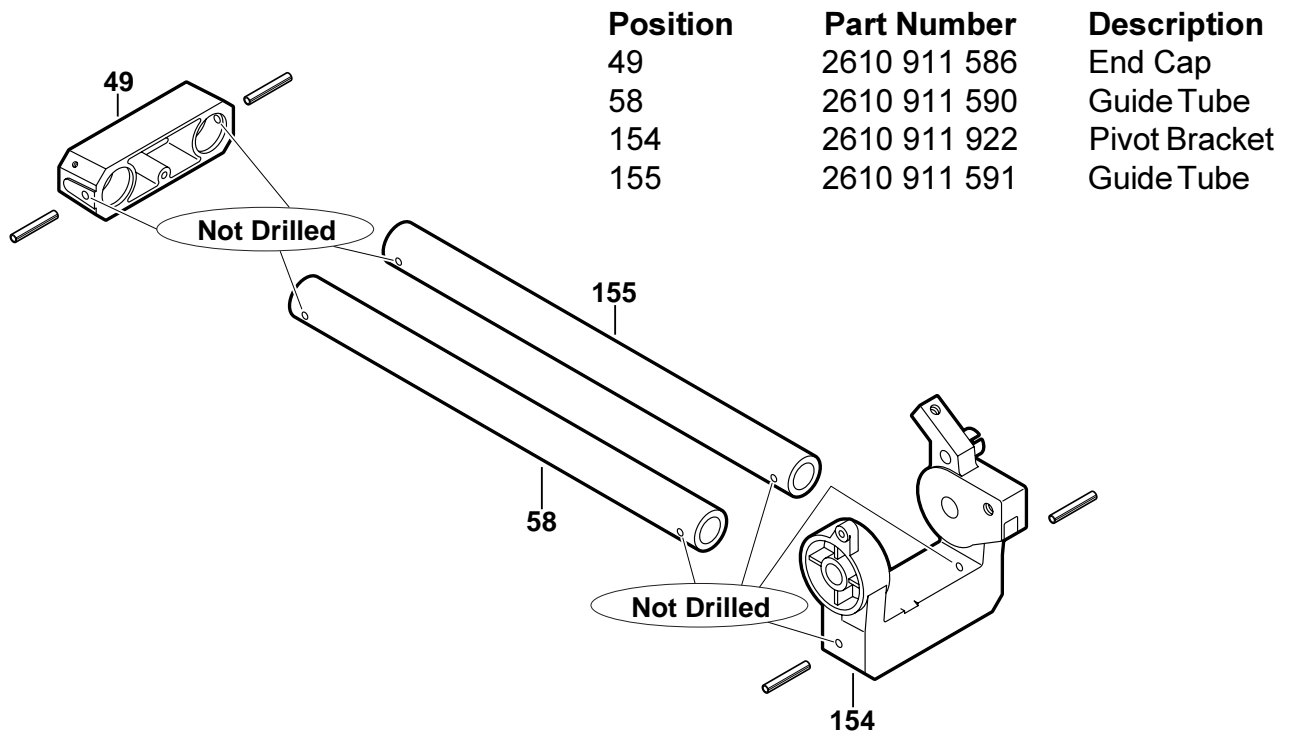


To: All Authorized and Factory Service Centers,  
Field Sales and Internal Support Personnel

Re: Unfinished service parts for models 3915 (060 1475 039)  
B3915 (060 1475 035)

Please insert this bulletin into the "Technical Bulletins" section of your Bosch Parts Manual, only after making any additions or notes to your Illustrated Parts List(s).

Please be advised that the service parts shown below are not pre-drilled. During manufacturing of a new tool, these parts are drilled and pinned on the assembly line after they are completely assembled. This means no two tools are fitted exactly the same way and makes pre-drilling the service parts impossible. Therefore, these parts must be drilled at the service facility using a 15/64" Cobalt drill bit after the parts are assembled.



All questions should be directed to your Authorized Service Manager.

Product Service Department

# BOSCH

August 1997  
TECHNICAL  
BULLETIN

## Section 7 - Saws

"noisy output spindle/gear assembly"

model(s) affected

**3915**  
**B3915**

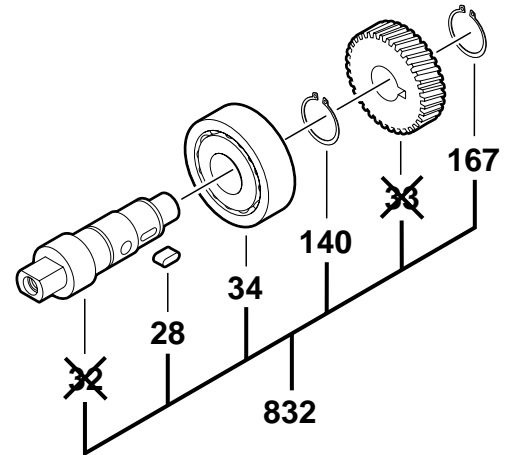
To: All Authorized and Factory Service Centers,  
Field Sales and Internal Support Personnel

Re: Noisy output spindle/gear assembly on models 3915 (060 1475 039)  
B3915 (060 1475 035)

Please insert this bulletin into the red "Technical Bulletins" section of your Bosch Parts Manual, only after making any additions or notes to your Illustrated Parts List(s).

Please be advised that a change has been made to the spindle and the spindle gear in order to correct saws with noisy gears or excessive vibration during start up, wind down, or heavy load situations. The spindle and the gear are available only as an assembly due to interchangeability issues. Corrections to your Illustrated Parts Lists are as follows:

<u>Pos.</u>	<u>Part Number</u>	<u>Description</u>	<u>F/C</u>
28	2 610 993 102	Key	89
32	See Pos. 832	Spindle	52
33	See Pos. 832	Spindle Gear	32
34	2 610 993 105	Ball Bearing	51
140	2 610 993 108	Retaining Ring	89
167	2 610 992 356	Retaining Ring	89
832	2 610 992 363	Spindle Assembly	52



All questions should be directed to your Authorized Service Manager.

Gail D. Fred  
Product Service Department