



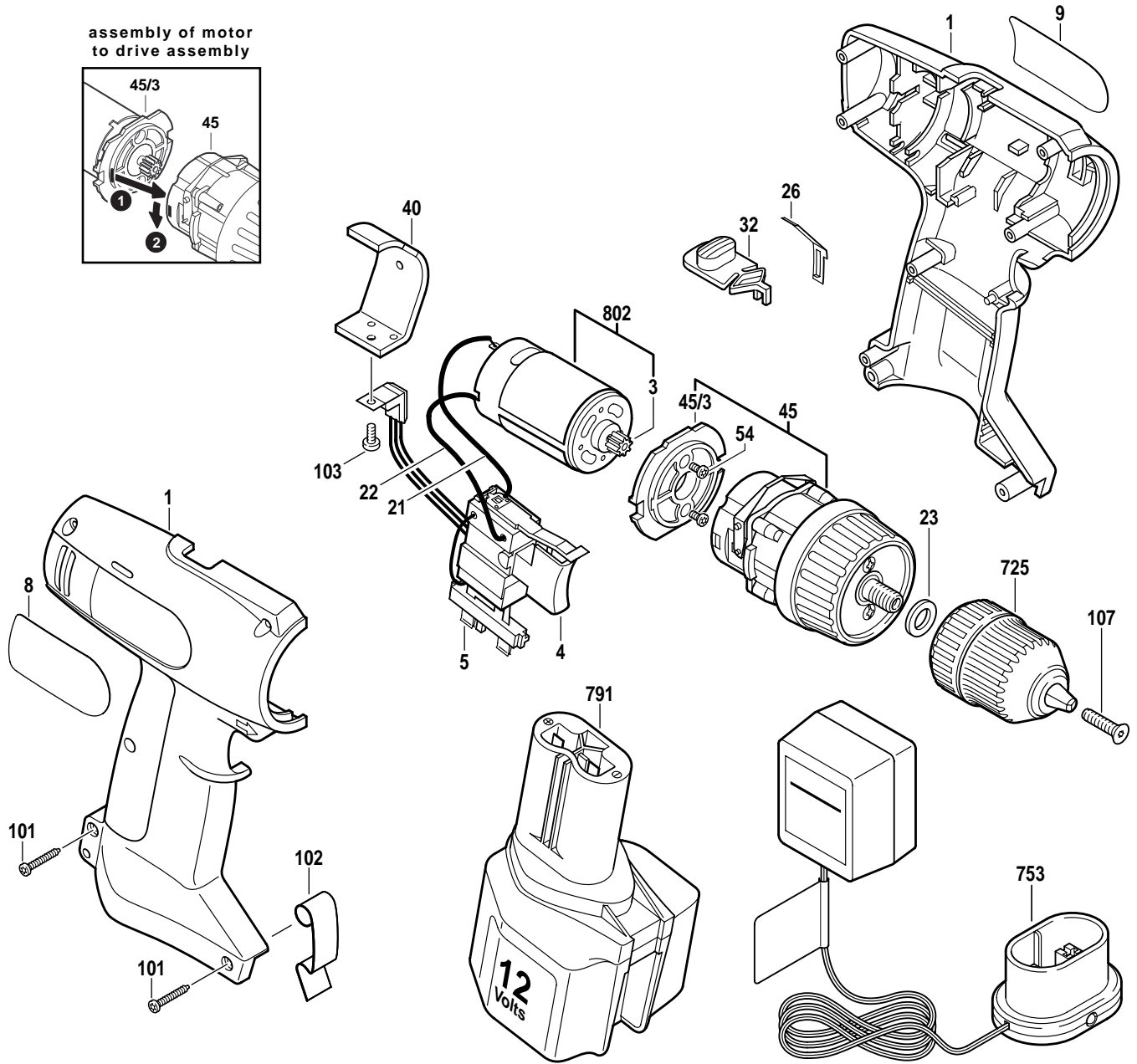
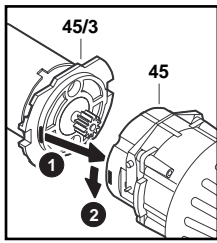
January 1998
CONSUMER

12V DRILL / DRIVER

Model F012248204

2482

assembly of motor
to drive assembly



Pos.	Part Number	Description {Qty.}	F/C	Pos.	Part Number	Description {Qty.}	F/C
1	2 610 993 842	Housing Assembly	71	45	2 610 993 845	Drive Assembly	40
3	2 606 316 161	Pinion Gear	33			w/pos. 45/3	
4	2 610 967 136	Switch VSR	17	45/3	2 610 967 693	Mounting Flange	38
5	2 610 908 335	Battery Contact	10	54	2 603 414 048	Screw {2}	89
8	2 610 994 164	Nameplate "2482"		9	101	Screw {7}	89
9	2 610 994 165	Label "Skil 12V"		102	2 610 351 018	Battery Retaining Clip	9
21	2 610 967 129	Cable	10	103	2 610 315 146	Screw	89
22	2 610 967 130	Cable	10	107	3 603 430 505	Rev. Screw 3mm hex drive	85
23	2 610 993 828	Spacer	65	725	2 610 908 303	3/8" Keyless Chuck	91
26	2 610 993 329	Spring	27	753	2 610 909 723	Charger 12V	18
32	2 610 993 848	Gear Select Lever	63	791	2 610 908 315	Battery 12V	18
40	2 610 967 134	Heat Sink	9	802	2 610 993 829	Motor w/Gear 12V	19
						w/pos. 3	

+ = Not Illustrated * = As Required F/C = Failure Code AW = Refer to AW Labor Time Chart