

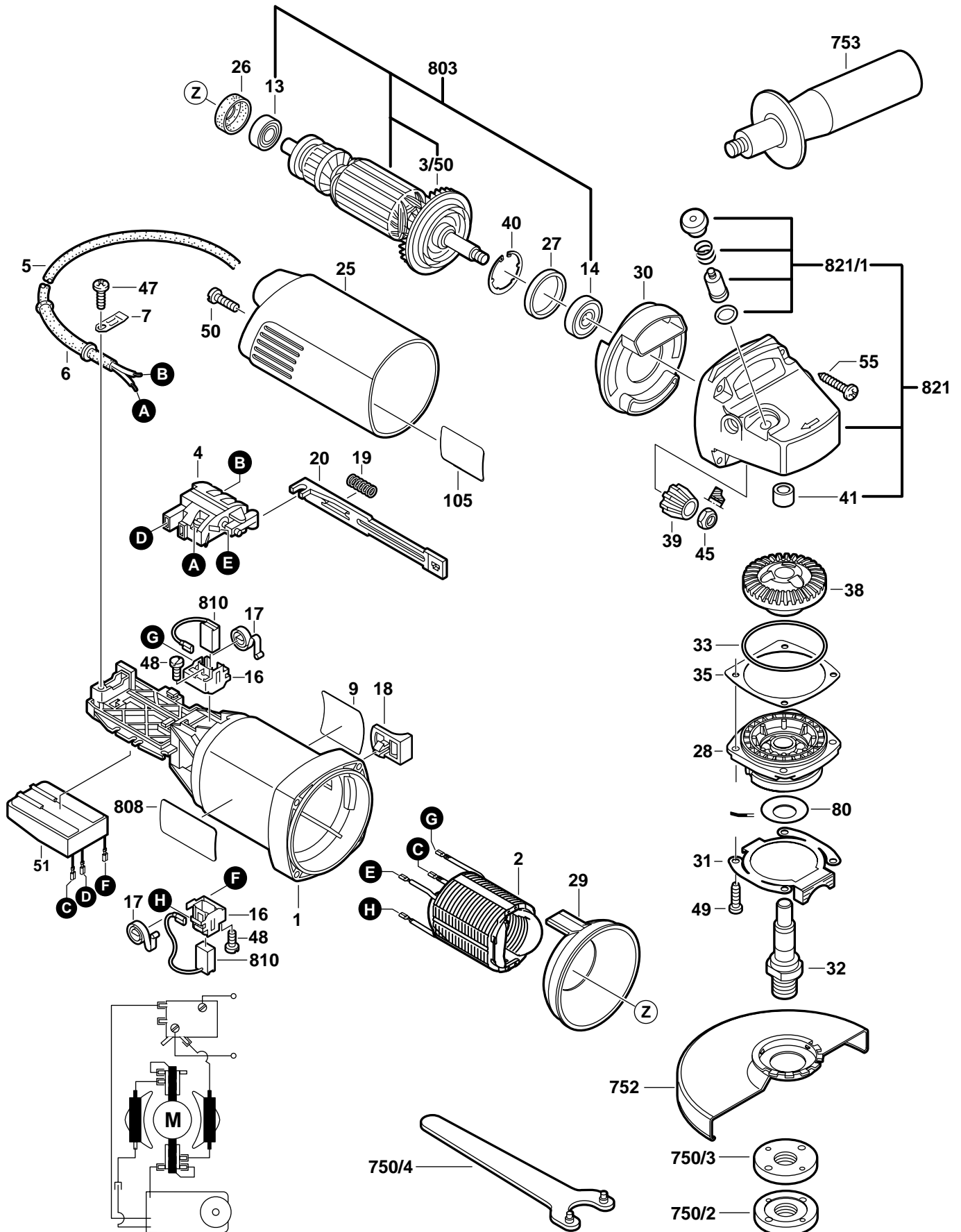
BOSCH

January 1998
INDUSTRIAL

5" MINI GRINDER

Model 0601703739

1703AEVS



1703AEVS 5" MINI GRINDER

Pos.	Part Number	Description {Qty}	F/C	Pos.	Part Number	Description {Qty}	F/C
1	1 605 108 175	Motor Housing	71	* 35.2	1 600 136 015	Shim 0.3mm	65
2	1 604 220 311	Field 120V	22	38	1 606 333 616	Crown Gear	32
3/50	1 606 610 129	Fan	23	39	1 606 333 617	Bevel Gear	33
4	1 607 200 137	Switch On/Off	15	40	1 600 119 011	Retaining Ring	89
+ 4/1	2 910 091 047	Screw {2}	89	41	2 610 910 319	Bushing	51
5	3 604 460 555	Cord 120V 18/2	11	45	1 603 300 016	Nut	89
+ 5/1	1 900 452 012	Terminal Sleeve {2}	10	47	1 603 435 042	Screw	89
6	2 600 703 013	Strain Relief	11	48	2 910 611 405	Screw {2}	89
7	1 601 302 017	Cord Clamp	89	49	3 603 429 515	Screw {4}	89
9	2 610 968 157	Label "1703AEVS"	9	50	2 912 401 420	Screw	89
13	2 600 905 032	Ball Bearing	60	51	1 607 233 115	Speed Control	17
14	3 600 900 512	Ball Bearing	61	55	1 603 435 043	Screw {4}	89
16	1 601 323 023	Brush Holder {2}	25	80	3 600 150 021	Washer	65
17	1 604 652 014	Brush Spring {2}	27	105	1 601 008 005	Insulating Plate {2}	9
18	1 602 026 057	Switch Button	9	+ 180	2 610 968 156	Label "Warning"	9
19	1 604 611 026	Spring	27	750/2	3 603 340 503	Outer Flange 5/8"-11	91
20	1 602 319 010	Switch Slide	9	750/3	3 603 340 501	Inner Flange 5/8"-11	91
25	1 600 508 016	Housing Cover	74	750/4	1 607 950 043	Spanner Wrench	9
26	1 600 502 023	Rubber Bearing Sleeve	82	752	2 610 906 295	Guard 5"	92
27	1 600 206 025	Rubber Bearing Sleeve	82	753	1 602 025 027	Auxiliary Handle	9
28	1 605 805 077	Gear Cover w/Bearing	70	803	1 604 010 642	Armature w/Fan 120V w/pos. 3/50, 13, 14	AW
29	1 600 591 025	Air Deflector	24	808	3 601 119 595	Nameplate	9
30	1 600 591 014	Baffle	24	810	1 607 014 138	Brush Set	26
31	1 601 290 007	Clamping Collar	65	821	2 610 990 017	Gear Housing Assembly w/pos. 41, 821/1	72
32	3 603 523 503	Spindle 5/8"-11	52	821/1	1 607 000 253	Spindle Lock Assembly	81
33	1 600 210 035	O-Ring	78				
* 35	1 600 136 013	Shim 0.1mm	65				
* 35.1	1 600 136 014	Shim 0.2mm	65				

Service Notes:

- Early production grinders may have contained a Capacitor connected to the Switch. If present, please remove and discard, as it is not required for proper operation and not available as a service part.

