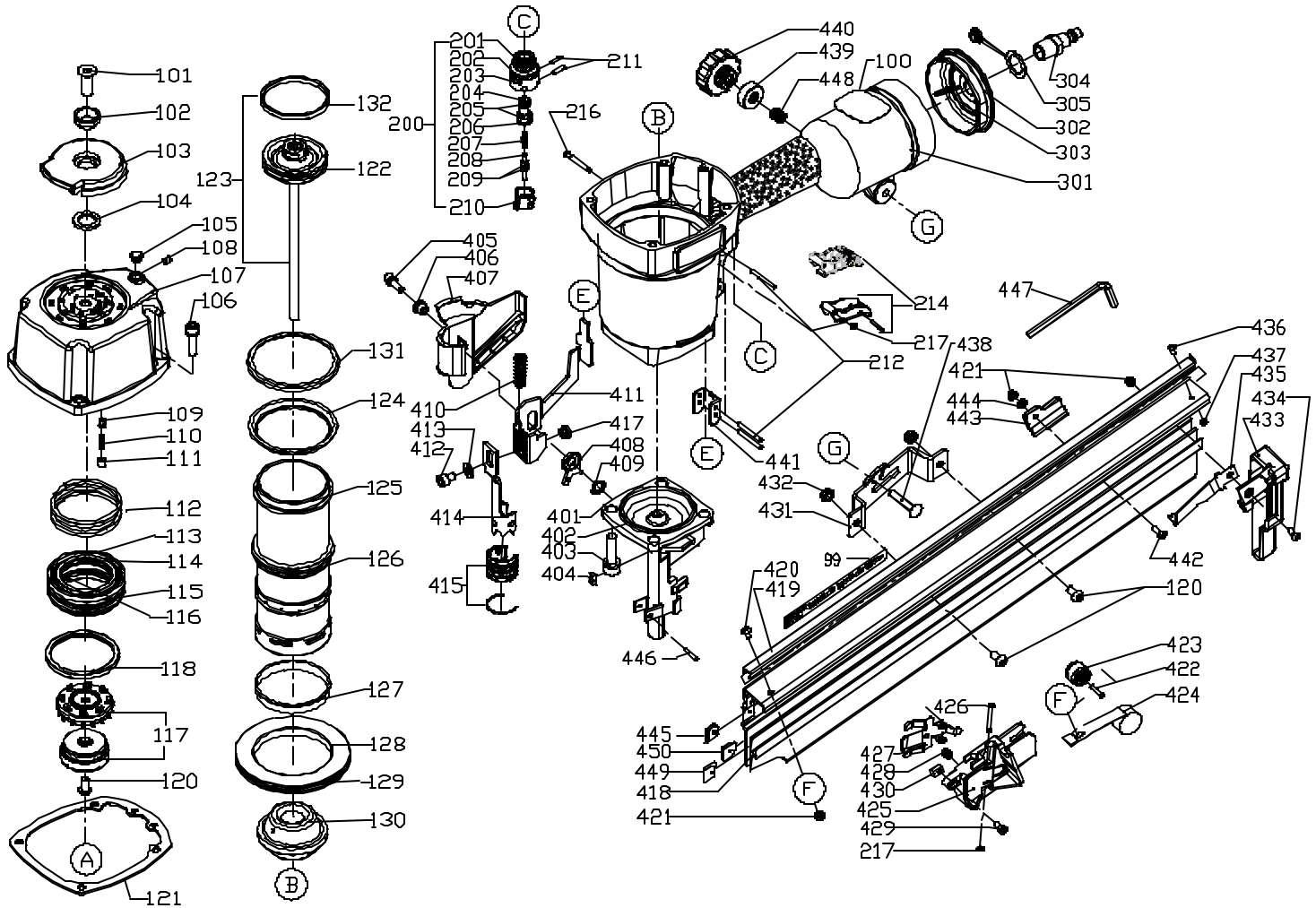


# PORTER-CABLE

## ROUND HEAD FRAMING NAILER

# FR350MAG



# FR350MAG

Ref.			Ref.		
<u>No.</u>	<u>Part No.</u>	<u>Description</u>	<u>No.</u>	<u>Part No.</u>	<u>Description</u>
99	903333	Label, After S/N 20710	405	897416	Bolt
	893926	Label, Before S/N 20711	406	897417	Bushing
100	n 904673	Warning Label	407	897418	Cover
101	886431	Screw	408	897419	Magazine Lockout
102	897315	Bushing	409	897420	Spring
103	897316	Deflector	410	897421	Spring
104	897317	Rubber Pad	411	897422	Safety B
105	886148	Grommet	412	897381	Bolt
106	897318	Bolt W/Washer	413	886077	Washer
107	897319	Cap Assy., Incl.: Ref. 105, 106, 108, 109, 110 & 111	414	897423	Safety A
			415	897385	Nose Cushion Assy
108	883912	Screw	417	897382	Clinch Nut
109	897320	Ball	418	897531	Magazine Assy., Incl.: Ref. 419, 420, 421, 433, 434, 435, 436, 437, 445, 449, & 450
110	883939	Spring			
111	897322	Screw	419	897426	Channel
112	897323	Spring	420	883999	Screw
113	897324	Piston	421	883882	Lock Nut
114	901368	Quad Ring	422	897427	Pin
115	897325	O-Ring	423	886440	Drum
116	901367	D-Ring	424	897428	Spring
117	901372	Vavle	425	897429	Cover
118	897328	Collar	426	890722	Trigger Pivot Pin
120	886260	Bolt	427	897430	Pusher
121	897331	Gasket	428	897431	Spring
122	897332	O-Ring	429	883866	Screw
123	897409	Driver Assy, Incl.: Ref. 122, 132	430	897432	Nut
	60067	Driver Maint. Kit, Incl.: Ref. 121, 122, 123, 130 & 132	431	897433	Bracket
			432	886105	Locknut
124	897334**	Cylinder Press Ring	433	897434	Cover
125	897335	Cylinder W/Slot Hole	434	884001	Screw
126	897336	O-Ring	435	897435	Stop
127	897387	Ring	436	897436	Bolt
128	901436	Spacer	437	886104	Lock Nut
129	897389	O-Ring	438	n 908784	Bolt, T2
130	897337**	Bumper		897437	Bolt, T1
131	897338**	Press Ring Seat	439	897438	Washer
132	896762	Piston Ring	440	n 908785	Knob, T2
200	897458	Trigger Valve Assy., Incls.: 201, 202, 203, 204, 205, 206, 207, 208, 209, 210, 211, 212, 217		897439	Knob, T1
			441	897378	Safety Guide
201	897340	O-Ring	442	897440	Bolt
202	897341	O-Ring	443	897441	Wrench Holder
203	897342	Plunger Cap	444	886078	Washer
204	883937	Plunger Valve	445	897442	Clip
205	883936	O-Ring	446	888808	Rolled Pin
206	883938	O-Ring	447	884299	Hex Wrench
207	883939	Spring	448	897444	Spring
208	897346	Plunger	449	901556	Wear Clip
209	883848	O-Ring	450	901557	Wear Clip
210	897347	Valve			
211	897374	Rolled Pin			ACCESSORIES: (Optional)
212	897349	Rolled Pin			
214	n 906400	Selectable Trigger, T2	*	893579	Safety Glasses
	n 908019	Single Sequential Actuation Trigger - Optional, T2	*	884293	Oil
	895576	Contact Actuation Trigger, T1	*	891902	Hex Wrench - 2mm
	893903	Single Sequential Actuation Trigger - Optional, T1	*	891903	Hex Wrench - 2.5mm
216	897351	Pin	*	884297	Hex Wrench - 3mm
217	890725	Retainer	*	884298	Hex Wrench - 4mm
301	904941	Housing, After S/N 22600	*	884300	Hex Wrench - 6mm
	897411	Housing, Before S/N 22601	*	60066	Overhaul Mant. Kit, Incl.: Ref. 114, 115, 116, 117, 118, 120, 121, 126, 127, 129, & 130
302	897354	O-Ring			
303	897355	End Cap			
304	887077	Quick Disconnect	**		See Service Notes
305	887078	Dust Cap			
401	897413	Nose Piece, Incl.: Ref. 404			
402	897414	O-Ring			
403	894800	Bolt			
404	897415	Magnet			

## BUMPER INSTALLATION (REF.130)

The bumper (ref. 124) 897337 must be installed with the arrow in the **UP** position. See Fig. 1 below.

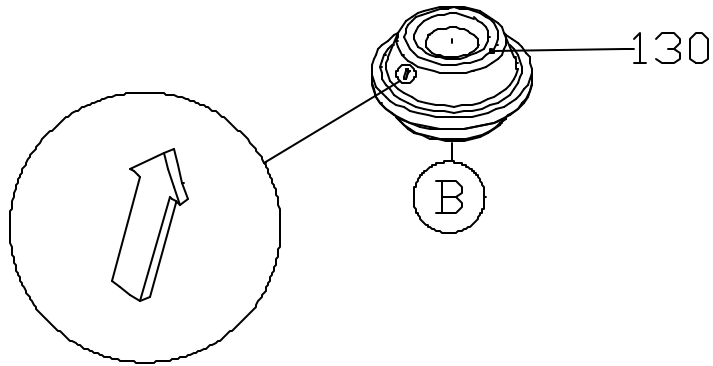


Fig1.

## CYLINDER PRESS RING (REF.124) & SEATED PRESS RING (REF. 131) INSTALLATION

First, the cylinder press ring (ref. 124) 897334 should be installed onto the cylinder (ref. 125) 897335 before placing into the housing. Secondly, the seat-press ring (ref. 131) 897338 should be installed over (ref. 124) 897334. Finally, the grooves should match to place the cylinder into the housing. See Fig.

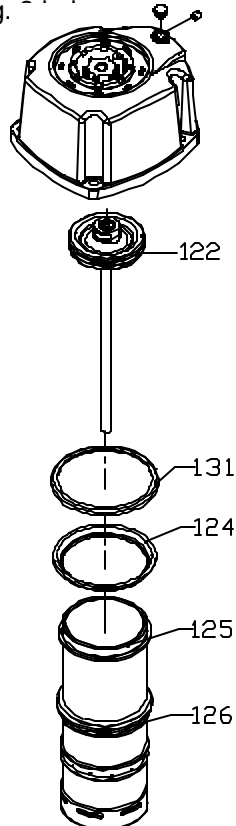


Fig2