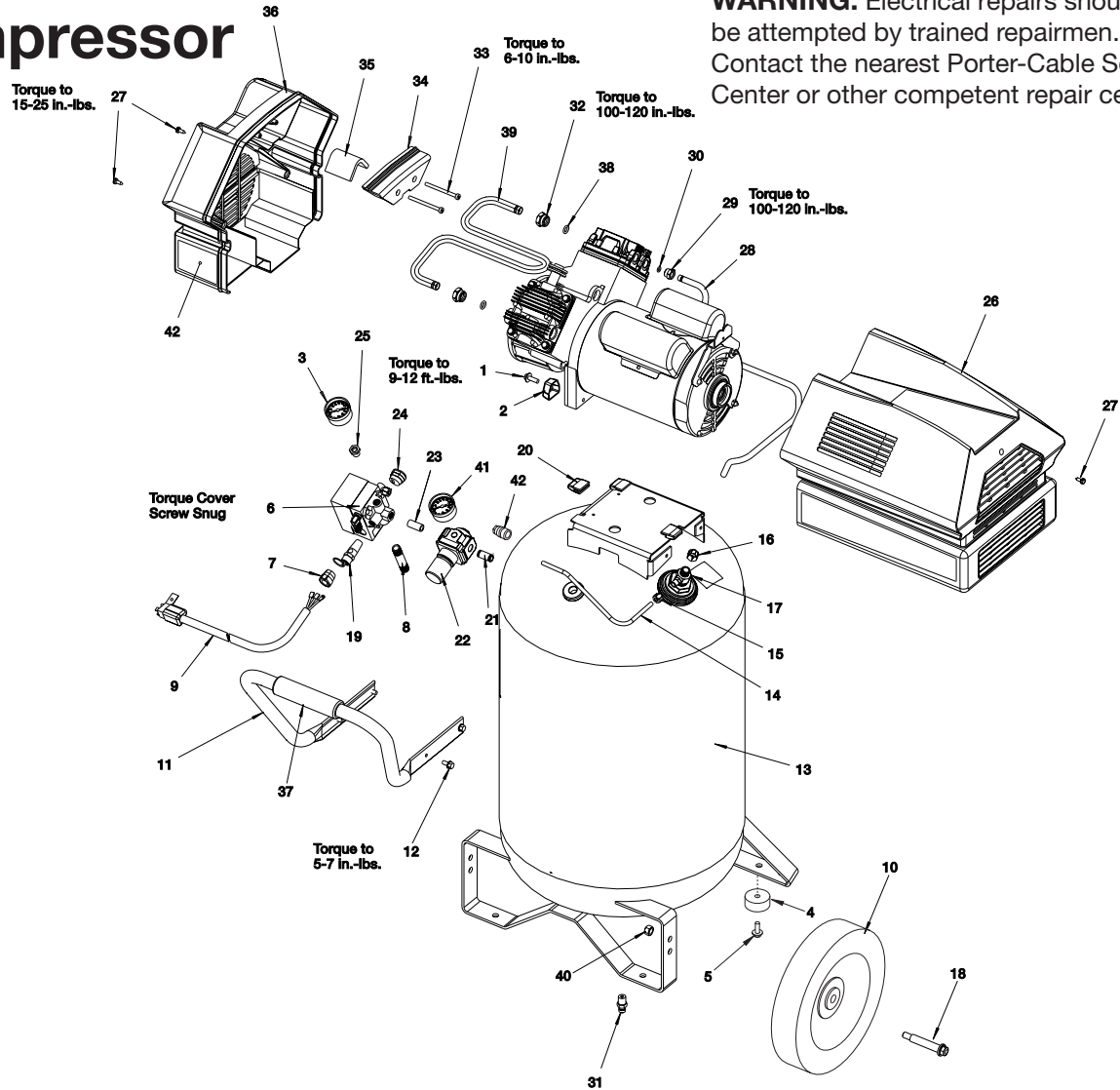


PORTER-CABLE®

Compressor

CPFC2TV3525VP

WARNING: Electrical repairs should only be attempted by trained repairmen. Contact the nearest Porter-Cable Service Center or other competent repair center.

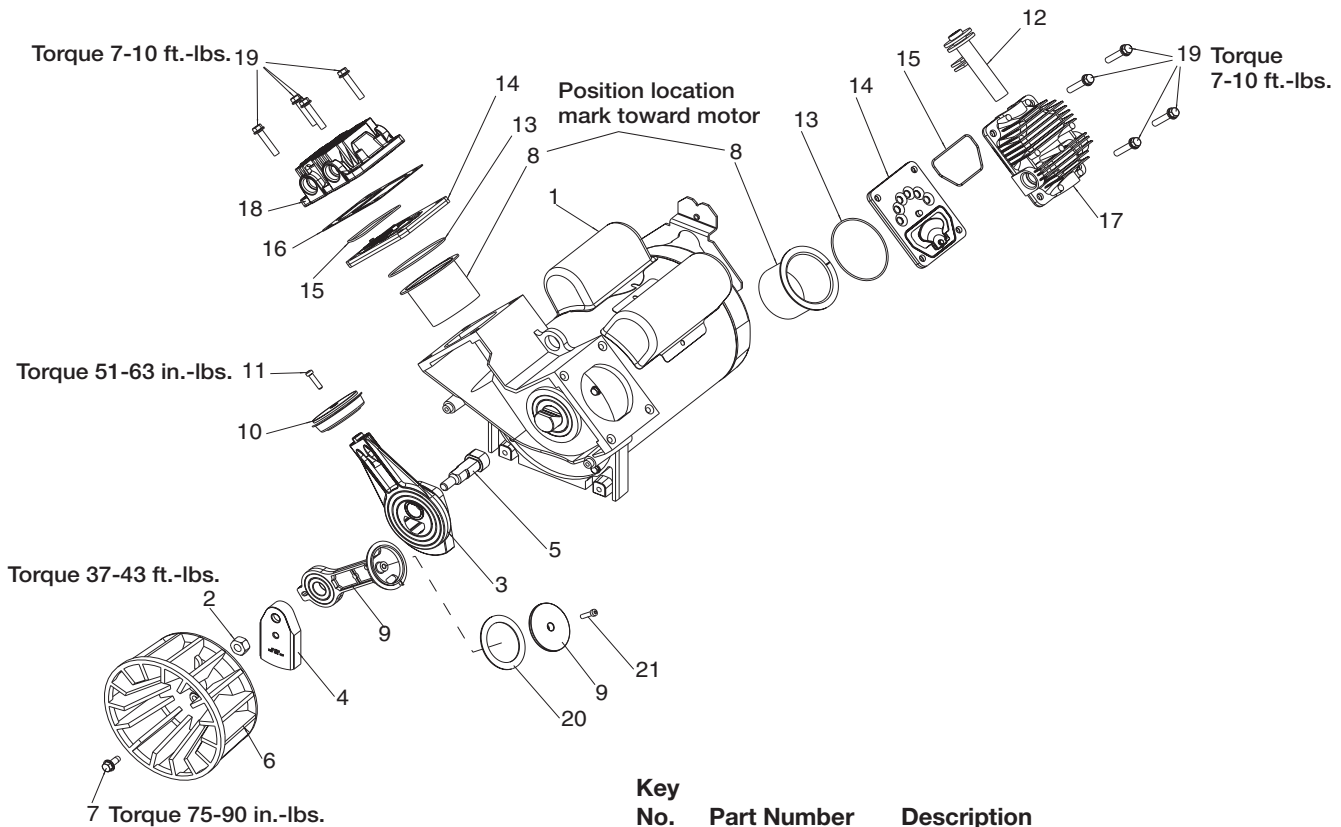


No.	Part Number	Description	No.	Part Number	Description
1	SSF-990	Screw 1/4-20UNC-2A THD (2 used)	27	ACG-408	Fastener Assembly (3 used)
2	ACG-18	Cup Saddle Mount (2 used)	28	AC-0803	Outlet Tube
3	D21041	Gauge, 1.5 OD	29	SSP-7821-1	Nut Tubing 3/8"OD
4	SST-107	Rubber Bumper	30	SSG-3105	O-Ring
5	SSF-630	Screw, 25 x 1.50 (2 used)	31	SS-2707	Drain Valve
6	Z-AC-0789	Pressure Switch	32	AC-0780	Nut Tubing 1/2"OD (2 used)
7	SSW-7482	Connector Conduit 3/8	33	SSF-554	Screw 10-14 x 2.5 (2 used)
8	SSP-480	Nipple 1/4-18 NPT x 2.50	34	D21028	Intake Muffler Cover
9	SUDL-413-2	Power Cord Assembly	35	ACG-12	Element Intake Filter
10	AC-0014	Wheel 9"	36	D21030	Shroud, Front
11	AC-0609	Handle	37	AC-0558	Grip
12	SSF-981	Screw Hex HD Self Tapping (4 used)	38	AC-0781	O-Ring .362ID x .103 width (2 used)
13	Z-D21024	Tank 20G Vertical	39	AC-0802	Interconnecting Tube
14	AC-0630	Pressure Relief Tube	40	SSF-8080-ZN	Hex Nut 3/8 - 16
15	SSP-7811	Nut Sleeve Assembly 1/4"	41	D21039	Gauge, 2.00 OD
16	SSP-7813	Nut Sleeve Assembly 3/8"	42	D20675	Quick Connect 1/4NPT (not assembled)
17	AC-0631	Check Valve 7/8 HEX x 1/4			
18	CAC-60	Shoulder Bolt 3/8 - 16			
19	TIA-4200	Safety Valve			
20	AC-0774	Isolator (3 used)			
21	H-2099	Adapter			
22	D20643	Regulator			
23	SS-2071	Nipple Close 1/4-18 NPTx1.5			
24	SSW-7367	Bushing Strain Relief			
25	SSP-6021	Bushing Reducer 1/8-1/4 NPT			
26	D21026	Shroud, Rear			

Not Illustrated

- LA-2832 Label, Drain Tank Warning
- LA-3164 Label, Pressure Switch Warning
- LA-2828 Label, Hot Surface
- D23590 Label, Warning

CPFC2TV3525VP



Key

No.	Part Number	Description
1	Z-MO-9089	Motor
2	AC-0797	Nut, Eccentric Pin
✓ 3	AC-0800	Eccentric Rod Bearing
4	AC-0793	Eccentric Outer
5	AC-0794	Eccentric Pin
6	ACG-22	Fan
7	39124607	Screw Self Tap 1/4 x 5/8
• x 8	AC-0788	Cylinder Sleeve
• 9	----	Connecting Rod Assembly
x 10	AC-0810	Piston Assembly
x ✓ 11	D20605	Screw 10-24 x .75 T25 Torx
12	ACG-11	Intake Muffler
• x ✓ 13	SSG-8156	O-Ring
14	Z-AC-0032	Valve Plate Assembly
• x ✓ 15	ACG-45	O-Ring
x ✓ 16	AC-0779	Head Gasket
17	AC-0805	Head - Low Pressure
18	AC-0784	Head - High Pressure
19	AC-0798	Screw 1/4-20 x 1.25 HHW THD

- Key No's 8, 9, 13, & 15 can be purchased as K-0651 Connecting Rod Kit.
- ✓ Key No's 3, 11, 13, 15 & 16 can be purchased as K-0649 Connecting Rod Kit- High Pressure.
- x Key No's 8, 10, 11, 13, 15, & 16 can be purchased as K-0648 Compression Ring HP Replacement Kit.