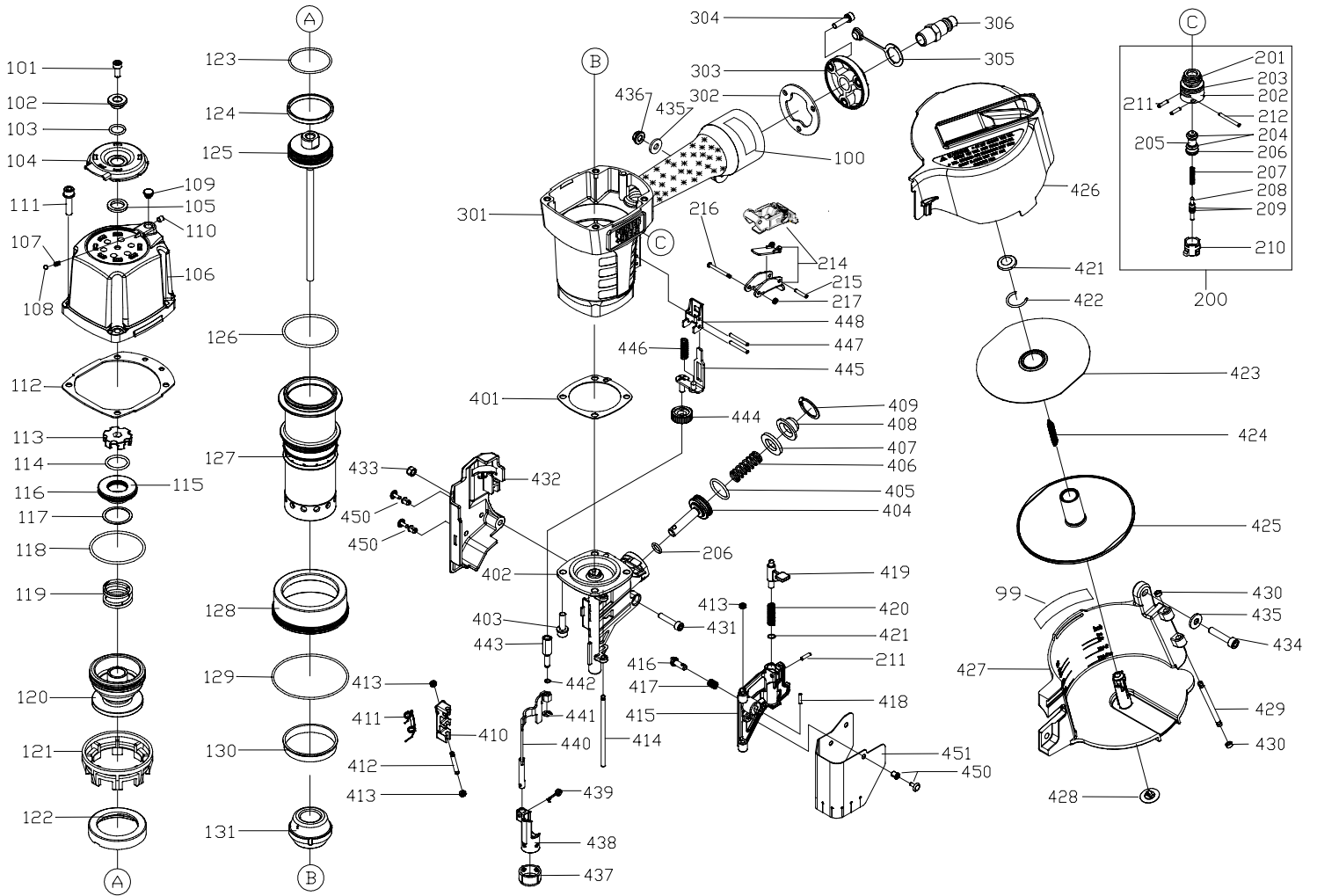


# PORTER-CABLE

## COIL NAILER

# COIL250



# COIL250

Ref.

<u>No.</u>	<u>Part No.</u>	<u>Description</u>
99	893901	Information Plate
100	n 904673	Warning Label
101	898303	Screw
102	886186	Washer
103	883849	O-Ring
104	886187	Deflector
105	886188	Rubber Pad
106	898305	Cylinder Cap, Incl.: Ref 107, 108, 110
107	886189	Spring
108	886101	Ball
109	886148	Grommet
110	883912	Screw
111	898306	Bolt
112	883913	Gasket
113	898307	Seal
114	898308	O-Ring
115	903815	Collar
116	883833	O-Ring
117	898311	Gasket
118	898312	O-Ring
119	898313	Spring
120	898314	Piston Valve
121	898315	Cylinder Press Ring
122	898316	Collar
123	898317	O-Ring
124	898318	Piston Ring
125	60070	"DRIVER" Maintenance Kit, Incl.: Ref. 112, 125, 131
	898319	Driver Unit W/Ring, Incl.: Ref. 123, 124
126	883917	O-Ring
127	898320	Cylinder
128	898321	Spacer
129	883928	O-Ring
130	898322	Cylinder Ring
131	886191	Bumper
200	897458	Trigger Valve Assy, Incl.: Ref. 201 THRU 212, 216, 217
201	897340	O-Ring
202	897342	Plunger Cap
203	897341	O-Ring
204	883936	O-Ring
205	n 883937	Plunger Valve
206	883938	O-Ring
207	897345	Spring
208	897346	Plunger
209	883848	O-Ring
210	897347	Valve
211	897374	Pin
212	898323	Pin
214	n 906400	Selectable Trigger, T2
	n 908019	Single Sequential Actuation Trigger - Optional, T2
	893930	Contact Actuation Trigger, T1
	893077	Single Sequential Actuation Trigger - Optional, T1
215	883945	Pin
216	890724	Trigger Pivot Pin
217	890725	Retainer
301	898329	Housing, Incl.: Ref. 100
302	883948	Gasket
303	887282	End Cap
304	894752	Bolt
305	887078	Air Plug Cap
306	887077	Air Plug
401	898331	Gasket
402	903816	Nose Piece
403	898333	Bolt
404	898334	Feed Piston

Ref.

<u>No.</u>	<u>Part No.</u>	<u>Description</u>
405	898335	O-Ring
406	898336	Spring
407	898337	Bumper
408	903819	Cap, Incl.: Ref. 409
409	903818**	C-Ring , After S/N 14100 Only
410	898339	Feeder Pawl
411	898340	Spring
412	898341	Pin
413	897359	Retaining Ring
414	898342	Shaft
415	898344	Door, Incl.: Ref. 416 Thru 421
416	898345	Nail Stop
417	898346	Spring
418	898347	Pin
419	897376	Door Latch
420	897375	Spring
421	n 906077	Spring Base
422	898348	Ring
423	898349	Nail Support Tray
424	898350	Spring
425	898351	Spacer
426	898352	Magazine Cover
427	898353	Magazine Case
428	898354	Spring Base
429	898355	Pin
430	898356	Retainer
431	898357	Bolt
432	898358	Safety Cover
433	883970	Nut
434	898360	Bolt
435	886077	Washer
436	897407	Nut
437	898361	Nose Cushion
438	898362	Safety A
439	888544	Spring
440	898364	Safety Unit
441	883877	E-Ring
442	898366	O-Ring
443	898367	Adjusting Rod
444	898368	Thumb Wheel
445	n 909494	Safety B, T2
	898369	Safety B, T1
446	898370	Spring
447	883884	Pin
448	n 909491	Safety Guide, T2
	887269	Safety Guide, T1
450	891779	Drive Pin
451	898371	Nose Shield
*	884293	Air Tool Oil (18cc)
*	884298	Hex Wrench (4mm)
*	884299	Hex Wrench (5mm)
*	893886	Carrying Case, Incl.: Latch
*	887712	Latch
*		<b><u>ACCESSORIES: (Optional)</u></b>
*	893579	Safety Glasses
*	60069	"OVERHAUL" Maintenance Kit, Incl.: Ref. 112, 114, 116, 117, 118, 121, 122, 126, 129, 130, 131
**		See Service Notes

# COIL250

# SERVICE NOTES

## C-RING (Ref. 409):

When replacing C-Ring, Ref. 409 in units prior to S/N 14101 it is necessary to use Cap Assy. 903819, Ref. 408 to insure interchangeability.