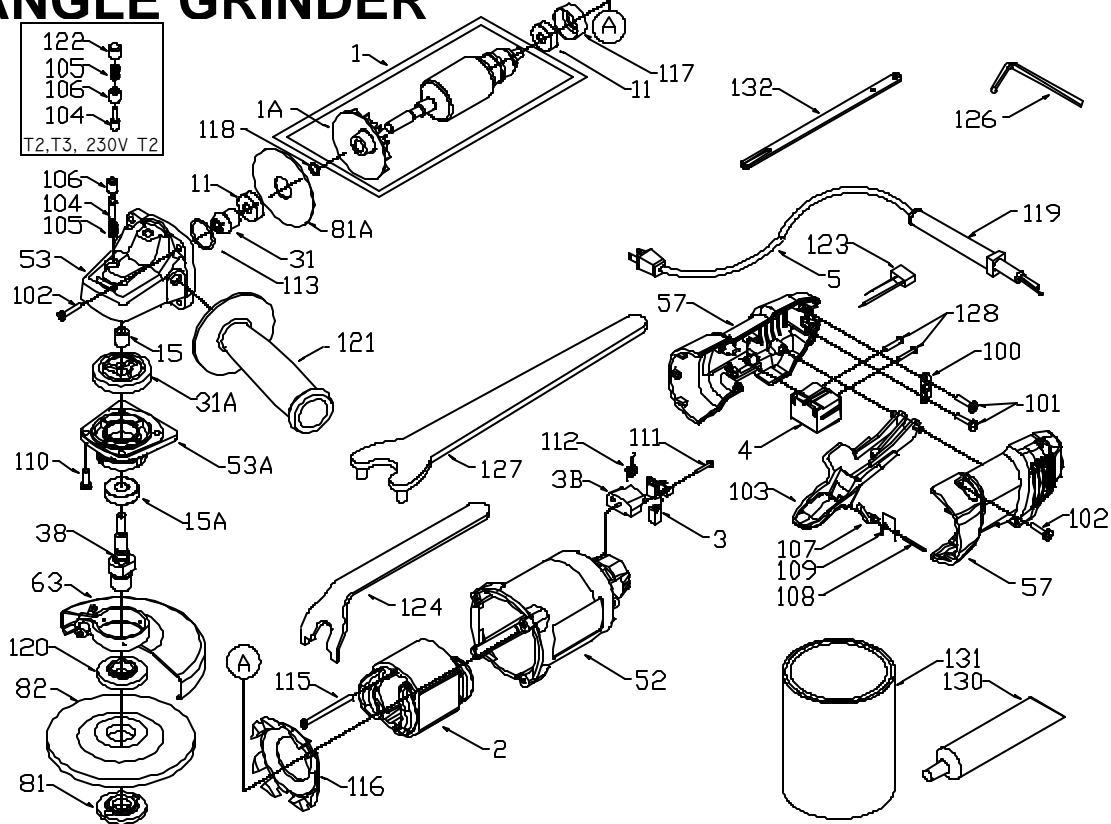


PORTER-CABLE

RIGHT ANGLE GRINDER

WARNING: Electrical repairs should only be attempted by trained repairmen. Contact the nearest Porter-Cable Service Center or other competent repair center.

7406



Ref. No.	Part No.	Description	Ref. No.	Part No.	Description
1	891502**	Armature, 120V T3 & T4		892913	Spindle Lock Pin, T4, 230V T2
	885334	Armature, 120V T1 & T2	105	884259	Spring
	885547	Armature, 230V	106	884260	Spindle Lock Cup, 120V T1
1A	884248**	Armature Fan		887022	Spindle Lock Cup, 120V T2 & T3, 230V T
2	885335	Field, 120V		892914	Spindle Lock Cup, T4, 230V T2
	885549	Field, 230V	107	884265	Lever
3	884257	Brush Holder/Brush Assy., 120V	108	884266	Pin
	886297	Brush Holder/Brush Assy., 230V	109	884267	Spring
3B	690740	Brush Holder Base	110	878262	Screw
4	884241	Switch	111	879298	Screw
5	872258	Cord, 120V	112	868775	Spring
	885552	Cord, 230V	113	697029	O-Ring
11	855216**	Bearing	115	891012	Screw
15	841767	Bearing	116	883145	Baffle
15A	883096	Bearing	117	694432	Brq. Mount
31	888241**	Pinion, 120V T3 & T4	118	847564	Retaining Ring, T1, T2 Only
	882740	Pinion, 120V T1 & T2, 230V	119	810716	Strain Relief
31A	888242	Gear, 120V T3 & T4	120	887029	Inner Flange, 120V
	882742	Gear, 120V T1 & T2, 230V		191604	Inner Flange, 230V
38	887304	Shaft, 120V	121	699681	Aux. Handle, Before Ser. 010150
	885550	Shaft, 230V		886610	Aux. Handle, After Ser. 010150
52	883144	Motor Hsq.	122	887020	Button, 120V T2 & T3, 230V T1
53	886655	Gear Hsq., T1,T2,T3, 120V T1 After Ser. 010150, 120V T2 & T3, 230V T1	123	887613	Filter, 230V
	892911	Gear Hsq., 120V T1 Before SN 010150 & T4, 230	124	48233	Spanner Wrench, 120V
53A	884250	Gear Hsg. Cover	126	48245	Hex Wrench, 5/32" Before Ser. 010150
57	884279	Handle		884298	Hex Wrench, 4mm (After Ser. 010150)
63	884261	Wheel Guard, Type 27	127	100110	Spanner Wrench, 230V
	55292	Wheel Guard Kit, Optional	128	696796	Screw
		Type 1: includes 55300 Spacer	130	n 48222	Lubricant, 5½ oz.
81	884263	Retaining Nut, 120V	131	n 875667	Lubricant, 4 lb.
	100080	Retaining Nut, 230V			
81A	886154	Brq. Retainer			
82	884244	Disk, Abrasive			
100	861434	Cord Clamp			
101	882185	Screw			
102	882189	Screw			
103	884242	Switch Actuator			
104	883171	Spindle Lock Pin, 120V T1			
	887021	Spindle Lock Pin, 120V T2 & T3, 230V T1			

ACCESSORIES: (Optional)

132	842323	Wrench Holder
*	55296	Abrasive Backup Kit, Includes:
*	886014	Retaining Nut
*	55300	Spacer

* Not Shown
** See Service Notes

PARTS LIST NO. 892925 - 01/11/02

Copyright© 2002 Porter-Cable Corporation

PORTER-CABLE
PROFESSIONAL POWER TOOLS

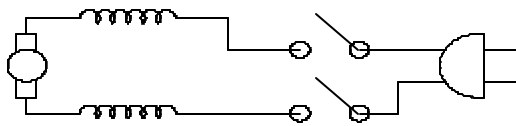
7406

SERVICE NOTES

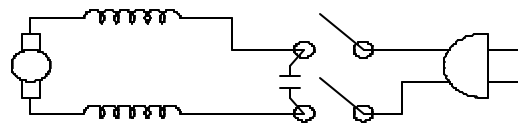
ARMATURE FAN REPLACEMENT - REF 1A

When replacing an armature fan it will be necessary to mark the fiberglass sleeve at the location of the old fan and press the new fan to that mark. Assemble using Loctite®'s Superbond® No. 416.

Wiring Diagrams



120V



250V

ARMATURE, FAN END BEARING, AND PINION - T3 & T4 REF. 1, 11, & 31

When servicing T3 & T4 units first press the fan end bearing 1/2" beyond the end of the armature shaft, then press the pinion flush with the end of the armature shaft. This will properly locate the bearing and the pinion.