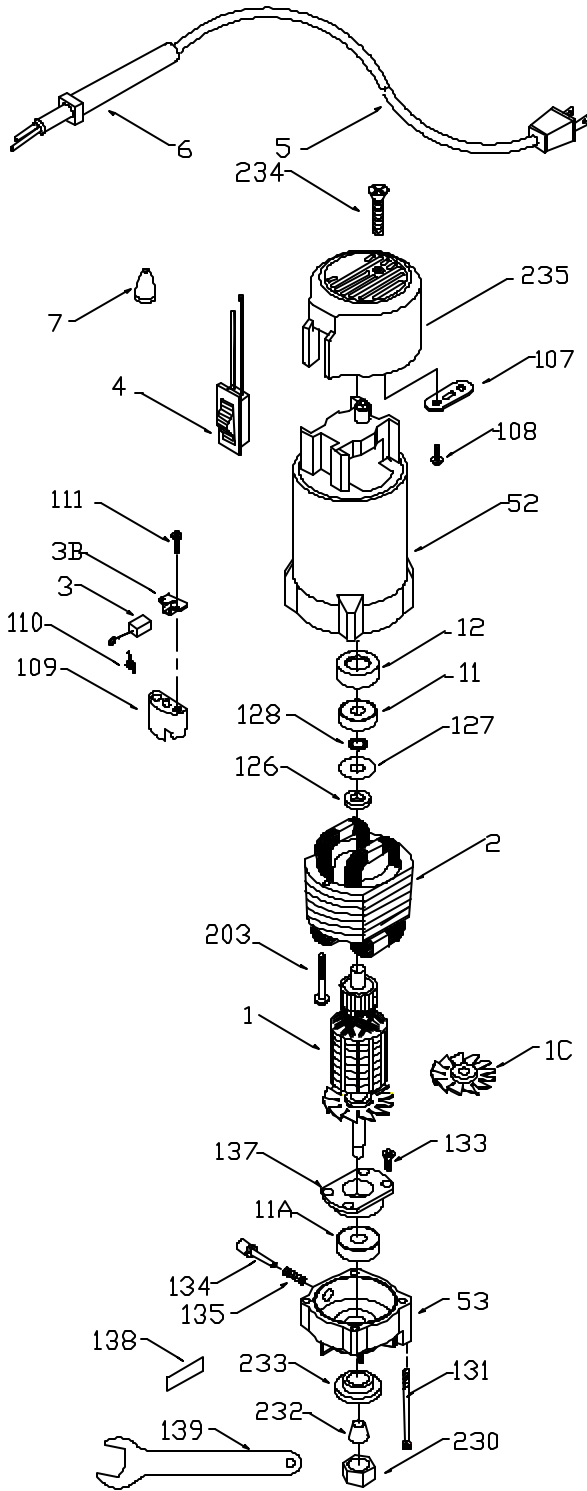


PORTER-CABLE

LAMINATE TRIMMER

WARNING: Electrical repairs should only be attempted by trained repairmen. Contact the nearest Porter-Cable Service Center or other competent repair center

7301
7309
7311
7318
7320
73100



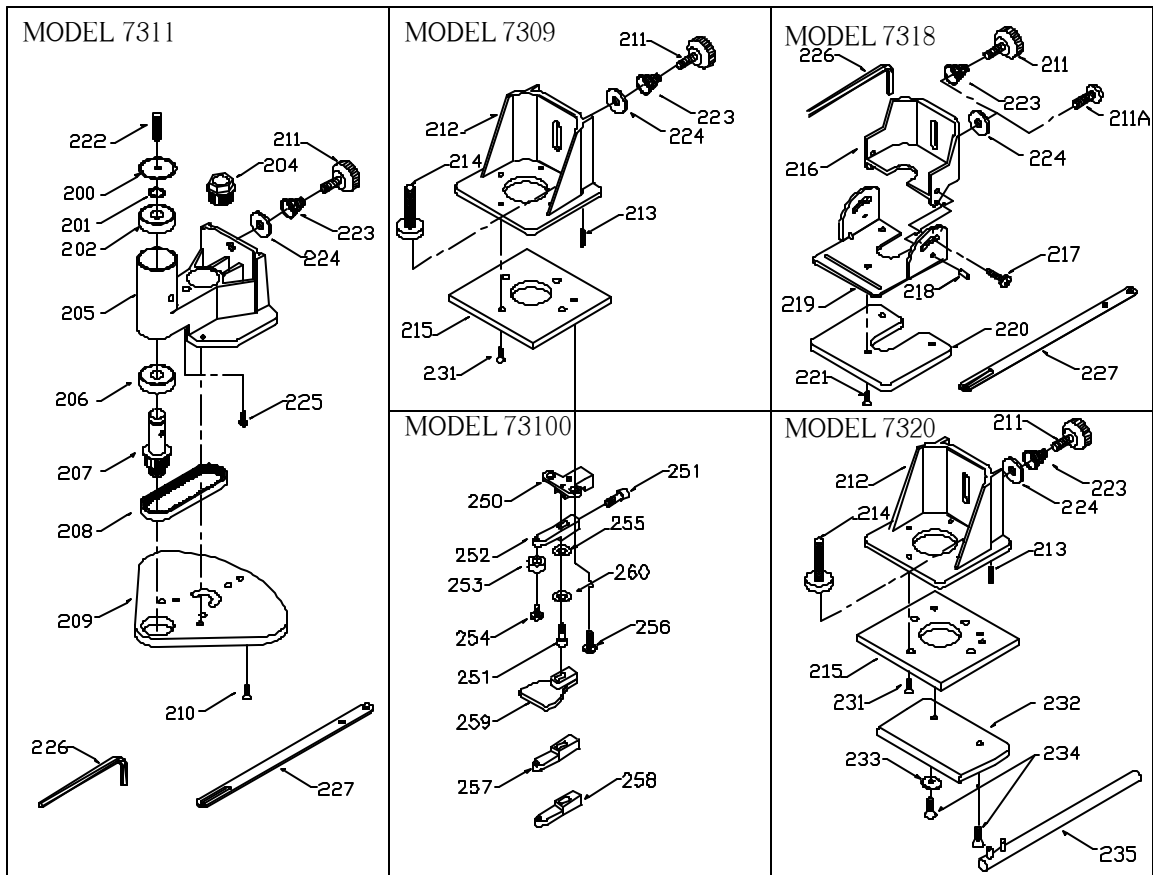
Ref.

No.	Part No.	Description
1	872862**	Armature, 120V
n	889542	Armature, 220V T3
	882248	Armature, 220V T1 & T2
1C	878745	Armature Fan (Current Shaft W/O Knurl)
	845339	Armature Fan (Early Shaft with Knurl)
2	891117	Field, 120V
n	889511	Field, 220V T3
	891213	Field, 220V T2
	891213	Field, 220V T1
3	888386	Brush & Holder Assy., 120V T2, Incl.: Ref. 3, 111
	690741	Brush, 120V T1
	888028	Brush, 220V
3B	690742	Brush Holder, T1 Only
4	887131	Switch, All T2
	882294	Switch, All T1
n	889498	Switch, 220V T3
5	872258	Cord, 120V
	685593	Cord, 220V Euro
6	810716	Strain Relief
7	682063	Wire Connector
11	855284	Ball Bearing
11A	855287	Ball Bearing
12	694432	Bearing Mount
52	887284	Motor Hsg., 120V T2, Incl.: Ref. 3, 111
n	889500	Motor Housing, 220V T3
	891214	Motor Hsg., 220V T2, Incl.: Ref. 3, 111
	876728	Motor Housing, All T1
53	698699	Front Housing, Incl.:
*	874536	Heli-Coil
107	861434	Cord Clamp
108	882185	Screw
109	690740	Brush Holder Base
110	868775	Brush Spring
111	879298	Screw, All T2 & 220V T3
	854805	Screw, All T1
126	698394	Insulator
127	695893	Washer
128	849328	Spacer
131	694015	Screw
133	803157	Screw
134	698708	Spindle Lock
135	698709	Spring
137	874537**	Retainer
138	885833	Caution Label, Spindle-Lock
139	44745	Collet Wrench
203	695185	Screw
230	844642	Collet Nut
232	844651	Collet, 1/4"
	889516	6MM Collet
233	849826	Retainer
234	872708	Screw
235	698696	End Cap
*	887666	Lead, T2

ACCESSORIES (Optional)

*	892898	Carrying Case, T2, (Plastic), Incl.:
*	887712	Latch
*	872828	Insert
*	873308	Cover
*	872827	Carrying Case, T1, Incl.:
*	872828	Insert
*	873308	Cover

7301 7309 7311 7318 7320 73100



7311 OFFSET BASE

Ref.

No.	Part No.	Description
200	698928	Cap
201	698165	Retaining Ring
202	883096	Bearing
204	699952	Drive Pulley
205	874731	Base Casting
206	694147	Bearing
207	880822	Shaft Assy., (T2)
	698704	Shaft Assy., (T1)
208	698419	Belt
209	42313	Sub Base
210	802289	Screw
211	876641	Thumb Screw, Incl.: Ref. 223, 224
222	881034	Set Screw, T2
223	876676	Spring
224	859359	Washer
225	694772	Screw, (late T2)
226	48245	Allen Wrench, T1
	698110	Allen Wrench, T2
227	842323	Wrench Holder

7309 ADJUSTABLE BASE & 7320 UNDERSCRIBE BASE

Ref.

No.	Part No.	Description
211	876641	Thumb Screw, Incl.: Ref. 223, 224
212	876674	Base
213	875497	Screw
214	874017	Thumb Screw
215	42242**	Sub-Base
223	876676	Spring
224	859359	Washer
231	873982	Screw for current sub-Base with counter-bored Holes
	802289	Screw for early Sub-Base with Countersunk Holes
232	878511	Base, 7320
233	878513	Eccentric, 7320
234	893071	Screw, 7320
235	878507	Adjusting Wrench, 7320

73100 EDGE GUIDE (For Use With 7309 Base)

Ref.

No.	Part No.	Description
250	873967	Guide Base
251	873649	Screw
252	699909	Guide
253	872848	Roller
254	872847	Screw
255	802995	Washer
256	882184	Screw, for use with 7309 Base
	689229	Screw, for use with 3101 T2 Base
257	699911	Bevel Guide
258	699907	Straight Guide
259	699913	Guide
260	802648	Lockwasher
*	843076	Allen Wrench

7318 TILT BASE

Ref.

No.	Part No.	Description
211	876641	Thumb Screw (Early), Incl.: Ref. 223, 224
211A	884063	Screw, (Current)
216	698773	Base
217	872944	Screw
218	698775	Pin
219	882026	Bracket
220	42319	Sub Base
221	802768	Screw
223	876676	Spring (Early)
224	859359	Washer
226	698110	Allen Wrench
227	842323	Wrench Holder

SERVICE NOTES

7301

7309

7311

7318

7320

73100

7309 SUB-BASE / SCREWS

Early sub-bases had countersunk mounting holes and were attached with flat head screws.

Current sub-bases have counter-bored mounting holes and are attached with pan head screws. This allows adjustment of the sub-base position.

All replacement sub-bases are the current style, and are supplied with proper mounting screws.

73100 GUIDE BASE

Early 73100 guides were supplied with guide base (Ref. 250). The "current" style adjustable sub-base now used on the 7310 base has a counter-bored hole under one of the guide base mounting flanges. The new guide base (Ref. 250) has a larger mounting flange to "bridge" the counter bore in the new sub-base. The new guide base may be used on either style sub-base and will be supplied for all service requirements.

ARMATURE / BEARING RETAINER

The bearing retainer (Ref. 137) mounting hole countersinks have been deepened in later units to provide more clearance between the screw heads and the armature fan.

When installing a new armature into an older unit, it may be necessary to (A) deepen the countersinks, or (B) install a new bearing retainer to provide fan clearance.

7318 THUMB SCREW / SPRING / SCREW

Early versions used the same Thumb Screw (Ref. 211) and Spring (Ref. 223) to attach all three Bases (7309,7311,7318), to the Motor Unit. Later versions use a special Screw (Ref. 211A), (in place of the Thumb Screw and Spring), to attach the 7318 Tilt Base to the Motor Unit. This special Screw allows the machine to work closer to vertical obstructions. This special Screw can be used with earlier machines.