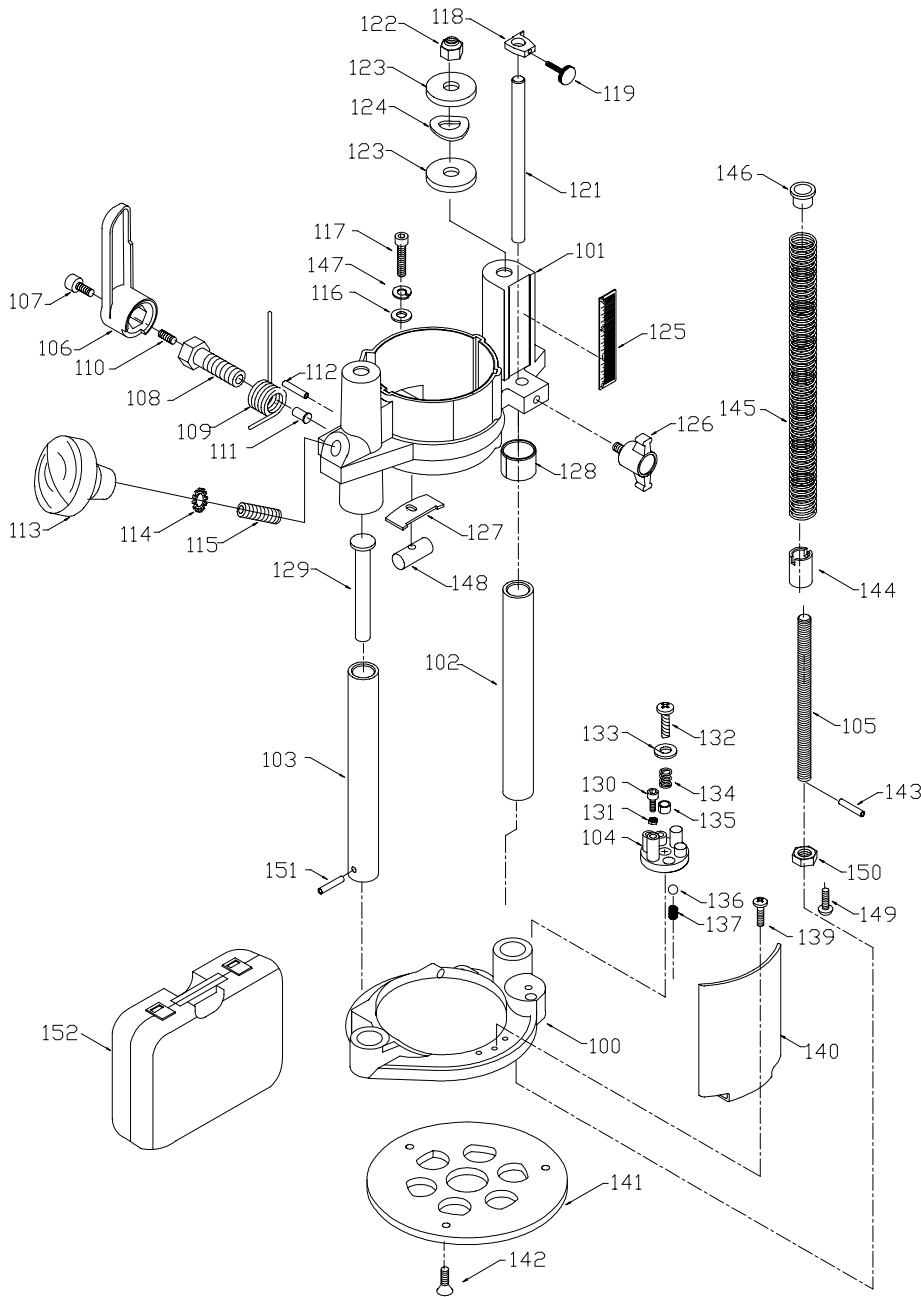


PORTER-CABLE

PLUNGE ROUTER BASE

6931



Ref.

Ref. No.	Part No.	Description
100	896772	Base & Column Assy., T2 Incl: Ref. 102, 103, 112
	872964	Base & Column Assy., T1 Incl: Ref. 102, 103, 112
101	699395	Adapter Housing Incl: Ref. 125, 128
102	897187	R. H. Column, T2
	699398	R. H. Column, T1
103	897187	L. H. Column, T2
	872728	L. H. Column, T1
104	698805	Turret
105	896769**	Stop Screw, T2
	699689	Stop Screw, T1
106	892552	Lock Lever
107	872242	Screw
108	699675	Clamp Screw
109	699562	Spring
110	699563	Set Screw
111	699552	Clamp Plug
112	872729	Rolled Pin
113	875050	Knob & Stud, Current Units
	800995	Knob, Early Units, Use with Ref. 115
114	802425	Washer
115	699560	Set Screw, Early Units
116	802752	Washer
117	873309	Screw
118	699399	Pointer
119	881290	Knob
121	699991	Depth Rod
122	892174	Nut
123	699553	Stop Collar
124	850802	Spring Washer
125	897243	Scale, T2
	699967	Scale, T1
126	873772	Knob, T2
127	873315**	Clamp Block
128	699558	Bushing
129	699400	Spring Guide
130	863082	Screw
131	862641	Nut
132	883806	Screw
133	803060	Washer
134	850552	Spring
135	895591	Washer
136	860687	Ball
137	693848	Spring, T1
139	850596	Screw
140	872762	Chip Deflector
141	42186	Sub-Base, Incl Ref 142
142	688860	Screw, Sub-Base with Countersunk Holes
	874117	Screw, Sub-Base with Counter-Bored Holes
143	699557	Rolled Pin, T1
144	699556	Bushing Stop
145	872938	Spring
146	872789	Shoulder Bearing
147	802430	Lock Washer
148	873316**	Special Nut
149	882187	Flat Head Screw, T1
150	903595**	Nut, T2
151	872729	Rolled Pin, T1
152	n 902829	Carrying Case, 693LRPK, 693VSPK
	n 888190	Carrying Case, 693PK
*	897261	Caution Label
*	872723	Caution Label
*	842323	Wrench Holder, Early Units
*	48245	Hex Wrench

* Not Shown

** See Service Notes

LOCK NUT - Ref. # 150 & STOP SCREW - Ref. # 105

When installing Lock Nut Ref. 150 on Stop Screw Ref. # 105 the Lock Nut should be tightened until it is flush with the end of the Stop Screw or the end of the Stop Screw is up to 0.025" below surface of Lock Nut. The Stop Screw should not extend beyond the Lock Nut and should not be tight against the Base Housing as this will cause binding and the base will not move up and down on the columns freely.

CLAMP BLOCK/SPECIAL NUT REF. 127, 147, & 148.

Early units used a thick (approx. $\frac{1}{2}$ ") clamp block (Ref. 127) with internal threads, and a 1" long clamp screw (Ref. 117). Current units use a thin (approx. $\frac{1}{8}$ ") clamp block (Ref. 127) and a special nut (Ref. 148) with a longer ($1\frac{1}{4}$ ") clamp screw and a lock washer (Ref. 147). Early units requiring clamp block replacement should be converted to the current configuration.