



# 351 352 352VS

Ref.	No.	Part No.	Description
	1	680967	Armature
	1A	884110	Air Baffle, T3, T4
		696169	Air Baffle T1, T2
	2	887736	Field 351 T4
		680977	Field 351 & 352 T1, T2, T3
		887737	Field 352VS T4
		876672	Field 352VS T1, T2, T3
	3	887717	Brush & Spring, T4
		875946**	Brush/Spring/Holder Assy. T1, T2, T3
	3A	823727	Brush Cap, T4
	3B	887716	Brush Holder, T4
	3C	801271	Brush Holder Retainer, T4
		878568**	Brush Holder Retainer, Late T1, T2, T3
		875945**	Brush Holder Retainer, Early T1
	4	849317	Switch
	4A	876962	Speed Control/Triac Assy. 352VS
	5	839549	Cord, T4
		846674	Cord, T2, T3
		875697	Cord, T1
	11	855216**	Bearing
	11A	859293	Fan End Bearing
	12	803856	Bearing
	13	804211	Bearing
	15	838833	Bearing, T2, T3, T4
		839837	Bearing, T1
	23	848537	Seal
	31	878567	Drive Pinion, T2, T3, T4
		688257	Drive Pinion, T1
	31A	854380	Driven Gear
	37	848530	Drive Belt
	37A	695738	Drive Pulley
	37B n	899259**	Drive Pulley
	40	849131	Drive Shaft
	40A	878569	Idler Pulley Shaft, T2, T3, T4
		849155	Idler Pulley Shaft, T1
	51	896446	Motor Frame, T4 Incl: Ref. 12, 11, 15, 177
		879694	Motor Frame, T2, T3 Incl: Ref. 12, 15, 177
		876328	Motor Frame, T1, Incl: Ref. 12, 15, 54A, 177
	53A	848523	Gear Housing Cover
	54A	875923	Drive Belt Cover 351, 352
		876125	Drive Belt Cover 352VS
	57	894605	Handle Set, T2, T3, T4
		696098	Handle Set, T1
	59	890679	Housing Cover, 351 T4
		884108	Housing Cover, 351 T3
		885125	Conv. Kit, Incl.: Ref. 1A, Convert T2 to T3 351
		878350	Housing Cover, 351 T2
		849157	Housing Cover, 351 T1
		890680	Vacuum Housing, 352 & 352VS T4
		885124	Conv. Kit, Incl.: Ref. 1A Convert T2 to T3 352 & 352VS
		696171	Vacuum Housing, 352 & 352VS T1
	64	878380	Frame Protector Bar, T2, T3, T4
		848513	Frame Protector Bar, T1
	65	848526	Drive Pulley
	65A	848527	Idler Pulley
	66	878570	Arm, Idler Pulley, T2, T3, T4
		695790	Arm, Idler Pulley, T1
	90A	39331	Dust Bag
	*	696167	Dust Bag Assy., Incl: 90A, 101, 102, 103
	93	810231	Belt Tracking Screw
	101	839330	Bag Spring
	102	877970	Bag Elbow, Current
		882671	Bag Elbow/Support Kit, Early
	103	877967	Bag Support
	104	852003	Bottom Gasket
	105	852004	Left Side Gasket, 351,352 T1
	106	852005	Right Side Gasket, 351,352 T2
	107	849808	Pulley Screw
	108	859359	Pulley Outer Washer
	109	848508	Pulley Inner Washer
	110	804454	Washer
	111	802943	Nut
	112	847994	Cover Screw
	113	847564	Bearing Ring, 351 Before S/N 68530, 352, 352VS Before S/N 390796
	115	697451	Gear Housing Screw
	116	848524	Gasket
	117	848512	Tracking Spring

Ref.	No.	Part No.	Description
	118	847267	Tracking Nut
	120	801374	Screw
	121	853455	Snap-Ring, T2, T3, T4
		849192	Nut, T1
	122	848551	Thrust Washer
	124	878579	Tracking Box Assy.
	125	848514	Tension Spring
	126	844107	Screw, T4
		856481	Screw, T1, T2, T3
	128	848565	Cover Screw
	129	696085	Knob Set
	130	802995	Washer, Early Units
	131	879678	Knob Screw
	132	843464	Strain Reliever, T2, T3, T4
	133	886538	Knob Mtg. Screw
	134 n	848547**	Cork Shoe, Early Units
	135 n	903400**	Shoe Assy, Current Units Incl: Ref. 134, 135, 137, 139
		848509**	Steel Shoe, Early Units
	136 n	848510**	Shoe Clamp, Early Units
	137 n	802764	8-32 X 3/8" Screw, Current Units
		883485	8-32 X 1/2" Screw, Early Units
	139	869687	Nut
	140	848148	Screw
	141	695812	Screw & Lockwasher
	142	852067	Dust Scoop, 352, 352VS, T1 Only
	143	849819	Screw, T1 Only
	144	848564	Housing Screw
	145	893792	Screw
	146	848148	Right top Screw, T2, T3, T4
		878057	Right top Screw, T1
	147	848148	Left Top Screw, T2, T3, T4
		847048	Left Top Screw, T1
	148	875322	Screw
	149	878404	Baffle, T2, T3, T4
		848534	Baffle, T1
	150	877651	Motor Support Kit, T1, T2, T3 Incl: Ref. 3, 3C
	151	882184	Screw, T1, T2, T3
	153	844694	Bearing Plug, T1, T2, T3 351 Below Ser. 066561 & 352VS Below Ser. 344099
	154	803168	Screw, T1, T2, T3
	158	883483	Screw, T4
		853480	Screw, T1, T2, T3
	162	852068	Gasket, Early 352 T1 Cannot Furnish
	164	848754	Ground Screw
	169	849314	Terminal, T1, T2, T3
	170	850218	Bearing Spacer, 351 Before S/N 68530, 352, 352VS Before S/N 390796
	174	696039	Locator
	175	801530	Washer
	177	810523	Pulley Thrust Washer
	179	682063	Wire Connector
	181	695813	Spacer
	183	872835	Sheet Metal Screw, Early
		858008	Self-Threading Screw, Current
	184	695868	Wear Plate
	185	695944	Wear Plate, T1 Only
	186	695803	Spring
	187	695789	Lever
	188	877537	Cover
	189	804424	Key
	190	850410	Felt Oiler
	192	842610	Load Spring, T1, T2, T3
	193	698027	Triac-Enclosure
	194 n	882187	Screw
	195	882185	Screw
	196	849314	Terminal
	*	810238	Fan
	*	875334	Brush Lead, T2, T3
	*	887720	Brush Lead, T4
			ACCESSORIES: (Optional)
	*	801945	Lubricant, 5 1/2 oz.
	*	801946	Lubricant, 4 lbs.
	*	891582	Carrying Case
	*		Not Shown
	**		See Service Notes

# 351 352 352VS

## SERVICE NOTES

### BRUSH, SPRING, & HOLDER ASSY. (T1, T2, T3) REF. 3

Early versions used a Brush & Spring Assembly with a separate Brush Holder. Current version uses a Brush, Spring, & Holder Assembly. The current Holder Assembly has a "tab" for a plug-on wire terminal. This "tab" must be removed when installing the new Brush, Spring, & Holder Assembly in an early machine.

### DRIVE SHAFT, PULLEY, GEAR, NUT, KEYS (351 and 352 TYPE 1) RFFS. 31A, 40, 65, 111, & 189

Early T1 versions used two "Jam" Nuts (Ref. 111), to lock the Drive Shaft (Ref. 40), Drive Pulley (Ref. 65), and Gear (Ref. 31A), together. Current versions use two Woodruff Keys (Ref. 189), and one nut (Ref. 111), to hold the assembly together.

All Drive Shafts, Drive Pulleys, and Gears supplied for service will have keyways. They may be used in the early versions without keys.

### DUST BAG ELBOW (352 and 352VS) REFS. 90A & 102

Early Elbows had a flange that the Bag Support locked onto. Current Elbows do not have a flange. A new Elbow cannot be used with an early Bag Support. A new Bag Support can be used with either style Elbow. The Elbow/Support Kit contains both: a new Elbow and a new Bag Support.

### Cork & Steel Shoe and Clamp - Refs. 134, 135, & 136

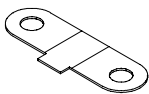
The Cork and Steel Shoes Ref.s 134 & 135, are being glued together and the Clamp Ref. 136 is being eliminated. The Shoe Assy. 903400 includes the new one-piece shoe and attaching hardware. The parts are totally interchangeable and can be serviced either way. The old style parts will continue to be available until inventory is used up then will be subbed to the new Shoe Assy. 903400.

### DRIVE PULLEY, BEARING RING, BEARING SPACER - REFS. 37B, 113, & 170

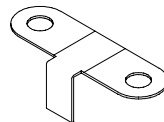
Some early units were produced with a Ring Ref. 113 and Spacer Ref. 170 under the Drive Pulley Ref. 37B. Current Drive Pulleys are produced with a shoulder that eliminates the need for the Ring and Spacer. When servicing early units with Drive Pulley 899259 discard the Ring Ref. 113 and Spacer Ref. 170 and tighten the Drive Pulley firmly on the Drive Pinion Ref. 31.

### BRUSH HOLDER RETAINER (T1, T2, T3) REF. 3C

Two different style Brush Holder Retainers have been used. See sketches for identification.



**LATE T1,T2, T3**



**EARLY T1**

# SERVICE NOTES

351  
352  
352VS

## WIRING DIAGRAMS

