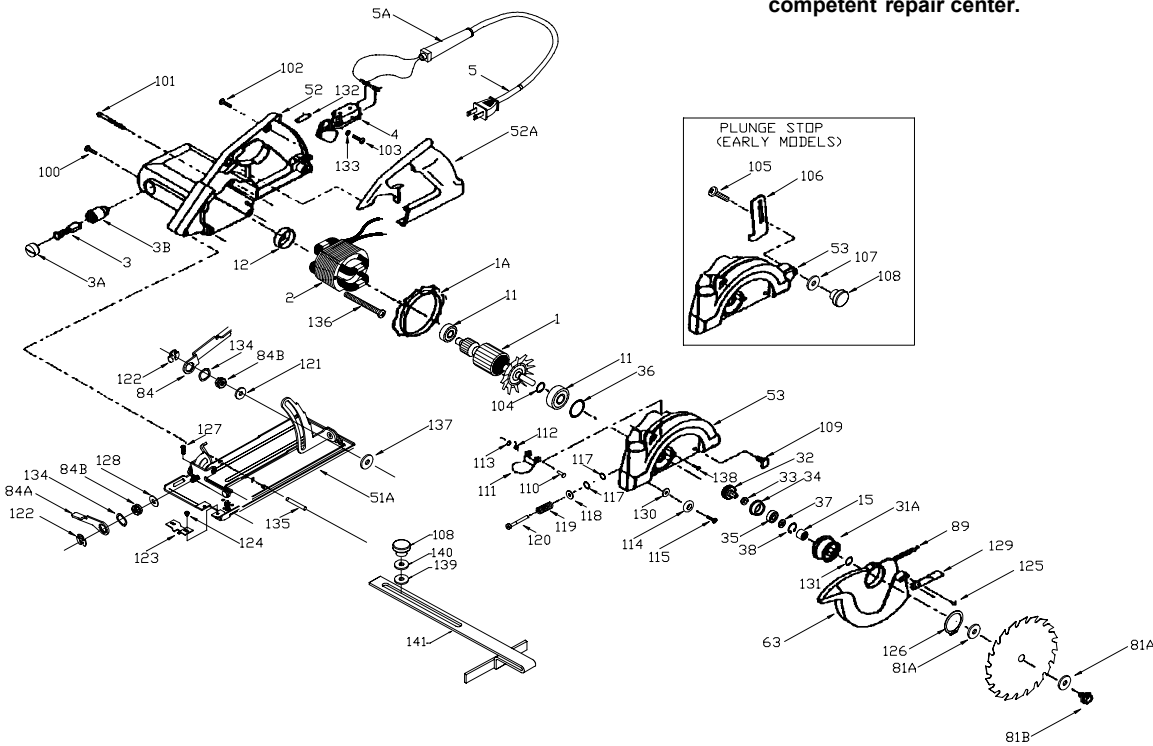


PORTER-CABLE

SAW BOSS® Circular Saw

345

WARNING: Electrical repairs should only be attempted by trained repairmen. Contact the nearest Porter-Cable Service Center or other competent repair center.



Ref. No.	Part No.	Description	Ref. No.	Part No.	Description	Ref. No.	Part No.	Description
1	872928	Armature, T2, T3	84A	696669	Lever	696995	696995	Roller Pin, Early Units
	698236	Armature, T1	84B	879186	Special Nut	136	872906	Field Screw, T2, T3
1A	872861	Fan Baffle, T2, T3	89	696674	Guard Spring	696665	696665	Field Screw, T1, CF
	696675	Fan Baffle, T1	100	881538	Screw, Brush Holder	137	697615**	Spacer, (Early)
2	872929	Field, T2, T3	101	881082	Screw, Housing	138	845619	Screw
	698237**	Field, T1 (before S/N 024730, and after S/N 045362)	102	879678	Screw, Handle	139	801530	Washer
	698725**	Field, T1 (S/N 024730 thru 045362)	103	802565	Screw, Switch Mounting	140	889465**	Washer
3	874076	Brush	104	844571	Retaining Ring	*	872870	Armature Fan, T2, T3
3A	803483	Brush Cap	105	696659**	Carriage Bolt, T1, Early T2	*	696535	Armature Fan, T1
3B	873497	Brush Holder	106	696663**	Plunge Stop, T1, Early T2	*	803104	Brush Lead
4	698389	Switch	107	801530**	Washer, T1, Early T2	*	48306	Blade Wrench
5	872258	Cord	108	889702**	Knob, Current Rip Fence			
5A	810716	Strain Reliever	109	810776**	Knob, Early Rip Fence, T1, Early T2			
11	694147**	Bearing		879525	Bolt, T3	*	878499**	Lubricant, 5 1/2 oz.
12	696660	Bearing Mount		698206	Bolt, T1, T2	*	879751**	Lubricant, 4 lbs.
15	838833	Bearing, Inner Jackshaft	110	697382	Rivet	*	698460	Base Insert, Incl.:
31A	872927	Jackshaft Assy., T2, T3, Incl.:	111	697381	Exhaust Cover	*	n 801530	Washer
	698235	Jackshaft Assy., T1, Incl.:	112	697402	Spring	n	n 810776	Knob
32	873527	Jackshaft & Gear, T2, T3	113	878877	Retaining Ring	141	53125**	Rip Guide, Incl.: Ref. 108, 139, & 140
	698234	Jackshaft & Gear, T1	114	698367	Rubber Bumper	*	39332	Vacuum Attachment
33	698242	Bearing	115	879548	Screw, Bumper	*	696167	Dust Bag Assembly, Incl.:
34	696642	Jackshaft Cover, T2, T3	117	878381**	Seal	*	877694	Dust Nozzle
	696642	Jackshaft Cover, T1	118	802995**	Washer (Early)	*	839330	Dust Nozzle Retainer
35	688672	Spacer	119	696677	Spring	*	44344	Carrying Case
36	862006**	O-Ring	120	878407	Spindle Lock Pin	*		Not Shown
37	697505	Lock Detent Washer	121	859359	Washer	**		See Service Notes
38	865015	Snap-Ring	122	696656	Retaining Ring			
51A	897446	Base Assy., Current Units, Incl.: Ref. 135	123	696658	Guide Plate			
	696648	Base Assy., Early Units	124	696796	Screw			
52	883747	Motor Housing	125	844009	Screw			
52A	883748	Handle Cover	126	696667	Retaining Ring			
53	883569**	Gear Hsg./Upper Guard, Late T2, T3, Incl.: Ref. 101, 109	127	696685	Screw, (45 & 90 Deg. Stops)			
	696638**	Gear Hsg./Upper Grd, T1, Early T2	128	696668	Bellville Washer			
63	696641	Lower Guard	129	696661	Lever			
81A	893683	Blade Washer	130	858792	Washer			
81B	696657	Blade Bolt	131	865015	Snap Ring			
84	879524	Lever	132	698608**	Switch Spacer			
			133	802214	Lock Washer (Current)			
			134	698241	Wave Washer			
			135	893521	Bolt, Current Units			

ACCESSORIES (Optional)

FIELDS

Units between serial numbers 024730 and 045362 require field 698725. This field has a layer of tape around its fan end O. D.. All other numbers use field 698237 (without tape).

BEARING / O-RING

Before installing a fan end bearing into the gear case on a 345 saw, take a new o-ring (862006) and stretch it with your fingers (like a rubber band), so that it will fit snugly into the gear housing ring groove. Assemble bearing to bore use 609 Loctite.

SWITCH SPACER

Some units had a #698608 switch spacer installed. This spacer is not used on currently produced units.

GEAR HOUSING/UPPER GUARD AND PLUNGE STOP

Type 1 and early Type 2 units were equipped with a plunge depth stop. Later units are not.

SEALS, WASHER

Early units used two seals (697179 & 697180), and a washer (802995), to seal around the spindle lock shaft. Current units use a one-piece seal (878381) that replaces all three of the early parts.

SPACER (REF. 137)

This spacer was used on early models. It is not required and may be omitted.

LUBRICANT

The lubricant has been changed from a brownish gelatin like grease (801945/801946) to a heavier yellow type grease which is better suited for this application. Either lube is acceptable, however they should not be mixed. When changing types always thoroughly clean the lubed area and parts and add an appropriate amount of fresh lubricant.

RIP GUIDE REF. 141, RIP GUIDE WASHER REF. 140, & RIP GUIDE KNOB REF. 108

Early rip guides were produced using a round knob # 810776, Ref. 108, and did not have washer # 889465, Ref. 140. Current rip guides have a wing type knob # 889702, Ref. 108, and incorporate a washer # 889465, Ref. 140, between the knob, Ref. 108 and washer # 801530, Ref. 139.