

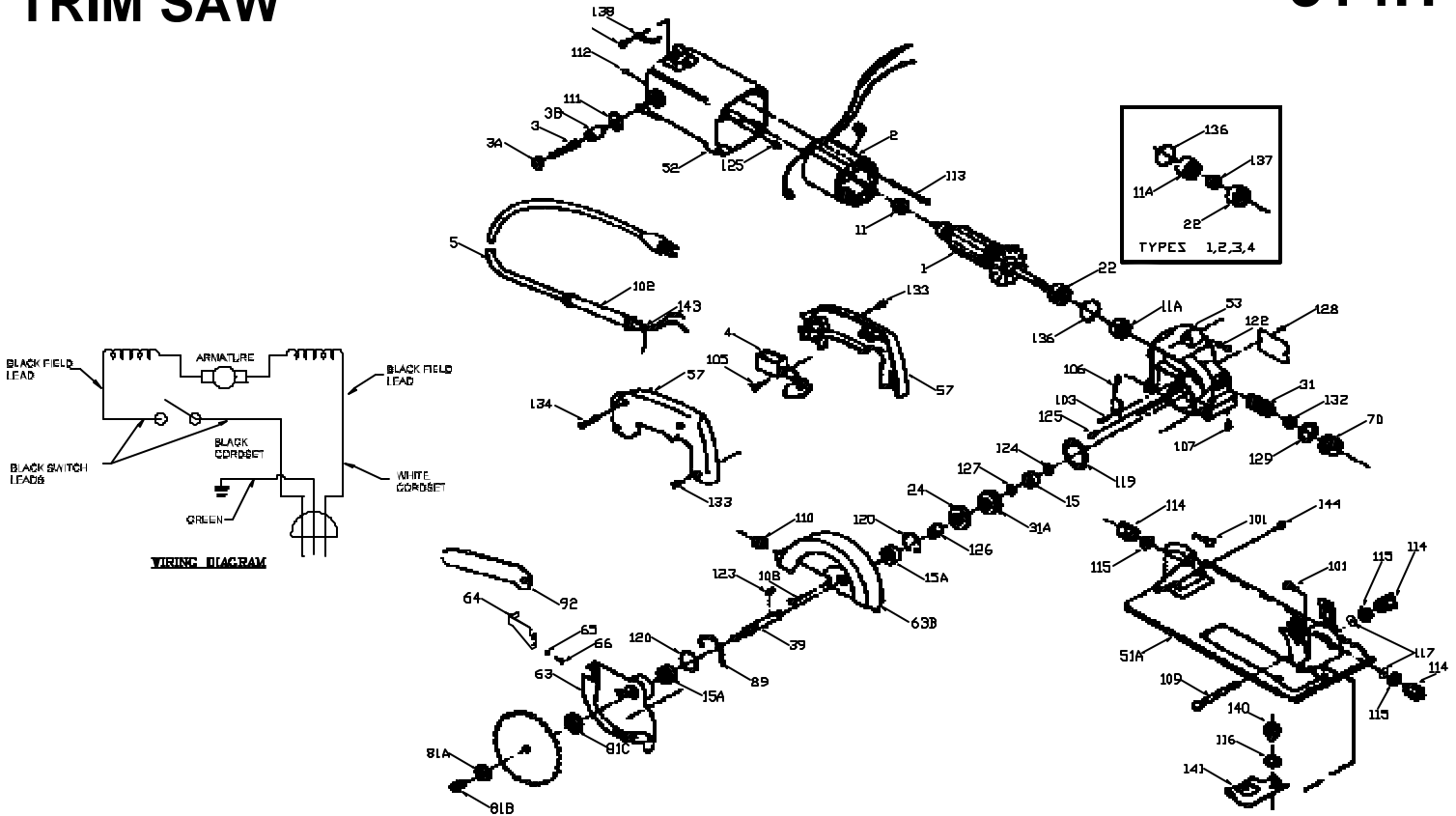
PORTER-CABLE

TRIM SAW

WARNING: Electrical repairs should only be attempted by trained repairmen. Contact the nearest Porter-Cable Service Center or other

314

314H



Ref. No.	Part No.	Description
1	875165	Armature, 314 T5, 314H
	872643**	Armature, 314 T4
	872648**	Field
3	857761	Brush
3A	823567	Brush Cap
3B	823565	Brush Holder
4	888153	Switch
5	846674	Cord
11	855198	Comm. End bearing
11A	855289	Fan end Bearing, 314 T5, 314H
	855286	Fan end Bearing, 314 T1 Thru T4
15	855284**	Jackshaft Inner Bearing
15A	860572	Outer Bearing
22	802947	Armature Seal, 314 T5, 314H
	861660	Armature Seal, 314 T1 Thru T4
24	859381	Jackshaft Seal
31	803614	Worm
31A	859337**	Worm Gear
39	859336	Jackshaft
51A	859344	Base Assembly
52	857229	Motor Housing, 314
n	907407	Motor Housing, 314H
53	878992	Gear Housing, 314 T5
	857230**	Gear Housing, 314 T1 Thru T4
n	907408	Gear Housing, 314H
57	861205	Handle
63	690687	Guard , 314 Incl.: Ref. 64,65,66
n	907406	Guard , 314H
63B	881182**	Upper Guard, 314
n	907409	Upper Guard, 314H
64	867570	Lever
65	802648	Lever Washer
66	858008	Lever Screw
70	842756	Oil Plug
81A	859341	Outside flange
81B	859342	Blade Screw

Ref. No.	Part No.	Description
81C	861608	Inside Flange
89	859345	Guard Spring, 314 T5, 314H
	690686	Guard Spring, 314 T1 Thru T4
92	859484	Blade Wrench
101	859352	Bolt
102	810716	Strain Reliever
103	848754	Screw
105	856481	Switch Mounting Screw
106	860466**	Baffle - CF, Early Units Only
107	861306	Adjusting Screw, 10-24 X 3/4
	688395	Adjusting Screw, 10-32 X 1/2
108	854607	Upper Guard Screw
109	859353	Depth Adjusting Bolt
110	860542	Bumper
111	802211	Brush Holder Washer
112	843081	Brush Holder Screw
113	802607	Field Screw, 314 T3 Thru T5, 314H
	826229	Field Screw, 314 T1 & T2
114	882835	Knob
115	802417	Lock Washer
116	800249	Washer
117	859359	Flat Washer
119	860062**	O-Ring, Late 314 T1, 314 T2 Thru T5, 314H
	859339	Gasket, Early 314 T1
120	859382	Bearing Ring
122	848148	Gear Housing Screw
123	859400	Key
124	802677	Nut
125	810425	Plug (Early)
126	864737**	Collar, Late 314 T1, 314 T2 Thru T5, 314H
	859338**	Collar - CF, Early 314 T1
127	681932**	Washer
128	801374	Screw
129	839766	Gasket

Ref. No.	Part No.	Description
132	801372	Worm Nut
133	842816	Screw
134	860573	Handle Cover Screw
136	802942	Snap-Ring, 314 T5, 314H
	802302	Snap-Ring, 314 T1 Thru T4
137	859511	Shaft Collar, All 314's Except T5
138	849314	Terminal
140	810776	Knob
141	859402	Base Insert, Incl: Ref. 140 & 116
143	847143	Cord Lock
144	878813	Pivot Screw
*	48245	Oil Plug Wrench
*	877487	Arm. Fan, 314 T5, 314H
*	859522	Arm. Fan - CF, 314 T1 Thru T4
*	803442	Lubricant, 5 1/2 Ounce Tube
*	803443	Lubricant, 1 Gallon Can
*	682063	Connector

ACCESSORIES: (Optional)

*	53125	Rip Guide
*	12870	24 tooth Carbide Blade, Std. Equip.
*	12057	Plywood Blade
*	12121	Special Blade for cutting Plexiglas
*	12122	Special Blade for Metal Lamina

* Not Shown
** See Service Notes

All Above Blades are 4 1/2" diameter with 3/8" Diameter Mounting Hole, Rated for 4500 RPM Operation.

314 314H

SERVICE NOTES

GEAR CHAMBER SEALING AND JACKSHAFT COLLAR - REF. 119 & 126

Early Type 1 Models used:

Gasket #859339
Collar #859338

Late Type 1 Models & Type 2 through Type 5 Models use:

O-Ring #860062
Collar #864737



Interchanging the above parts will misalign gears. Always replace a gasket with a gasket and an O-Ring with an O-Ring.

UPPER GUARD: O-RING/GASKET - REF. 119

The upper guard (Ref. 64B) has a groove to accept the O-Ring; however, always use a gasket on early models and an O-Ring on late models. **DO NOT** convert or interchange these parts. Always replace what was removed (i.e. O-Ring or gasket).

O-RING - REF. 119

Lightly coat the O-Ring with oil to facilitate ease of assembly.

GEAR - REF. 31A

Early gears had hash marks on one side of the hub. Later gears have a groove cut into one side of the hub. The gear should be oriented so that the hash marks (early gear) or the groove (later gear) face the blade side of the saw. The two styles are interchangeable. Only the current style will be supplied for service.

JACKSHAFT INNER BEARING AND SPACER - REF. 15 & 127

Early production used a spacer (Ref. 127) between the inner bearing (Ref. 15) and the gear (Ref. 31A). When replacing the inner bearing (Ref.15) with the 855165 bearing, the spacer (Ref. 127) may be omitted. Current production uses the #693441 bearing and no spacer (Ref. 127).

ARMATURE/FIELD T1, T2, & T3 - REF. 1 & 2

The Type 1, Type 2, and Type 3 armature and field are no longer available. The Type 4 armature and field may be used as a set to service Type 1, Type 2, and Type 3 machines.

BAFFLE

The baffle is no longer used. The baffle can be omitted from older saws without effecting performance.