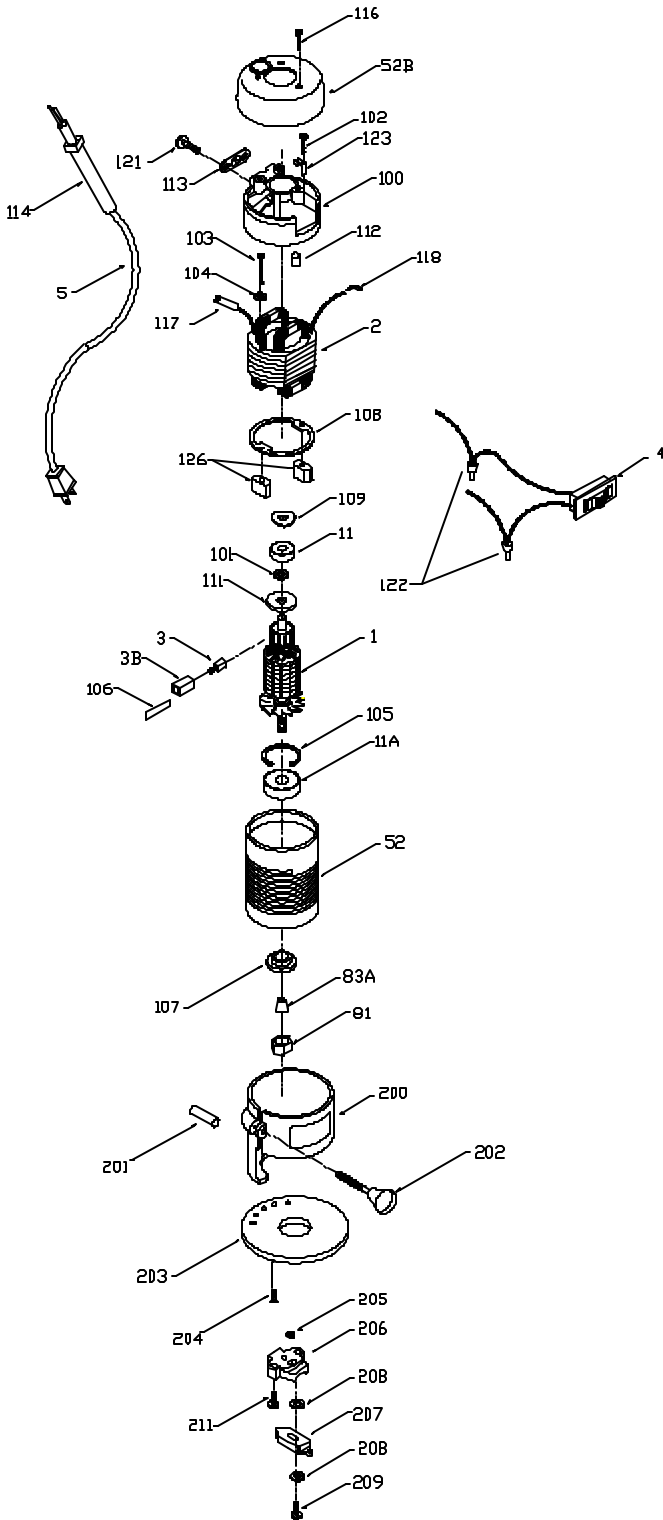


PORTER-CABLE LAMINATE TRIMMER

WARNING: Electrical repairs should only be attempted by trained repairmen. Contact the nearest Porter-Cable Service Center or other

3091
3092



Ref.

No. Part No. Description

1	883524**	Armature, T2 After S/N 093501
2	681036**	Field
3	850842	Brush
3B	849326	Brush Holder
4	882294	Switch
5	872258	Cord
11	855284	Commutator End Bearing
11A	855287	Fan End Bearing
52	683060**	Motor Housing
52B	810315	Motor Cap
81	844642	Collet Nut
83A	844651	Collet
100	680735**	Motor Bracket
101	849328	Spacer (Early Version)
102	852554	Brush Holder Screw
103	849821**	Field Screw
104	802430	Lock Washer
n	879716	O-Ring
105	802302	Fan End Bearing Ring
106	692344	Brush Holder Insulator
107	849826	Fan End Bearing Retainer
109	842610	Spring Washer
108	849324	Field Clamp Ring
111	849327	Seal Washer (Early Version)
112	695936**	Commutator End Bearing Plug
113	851630	Cord Clamp
114	843464	Strain Relief
116	876384	Motor Cap Screw
117	845757	Insulating Sleeve
118 n	845946	Terminal
121	860715	Cord Clamp Screw
122	846249	Wire Nut
123	852452	Brush Holder Clip
126	810643	Field Retainer
200	849027	Base
201	849028	Index Pin
202	810281	Base Clamp Screw
203	810272	Sub Base
204	803158	Sub Base Screw
*	44745	Collet Wrench
*	878745	Fan, T2 After S/N 093501
*	877478	Fan, Late T1 (W/Smooth Shaft)(CF)
*	810286	Fan, Late T1 (W/Knurled Shaft)
*	690701	Guide Assembly (Guide Assy. Was Standard On Early Units- May Be Added To Current Units) Includes The Following:
205	869687	Guide Nut
206	849042	Guide Holder:, Incl:
*	847169	Dowel Pin
207	810274	Guide
208	802995	Guide Washer
209	802753	Guide Screw
211	860220	Guide Holder Screw
*	848984	Guide Setting Gauge, CF

* Not Shown

** See Service Notes

3091

3092

SERVICE NOTES

TYPE 2:

Early Type 2 units (before S/N 093500) requiring replacement of any of the following items: an Armature (Ref. #1), a Field (Ref. #2), a Motor Housing (Ref. #52), or a Field Screw (Ref. #103) must have the following items installed as a set:

Ref. #	Part No.	Description
1	883524	Armature
2	681036	Field
52	683060	Motor Housing
103	849821	Field Screw (2 req'd.)

MOTOR BRACKET/BEARING PLUG:

Motor Brackets (Ref. #100) originally had one hole for one bearing plug (Ref. #112). Current Motor Brackets have three holes, requiring three bearing plugs (Ref. #112). Only the current motor bracket (requiring three bearing plugs) is supplied for Service.