

PORTER-CABLE

OSCILLATING SPINDLE SANDER

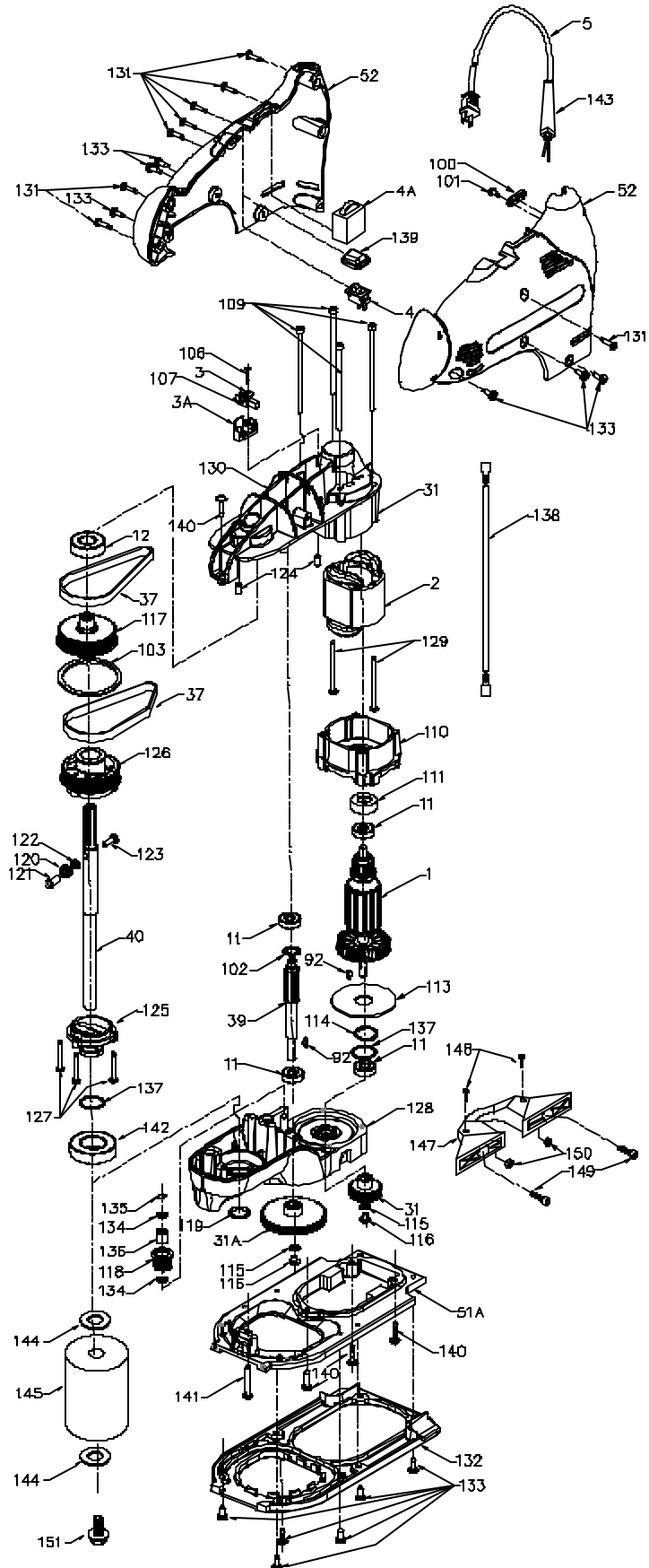
WARNING: Electrical repairs should only be attempted by trained repairmen. Contact the nearest Porter-Cable Service Center or other competent repair center.

121

Ref. No.	Part No.	Description
1	897957**	Armature. Incl.: Ref. 114
2	897958	Field
3	884257	Brush Assembly
3A	690740	Base-Brush Hldr
4	887454	On/Off Switch
4A	893016	Var. Speed Switch
5	867853	Cord
11	855216	Bearing
12	855214	Bearing
31	889323	Pinion
31A	889433	Gear
37	889325	Belt
39	889434	Jackshaft
40	889333	Shaft
51A	889432	Base
52	897959	Housing Set
92	841002**	Key
100	861434	Cord Clamp
101	882185	Screw
102	896147	Washer
103	896148	Retaining Ring
106	879298	Screw
107	868775	Spring
109	876110	Screw
110	892158	Housing
111	694432	Bearing Mount
113	886154	Retainer
114	847564	Retaining Ring .297" O.D.
n	802203	Retaining Ring .208" O.D.
115	802318	Washer
116	893707	Screw
117	889326	Pulley
118	897963	Idler. Incl.: Ref. 136
119	876800	Seal
120	897965	Bearing
121	889341	Sleeve
122	889339	Spacer
123	892956	Screw
124	842597	Plug
125	889315	Lower Cam
126	889317	Upper Cam
127	872521	Screw
128	897960	Housing
129	893025	Screw
130	889436	Support
131	879678	Screw
132	889322	Sub Base
133	886538	Screw
134	895314	Washer
135	892958	Retaining Ring
136	895211	Bearing
137	697029	O-Ring
138	895718	Lead Assy
139	877797	Dust Boot
140	890753	Screw
141	886748	Screw
142	873601	Bearing
143	810716	Strain Relief
144	898519	Washer
145	1347803	2" Drum (Standard)
n	1347800	3/4" Drum (Optional)
n	1347801	1" Drum (Optional)
n	1347802	1 1/2" Drum (Optional)
147	895935	Edge Guide Assy
148	803685	Screw
149	889309	Screw
150	890643	Nut
151	876053	Blade Bolt
*	895318	Dust Nozzle

ACCESSORIES: (Optional)

*	12100	Drum Kit
*	12101	Adapter Plate (PC Router Table)
*		Not Shown
**		See Service Notes



ARMATURE (REF. 1) & PINION KEY (REF. 92)

Units between Serial Numbers 10160 and 10369 were built with an armature pinion keyway that was not cut deep enough. Approximately .020" was ground off the top face of the key. When replacing keys Ref. 92 in these units it will be necessary to grind the replacement key accordingly or if replacing the armature you should replace the key also.