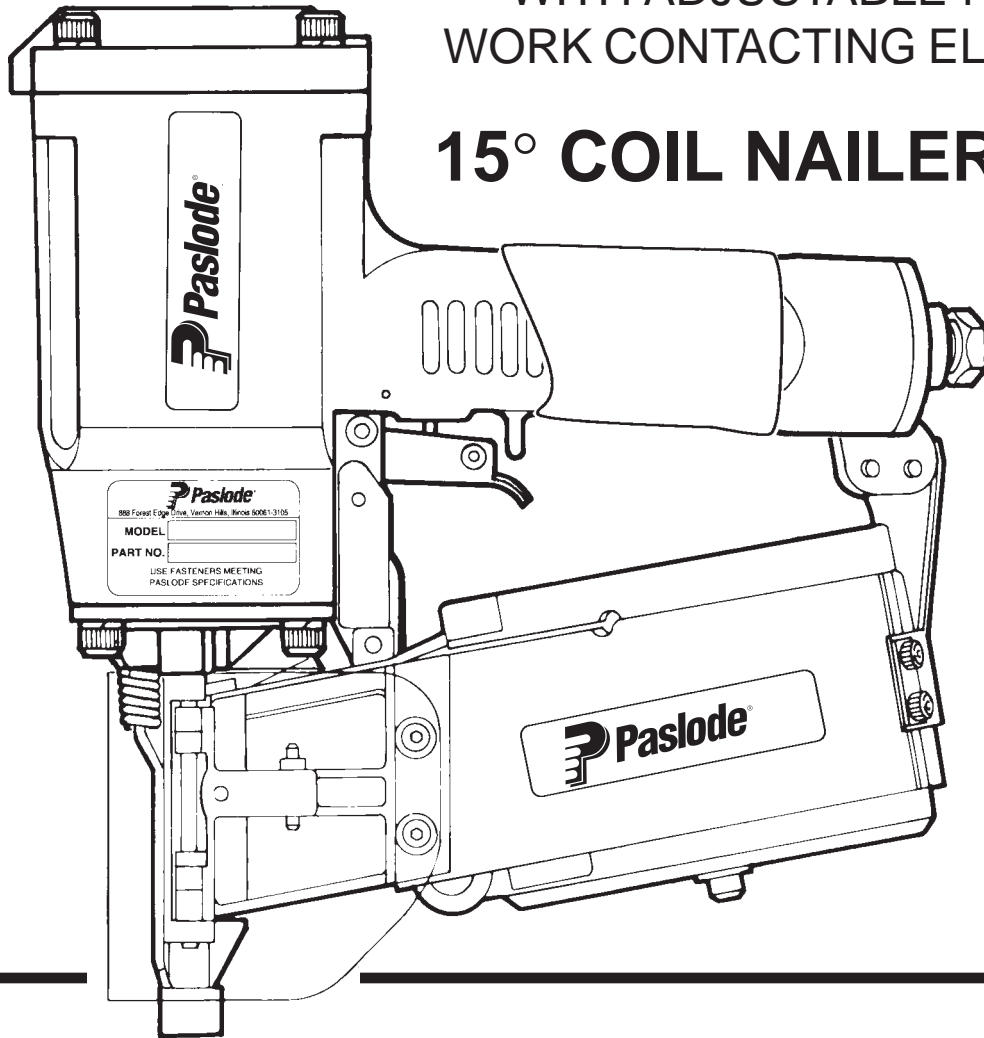




MODEL 15°- 4250/65C COIL NAILER
WITH ADJUSTABLE NO MAR
WORK CONTACTING ELEMENT

15° COIL NAILER



TOOL SCHEMATIC AND PARTS

IMPORTANT!

DO NOT DESTROY

Always refer to safety and maintenance manual #403606 for detailed information on this tool. It is the customer's responsibility to have all operators and service personnel read and understand this information.

PARTS LEGEND

15°- 4250/65C, WITH ADJUSTABLE NO MAR WORK CONTACTING ELEMENT, 500778

1	091362	4	Socket Head Capscrew, 1/4-20 x 1-1/2"	49	402933	1	Flange, Nose
2	002187	6	Lock Washer, 1/4"	50	095417	4	Lock Washer, 5/16"
3	402978	1	Cap, Diffuser	51	009016	4	Socket Head Capscrew, 5/16-18 x 1"
4	091860	3	Nut, Flexloc	52	006787	2	Roll Pin, 3/16" Dia. x 1" Lg.
5	091363	2	Flexloc Thin Nut, #8-32	52a	401697	2	Roll Pin
*6	402932	1	Cap	53	092735	2	Socket Head Capscrew, 1/4 - 20 x 1-1/4"
*7	402955	1	Gasket, Cap	54	402934	1	Nose
8	402959	1	Spring, Main Valve	55	263239	1	Retaining Ring
9	500322	1	Retaining Ring	56	402018	1	End Cap
*10	402962	1	"O" Ring, Upper Valve Piston	57	402084	1	Bumper, Feed Claw Piston
11	402941	1	Upper Valve Piston	58	402024	1	Spring
*12	092729	1	"O" Ring, Lower Valve Piston	59	402038	1	Feed Claw Piston
*13	004163	1	"O" Ring, Lower Valve Piston	*60	091541	1	"O" Ring, Feed Claw Piston
*14	402974	1	"O" Ring, Lower Valve Piston		091541	1	"O" Ring, Cylinder End Seal
15	500321	1	Lower Valve Piston	61	402039	1	Cylinder End Seal
16	405211	1	Seal, Main Valve	*62	402031	1	"O" Ring, Cylinder End Seal
*17	402963	1	"O" Ring, Main Valve Post	63	500637	1	Feeder Body
18	402944	1	Post, Main Valve	64	402027	1	Air Feed Tube
19	070502	1	Button Head Socket Cap Screw	*65	094295	1	"O" Ring Housing
20	400196	1	Gripco Lock Nut 3/8" - 24	66	005562	1	Flat Socket Head Capscrew, 1/4-20 x 1"
21	095412	2	Washer, Driver Blade	*67	402041	1	Torsion Spring, Feed Claw
*22	091539	1	"O" Ring, Piston	68	402486	1	Retaining Ring
23	402951	1	Piston	69	402488	1	Pivot Pin, Feed Claw
▲ 24	402956	1	Driver Blade	70	500636	1	Feed Claw
25	402954	1	Seal, Sleeve	71	402017	1	Hinge Pin, Door
26	406013	1	Sleeve	72	402964	1	Spring, Work Contacting Element
*27	402961	1	"O" Ring, Sleeve	73	009037	2	Socket Head Capscrew, #10-32 x 1/2"
28	091022	1	"O" Ring, Sleeve	74	008388	4	Flat Washer, #10
29	402973	1	Sleeve Bumper	75	402666	1	Bushing
30	403762	1	Bumper	76	500473	1	Upper Work Contacting Element Assembly
31	097748	1	Spring, Valve Pin	77	091733	3	Flexloc Nut, 1/4 - 20
32	097746	1	Valve Pin	78	402486	1	Retaining Washer
33	401958	1	Valve Body	79	402487	1	Pivot Pin, Holdback Claw
*34	092174	1	"O" Ring, Valve Body	80	402037	1	Holdback Claw
35	026133	2	Roll Pin, 1/8" Dia. x 1" Lg.	81	402026	1	Spring, Holdback Claw
36	500472	1	Lower W.C.E. Assembly	82	402053	1	Door
37	500471	1	Tip, Adj. W.C.E.	83	402461	1	Locator
38	402926	1	Housing	84	500777	1	Nameplate
39	402079	1	Pin, Trigger	85	402659	2	Grommet
40	405147	1	Lever	86	015298	2	Socket Head Capscrew, #8-32 x 5/8"
41	405144	1	Trigger	87	500488	1	Grip, Handle
42	402668	1	Retaining Ring	88	402066	1	Cover Magazine
43	401952	1	"O" Ring, Sleeve	89	091613	2	Socket Head Capscrew, #8-32 x 3/8"
44	406010	1	Flange, Sleeve	90	402081	1	Reinforcement Plate
45	004502	1	Socket Head Capscrew, #10-32 x 5/8"	91	402083	1	Latch Plate
46	004238	4	Lock Washer, #10	92	402655	2	Logo, Magazine
47	404938	2	Logo, Housing	93	402082	2	Nut Plate
48	091208	1	"O" Ring, Housing	94	091866	2	Roll Pin, 1/8" Dia. x 3/4" Lg.
				95	403296	1	Cap, Post

* Denotes normal wear items

**NOTE: Make sure Warning Label (500457) is properly affixed. Label available at no charge through the Service department.

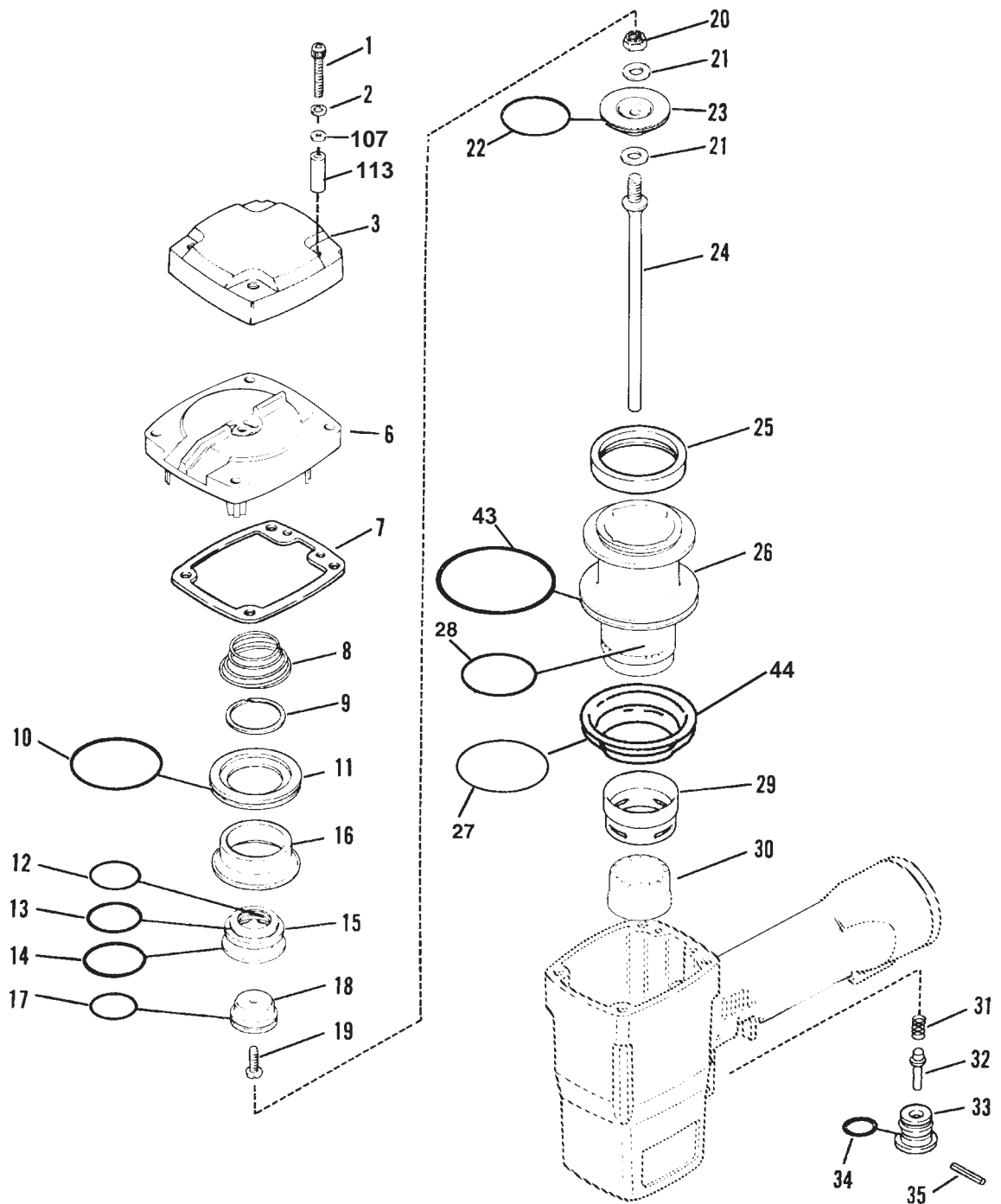
▲ Apply Loctite 242 (Blue) Part No. 093500

→ Denotes new change



WARNING

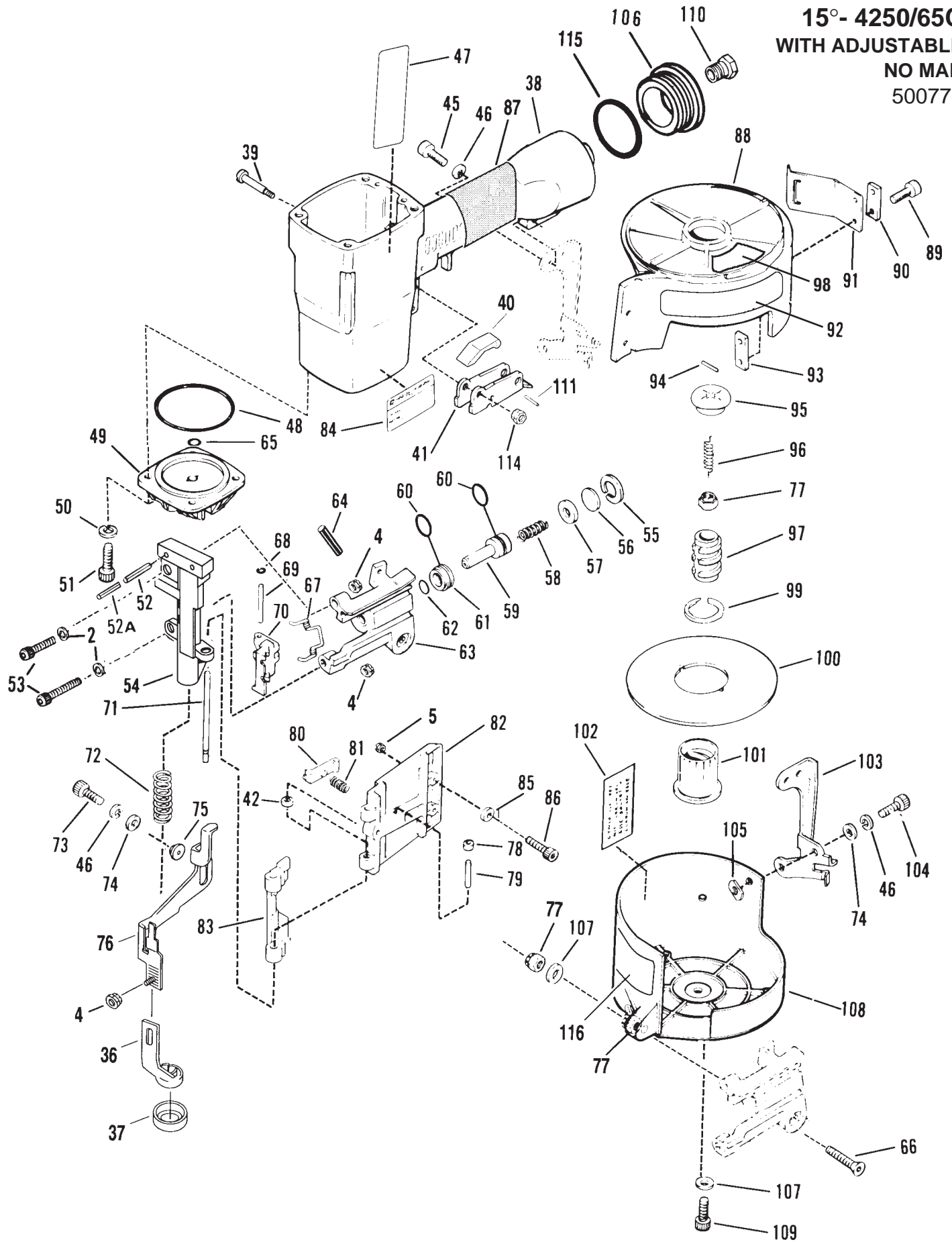
All parts must be periodically inspected and replaced if worn or broken. Failure to do this can affect the tool's operation and present a safety hazard.



PARTS LEGEND - Continued

96	402071	1	Extension Spring, Post	106	401940	1	End Plug
97	406046	1	Inner Center Post	107	091447	6	Flat Washer, 1/4"
98	500718	1	15° Label	108	402063	1	Magazine, 2-1/2"
99	402075	1	Retaining Ring	109	009041	1	Socket Head Capscrew, 1/4-20 x 3/4"
100	402074	1	Nail Plate Assembly	110	091622	1	Reducing Pipe Bushing, 1/4" x 3/8"
101	402067	1	Outer Center Post	113	402979	4	Spacer, Diffuser
102	402905	1	Label	114	404325	1	Stop Nut, #8 - 32
103	402946	1	Bracket, Magazine	115	091591	1	"O" Ring
104	004224	2	Socket Head Capscrew, #10-32 x 3/8"	**116	500457	1	Warning Label
105	402089	2	Teenut				

15°- 4250/65C
WITH ADJUSTABLE
NO MAR
500778



PARTS OFFERED AS ASSEMBLIES

500596 Post Assembly

Includes

77	091733	1	Flexloc Nut, 1/4 - 20
94	091866	1	Roll Pin, 1/8" Dia. x 3/4" Lg.
95	403296	1	Cap, Post
96	402071	1	Extension Spring, Post
97	406046	1	Inner Center Post
101	406047	1	Outer Center Post

500595 Tray Assembly

Includes

77	091733	1	Flexloc Nut, 1/4 - 20
94	091866	1	Roll Pin, 1/8" Dia. x 3/4" Lg.
95	403296	1	Cap, Post
96	402071	1	Extension Spring, Post
97	406046	1	Inner Center Post
99	402075	1	Retaining Ring
100	402074	1	Nail Plate Assembly
101	406047	1	Outer Center Post

405212 Main Valve Assembly

Includes

9	500322	1	Retaining Ring
10	402962	1	"O" Ring Upper Valve Piston
11	402941	1	Upper Valve Piston
12	092729	1	"O" Ring, Lower Valve Piston
13	004163	1	"O" Ring, Lower Valve Piston
14	402974	1	"O" Ring, Lower Valve Piston
15	500321	1	Lower Valve Piston
16	405211	1	Seal, Main Valve

402940 Cap Assembly

Includes

6	402932	1	Cap
8	402959	1	Spring, Main Valve
9	500322	1	Retaining Ring
10	402962	1	"O" Ring, Upper Valve Piston
11	402941	1	Upper Valve Piston
12	092729	1	"O" Ring, Lower Valve Piston
13	004163	1	"O" Ring, Lower Valve Piston
14	402974	1	"O" Ring, Lower Valve Piston
15	500321	1	"O" Ring, Lower Valve Piston
16	405211	1	Seal, Main Valve
17	402963	1	"O" Ring, Main Valve Post
18	402944	1	Post, Main Valve
19	070502	1	Button Head Socket Cap Screw, #8-32 x 1/2"

402408 Trigger Assembly

Includes

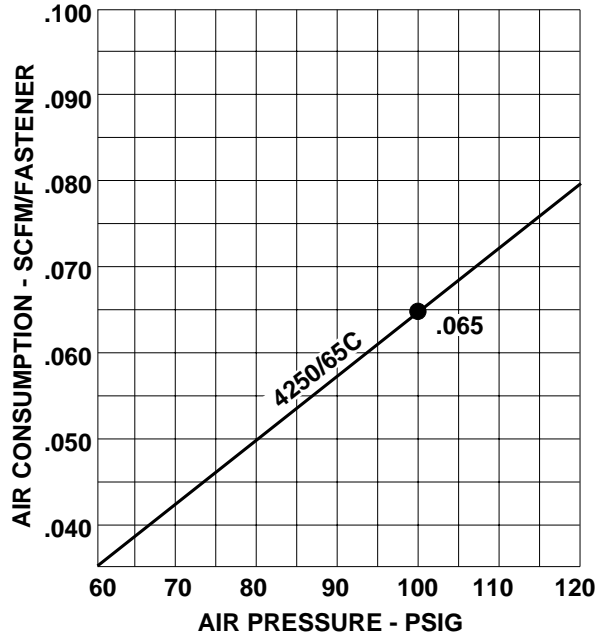
41	405144	1	Trigger
96	405147	1	Lever, Trigger
97	005849	1	Roll Pin, 3/32" Dia. x 5/8" Lg.

403793 Piston Assembly

Includes

20	400196	1	Gripco Lock Nut, 3/8 - 24
21	095412	2	Washer, Driver Blade
22	091539	1	"O" Ring, Piston
23	402951	1	Piston
24	402956	1	Driver Blade

AIR CONSUMPTION CHART



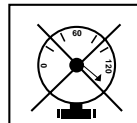
SAFETY INSTRUCTIONS

WEAR EYE AND HEARING PROTECTION

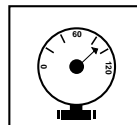
Always wear hearing protection and eye protection devices, including side shields when operating or working in the vicinity of a tool.



DO NOT EXCEED MAXIMUM RECOMMENDED AIR PRESSURE



Operate the tool using only the recommended air pressure. Do not exceed the maximum air pressure marked on the tool. Be sure the air pressure gauge is operating properly and check it at least twice a day.

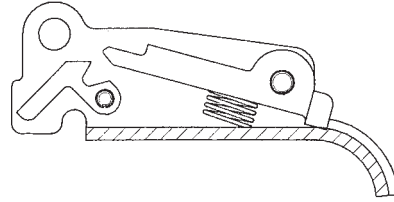


Never use any bottled air or gases such as oxygen to operate the tool since they could cause the tool to explode.

ACCESSORIES

Sequential Operating Kit

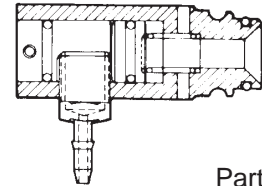
This special attachment is designed for sequential operation (stops "contact" firing). The operator must depress and hold the work contacting element against the work surface before pulling the trigger. This sequence must be repeated each time the tool drives a fastener.



Part No. 406006

Remote Fire Valve

This valve via a positive air signal allows a machine mounted tool to be operated from an automatic air valve or foot pedal system.



Part No. 1X0713

Lubricants and Loctite

Chemplex 710 Lubricant 1 lb.
Lubricating Oil 8 oz.
Lubricating Oil with anti-freeze
Loctite 242 (Blue) 1 oz.

Part No. 403734
Part No. 219026
Part No. 219090
Part No. 093500

Universal Belt Hook

Attaches to cap of tool enabling you to carry tool on belt holder (offered below).

Part No. 219017

Belt Hook Holder

Attaches to work belt and carries tool using the above belt hook.

Part No. 219028

Safety Glasses

Clear
Tinted

Part No. 402510
Part No. 402512

Degreaser Cleaner

Ideal Cleaner for all Paslode Tools

Part No. 219086

