



SERVICE PARTS LIST

BUL. 54-22-0000

1/4 H.P. BENCH GRINDER

REVISED BUL 652-1 DATE FEB. '68

MODEL NO. V-141

Starting Serial No. 52-1001

WIRING INSTR.

Both Model and Serial No. must be furnished to obtain correct parts.

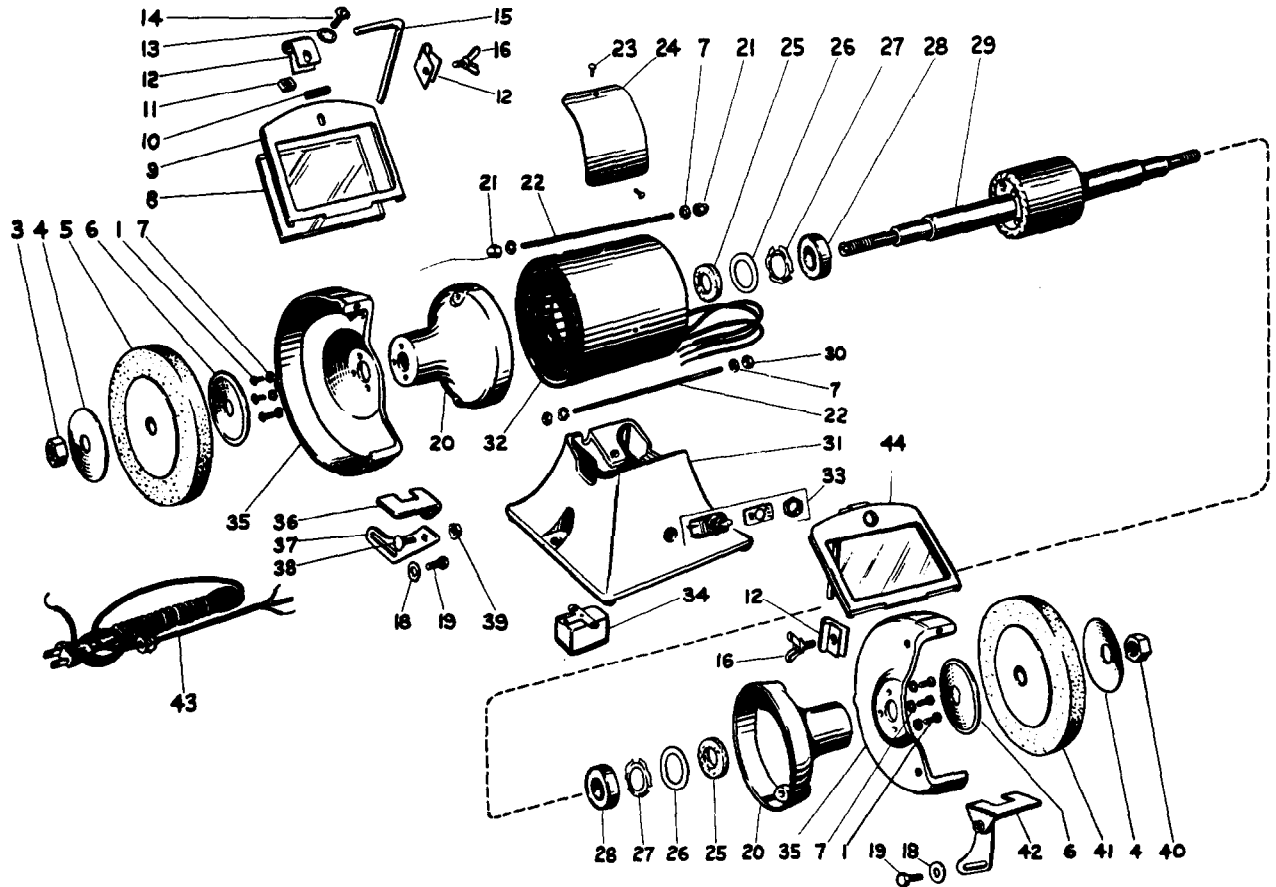


Fig.	Part No.	Name of Part
1	#10-32x3/8"	Rd. Hd. Screw
3	1/2"-20 L. H.	Hex Nut
4	BG-7	Wheel Flange (Outer)
5	6"x3/4"x1/2"Hole	#60 Grit Grinding Wheel
6	BG-5	Wheel Flange (Inner)
7	#10	Lock Washer
8	BG8-1	Safety Shield Glass
9	BG-8	Safety Shield Frame
10	BG8-4	Rubber Tube
11	1/4"-20	Square Nut
12	BG8-2	Clamp
13	1/4" I. D.	Shakeproof Washer
14	1/4"-20x5/8"	Rd. Hd. Mach. Screw
15	BG8-3	Support Rod
16	1/4"-20x5/8"	Wing Bolt
20	BG-3	End Bell
21	#10-32	Hex Nut
22	#10-32 Thrd.	Thru Bolt (Both Ends Threaded)
23	#4x1/4	Name Plate Screws (Driv-In) (2)
24	V-141	Name Plate

Fig.	Part No.	Name of Part
25	BG3-1	Felt Washer
26	BG3-2	Shim
27	BG3-3	Loading Spring
28	ND77503	Ball Bearing
29	BG-6	Rotor Assembly
30	#10-32	Hex Nut
31	BG-1	Base
32	BG-2	Stator (Complete Wound)
33	CH8396-K8	Switch
34	91250-28	R.B.M. Starting Relay
35	BG-4	Wheel Guard
36	BG-9	L.H. Tool Rest
37	BG9-1	Tool Rest Bracket
38	1/4"-20x3/8"	Carriage Bolt
39	1/4"-20	Hex Nut
40	1/2"-20 R. H.	Hex Nut
41	6"x3/4"x1/2"Hole	#46 Grit Grinding Wheel
42	BG-10	R.H. Tool Rest
43	BG-11	Cord & Plug