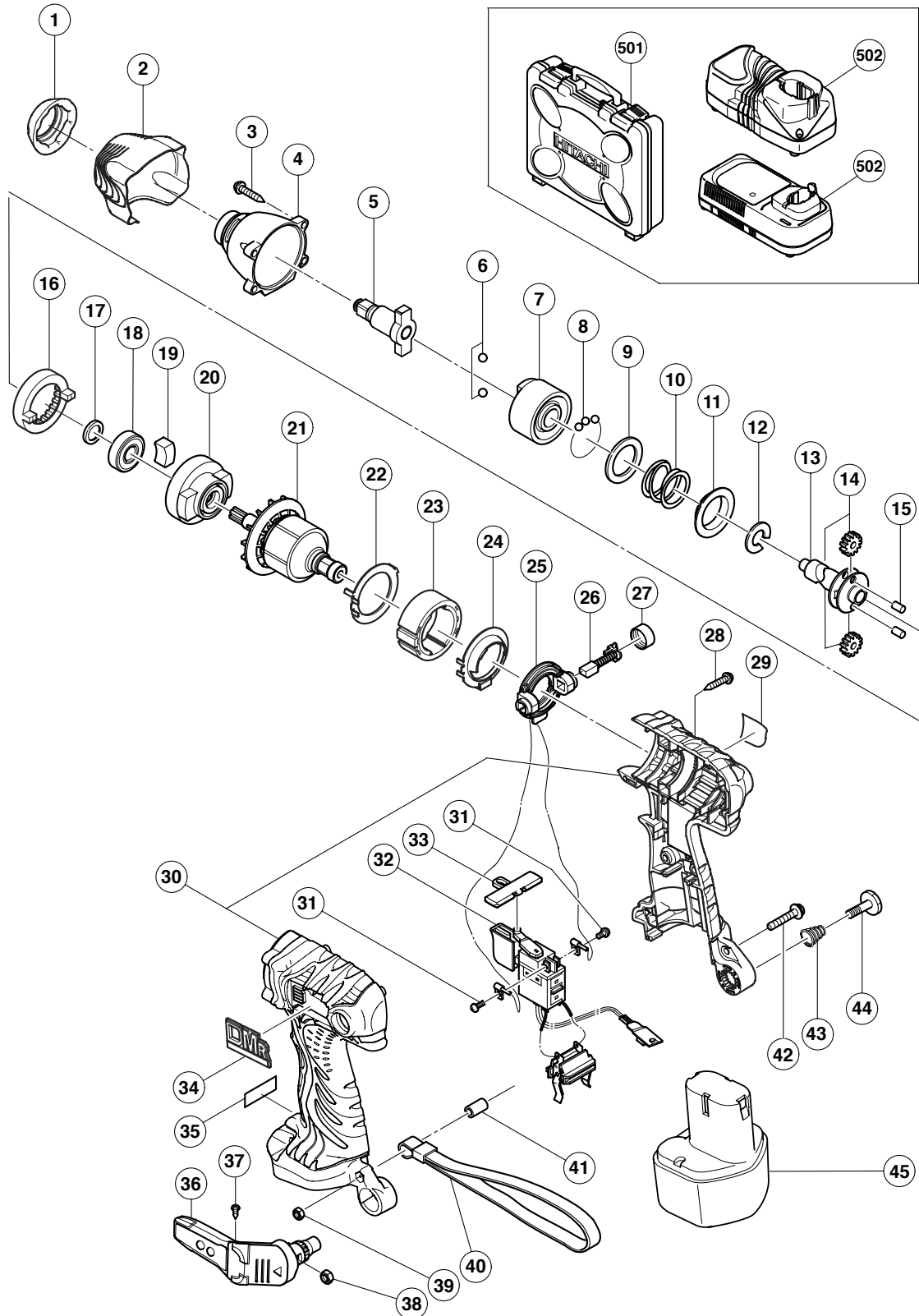


ELECTRIC TOOL PARTS LIST

CORDLESS IMPACT WRENCH Model WR 9DMR

2005 · 4 · 1

(E1)



PARTS

WR 9DMR

| ITEM NO. | CODE NO. | DESCRIPTION | NO. USED | REMARKS |
|----------|----------|--|----------|----------------|
| 1 | 322-727 | FRONT CAP (B) | 1 | |
| 2 | 322-728 | PROTECTOR (C) | 1 | |
| 3 | 319-917 | TAPPING SCREW (W/SP. WASHER) D4X25 (BLACK) | 4 | |
| 4 | 322-172 | HAMMER CASE | 1 | |
| 5 | 322-732 | ANVIL (U) | 1 | |
| 6 | 959-154 | STEEL BALL D5.556 (10 PCS.) | 2 | |
| 7 | 322-730 | HAMMER (F) | 1 | |
| 8 | 959-148 | STEEL BALL D3.175 (10 PCS.) | 28 | |
| 9 | 315-978 | WASHER (J) | 1 | |
| 10 | 320-407 | HAMMER SPRING (A) | 1 | |
| 11 | 316-172 | WASHER (S) | 1 | |
| 12 | 316-171 | STOPPER | 1 | |
| 13 | 321-666 | SPINDLE (D) | 1 | |
| 14 | 321-667 | IDLE GEAR SET (2 PCS.) | 2 | |
| 15 | 319-914 | NEEDLE ROLLER | 2 | |
| 16 | 320-877 | RING GEAR (C) | 1 | |
| 17 | 319-911 | WASHER (E) | 1 | |
| 18 | 690-1VV | BALL BEARING 6901VVCMP2L | 1 | |
| 19 | 319-909 | DAMPER | 2 | |
| 20 | 321-664 | INNER COVER (A) | 1 | |
| 21 | 360-702 | ARMATURE ASS'Y (W/BALL BEARING) DC 9.6V | 1 | |
| 22 | 322-719 | SIDE YOKE | 1 | |
| 23 | 322-723 | MAGNET (E) | 1 | |
| 24 | 322-720 | DUST GUARD FIN (B) | 1 | |
| 25 | 321-662 | BRUSH BLOCK | 1 | |
| 26 | 999-054 | CARBON BRUSH 5X6X11.5 (1 PAIR) | 2 | |
| 27 | 319-918 | BRUSH CAP | 2 | |
| 28 | 302-086 | TAPPING SCREW (W/FLANGE) D4X20 (BLACK) | 7 | |
| 29 | | NAME PLATE | 1 | |
| 30 | 324-287 | HOUSING (A). (B) SET | 1 | |
| 31 | 994-532 | MACHINE SCREW (W/SP. WASHER) M3X5 | 2 | |
| 32 | 319-906 | DC-SPEED CONTROL SWITCH | 1 | |
| 33 | 321-661 | PUSHING BUTTON (A) | 1 | |
| 34 | 324-285 | HITACHI PLATE | 1 | |
| * 35 | | CAUTION PLATE (A) | 1 | FOR USA, CAN |
| 36 | 321-918 | HOOK ASS'Y (W/LIGHT) | 1 | INCLUD. 37, 38 |
| 37 | 321-672 | TAPPING SCREW D2X6 | 2 | |
| 38 | 320-288 | V-LOCK NUT M5 | 1 | |
| 39 | 949-565 | LOCK NUT M4 (10 PCS.) | 1 | |
| 40 | 306-952 | STRAP (BLACK) | 1 | |
| 41 | 322-718 | SLEEVE (A) | 1 | |
| 42 | 324-278 | MACHINE SCREW (W/WASHERS) M4X25 (BLACK) | 1 | |
| 43 | 319-926 | HOOK SPRING | 1 | |
| 44 | 319-927 | SPECIAL SCREW M5 | 1 | |
| * 45 | 318-368 | BATTERY EB 930H (W/ENGLISH N.P.) | 2 | |
| * 45 | 323-225 | BATTERY EB 926H (W/ENGLISH N.P.) | 2 | |
| * 45 | 310-377 | BATTERY EB 9B (W/ENGLISH N.P.) | 2 | |
| * 45 | 310-451 | BATTERY EB 9B (W/ENGLISH N.P.) | 2 | FOR USA, CAN |
| * 45 | 324-288 | BATTERY EB 9B (W/ENGLISH N.P.) | 2 | FOR TPE |
| | | | | |
| | | | | |

