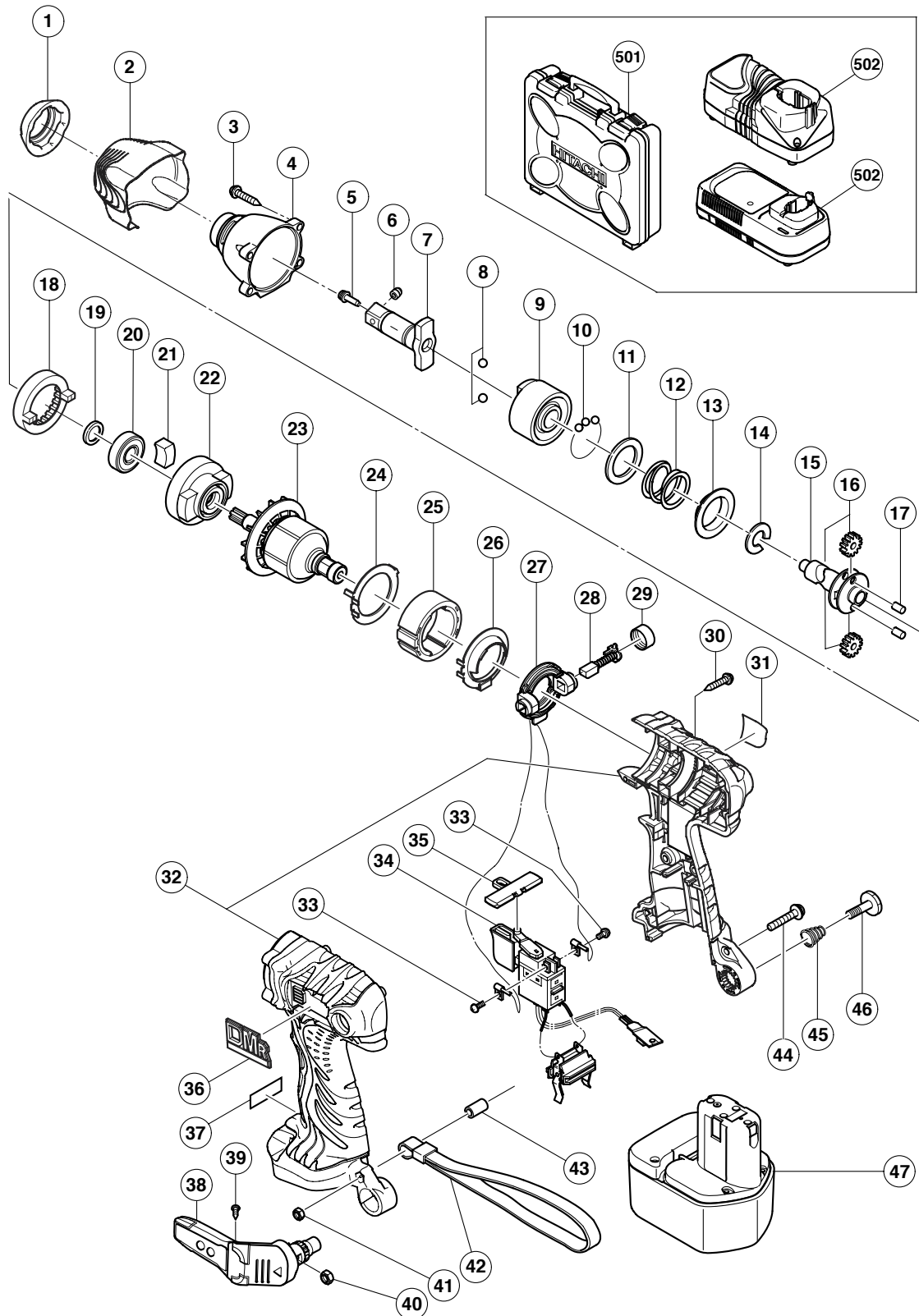


ELECTRIC TOOL PARTS LIST

CORDLESS IMPACT WRENCH Model WR 12DMR

2005 · 4 · 1

(E1)



PARTS

WR 12DMR

ITEM NO.	CODE NO.	DESCRIPTION	NO. USED	REMARKS
1	322-727	FRONT CAP (B)	1	
2	322-728	PROTECTOR (C)	1	
3	319-917	TAPPING SCREW (W/SP. WASHER) D4X25 (BLACK)	4	
4	322-172	HAMMER CASE	1	
* 5	323-542	PIN RETAINER (A)	1	
* 6	323-541	PLUNGER (A)	1	
* 7	322-173	ANVIL (R) ASS'Y	1	INCLUD. 5, 6 TYPE FOR W/PLUNGER (A), PIN RETAINER (A)
* 7	322-732	ANVIL (U)	1	TYPE FOR W/O PLUNGER (A), PIN RETAINER (A)
8	959-154	STEEL BALL D5.556 (10 PCS.)	2	
9	321-656	HAMMER (D)	1	
10	959-148	STEEL BALL D3.175 (10 PCS.)	28	
11	315-978	WASHER (J)	1	
12	321-660	HAMMER SPRING (D)	1	
13	316-172	WASHER (S)	1	
14	316-171	STOPPER	1	
15	321-666	SPINDLE (D)	1	
16	321-667	IDLE GEAR SET (2 PCS.)	2	
17	319-914	NEEDLE ROLLER	2	
18	320-877	RING GEAR (C)	1	
19	319-911	WASHER (E)	1	
20	690-1VV	BALL BEARING 6901VVCMP2L	1	
21	319-909	DAMPER	2	
22	321-664	INNER COVER (A)	1	
23	360-641	ARMATURE ASS'Y DC 12V	1	
24	322-719	SIDE YOKE	1	
25	322-723	MAGNET (E)	1	
26	322-720	DUST GUARD FIN (B)	1	
27	321-662	BRUSH BLOCK	1	
28	999-054	CARBON BRUSH 5X6X11.5 (1 PAIR)	2	
29	319-918	BRUSH CAP	2	
30	302-086	TAPPING SCREW (W/FLANGE) D4X20 (BLACK)	7	
31		NAME PLATE	1	
32	324-282	HOUSING (A). (B) SET	1	
33	994-532	MACHINE SCREW (W/SP. WASHER) M3X5	2	
34	319-906	DC-SPEED CONTROL SWITCH	1	
35	321-661	PUSHING BUTTON (A)	1	
36	324-280	HITACHI PLATE	1	
* 37		CAUTION PLATE (A)	1	FOR USA, CAN
38	321-918	HOOK ASS'Y (W/LIGHT)	1	INCLUD. 39, 40
39	321-672	TAPPING SCREW D2X6	2	
40	320-288	V-LOCK NUT M5	1	
41	949-565	LOCK NUT M4 (10 PCS.)	1	
42	306-952	STRAP (BLACK)	1	
43	322-718	SLEEVE (A)	1	
44	324-278	MACHINE SCREW (W/WASHERS) M4X25 (BLACK)	1	
45	319-926	HOOK SPRING	1	
46	319-927	SPECIAL SCREW M5	1	
* 47	320-388	BATTERY EB 1230HL (W/ENGLISH N.P.)	2	
* 47	323-226	BATTERY EB 1226HL (W/ENGLISH N.P.)	2	
* 47	320-387	BATTERY EB 1220BL (W/ENGLISH N.P.)	2	

PARTS

ITEM NO.	CODE NO.	DESCRIPTION	NO. USED	REMARKS
* 47	320-386	BATTERY EB 1220BL (W/ENGLISH N.P.)	2	FOR USA, CAN
* 47	324-279	BATTERY EB 1220BL (W/ENGLISH N.P.)	2	FOR TPE

STANDARD ACCESSORIES

ITEM NO.	CODE NO.	DESCRIPTION	NO. USED	REMARKS
501	322-070	CASE	1	
* 502		CHARGER (MODEL UC 14YFA)	1	
* 502		CHARGER (MODEL UC 18YG)	1	

OPTIONAL ACCESSORIES

ITEM NO.	CODE NO.	DESCRIPTION	NO. USED	REMARKS
* 601	310-378	BATTERY EB 12B (W/ENGLISH N.P.)	1	
* 601	310-452	BATTERY EB 12B (W/ENGLISH N.P.)	1	FOR NZL, AUS
* 601	310-453	BATTERY EB 12B (W/ENGLISH N.P.)	1	FOR USA, CAN
602		CORNER ATTACHMENT ASS'Y	1	INCLUD. 603-619
603	955-300	HOUSING	1	
604	955-301	METAL	3	
605	955-302	SPINDLE	1	
606		HITACHI LABEL	1	
607	955-303	BEARING RACE	2	
608	955-304	NEEDLE THRUST BEARING (NTA-1413)	2	
609	955-305	COVER	1	
610	955-306	NEEDLE BEARING (NTN BK1012)	1	
611	948-227	RETAINING RING FOR D47 HOLE	1	
612	955-307	PINION	1	
613	955-308	SLEEVE	1	
614	955-309	WASHER	1	
615	955-310	SOCKET COVER	1	
616	955-311	SOCKET	1	
617	303-247	SEAL LOCK HEX. SOCKET HD. BOLT M5X25	6	
618	873-537	SOCKET PIN	1	
619	873-187	O-RING (J1SW1516)	1	
620	991-481	FORM TIE SOCKET ASS'Y 11.3MMX95L	1	INCLUD. 618, 619
621	992-610	UNIVERSAL JOINT ASS'Y	1	INCLUD. 618, 619
622	955-153	UNIVERSAL JOINT PIN	1	
623	991-476	BIT ADAPTER ASS'Y	1	INCLUD. 618, 619
624	944-291	HEX. SOCKET ASS'Y 10MMX40L	1	INCLUD. 618, 619
625	873-632	HEX. SOCKET ASS'Y 12MMX40L	1	INCLUD. 618, 619
626	873-539	HEX. SOCKET ASS'Y 13MMX40L	1	INCLUD. 618, 619
627	873-540	HEX. SOCKET ASS'Y 14MMX40L	1	INCLUD. 618, 619
628	873-536	HEX. SOCKET ASS'Y 17MMX32L	1	INCLUD. 618, 619
629	873-624	HEX. SOCKET ASS'Y 19MMX34L	1	INCLUD. 618, 619

