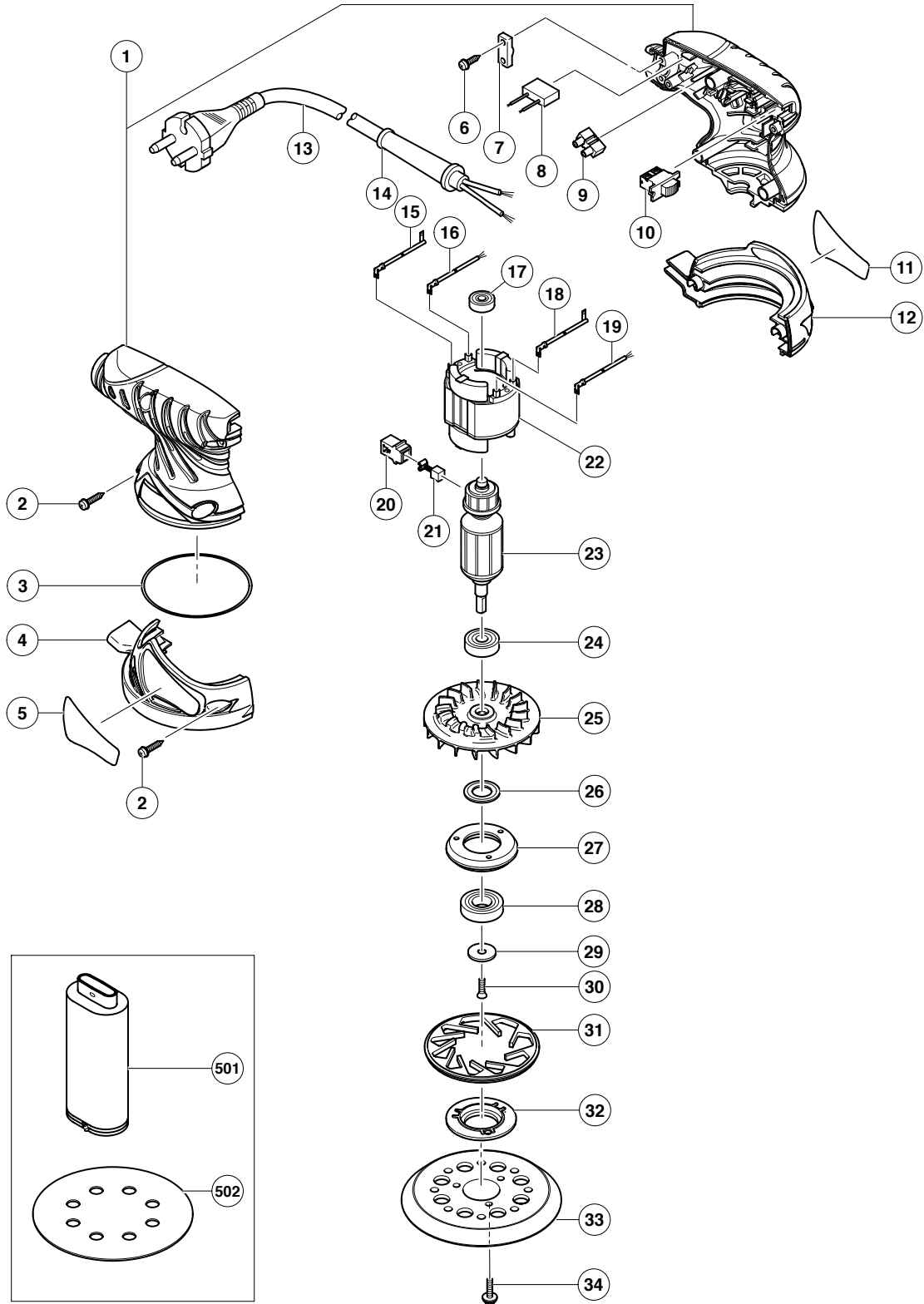


ELECTRIC TOOL PARTS LIST

RANDOM ORBIT SANDER
Model SV 13YB

2005 · 6 · 1
(E1)



PARTS

SV 13YB

ITEM NO.	CODE NO.	DESCRIPTION	NO. USED	REMARKS
1	324-214	HOUSING (A).(B) SET	1	
2	301-653	TAPPING SCREW (W/FLANGE) D4X20 (BLACK)	7	
3	993-195	O-RING	1	
4	324-207	LOWER COVER (B)	1	
5		NAME PLATE	1	
6	984-750	TAPPING SCREW (W/FLANGE) D4X16	2	
7	937-631	CORD CLIP	1	
*	8	930-039	NOISE SUPPRESSOR	1 FOR AUS, NZL, GBR, EUROPE, FIN, NOR, SWE, DEN, CHN
	9	938-307	PILLAR TERMINAL	1
	10	311-948	SLIDE SWITCH (1P SCREW TYPE)	1
	11		HITACHI LABEL	1
	12	324-206	LOWER COVER (A)	1
*	13	500-409Z	CORD	1 (CORD ARMOR D8.8)
*	13	500-468Z	CORD	1 (CORD ARMOR D8.8) FOR THA, CHN
*	13	500-240Z	CORD	1 (CORD ARMOR D8.8) FOR USA, CAN
*	13	500-423Z	CORD	1 (CORD ARMOR D8.8) FOR SIN
*	13	500-439Z	CORD	1 (CORD ARMOR D8.8) FOR AUS, NZL
*	13	500-461Z	CORD	1 (CORD ARMOR D8.8) FOR GBR
	14	953-327	CORD ARMOR D8.8	1
	15	322-764	INTERNAL WIRE (BROWN)	1
	16	322-761	TAB TERMINAL (BLUE)	1
	17	626-VVM	BALL BEARING 626VVC2PS2L	1
	18	322-763	INTERNAL WIRE (BLUE)	1
	19	322-762	TAB TERMINAL (BROWN)	1
	20	930-483	BRUSH HOLDER	2
	21	999-041	CARBON BRUSH (1 PAIR)	2
*	22	340-618C	STATOR 110V	1
*	22	340-618D	STATOR 120V	1
*	22	340-618E	STATOR 220V-230V	1
*	22	340-618F	STATOR 240V	1
*	23	360-698C	ARMATURE 110V	1
*	23	360-698U	ARMATURE ASS'Y 120V	1 INCLUD. 17, 24
*	23	360-698E	ARMATURE 220V-230V	1
*	23	360-698F	ARMATURE 240V	1
	24	629-VVM	BALL BEARING 629VVC2PS2L	1
	25	324-521	BALANCE FAN	1
	26	324-208	DUST WASHER	1
	27	324-212	BEARING HOLDER	1
	28	600-2DW	BALL BEARING 6002DDWCMP2L	1
	29	309-422	WASHER	1
	30	993-244	SEAL LOCK FLAT HD. SCREW M4X12	1
	31	324-210	BRAKE	1
	32	324-211	BEARING COVER	1
	33	324-209	PAD (PRESSURE SENSITIVE TYPE)	1
	34	307-109	SEAL LOCK SCREW (W/WASHERS) M4X16 (BLACK)	3

