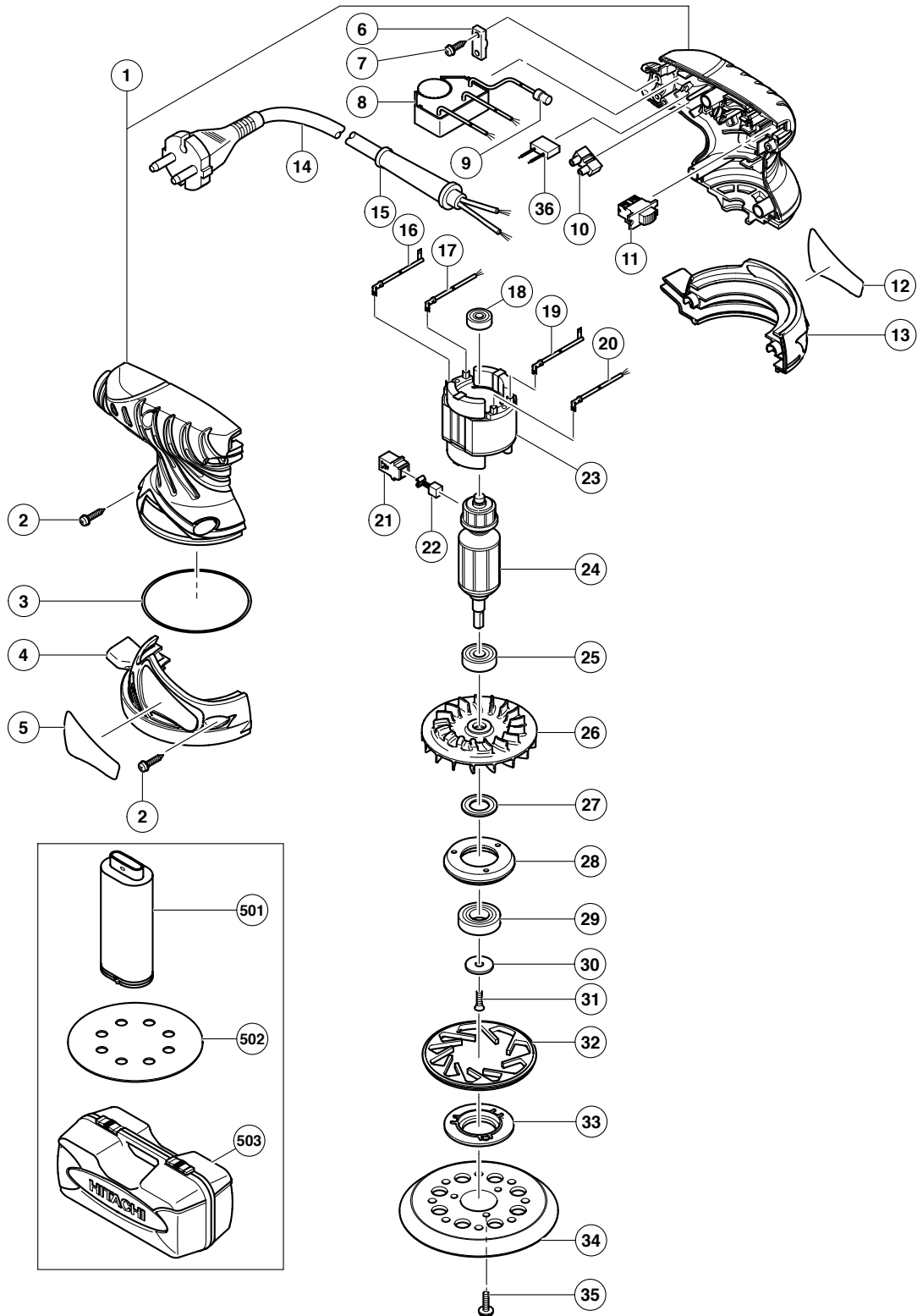


ELECTRIC TOOL PARTS LIST

RANDOM ORBIT SANDER
Model SV 13YA

2005 · 6 · 15
(E1)



PARTS

SV 13YA

ITEM NO.	CODE NO.	DESCRIPTION	NO. USED	REMARKS
1	324-249	HOUSING (A).(B) SET	1	
2	301-653	TAPPING SCREW (W/FLANGE) D4X20 (BLACK)	7	
3	993-195	O-RING	1	
4	324-207	LOWER COVER (B)	1	
5		NAME PLATE	1	
6	937-631	CORD CLIP	1	
7	984-750	TAPPING SCREW (W/FLANGE) D4X16	2	
*	8	324-245	1	FOR GBR (110V)
*	8	324-246	1	FOR USA, CAN
*	8	324-248	1	FOR CHN
*	8	324-244	1	
*	8	324-247	1	FOR AUS
	9	959-140	1	CONNECTOR 50091 (10 PCS.)
	10	938-307	1	PILLAR TERMINAL
	11	311-948	1	SLIDE SWITCH (1P SCREW TYPE)
	12		1	HITACHI LABEL
	13	324-206	1	LOWER COVER (A)
*	14	500-409Z	1	(CORD ARMOR D8.8)
*	14	500-461Z	1	(CORD ARMOR D8.8) FOR GBR (110V)
*	14	500-435Z	1	(CORD ARMOR D8.8) FOR GBR (230V)
*	14	500-447Z	1	(CORD ARMOR D8.8) FOR SUI
*	14	500-240Z	1	(CORD ARMOR D8.8) FOR USA, CAN
*	14	500-439Z	1	(CORD ARMOR D8.8) FOR AUS, NZL
*	14	500-468Z	1	(CORD ARMOR D8.8) FOR CHN
	15	953-327	1	CORD ARMOR D8.8
	16	322-764	1	INTERNAL WIRE (BROWN)
	17	322-761	1	TAB TERMINAL (BLUE)
	18	626-VVM	1	BALL BEARING 626VVC2PS2L
	19	322-763	1	INTERNAL WIRE (BLUE)
	20	322-762	1	TAB TERMINAL (BROWN)
	21	930-483	2	BRUSH HOLDER
	22	999-041	2	CARBON BRUSH (1 PAIR)
*	23	340-616C	1	STATOR 110V
*	23	340-616D	1	STATOR 120V
*	23	340-616E	1	STATOR 220V-230V
*	23	340-616F	1	STATOR 240V
*	24	360-696C	1	ARMATURE 110V
	24	360-696U	1	ARMATURE ASS'Y 120V INCLUD. 17, 24
*	24	360-696E	1	ARMATURE 220V-230V
*	24	360-696F	1	ARMATURE 240V
	25	629-VVM	1	BALL BEARING 629VVC2PS2L
	26	324-521	1	BALANCE FAN
	27	324-208	1	DUST WASHER
	28	324-212	1	BEARING HOLDER
	29	600-2DW	1	BALL BEARING 6002DDWCMPS2L
	30	309-422	1	WASHER
	31	993-244	1	SEAL LOCK FLAT HD. SCREW M4X12
	32	324-210	1	BRAKE
	33	324-211	1	BEARING COVER
	34	324-209	1	PAD (PRESSURE SENSITIVE TYPE)
	35	307-109	3	SEAL LOCK SCREW (W/WASHERS) M4X16 (BLACK)

