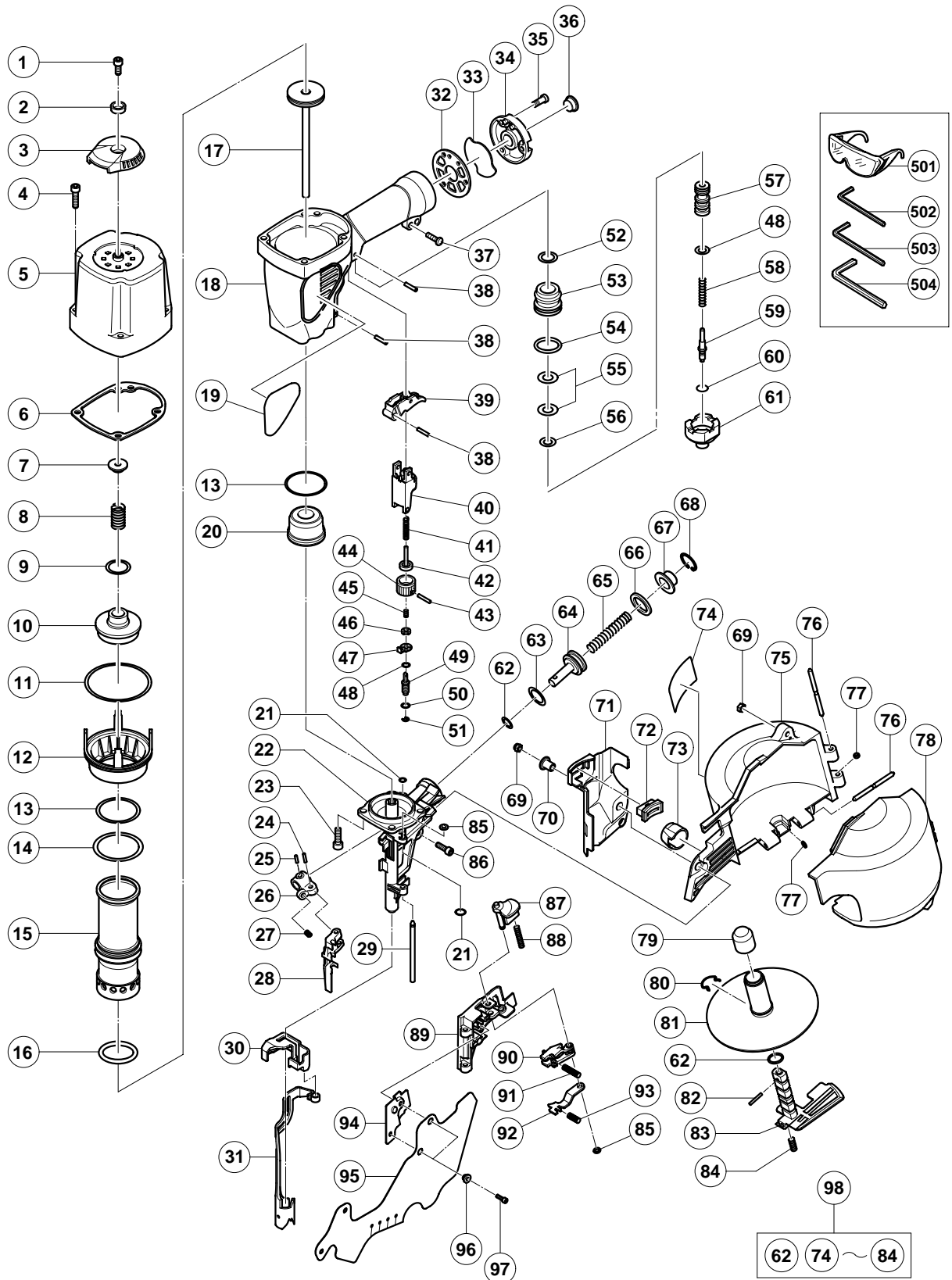


PNEUMATIC TOOL PARTS LIST

■ COIL NAILER
Model NV 75AG

2002 • 8 • 30
(E1)



PARTS

NV 75AG

ITEM NO.	CODE NO.	DESCRIPTION	NO. USED	REMARKS
1	949-657	HEX. SOCKET HD. BOLT M6X12 (10 PCS.)	1	
2	880-515	PLATE	1	
3	880-514	TOP COVER	1	
4	949-822	HEX. SOCKET HD. BOLT M5X35 (10 PCS.)	4	
5	883-451	EXHAUST COVER	1	
6	883-452	GASKET (B)	1	
7	882-914	HEAD BUMPER	1	
8	882-913	HEAD VALVE SPRING	1	
9	876-796	O-RING (P-22)	1	
10	882-912	HEAD VALVE (A)	1	
11	878-863	O-RING (S-70)	1	
12	882-910	CYLINDER PLATE	1	
13	882-874	O-RING (S-46)	2	
14	877-368	O-RING (1AP-48)	1	
15	883-989	CYLINDER	1	
16	883-431	O-RING (I.D 37)	1	
17	883-980	PISTON (H)	1	
18	883-988	BODY	1	
19		NAME PLATE	1	
20	883-432	PISTON BUMPER	1	
21	874-436	O-RING (P-4)	2	
22	883-981	NOSE	1	
23	880-675	NYLOCK HIGH TENSION BOLT M6X20	4	
24	883-093	PLUNGER (B)	1	
25	949-497	ROLL PIN D4X16 (10 PCS.)	1	
26	883-144	FEEDER ARM (B)	1	
27	883-143	FEEDER SPRING	1	
28	883-092	FEEDER	1	
29	883-091	NAIL GUIDE SHAFT	1	
30	882-900	PUSHING LEVER COVER (B)	1	
31	883-852	PUSHING LEVER (A)	1	
32	883-678	GASKET (B)	1	
33	883-679	DUST FILTER	1	
34	881-949	CAP	1	
35	949-821	HEX. SOCKET HD. BOLT M5X16 (10 PCS.)	3	
36	872-035	DUST CAP	1	
37	880-881	MACHINE SCREW (W/WASHERS) M5X30 (BLACK)	1	
38	949-865	ROLL PIN D3X28 (10 PCS.)	3	
39	883-990	TRIGGER	1	
40	882-885	PUSHING LEVER GUIDE	1	
41	882-892	PUSHING LEVER SPRING	1	
42	882-891	PUSHING LEVER (C)	1	
43	880-093	ROLL PIN D2X16	1	
44	883-982	ADJUSTER	1	
45	882-890	ADJUSTER SPRING	1	
46	882-887	ADJUSTER PLATE (B)	1	
47	882-886	ADJUSTER PLATE (A)	1	
48	981-317	O-RING (S-4)	2	
49	882-888	PUSHING LEVER (B)	1	
50	872-822	O-RING (S-5)	1	
51	872-971	RETAINING RING (E-TYPE) FOR D3 SHAFT	1	

PARTS

NV 75AG

ITEM NO.	CODE NO.	DESCRIPTION	NO. USED	REMARKS
52	877-699	HEAD VALVE O-RING (I.D 16.8)	1	
53	878-881	VALVE BUSHING (B)	1	
54	878-885	O-RING (S-18)	1	
55	878-925	O-RING (I.D 8.8)	2	
56	878-887	O-RING (I.D 11)	1	
57	880-672	VALVE PISTON (B)	1	
58	878-884	PLUNGER SPRING	1	
59	880-673	PLUNGER (A)	1	
60	878-888	O-RING (I.D 1.8)	1	
61	880-671	VALVE BUSHING (A)	1	(Since Oct. 03, Use 882920)
62	872-645	O-RING (P-9)	2	
63	880-330	O-RING (P-21)	1	
64	883-300	FEED PISTON	1	
65	882-883	FEED SPRING	1	
66	877-711	BUMPER	1	
67	880-331	FEED PISTON COVER	1	
68	939-555	RETAINING RING FOR D28 HOLE (10 PCS.)	1	
69	877-371	NYLON NUT M5	2	
70	882-907	SLEEVE	1	
71	883-853	PUSHING LEVER COVER (A)	1	
72	882-901	PROTECTOR (B)	1	
73	883-106	NOSE CAP (A)	1	
74	878-184	WARNING LABEL	1	
75	883-984	MAGAZINE (A)	1	
76	883-111	PIN	2	
77	877-826	FEEDER SHAFT RING	2	
78	883-985	MAGAZINE COVER (A)	1	
79	883-987	HOLDER CAP (A)	1	
80	880-398	RATCHET SPRING	1	
81	880-503	NAIL HOLDER	1	
82	878-791	ROLL PIN D2.5X12	1	
83	883-986	HOLDER SHAFT (A)	1	
84	881-826	SPRING	1	
85	880-319	SHAFT RING	2	
86	949-757	HEX. SOCKET HD. BOLT M5X20 (10 PCS.)	1	
87	880-318	GUIDE LOCK	1	
88	880-446	SPRING	1	
89	883-392	NAIL GUIDE	1	
90	883-085	NAIL STOPPER (A)	1	
91	883-088	STOPPER SPRING (A)	1	
92	883-086	NAIL STOPPER (B)	1	
93	883-087	STOPPER SPRING (B)	1	
94	883-089	NAIL GUIDE COVER	1	
95	883-393	COVER	1	
96	882-881	SLEEVE (B)	2	
97	880-630	NYLOCK HEX. SOCKET HD. BOLT M4X12	2	
98	883-983	MAGAZINE ASS'Y	1	INCLUD.62,74-84

