

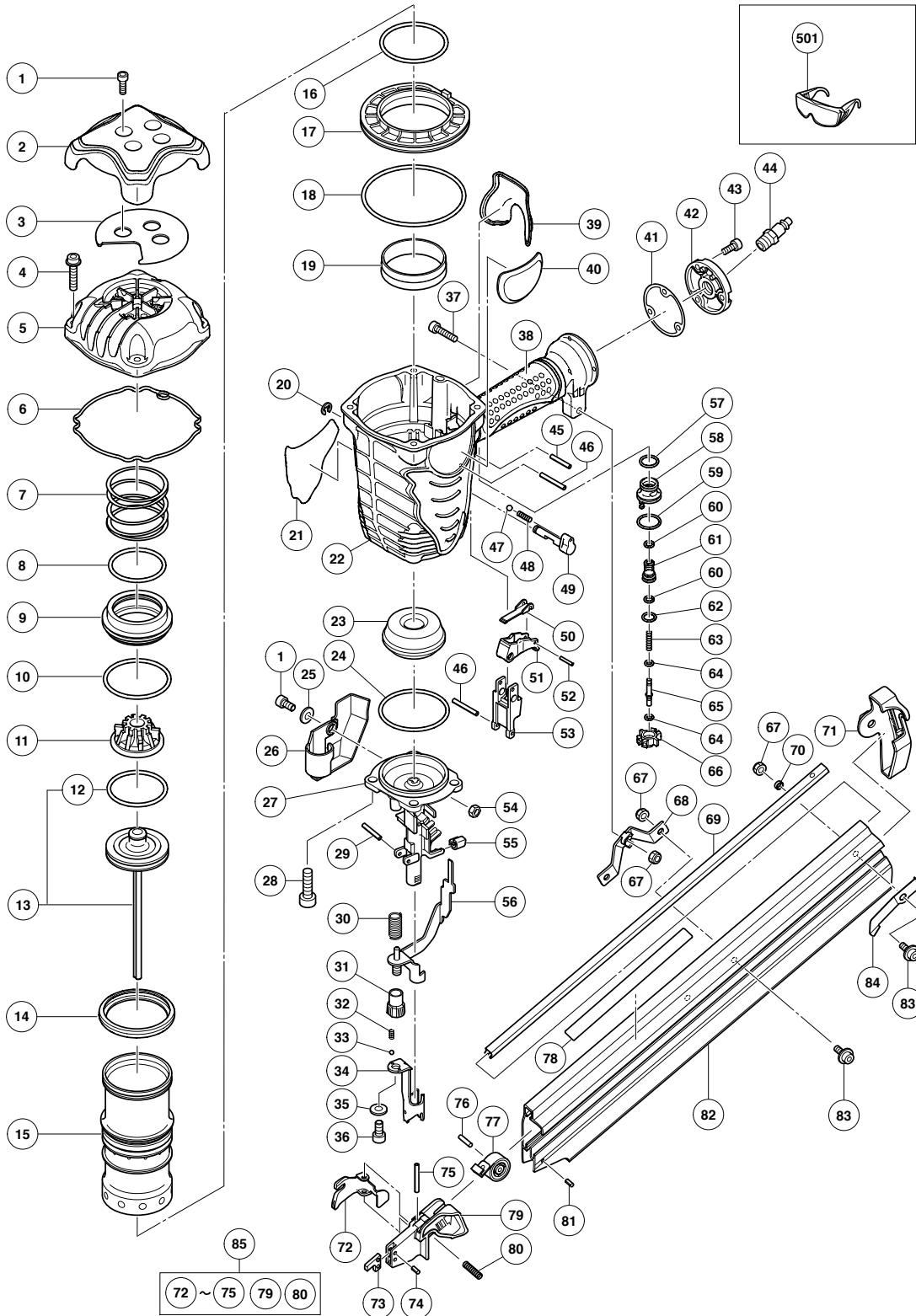
PNEUMATIC TOOL PARTS LIST

STRIP NAILER

2007 · 10 · 22

Model NR 90AF

(E1)



PARTS

NR 90AF

ITEM NO.	CODE NO.	DESCRIPTION	NO. USED	REMARKS
1	949-665	HEX. SOCKET HD. BOLT M5X14 (10 PCS.)	5	
2	884-952	HEAD GUARD	1	
3	884-986	SHEET	1	
4	878-877	HEX. SOCKET HD. BOLT (W/FLANGE) M6X30	4	
5	886-261	EXHAUST COVER	1	
6	884-953	GASKET (A)	1	
7	884-949	HEAD VALVE SPRING	1	
8	884-947	O-RING (I.D 49.4)	1	
9	884-946	HEAD VALVE	1	
10	884-948	O-RING (I.D 59.4)	1	
11	884-950	EXHAUST VALVE RUBBER	1	
12	884-958	PISTON O-RING	1	
13	886-262	PISTON ASS'Y	1	INCLUD. 12
14	884-945	VALVE RUBBER	1	
15	884-941	CYLINDER	1	
16	884-942	O-RING (I.D 59.6)	1	
17	884-944	CYLINDER PLATE	1	
18	884-943	O-RING (I.D 94.6)	1	
19	877-317	CYLINDER RING	1	
20	955-479	RETAINING RING (E-TYPE) FOR D6 SHAFT	1	
21		NAME PLATE	1	
22	886-259	BODY ASS'Y	1	INCLUD. 38, 39
23	884-959	PISTON BUMPER	1	
24	884-989	O-RING (I.D 60)	1	
25	876-205	WASHER	1	
26	886-269	PUSHING LEVER COVER	1	
27	886-264	NOSE	1	
28	306-437	NYLOCK HEX. SOCKET HD. BOLT M8X30	4	
29	949-518	ROLL PIN D3X18 (10 PCS.)	1	
30	886-263	PUSHING LEVER SPRING	1	
31	326-799	ADJUSTER	1	
32	886-281	ADJUSTER SPRING	2	
33	959-148	STEEL BALL D3.175 (10 PCS.)	2	
34	886-267	PUSHING LEVER (A)	1	
35	886-282	WASHER	1	
36	949-657	HEX. SOCKET HD. BOLT M6X12 (10 PCS.)	1	
37	949-670	HEX. SOCKET HD. BOLT M6X22 (10 PCS.)	1	
38		GRIP RUBBER (A)	1	SUPPLIED WITH ITEM NO. 601, 602
39		GRIP RUBBER (B)	1	
40	886-356	HITACHI PLATE	1	
41	884-342	GASKET (B)	1	
42	881-949	CAP	1	
43	949-821	HEX. SOCKET HD. BOLT M5X16 (10 PCS.)	3	
44		AIR PLUG NPT 3/8	1	
45	949-539	ROLL PIN D3X25 (10 PCS.)	1	
46	884-975	ROLL PIN D3X32	2	
47	959-155	STEEL BALL D3.97 (10 PCS.)	1	
48	982-454	SPRING (C)	1	
49	886-265	CHANGE KNOB (C)	1	
50	885-689	TRIGGER ARM (C)	1	
51	885-657	TRIGGER (C) ASS'Y	1	INCLUD. 50, 52

