

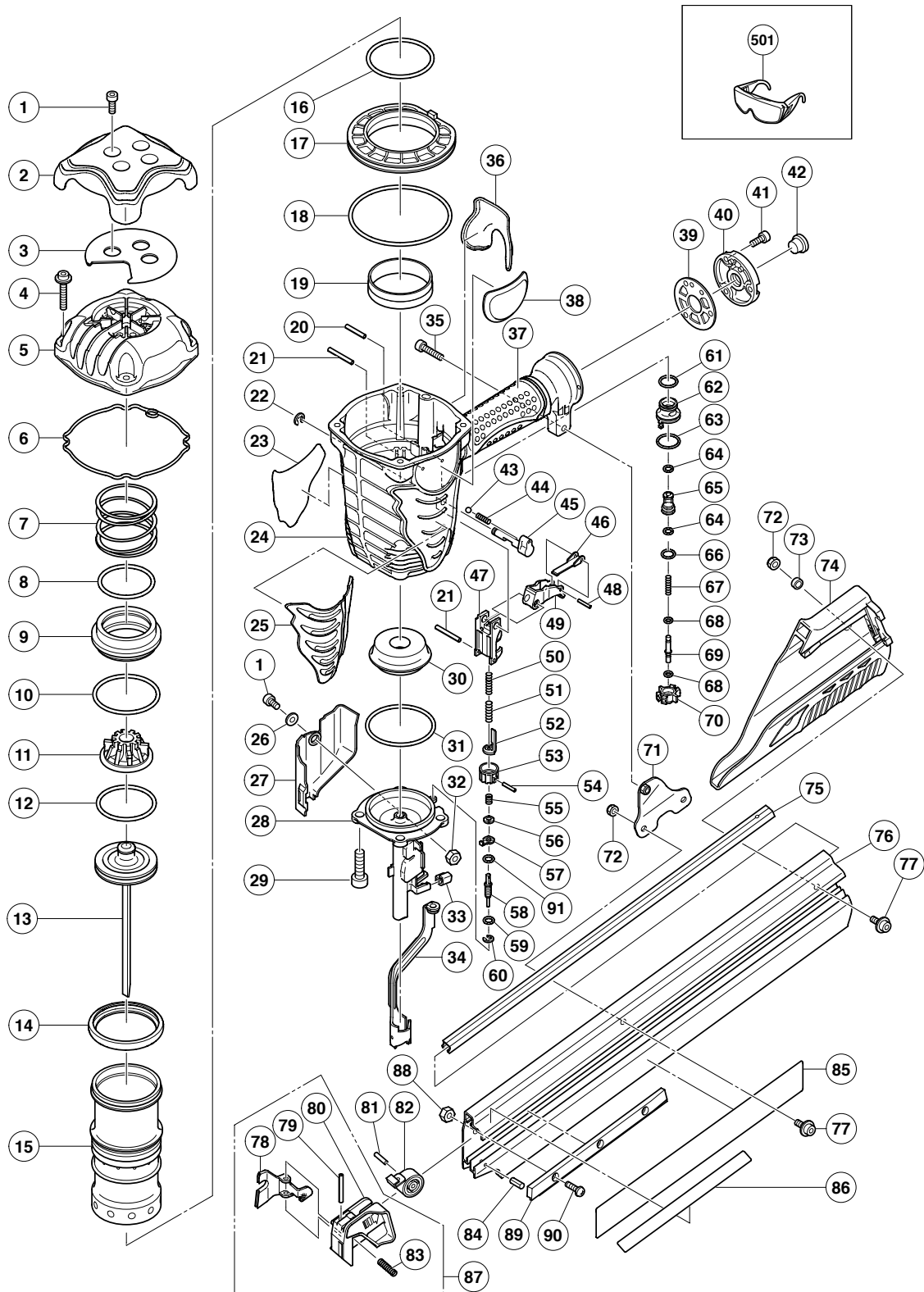
PNEUMATIC TOOL PARTS LIST

STRIP NAILER

2005 · 12 · 5

Model NR 90AE

(E2)



PARTS

NR 90AE

| ITEM NO. | CODE NO. | DESCRIPTION | NO. USED | REMARKS |
|----------|----------|---------------------------------------|----------|---------------------------------|
| 1 | 949-665 | HEX. SOCKET HD. BOLT M5X14 (10 PCS.) | 5 | |
| 2 | 884-952 | HEAD GUARD | 1 | |
| 3 | 884-986 | SHEET | 1 | |
| 4 | 878-877 | HEX. SOCKET HD. BOLT (W/FLANGE) M6X30 | 4 | |
| 5 | 884-951 | EXHAUST COVER | 1 | |
| 6 | 884-953 | GASKET (A) | 1 | |
| 7 | 884-949 | HEAD VALVE SPRING | 1 | |
| 8 | 884-947 | O-RING (I.D 49.4) | 1 | |
| 9 | 884-946 | HEAD VALVE | 1 | |
| 10 | 884-948 | O-RING (I.D 59.4) | 1 | |
| 11 | 884-950 | EXHAUST VALVE RUBBER | 1 | |
| 12 | 884-958 | PISTON O-RING | 1 | |
| 13 | 885-519 | PISTON | 1 | |
| 14 | 884-945 | VALVE RUBBER | 1 | |
| 15A | 884-941 | CYLINDER | 1 | |
| 16 | 884-942 | O-RING (I.D 59.6) | 1 | |
| 17 | 884-944 | CYLINDER PLATE | 1 | |
| 18 | 884-943 | O-RING (I.D 94.6) | 1 | |
| 19 | 877-317 | CYLINDER RING | 1 | |
| 20 | 949-539 | ROLL PIN D3X25 (10 PCS.) | 1 | |
| 21 | 884-975 | ROLL PIN D3X32 | 2 | |
| 22 | 955-479 | RETAINING RING (E-TYPE) FOR D6 SHAFT | 1 | |
| 23 | | NAME PLATE | 1 | |
| 24 | 884-940 | BODY ASS'Y | 1 | INCLUD. 36, 37 |
| 25 | 884-956 | PROTECTOR | 1 | |
| 26 | 876-205 | WASHER | 1 | |
| 27 | 884-976 | PUSHING LEVER COVER (A) | 1 | |
| 28 | 885-521 | NOSE | 1 | |
| 29 | 306-437 | NYLOCK HEX. SOCKET HD. BOLT M8X30 | 4 | |
| 30 | 884-959 | PISTON BUMPER | 1 | |
| 31 | 884-989 | O-RING (I.D 60) | 1 | |
| 32 | 877-371 | NYLON NUT M5 | 1 | |
| 33 | 884-985 | NOSE RUBBER | 2 | |
| 34 | 884-970 | PUSHING LEVER (A) | 1 | |
| 35 | 949-670 | HEX. SOCKET HD. BOLT M6X22 (10 PCS.) | 1 | |
| 36 | 884-987 | GRIP RUBBER (B) | 1 | |
| 37 | | GRIP RUBBER (A) | 1 | SUPPLIED WITH ITEM NO. 601, 602 |
| 38 | | HITACHI LABEL | 1 | |
| 39 | 883-678 | GASKET (B) | 1 | |
| 40 | 884-954 | CAP | 1 | |
| 41 | 949-821 | HEX. SOCKET HD. BOLT M5X16 (10 PCS.) | 3 | |
| 42 | 872-035 | DUST CAP | 1 | |
| 43 | 959-155 | STEEL BALL D3.97 (10 PCS.) | 1 | |
| 44 | 982-454 | SPRING (C) | 1 | |
| 45 | 884-968 | CHANGE KNOB (C) | 1 | |
| 46 | 884-988 | TRIGGER ARM (C) | 1 | |
| 47 | 884-969 | PUSHING LEVER GUIDE | 1 | |
| 48 | 881-951 | ROLL PIN D2.5X16 | 1 | |
| 49 | 884-967 | TRIGGER (C) | 1 | INCLUD. 46, 48 |
| 50 | 883-302 | PUSHING LEVER SPRING (B) | 1 | |
| 51 | 883-305 | PUSHING LEVER SPRING (A) | 1 | |

