

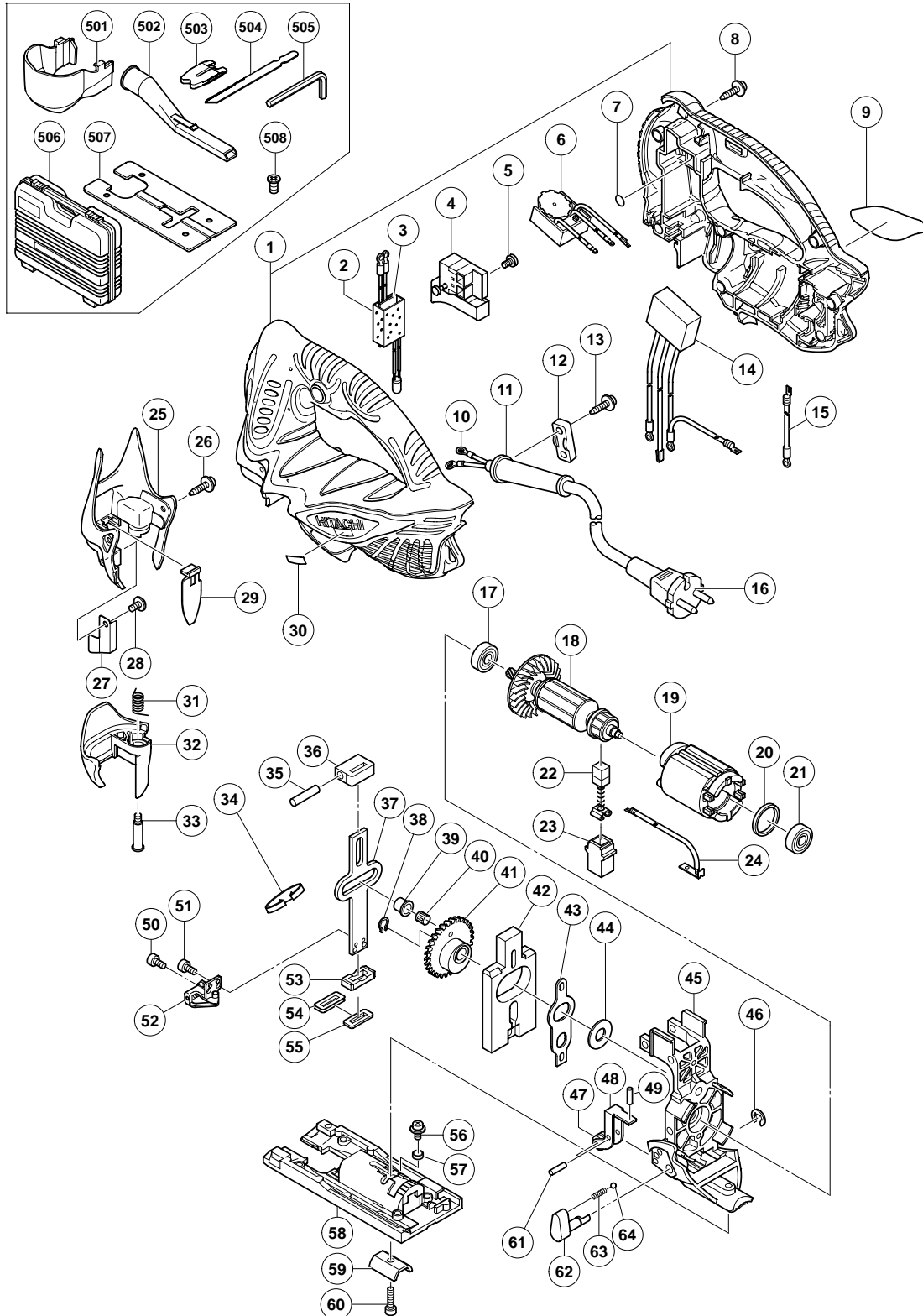
## ELECTRIC TOOL PARTS LIST

■ JIG SAW

2005 • 10 • 14

Model CJ 110MV

(E1)



**PARTS**

CJ 110MV

ITEM NO.	CODE NO.	DESCRIPTION	NO. USED	REMARKS
1	325-097	HOUSING (A).(B) SET	1	
2	930-153	SUPPORT (B)	1	
* 3	325-091	PRINTED CIRCUIT BOARD (LED LIGHT)	1	
* 3	325-084	PRINTED CIRCUIT BOARD (LED LIGHT)	1	FOR TPE, GBR (110V), USA, CAN
4	325-085	SWITCH (E) (1P SCREW TYPE) W/LOCK	1	INCLUD. 5
5	305-499	MACHINE SCREW (W/WASHER) M3.5X6	4	
* 6	325-087	CONTROLLER 100V-110V	1	
* 6	325-093	CONTROLLER 120V	1	
* 6	325-094	CONTROLLER 220V-240V	1	
7	984-528	O-RING (P-6)	4	
8	301-653	TAPPING SCREW (W/FLANGE) D4X20 (BLACK)	7	
9		NAME PLATE	1	
10	980-063	TERMINAL	2	
* 11	953-327	CORD ARMOR D8.8	1	
* 11	938-051	CORD ARMOR D10.1	1	
12	937-631	CORD CLIP	1	
13	984-750	TAPPING SCREW (W/FLANGE) D4X16	2	
* 14	325-092	NOISE SUPPRESSOR	1	FOR TPE, NZL, AUS, GBR, SAF, EUROPE, FIN, NOR, SWE, DEN, AUT, SUI, CHN
* 15	325-095	INTERNAL WIRE (GRAY) 260L	1	FOR THA, INA, SYR, SIN, HKG, KUW, USA, CAN, IND
* 16	500-234Z	CORD	1	(CORD ARMOR D8.8)
* 16	500-447Z	CORD	1	(CORD ARMOR D8.8) FOR SYR, SUI
* 16	500-455Z	CORD	1	(CORD ARMOR D8.8) FOR THA, CHN
* 16	500-423Z	CORD	1	(CORD ARMOR D8.8) FOR SIN, KUW
* 16	500-247Z	CORD	1	(CORD ARMOR D8.8) FOR FIN, NOR, SWE, DEN
* 16	500-439Z	CORD	1	(CORD ARMOR D8.8) FOR NZL, AUS
* 16	500-240Z	CORD	1	(CORD ARMOR D8.8) FOR USA, CAN
* 16	500-450Z	CORD	1	(CORD ARMOR D8.8) FOR HKG, GBR (230V)
* 16	500-461Z	CORD	1	(CORD ARMOR D8.8) FOR GBR (110V)
* 16	323-974	CORD	1	(CORD ARMOR D10.1) FOR TPE
17	608-VVM	BALL BEARING 608VVC2PS2L	1	
* 18	360-741C	ARMATURE 110V	1	
* 18	360-741U	ARMATURE ASS'Y 120V	1	INCLUD. 17, 21
* 18	360-741E	ARMATURE 220V-230V	1	
* 18	360-741F	ARMATURE 240V	1	
* 19	340-545C	STATOR 110V-120V	1	
* 19	340-545D	STATOR 120V	1	FOR USA, CAN
* 19	340-545E	STATOR 220V-240V	1	
20	323-420	RUBBER RING	1	
21	608-VVM	BALL BEARING 608VVC2PS2L	1	
22	999-041	CARBON BRUSH (1 PAIR)	2	
23	955-203	BRUSH HOLDER	2	
24	325-088	INTERNAL WIRE (BLUE) 50L	2	
25	325-078	FRONT COVER	1	
26	325-083	TAPPING SCREW (W/FLANGE) D4X12 (BLACK)	2	
27	321-592	FENCE	1	
28	325-079	MACHINE SCREW (W/SP. WASHER) M4X8 (BLACK)	1	
29	325-082	LIGHT BAR	1	
30		MODEL NAME PLATE	1	
31	321-580	LEVER SPRING	1	





MODEL NAME	(A) BEFORE CHANGE ( THROUGH NOV. 2005 )					INTER-CHANGEABILITY	(B) AFTER CHANGE ( SINCE DEC. 2005 )					
	ITEM NO.	CODE NO.	PART NAME	UNIT PCS.	*SUPPLY		ITEM NO.	CODE NO.	PART NAME	UNIT PCS.	REMARKS	PRICE (YEN)
CJ110MV	6	325087	CONTROLLER 100V-110V (TILL 11, 2005)	1	C	-X-	6A	326286	CONTROLLER ASS'Y	1	SINCE 12, 2005	1300
	6	325093	CONTROLLER 120V (TILL 11, 2005)	1	C	-X-	6A	326287	CONTROLLER ASS'Y	1	SINCE 12, 2005	1300
	6	325094	CONTROLLER 220V-240V (TILL 11, 2005)	1	C	-X-	6A	326288	CONTROLLER ASS'Y	1	SINCE 12, 2005	1300
	14	325092	NOISE SUPPRESSOR (INCLUD. 65)	1	D	<-	14A	325566	NOISE SUPPRESSOR	1	FOR TPE, NZL, AUS, GBR, SAF, EUROPE, FIN, NOR, SWE, DEN, AUT, SUI, CHN	280
	15	325095	INTERNAL WIRE (GRAY) 260L (TILL 11, 2005) FOR THA, INA, SYR, SIN, HKG, KUW, USA, CAN, IND	1	C							
	18	360741C	ARMATURE 110V (TILL 11, 2005)	1	C	-X-	18A	360764C	ARMATURE 110V	1	SINCE 12, 2005	3800
	18	360741U	ARMATURE ASS'Y 120V (TILL 11, 2005)	1	C	-X-	18A	360764U	ARMATURE ASS'Y 120V	1	SINCE 12, 2005 INCLUD. 17, 21	4400
	18	360741E	ARMATURE 220V-230V (TILL 11, 2005)	1	C	-X-	18A	360764E	ARMATURE 230V	1	SINCE 12, 2005	3800
	18	360741F	ARMATURE 240V (TILL 11, 2005)	1	C	-X-	18A	360764F	ARMATURE 240V	1	SINCE 12, 2005	3800
	19	340545C	STATOR 110V-120V (TILL 11, 2005)	1	C	-X-	19A	340666C	STATOR 110V	1	SINCE 12, 2005	1800
	19	340545D	STATOR 120V (TILL 11, 2005)	1	C	-X-	19A	340666D	STATOR 120V	1	SINCE 12, 2005 FOR USA, CAN	1800
	19	340545E	STATOR 220V-240V (TILL 11, 2005)	1	C	-X-	19A	340666E	STATOR 230V-240V	1	SINCE 12, 2005	1800
	24	325088	INTERNAL WIRE (BLUE) 50L (TILL 11, 2005)	2	C							
							65	959140	CONNECTOR 50091 (10 PCS.)	1	SINCE 12, 2005	120
							66	960356	TERMINAL (A) M3.5 (10 PCS.)	1	FOR TPE, NZL, AUS, GBR, SAF, EUROPE, FIN, NOR, SWE, DEN, SUI, CHN	90
							67	302488	EARTH TERMINAL	1	FOR TPE, NZL, AUS, GBR, SAF, EUROPE, FIN, NOR, SWE, DEN, SUI, CHN	30
							68	311741	TERMINAL	1	FOR TPE, NZL, AUS, GBR, SAF, EUROPE, FIN, NOR, SWE, DEN, SUI, CHN	30
							69	321587	INTERNAL WIRE (GRAY) 260L	1	TILL 11, 2005 FOR TPE, NZL, AUS, GBR, SAF, EUROPE, FIN, NOR, SWE, DEN, SUI, CHN	100
							70	960356	TERMINAL (A) M3.5 (10 PCS.)	1	SINCE 12, 2005 FOR THA, INA, SYR, SIN, HKG, KUW, USA, CAN, IND	90
							71	326297	STATOR SPACER	2	SINCE 12, 2005	50

INTER-CHANGEABILITY

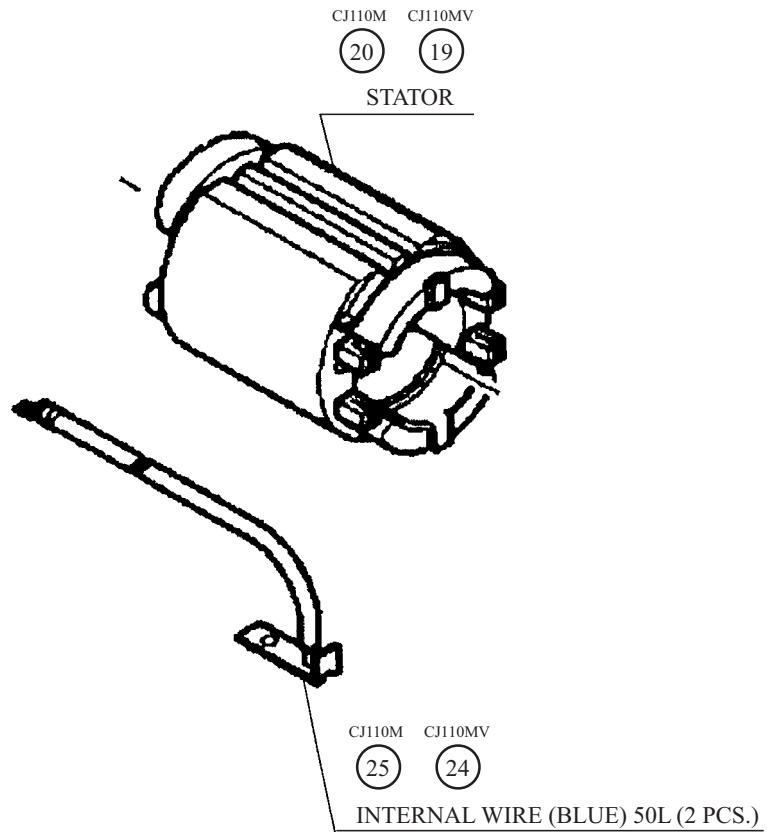
(A) <->(B): INTERCHANGEABLE  
(A) <- (B): (B) CAN BE A SUBSTITUTE FOR (A)

(A) -X- (B): NOT INTERCHANGEABLE  
(A) -> (B): (A) CAN BE A SUBSTITUTE FOR (B)

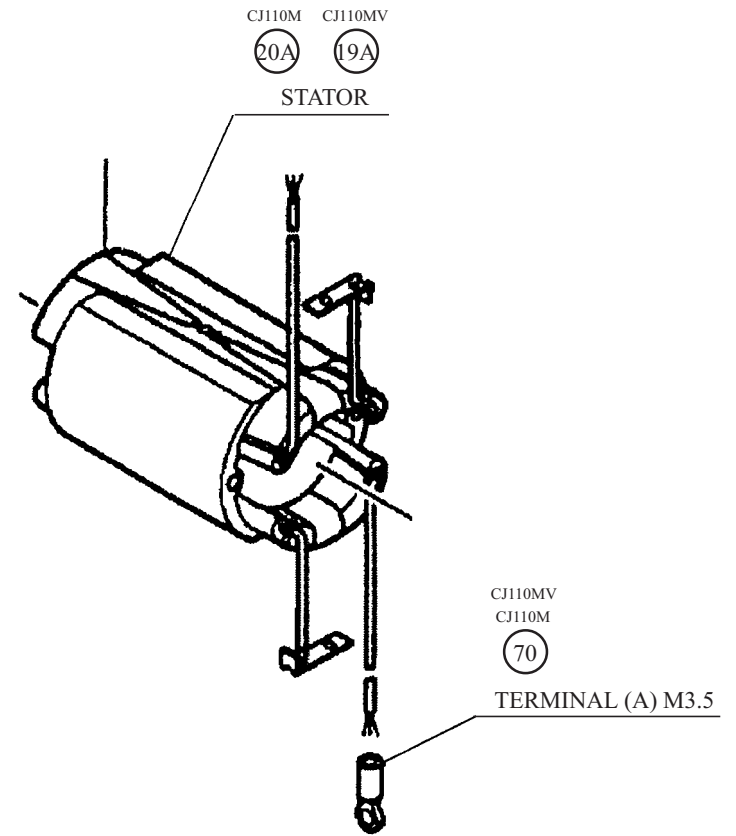
\* SUPPLY "C": "CONTINUED". "D": "DISCONTINUED" APPLIES ONLY TO THE SUBJECT MODEL(S). THE INDICATED PART MAY STILL BE SUPPLIED FOR OTHER APPLICABLE MDELS. (SEE "INTERCHANGEABILITY LIST".)

5. ILLUSTRATION OF CHANGE:

(A) BEFORE CHANGE

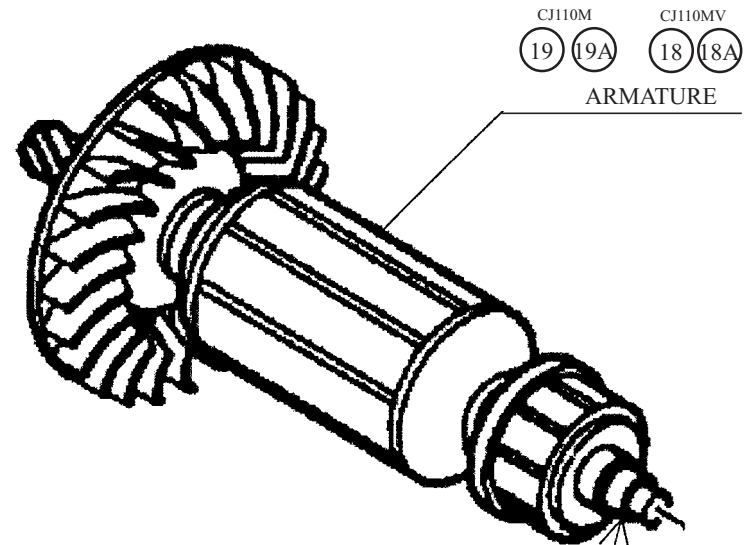


(B) AFTER CHANGE



INTERNAL WIRE IS FACTORY- INSTALLED TO STATOR.

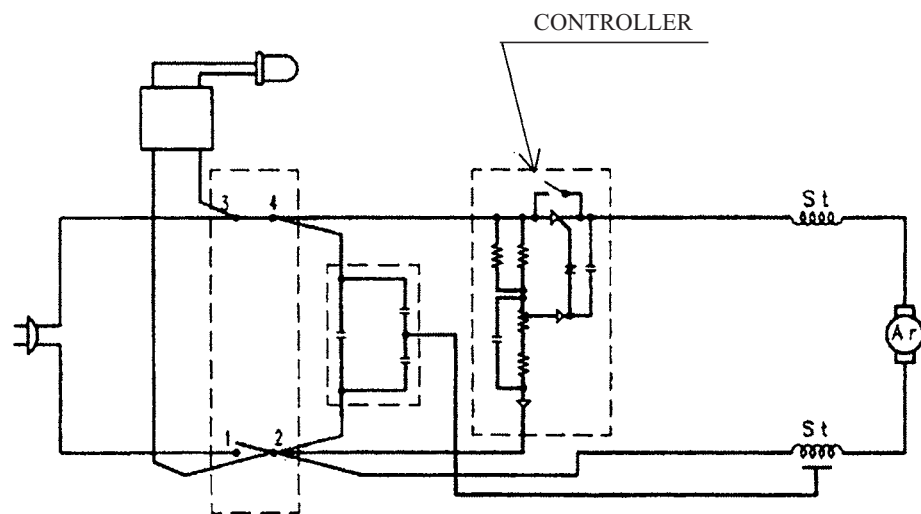
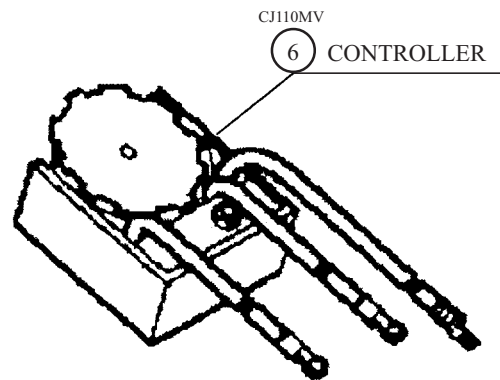
5. ILLUSTRATION OF CHANGE:



COLOR OF RESIN AT THE BACK OF  
COMMUTATOR IS DIFFERENT AS FOLLOWS.  
BEFORE CHANGE: GRAY  
AFTER CHANGE: BROWN

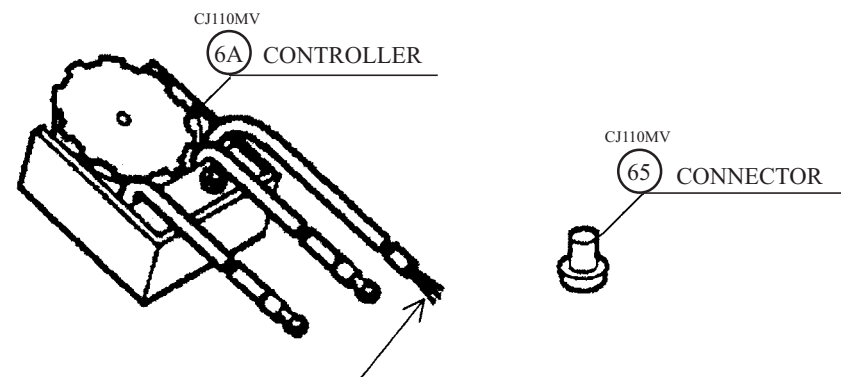
5. ILLUSTRATION OF CHANGE:

(A) BEFORE CHANGE

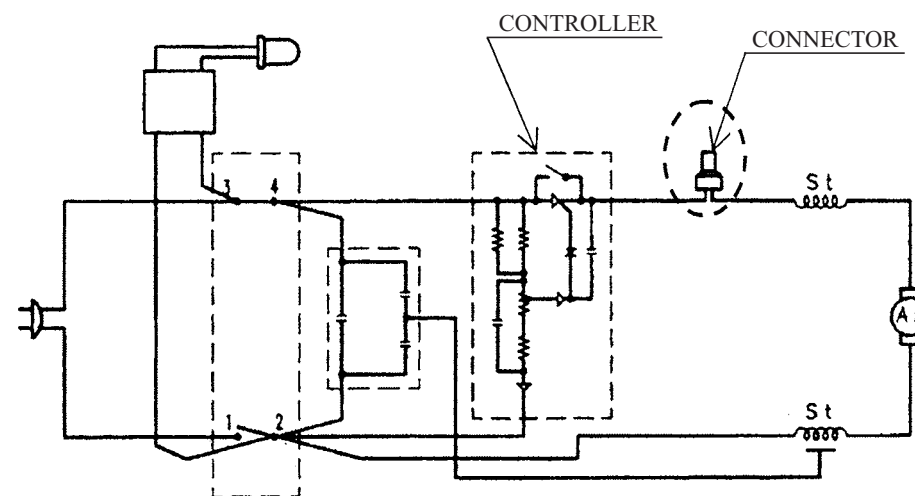


CIRCUIT DIAGRAM

(B) AFTER CHANGE



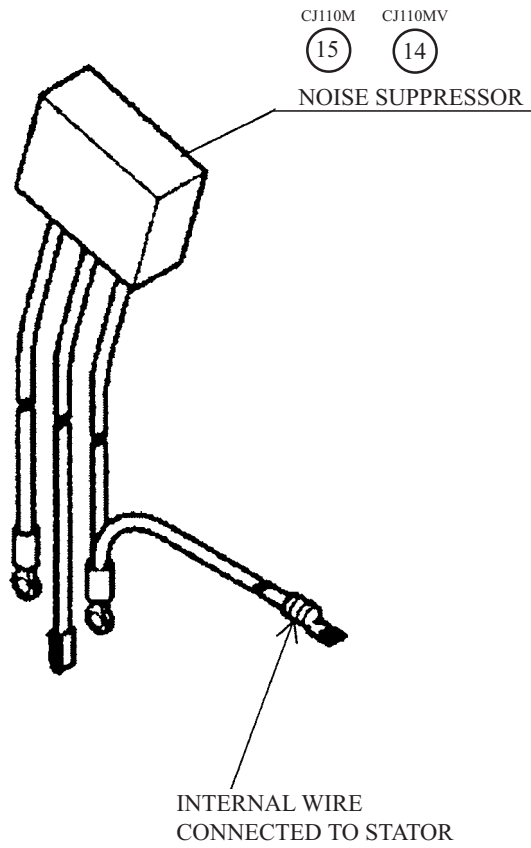
TERMINAL IS DELETED AND CONNECTOR IS ADDED. OWING TO THIS CHANGE, CONTROLLER IS CRIMP-CONNECTED TO STATOR.



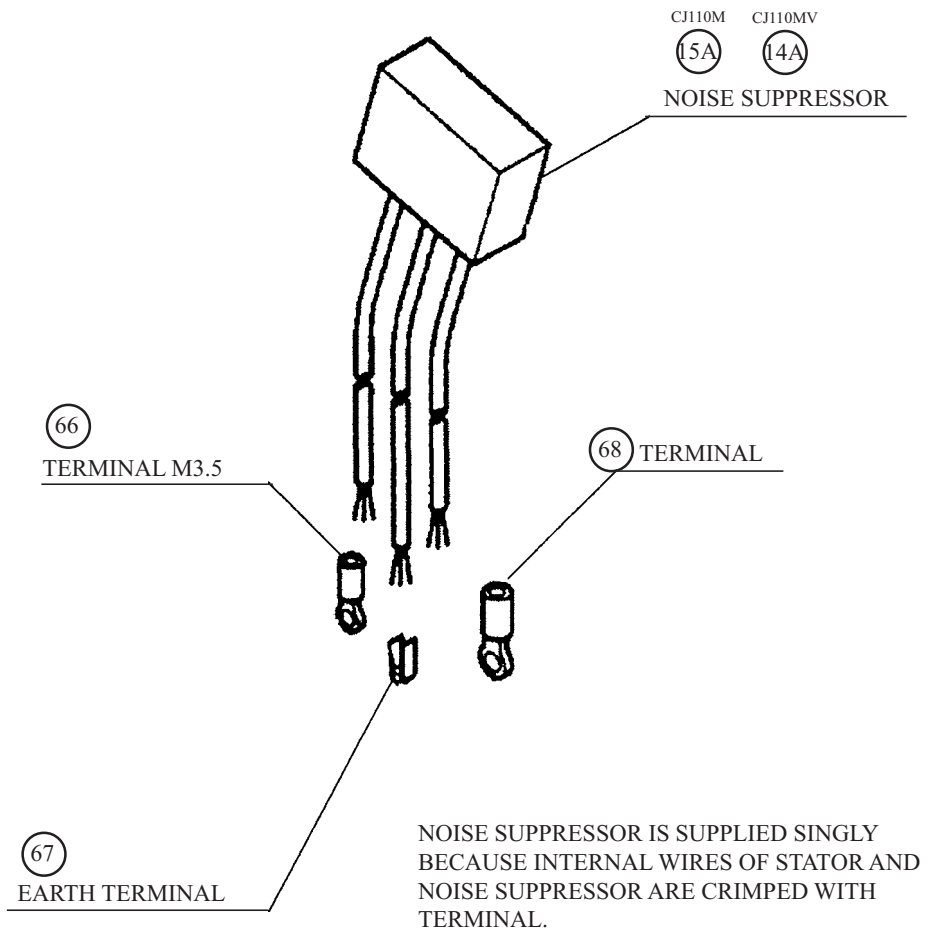
CIRCUIT DIAGRAM

5. ILLUSTRATION OF CHANGE:

(A) BEFORE CHANGE



(B) AFTER CHANGE



5. ILLUSTRATION OF CHANGE:

AFTER CHANGE

CJ110M    CJ110MV  
69        71

STATOR SPACER (2 PCS.)



STATOR SPACERS ARE MOUNTED  
TO RIBS ON ONE SIDE OF HOUSING.

