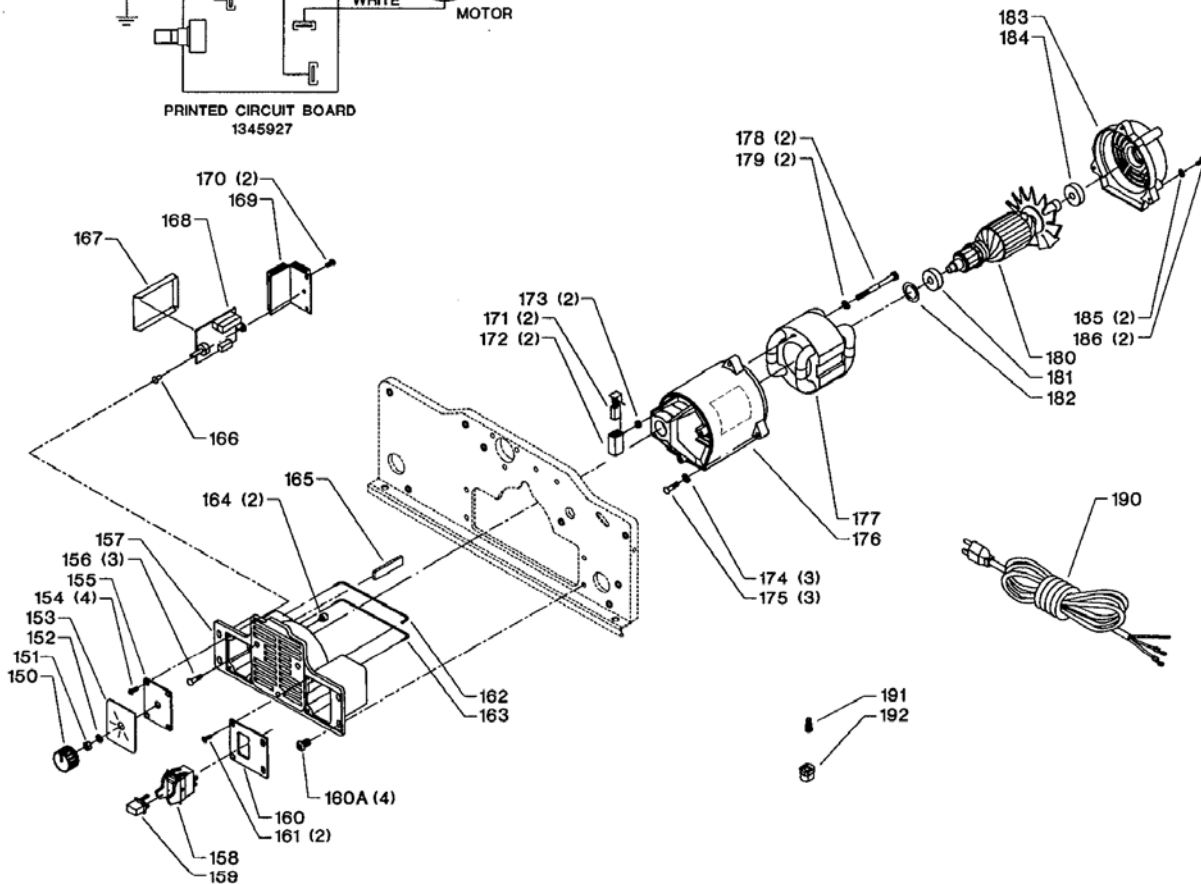
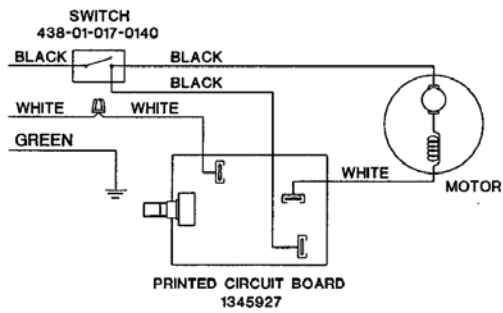
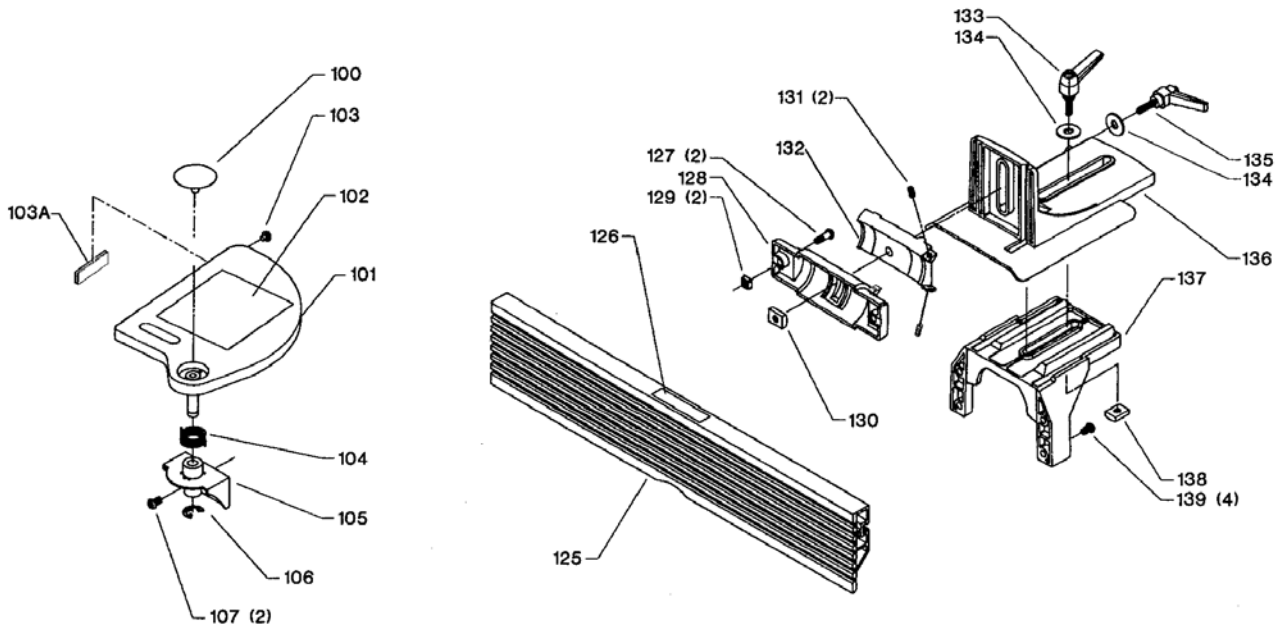


REPLACEMENT PARTS

Ref.			Ref.		
<u>No.</u>	<u>Part No.</u>	<u>Description</u>	<u>No.</u>	<u>Part No.</u>	<u>Description</u>
1	901394	TABLE	35	1345866	HOLE PLUG
2	1243530	M8 X 30MM SOC HEAD SCREW	36	1345895	BEARING RETAINER
3	1345881	OUTFEED SUPPORT	37	1345859	M6 X 12MM SOC BUTTON HD SCREW
4	1243339	M6 X 8MM HEX SOC SET SCREW	38	920-04-011-6611	BEARING
5	905822	END COVER	39	1345896	CUTTERHEAD PULLEY
6	1345859	M6 X 12MM SOC BUTTON HD SCREW	40	1345898	BELT
7	1345874	M6 X 12MM SELF TAP SCREW	41	1345899	BELT GUARD
8	1340106	WARNING LABEL	42	1345880	M6 X 16MM SOC BUTTON HD SCREW
9	1345872	FOAM SEAL	43	1345897	DRIVE PULLEY
10	905823	DUST CHUTE	44	1345880	M6 X 16MM SOC BUTTON HD SCREW
11	905824	NAMEPLATE	45	1246140	M6 FLAT WASHER
12	1345886	FRONT FRAME	47	905841	CORD HOLDER
13	905854	SPEED CHART	48	1345893	M6 HEX FLANGE NUT
14	1345865	BEARING RETAINER	49	1345859	M6 X 12MM SOC BUTTON HD SCREW
15	1345859	M6 X 12MM SOC BUTTON HD SCREW	50	1345891	CORD CLAMP
16	920-04-011-6611	BEARING	51	1345883	INFEED SUPPORT
17	1243497	12MM EXTERNAL RETAINING RING	52	1345885	TIE ROD
18	1345864	CUTTERHEAD LOCK	53	1243339	M6 X 8MM HEX SOC SET SCREW
19	1345859	M6 X 12MM SOC BUTTON HD SCREW	54	1243321	M6 X 10MM HEX SOC SET SCREW
20	1345860	POINTER	55	1345884	BRACKET
21	1345861	GEAR	56	1246161	M6 X 15MM HEX SOC SET SCREW
22	1345851	DEPTH SCALE	57	1243456	M6 HEX NUT
23	905821	KNOB	58	1345887	ADJUSTING ROD
24	1344330	M8 FLAT WASHER	59	1345888	SHAFT
25	1345863	FOOT	60	1345859	M6 X 12MM SOC BUTTON HD SCREW
26	1246028	RS-16 EXT RETAINING RING	61	1341544	GROMMET
27	1345878	CUTTERHEAD, INCL:	62	1345889	END COVER
27A	1243321	M6 X 10MM HEX SOC SET SCREW	63	1345874	M6 X 12MM SELF TAP SCREW
28	1345931	1/4-20 X 5/8" SOC BUTTON HD SCREW	64	1243398	M8 HEX NUT
28A	1347658	SPACER	65	905821	KNOB
29	37-072	KNIVES (SET OF 2)	70	37-108	JOINTER PUSH BLOCKS (SET OF 2)
30	1345935	CLAMP BAR	71	428-06-101-0003	2.5MM HEX WRENCH
32	1345876	KNIFE ADJUSTER	72	422-29-101-0002	4MM HEX WRENCH
34	905663	REAR FRAME			



REPLACEMENT PARTS

Ref.	No.	Part No.	Description	Ref.	No.	Part No.	Description
	100	1345871	HOLE PLUG		160	906207	SWITCH COVER
	101	1345937	GUARD ASSY, INCL;		160A	1345934	SPECIAL SOC BUTTON HD SCREW
	102	1340104	WARNING LABEL		161	1343612	M4 X 12MM FLAT HD SCREW
	103	1345870	BUMPER		162	1345916	WHITE JUMPER WIRE
	103A	1345936	PLASTIC SHOE		163	1345917	BLACK JUMPER WIRE
	104	1345868	SPRING		164	1345925	BRUSH PAD
	105	1345867	BRACKET		165	1345930	DUST SEAL
	106	1246058	10MM EXT RETAIN RING		166	1342446	M4 X 8MM PAN HEAD SCREW
	107	1345859	M6 X 12MM SOC BUTTON HD SCREW		167	1345926	INSULATOR
	125	1345904	FENCE		168	1345927	SPEED CONTROLLER
	126	905850	CAUTION LABEL		169	1345928	HEAT SINK
	127	1345880	M6 X 16MM SOC BUTTON HD SCREW		170	1342446	M4 X 8MM PAN HEAD SCREW
	128	906203	BEVEL BRACKET		171	1345914	BRUSH
	129	n 1349942	SPECIAL NUT		172	1345915	BRUSH HOLDER
	130	1345900	SPECIAL NUT		173	1343504	M5 LOCK NUT
	131	1347657	M5 X 8MM NYLOK HEX SOC SET SCREW		174	1343538	5MM LOCK WASHER
	132	906204	INTERMEDIATE BRACKET		175	1310146	M5 X 30MM PAN HEAD SCREW
	133	1345907	FENCE LOCK		176	1345913	HOUSING
	134	1344330	M8 FLAT WASHER		177	1345912	FIELD
	135	1345903	TILT LOCK LEVER ASSY		178	1343980	M5 X 60MM PAN HEAD SCREW
	136	906206	FENCE SLIDE BRACKET		179	1343538	5MM LOCK WASHER
	137	906205	FENCE BRACKET		180	1345911	ARMATURE
	138	1345900	SPECIAL NUT		181	920-08-020-5352	BALL BEARING
	139	1345880	M6 X 16MM SOC BUTTON HD SCREW		182	1343125	WAVY WASHER
	*	1345908	MOTOR ASSY, INCL:		183	1345909	END COVER
	150	1345920	KNOB		184	1345910	BALL BEARING
	151	1345921	SPECIAL NUT		185	1320102	STAR WASHER
	152	1345922	SPECIAL WASHER		186	1342446	M4 X 8MM PAN HEAD SCREW
	153	1345852	SPEED DIAL		190	1345929	CORD W/TERMINALS
	154	1343612	M4 X 12MM FLAT HD SCREW		191	438-01-007-0009	WIRE NUT
	155	1345923	COVER		192	1341570	STRAIN RELIEF
	156	1345924	M4 X 25MM PAN HD SCREW				
	157	1345918	FRAME		*		NO 1 SHOWN ASSEMBLED
	158	1343759	SWITCH, INCL:				
	159	400-06-068-0002	SWITCH KEY				

STANDARD SAFETY EQUIPMENT

In order to promote tool safety, Delta Machinery strictly enforces the policy of repairing or replacing any damaged or missing standard safety equipment on machines presented to Delta Authorized Service Centers for service/repairs. Any product that is presented to a Delta Authorized Service Centers for repairs which contains missing or damaged standard safety equipment will have that equipment repaired or replaced and the customer will be charged for any such service/repairs. Customers can avoid such charges only if the missing safety component is supplied to the service center at the time of repair.

This parts list is provided to aid in obtaining service parts. Copies of the instruction and maintenance literature can be obtained through the Delta Technical Publications Department or through your service outlet.