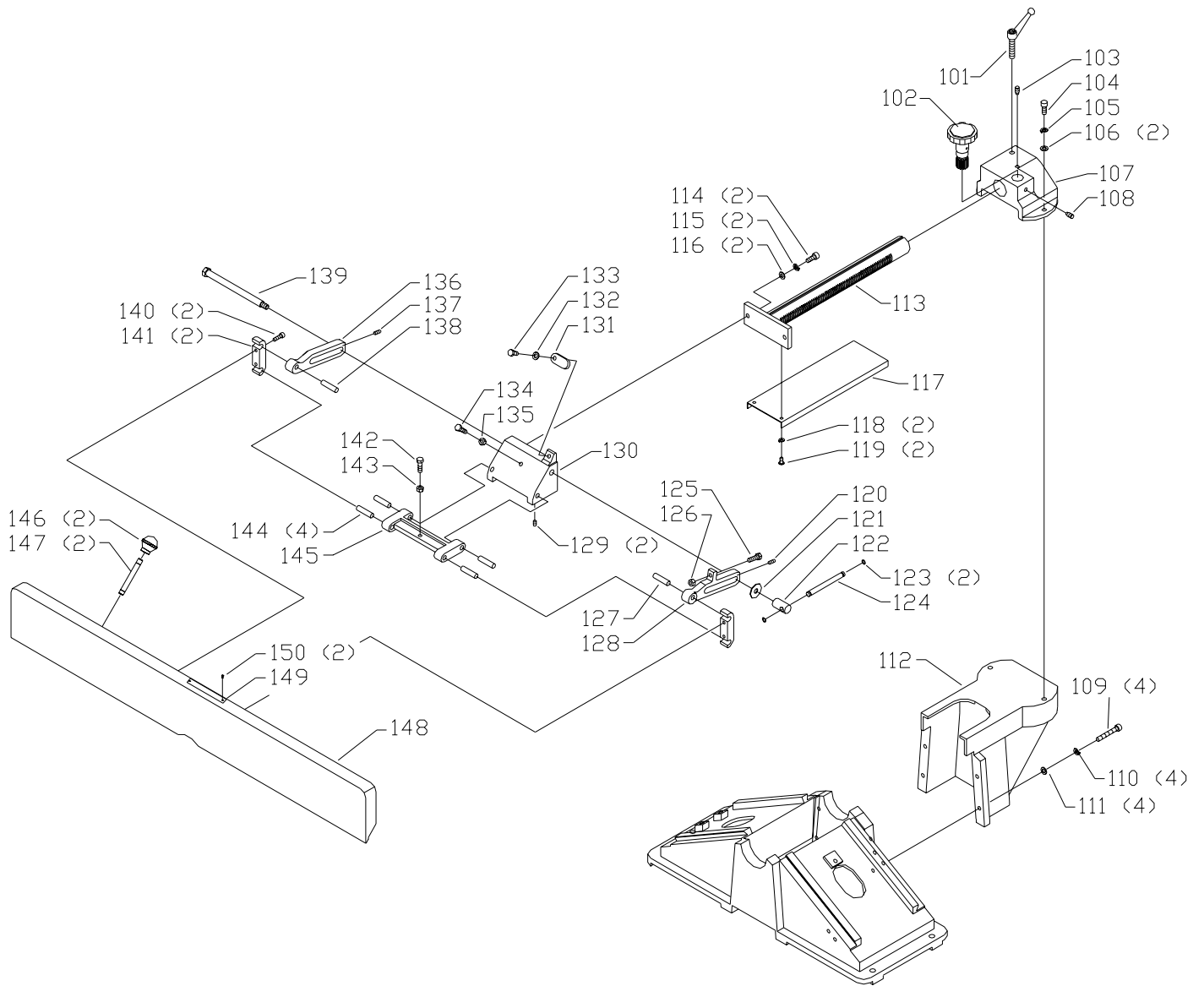


REPLACEMENT PARTS

| Ref. | | | Ref. | | |
|------------|-----------------|-----------------------------|------------|---------------------|-----------------------------|
| <u>No.</u> | <u>Part No.</u> | <u>Description</u> | <u>No.</u> | <u>Part No.</u> | <u>Description</u> |
| * | 1345487 | CUTTERHEAD ASSY, INCL: | 44 | 1340132 | PLATE |
| 1 | 1340196 | KNIFE SCREW | 45 | 1340133 | SPRING |
| 2 | 1345488 | BAR | 46 | 1340134 | CUP |
| 3 | 37-355 | KNIVES (SET OF 3) | 47 | 1340135 | RETAINER |
| 4 | 1243321 | M6 X 10MM HEX SOC SET SCREW | 48 | 1246047 | M5 X 16MM CHEESE HD SCREW |
| 5 | 909575 | PULLEY, T2 | 49 | 1346095 | SPACER |
| | 1340112 | PULLEY, T1 | 50 | 1345508 | HANDLE |
| 6 | 909576 | SUPPORT (RH), T2 | 51 | 1345509 | LEVER ROD |
| | 902303 | SUPPORT (RH), T1 | 52 | 1345510 | KNOB |
| 7 | 1345491 | STUD | 53 | 1345594 | M14 HEX NUT |
| 8 | 1243360 | M10.2 LOCK WASHER | 54 | 1340142 | SPECIAL BOLT |
| 9 | 1243496 | M10 HEX NUT | 55 | 1346093 | ROD |
| 10 | 1320106 | BALL BEARING | 56 | 1346094 | SHAFT |
| 11 | 1345595 | KEY | 57 | 1246028 | EXT RET RING |
| 12A | 1330112 | NUT | 58 | 909580 | BLOCK, T2 |
| 12B | 1246008 | M5 X 12MM HEX SOC SET SCREW | | 1345507 | BLOCK, T1 |
| 13 | 1345493 | CUTTERHEAD | 59 | 1345506 | LINK |
| 14 | 1086894 | BALL BEARING | 60 | 1330670 | EXT RET RING |
| 15 | 909577 | SUPPORT (LH), T2 | 61 | 1345504 | BRACKET |
| | 1340116 | SUPPORT (LH), T1 | 62 | 1246157 | M8.1 LOCK WASHER |
| 16 | 1345859 | M6 X 12MM BUTTON HD SCREW | 63 | 1246054 | M8 X 20MM HEX SOC HD SCREW |
| 17 | 1340622 | M6.4 FLAT WASHER | 64 | 1345505 | SHAFT |
| 18 | 1340122 | KNOB | 65 | 1346092 | CONNECTOR |
| 19 | 1310055 | M6 X 6MM HEX SOC SET SCREW | 66 | NOT AVAILABLE | BASE ASSY (NOTE A) |
| 20 | 1340123 | COLLAR | 67 | 1345497 | GIB |
| 21 | 928-05-013-1378 | WAVE WASHER | 68 | 1246187 | M6 X 25MM HEX SOC SET SCREW |
| 22 | 1347020 | M11.5 FLAT WASHER | 69 | 1243456 | M6 HEX NUT |
| 23 | 1345511 | SHAFT | 70 | 1340120 | LOCKSCREW |
| 24 | 1340124 | BLOCK | 71 | 1340118 | STOP SCREW |
| 25 | 1246157 | M8.1 LOCK WASHER | 72 | 1243398 | M8 HEX NUT |
| 26 | 1243554 | M8 X 35MM HEX SOC HD SCREW | 73 | 909578 | BLOCK, T2 |
| 27 | 1345502 | GUARD, INCL: | | 1345495 | BLOCK, T1 |
| 28 | 1246008 | M5 X 12MM HEX SOC SET SCREW | 74 | 1246150 | M8 X 25MM HEX SOC SET SCREW |
| 29 | 1346696 | WARNING LABEL | 75 | 1243398 | M8 HEX NUT |
| 30 | 1345500 | SPACER | 76 | 1246122 | M8 X 16MM HEX SOC HD SCREW |
| 31 | 1345499 | PLATE | 77 | 1345496 | LEVER ASSY |
| 32 | 1345500 | SPACER | 80 | 37-108 | JOINTER PUSH BLOCK |
| 33 | 1345501 | POINTER | 81 | 428-07-101-0002 | 6MM HEX WRENCH |
| 34 | 1343545 | M4.1 FLAT WASHER | 82 | 422-29-101-0002 | 4MM HEX WRENCH |
| 35 | 1246154 | M4 X 16MM CHEESE HD SCREW | 83 | 428-06-101-0002 | 3MM HEX WRENCH |
| 36 | 1246053 | M8 X 25MM HEX SOC HD SCREW | 84 | 428-06-101-0003 | 2.5MM HEX WRENCH |
| 37 | 909546 | NAMEPLATE, T2 | 85 | 1343918 | 8 X 10 OPEN END WRENCH |
| | 1346699 | NAMEPLATE, T1 | 86 | 909569 | HARDWARE PACK |
| 38 | 1310016 | 5MM DRIVE SCREW | | | |
| 39 | 1246110 | M6 X 24MM SPRING PIN | * | NOT SHOWN ASSEMBLED | |
| 40 | 1345498 | SCALE | | | |
| 41 | 1346099 | SCALE BRACKET | | | |
| 42 | 1246102 | M5.3 FLAT WASHER | | | |
| 43 | 1310155 | M5 X 8MM CHEESE HD SCREW | | | |

NOTE A: BASE, FRONT AND REAR TABLES CANNOT BE SUPPLIED BECAUSE THEY MUST BE MACHINED TOGETHER FOR ACCURACY AND TRUE ALIGNMENT MAKING THIS REPAIR COST PROHIBITIVE.



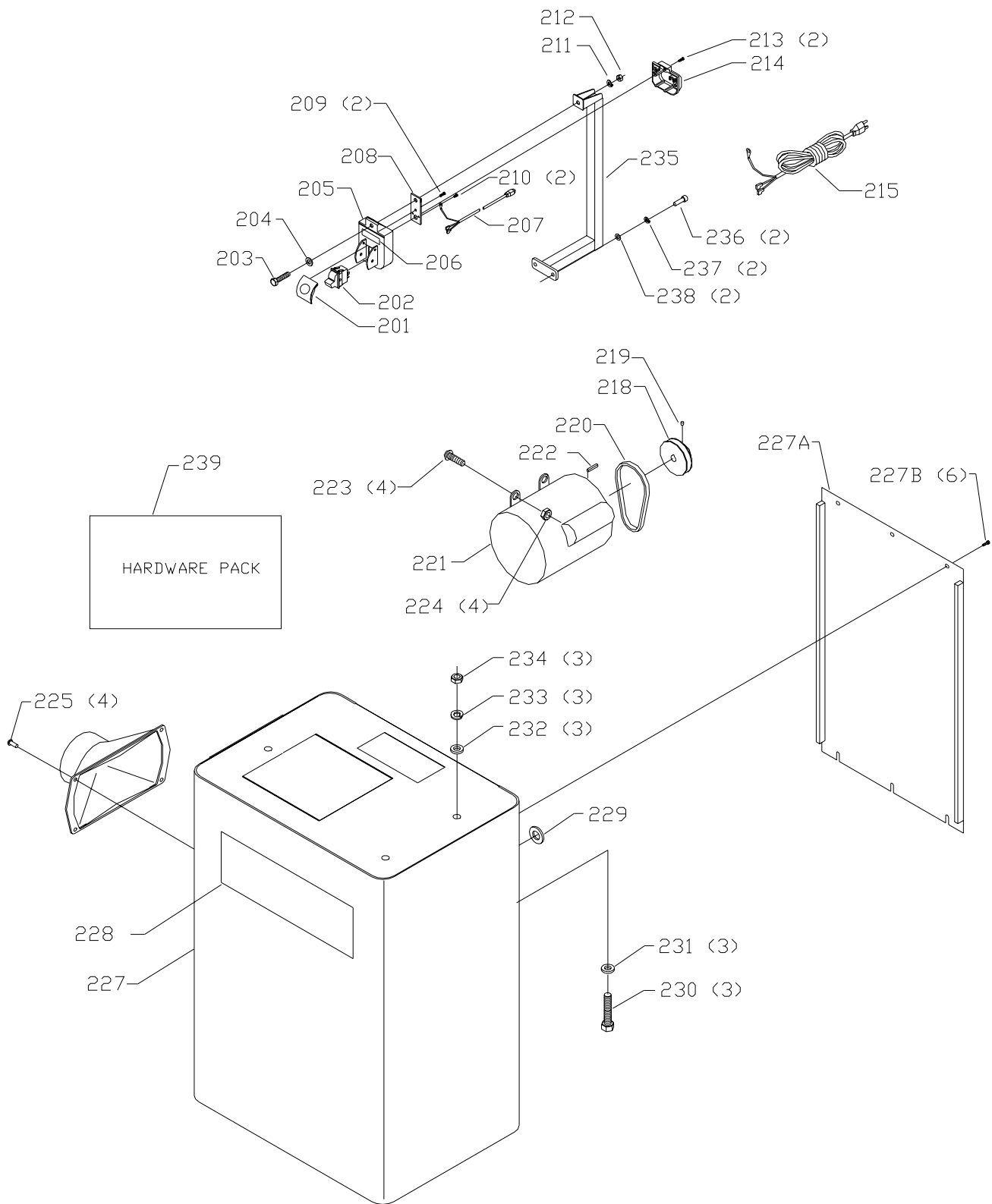
REPLACEMENT PARTS

Ref.

| <u>No.</u> | <u>Part No.</u> | <u>Description</u> |
|------------|-----------------|----------------------------------|
| 101 | 1346747 | LEVER ASSY |
| 102 | 1346746 | HANDWHEEL |
| 103 | 1346744 | SPECIAL SCREW |
| 104 | 1246054 | M8 X 20MM HEX SOC HD SCREW |
| 105 | 1246157 | M8.1 LOCK WASHER |
| 106 | 1344330 | M8 FLAT WASHER |
| 107 | 909582 | BRACKET, T2 |
| | 1346745 | BRACKET, T1 |
| 108 | 1346744 | SPECIAL SCREW |
| 109 | 1340194 | M8 X 55MM HEX SOC HD SCREW |
| 110 | 1246157 | M8.1 LOCK WASHER |
| 111 | 1344330 | M8 FLAT WASHER |
| 112 | 909588 | BRACKET, T2 |
| | 1345527 | BRACKET, T1 |
| 113 | 909583 | RAM, T2 |
| | 1345526 | RAM, T1 |
| 114 | 1246053 | M8 X 25MM HEX SOC HD SCREW |
| 115 | 1246157 | M8.1 LOCK WASHER |
| 116 | 1344330 | M8 FLAT WASHER |
| 117 | 1346741 | GUARD |
| 118 | 1243520 | M6.1 LOCK WASHER |
| 119 | 1345859 | M6 X 12MM BUTTON HD SCREW |
| 120 | 1246084 | M6 X 18MM HEX SOC SET SCR NOTE B |
| 121 | 1246116 | M10.5 FLAT WASHER |
| 122 | 1346730 | LOCKNUT |
| 123 | 1340665 | O-RING |
| 124 | 1346732 | LOCK BAR |
| 125 | 1246016 | M8 X 25MM HEX HD SCREW |
| 126 | 1243398 | M8 HEX NUT |
| 127 | 1346749 | PIN |
| 128 | 909587 | BRACKET (RH), T2 |
| | 1345521 | BRACKET (RH), T1 |
| 129 | 1243379 | M6 X 10MM HEX SOC HD SCREW |
| 130 | 909584 | FENCE BRACKET, T2 |
| | 1346735 | FENCE BRACKET, T1 |
| 131 | 1346736 | STOP |
| 132 | 1344330 | M8 FLAT WASHER |
| 133 | 1310105 | M8 X 16MM HEX HD SCREW NOTE B |
| 134 | 1246016 | M8 X 25MM HEX HD SCREW |
| 135 | 1243398 | M8 HEX NUT |
| 136 | 909581 | BRACKET (LH), T2 |
| | 1345516 | BRACKET (LH), T1 |
| 137 | 1246084 | M6 X 18MM HEX SOC SET SCR NOTE B |
| 138 | 1346749 | PIN |
| 139 | 1346739 | SPECIAL SCREW |
| 140 | 1243336 | M6 X 20MM HEX SOC HD SCREW |
| 141 | 1346740 | REAR CLAMP |
| 142 | 1246016 | M8 X 25MM HEX HD SCREW |
| 143 | 1243398 | M8 HEX NUT |
| 144 | 1346749 | PIN |
| 145 | 909585 | SUPPORT, T2 |
| | 1346737 | SUPPORT, T1 |
| 146 | 1340149 | KNOB |
| 147 | 1340150 | STUD |
| 148 | 909586 | FENCE, INCL., T2 |
| | 900980 | FENCE, INCL., T1 |
| 149 | 1346697 | WARNING LABEL |
| 150 | 1310016 | 5MM DRIVE SCREW |

* NOT SHOWN ASSEMBLED

NOTE B: WHEN SERVICING, USE THREAD RETAINING COMOUND PRIOR TO INSTALLATION.



REPLACEMENT PARTS

| Ref. | No. | Part No. | Description |
|------|-----|------------------|-------------------------------------|
| * | | 52-877 | 8" JOINTER ENCLOSED STAND, CONST OF |
| * | | 438-01-317-0146. | SWITCH ASSY, CONST OF: |
| 201 | | 422-39-067-0001 | SWITCH ACTUATOR |
| 202 | | 438-01-017-0206 | SWITCH |
| 203 | | 901-01-060-0649 | 5/16-18 X 1" HEX HD SCREW |
| 204 | | 904-01-010-1620 | FLAT WASHER |
| 205 | | 422-39-014-0009 | SWITCH BOX COVER, INCL: |
| 206 | n | 436-01-754-0007 | SWITCH LABEL, T2 |
| | | 1346700 | SWITCH LABEL, T1 |
| 207 | | 438-01-302-0718 | FEMALE CORD ASSY |
| 208 | | 422-39-089-0007 | SWITCH PLATE |
| 209 | | 901-05-163-1229 | #10-16 X 1/2" PAN HD SCREW |
| 210 | | 901-05-163-1229 | #10-16 X 1/2" PAN HD SCREW |
| 211 | | 904-02-010-1703 | 5/16" LOCK WASHER |
| 212 | | 902-01-010-1300 | 5/16-18 HEX NUT |
| 213 | | 901-05-163-1229 | #10-16 X 1/2" PAN HD SCREW |
| 214 | | 422-39-013-0001 | SWITCH BOX |
| 215 | | 438-01-302-0718 | CORD SET |
| 218 | | 926-04-013-1775 | PULLEY, INCL: |
| 219 | | 901-04-150-0205 | 5/16-18 X 1/4" HEX SOC SET SCREW |
| 220 | | 925-01-011-2165 | V BELT |
| 221 | n | 912058 | MOTOR ASSY, T2 |
| | | 438-02-314-2175 | MOTOR ASSY, T1 |
| 222 | | 927-03-010-2695 | KEY |
| 223 | | 901-11-020-0834 | 5/16-18 X 3/4" CARRIAGE HD SCREW |
| 224 | | 902-01-503-1514 | 5/16-18 FLANGE NUT |
| 225 | | 901-05-213-1711 | #10-16 X 1/2" HEX WASHER HD SCREW |
| 226 | n | 910353 | DUST CHUTE, T2 |
| | | 406-12-026-0001 | DUST CHUTE, T1 |
| 227 | | 909590 | CABINET ASSY, INCL.; T2 |
| | | 436-01-318-0022 | CABINET ASSY, INCL.; T1 |
| 227A | | 909589 | BACK PANEL, T2 |
| | | 436-01-123-0003 | BACK PANEL, T1 |
| 227B | | 901-06-443-1806 | #10-24 X 1/2" HEX HD SCREW |
| 228 | n | 436-01-754-0004 | NAMEPLATE, T2 |
| | | 436-01-137-0002 | NAMEPLATE, T1 |
| 229 | | 438-01-011-0051 | BUSHING INSULATOR |
| 230 | | 901-01-060-0646 | 3/8-16 X 2" HEX HD SCREW |
| 231 | | 904-01-010-1605 | 3/8" FLAT WASHER |
| 232 | | 904-01-010-1605 | 3/8" FLAT WASHER |
| 233 | | 904-02-020-1704 | 3/8" LOCK WASHER |
| 234 | | 1350291 | 3/8-16 HEX NUT |
| 235 | | 1345503 | SWITCH MOUNTING BRACKET |
| 236 | | 1246122 | M8 X 16MM HEX SOC HD SCREW |
| 237 | | 1246157 | M8.1 LOCK WASHER |
| 238 | | 1344330 | M8 FLAT WASHER |
| 239 | | 909570 | STAND HARDWARE PACK |
| * | | | NOT SHOWN ASSEMBLED |

STANDARD SAFETY EQUIPMENT

In order to promote tool safety, Delta Machinery strictly enforces the policy of repairing or replacing any damaged or missing standard safety equipment on machines presented to Delta Authorized Service Centers for service/repairs. Any product that is presented to a Delta Authorized Service Centers for repairs which contains missing or damaged standard safety equipment will have that equipment repaired or replaced and the customer will be charged for any such service/repairs. Customers can avoid such charges only if the missing safety component is supplied to the service center at the time of repair.

This parts list is provided to aid in obtaining service parts. Copies of the instruction and maintenance literature can be obtained through the Delta Technical Publications Department or through your service outlet.