



36-L31, 36-L31X, 36-L51, 36-L51X,  
36-L51L, & 36-L53L

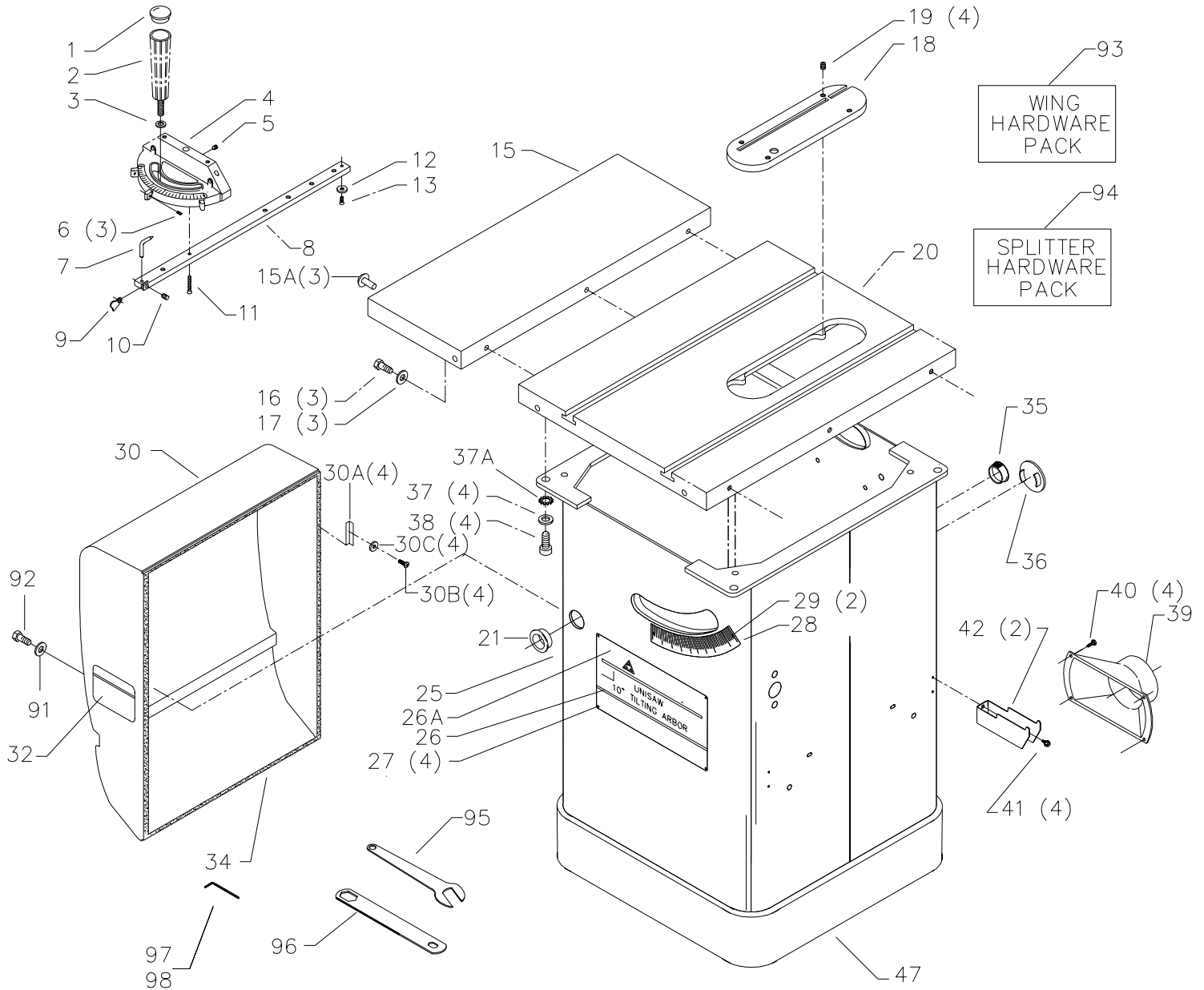
UNISAW®

10" LEFT TILTING ARBOR SAW

CS-4K-17-2

PARTS NO. 422-40-651-0019

Date: 04/17/03



# REPLACEMENT PARTS

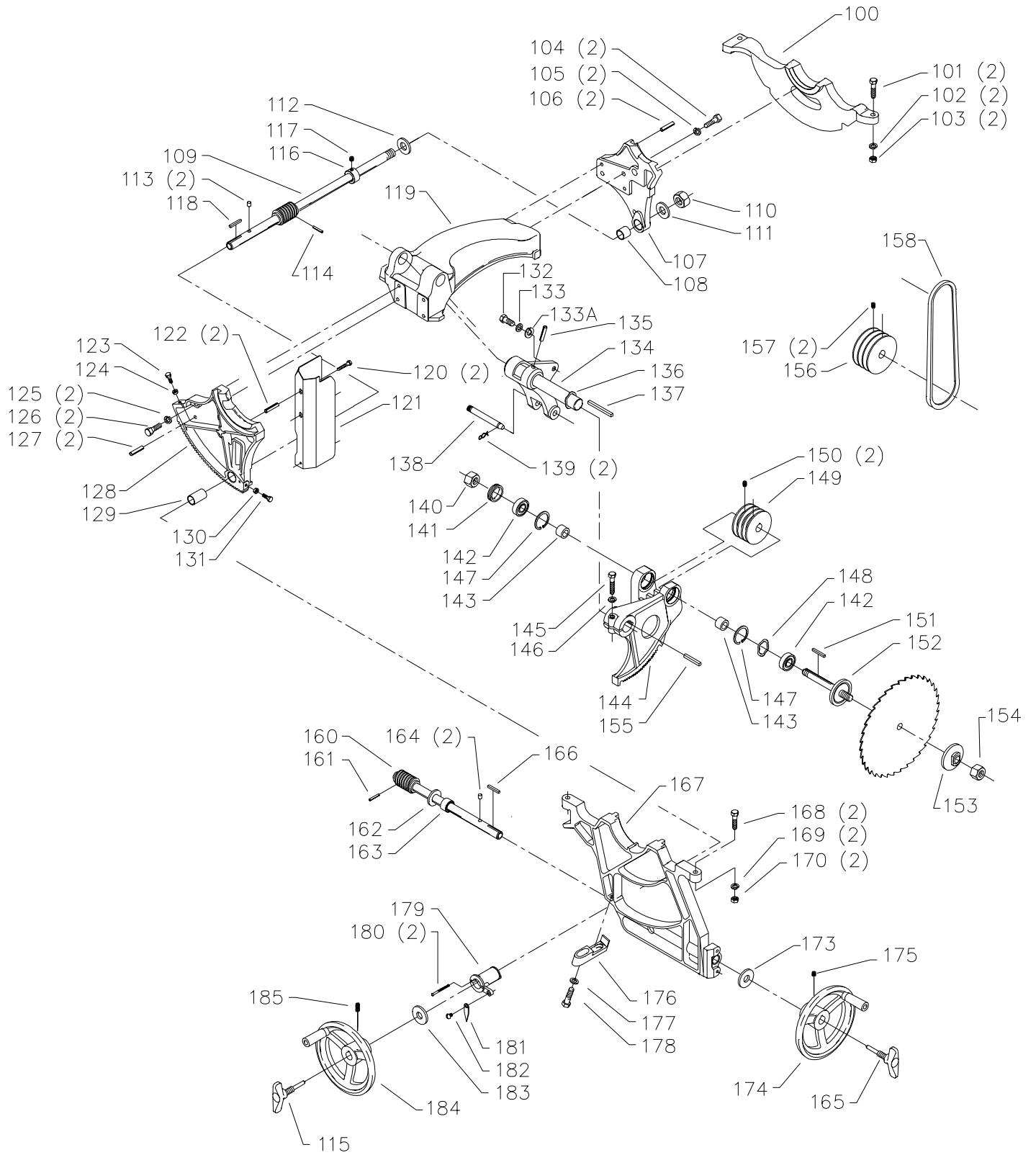
**Ref.**

<b>No.</b>	<b>Part No.</b>	<b>Description</b>
*	34-895	MITER GAGE, CONST OF:
1	422-02-074-0001	PLUG, 36-L31, 36-L51, 36-L51L, & 36-L53L
2	422-02-060-0003	HANDLE, 36-L31, 36-L51, 36-L51L, & 36-L53L
	422-02-060-0004	HANDLE, 36-L31X, 36-L51X
3	904-07-010-5555	1/4" FIBER WASHER
4	422-01-355-0004	MITER GAGE BODY, INCL:
5	901-04-150-1181	1/4-28 X 3/16" HEX SOC SET SCREW
6	901-04-150-9428	#08-32 X 1/2" HEX SOC SET SCREW
7	422-01-075-0001	POINTER
8	422-04-004-0001	BAR, INCL:
9	422-01-088-0004	STOP LINK
10	901-04-150-1181	1/4-28 X 3/16" HEX SOC SET SCREW
11	422-01-112-0001	SCREW
12	422-04-072-0001	PLATE
13	901-02-030-5750	1/4-28 X 5/16" FLAT HD SCREW
15	36-937	EXTENSION TABLE, INCL:
15A	438-01-011-0077	PLUG
16	901-01-060-9964	7/16-20 X 1 1/4" HEX HD SCREW
17	904-10-031-2097	7/16" FLAT WASHER
18	36-861	STANDARD INSERT, INCL:
19	901-04-461-5297	1/4-28 X 3/8" HEX SOC SET SCREW
20	422-40-391-0001	TABLE
21	438-01-011-0021	INSULATOR
24	422-04-137-0012	NAMEPLATE, 36-L31, 36-L51, 36-L51L, & 36-L53L
	422-04-137-0014	NAMEPLATE, 36-L31X, 36-L51X
25	422-40-318-0010	CABINET ASSY, INCL:
26A	422-04-137-0013	WARNING LABEL
27	1087794	RIVET
28	422-40-132-0002	TILT SCALE
29	1087794	RIVET
30	422-04-331-0014	MOTOR COVER, INCL:
30A	422-04-122-0005	SPRING CLIP
30B	901-02-453-1123	10-32 X 1/2" PAN HD SCREW
30C	904-01-013-1868	#10 FLAT WASHER
32	422-04-752-0184	WARNING LABEL
34	400-06-416-0003	GASKET
35	438-01-011-0065	PLUG
36	438-01-011-0074	HOLE PLUG - 2" DIA
37	904-10-031-2097	WASHER
37A	904-03-030-1771	7/16" EXT. TOOTH K24WASHER
38	901-03-010-1487	7/16-20 X 3/4" HEX SOC HD SCREW
39	406-12-026-0001	DUST CHUTE
40	901-05-213-1498	#10 X 1/2" HEX WASHER HD SCREW
41	901-05-213-1498	#10 X 1/2" HEX WASHER HD SCREW
42	422-35-014-0002	RIP FENCE HOLDER
91	904-01-013-1885	1/4" FLAT WASHER
92	901-02-763-1802	1/4"-20 x 5/8" HEX HD SCREW
93	422-04-725-0006	WING HDWE PACK
94	422-04-725-0002	SPLITTER HDWE PACK
47	422-04-305-0001	SUB BASE
95	955-01-050-1472	WRENCH
96	422-39-101-0001	WRENCH -7/8 X 1/2"
97	955-03-010-0001	1/8" HEX WRENCH
98	955-03-010-2155	5/64" HEX WRENCH

USE ITEMS LISTED BELOW TO MOUNT CABINET TO SUB-BASE

**	901-11-020-0834	5/16-18 X 3/4" CARRAGE HD SCREW
**	902-01-503-1514	5/16-18 FLANGED NUT

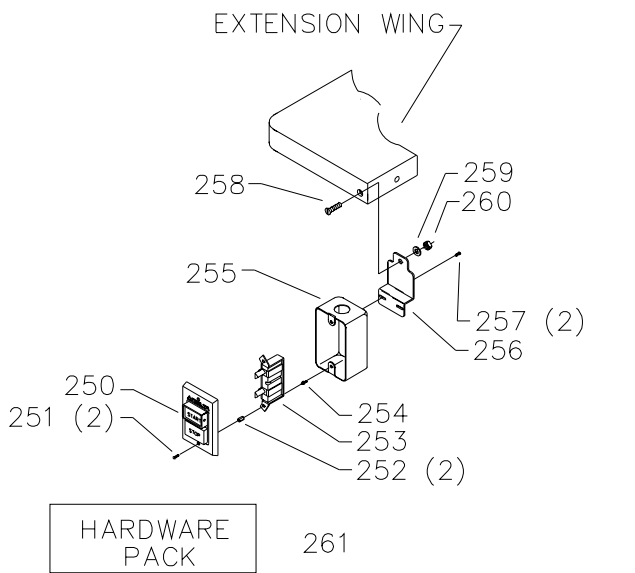
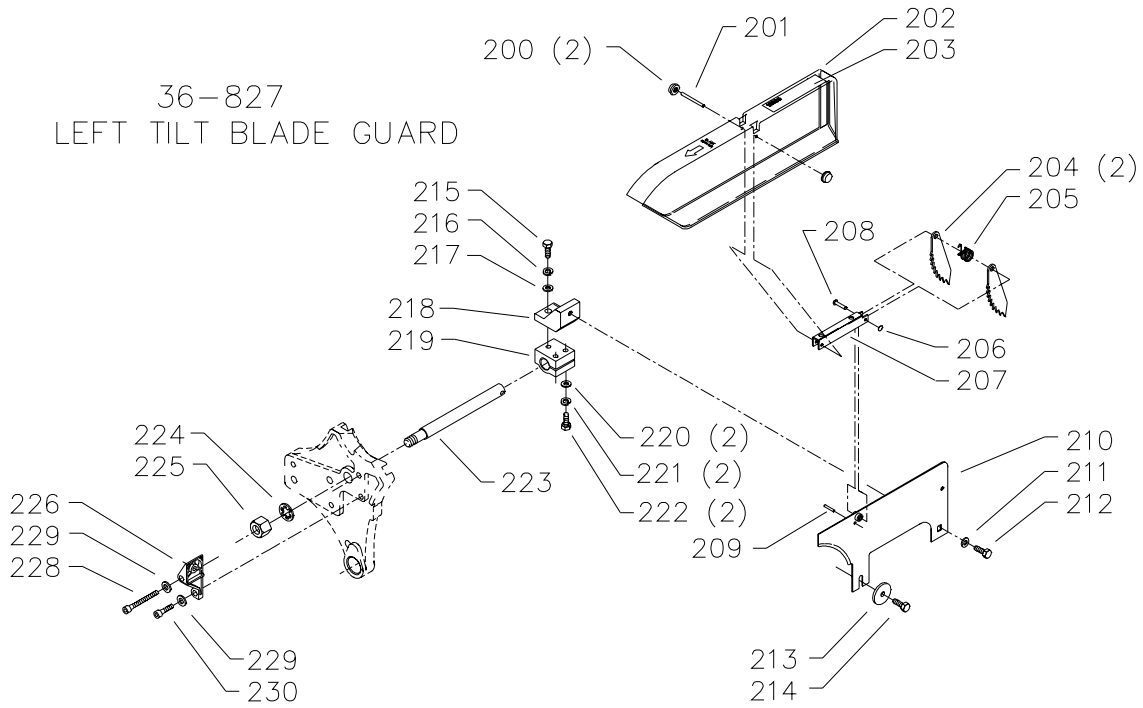
\* NOT SHOWN ASSEMBLED



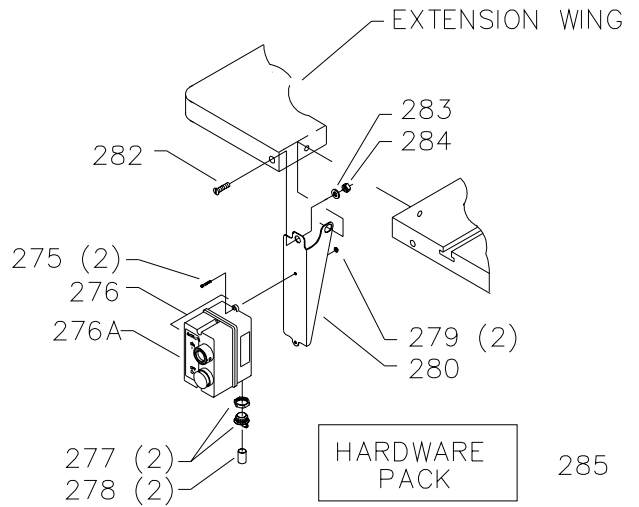
# REPLACEMENT PARTS

Ref.	Part No.	Description	Ref.	Part No.	Description
100	422-04-014-0042	TRUNNION BRACKET - REAR	156	41-644	MOTOR PULLEY, INCL:
101	901-01-060-0682	3/8-24 X 1 1/2" HEX HD SCREW	157	0908653	5/16-18 X 3/8" HEX SOC HD SCREW
102	904-02-020-1704	3/8" LOCK WASHER	158	49-124	V-BELTS - MATCHED SET OF THREE
103	902-01-010-1207	3/8-24 HEX NUT	160	422-04-406-5001	TILT SHAFT W/WORM, INCL:
104	901-03-010-0775	3/8-16 X 1" HEX SOC HD SCREW	161	905-01-010-2706	3/16" X 1" SPRING PIN
105	904-02-020-1704	3/8" LOCK WASHER	162	904-01-021-3577	3/4" FIBER WASHER
106	905-01-010-2734	5/16" X 1" SPRING PIN	163	904-10-031-4509	COLLAR
107	422-40-395-0002	TRUNNION - REAR, INCL:	164	422-04-074-0001	PLUG
108	920-75-011-3934	BEARING	165	422-04-412-0009	LOCK KNOB, 36-L31, 36-L51, 36-L51L, & 36-L53L
*	422-04-406-5002	RAISING SHAFT ASSY, CONST OF:			LOCK KNOB, 36-L31X, 36-L51X
109	422-04-406-0001	SHAFT W/WORM, INCL:		422-04-412-0011	1 3/8" KEY
110	902-01-210-1036	3/4-16 LOCK NUT	166	927-03-010-2650	FRONT TRUNNION BRACKET
111	904-01-021-3577	3/4" FIBER WASHER	167	422-40-014-0001	3/8-24 X 1 1/2" HEX HD SCREW
112	904-01-021-3577	3/4" FIBER WASHER	168	901-01-060-0682	3/8" LOCK WASHER
113	422-04-074-0001	PLUG	169	904-02-020-1704	3/8-24 HEX NUT
114	905-01-010-2706	3/16" X 1" SPRING PIN	170	902-01-010-1207	5/16-18 X 3/4" HEX SOC HD SCREW
115	422-04-412-0009	LOCK KNOB, 36-L31, 36-L51, 36-L51L, & 36-L53L	172	901-03-040-8016	3/4" FIBER WASHER
	422-04-412-0011	LOCK KNOB, 36-L31X, 36-L51X	173	904-07-010-5569	HANDWHEEL, INCL., 36-L31, 36-L51, 36-L51L, & 36-L53L
116	434-01-404-0001	COLLAR, INCL:	174	422-04-400-0005	HANDWHEEL, INCL., 36-L31X, 36-L51X
117	901-04-190-0201	5/16-18 X 5/16" HEX SOC SET SCREW		422-04-412-0007	5/16-18 X 5/16" HEX SOC SET SCREW
118	927-03-010-2650	1 3/8" KEY	175	901-04-190-0201	GUIDE BLOCK
119	422-40-102-0001	YOKE	176	422-04-055-0006	WASHER
120	901-01-060-0613	5/16-18 X 1 3/4" HEX HD SCREW	177	904-10-031-2097	7/16-20 X 1 1/2" HEX HD SCREW
121	422-40-036-0001	DUST DEFLECTOR	178	901-01-060-0681	POINTER BRACKET
122	422-04-104-5005	SLEEVE	179	422-04-014-2008	#08-32 X 2" FILL HD SCREW
123	901-01-060-5769	5/16-24 X 1" HEX HD SCREW	180	0919714	POINTER
124	902-01-020-1228	5/16-24 JAM NUT	181	422-40-075-0001	1/4-20 X 3/8" ROUND HD SCREW
125	904-02-020-1704	3/8" LOCK WASHER	182	901-06-110-3036	3/4" FIBER WASHER
126	901-03-010-0775	3/8-16 X 1" HEX SOC HD SCREW	183	904-07-010-5569	HANDWHEEL, INCL., 36-L31, 36-L51, 36-L51L, & 36-L53L
127	905-01-010-2734	5/16" X 1" SPRING PIN	184	422-04-400-0005	HANDWHEEL, INCL., 36-L31X, 36-L51X
128	422-40-395-0001	FRONT TRUNNION, INCL:		422-04-412-0007	5/16-18 X 5/16" HEX SOC SET SCREW
129	920-75-011-3935	BUSHING	185	901-04-190-0201	8' #14-3 1PH 230V 15A CORD
130	902-01-020-1228	5/16-24 JAM NUT		438-01-302-0381	9' #12-3 1PH 230V 20A CORD
131	901-01-060-5769	5/16-24 X 1" HEX HD SCREW	**	438-01-302-2004	1PH, 3HP, 230V MOTOR
132	901-01-060-0664	7/16-20 X 1" HEX HD SCREW	**	83-653	1PH, 5HP, 230V MOTOR
133	904-10-031-2097	WASHER	**	83-672	3PH, 5HP, 230/460V MOTOR
133A	904-03-030-1771	7/16" EXT. TOOTH LOCK WASHER	**	87-372	NOT SHOWN ASSEMBLED
134	422-40-314-0004	MOTOR BRACKET W/SHAFT, INCL:	*		NOT SHOWN
135	905-01-010-5072	1/4" X 2" SPRING PIN	**		
136	928-06-011-4128	1 1/4" WAVE WASHER			
137	927-03-010-2657	2.937" KEY			
138	422-04-071-5001	STEEL PIN			
139	422-04-079-5001	SPRING CLIP			
*	422-40-314-0002	ARBOR BRACKET, CONST OF:			
140	902-01-200-9847	SPECIAL NUT			
141	902-07-020-7176	BEARING CLOSURE NUT			
142	1086894	BALL BEARING			
143	422-04-104-0002	SPACER			
144	422-40-314-0003	ARBOR BRACKET, INCL:			
145	901-01-060-3102	3/8-16 X 1 3/4" HEX HD SCREW			
146	904-02-020-1704	3/8" LOCK WASHER			
147	904-15-101-7147	INTERNAL RETAINING RING			
148	928-06-020-7382	LOAD SPRING			
149	926-03-991-2328	ARBOR PULLEY, INCL:			
150	0908653	5/16-18 X 3/8" HEX SOC HD SCREW			
151	927-03-020-2660	1 1/2" KEY			
152	422-40-303-0002	ARBOR W/FLANGE			
153	422-04-103-5001	FLANGE			
154	902-01-201-2571	.656-12 JAM NUT			
155	927-03-010-2653	1 15/16" KEY			

36-827  
LEFT TILT BLADE GUARD



FOR USE WITH LVC MODELS ONLY



FOR USE WITH GPE MODELS ONLY

# REPLACEMENT PARTS

Ref.	No.	Part No.	Description
*	n	736827	LEFT TILT BLADE GUARD COMP, CONST OF:
*		422-40-354-0003	LEFT TILT BLADE GUARD ASSY, CONST OF:
200		1086388	PUSH NUT CAP
201		1087811	PIN
202		422-40-354-0004	LEFT TILT BLADE GUARD, INCL:
203		422-40-754-0002	WARNING LABEL
204		422-16-047-0001	KICK BACK FINGER
205		1086353	SPRING
206		1086387	PUSH NUT
207		1086337	PIVOT BRACKET
208		422-04-071-0007	PIN
209		905-01-010-6729	5/32" X 11/16" SPRING PIN
210		422-04-086-0002	SPLITTER W/BUSHING
211		904-01-010-1620	5/16" FLAT WASHER
212		901-01-060-0649	5/16-18 X 1" HEX HD SCREW
213		422-03-072-0001	PLATE
214		901-01-060-0649	5/16-18 X 1" HEX HD SCREW
215		901-01-060-0649	5/16-18 X 1" HEX HD SCREW
216		904-02-010-1703	5/16" LOCK WASHER
217		904-01-010-1620	5/16" FLAT WASHER
218		422-04-014-0018	BRACKET
219		422-04-014-0019	BRACKET
220		904-01-010-1620	5/16" FLAT WASHER
221		904-02-010-1703	5/16" LOCK WASHER
222		901-01-060-0649	5/16-18 X 1" HEX HD SCREW
223		422-04-089-0003	SUPPORT ROD
224		904-03-020-1751	5/8" INT TOOTH WASHER
225		902-01-020-1226	5/8-18 JAM NUT
226		422-40-014-0005	SPLITTER MOUNTING BRACKET
228		901-03-013-1698	5/16-18 X 2" HEX SOC HD SCREW
229		904-01-010-1620	5/16" FLAT WASHER
230		901-03-010-0757	5/16-18 X 3/4" HEX SOC HD SCREW
250		1340100	SWITCH COVER ASSY
251		901-02-010-0567	#06-32 X 1/4" ROUND HD SCREW
252		402-07-104-5007	SPACER
253		438-01-017-0101	MAGNETIC SWITCH
254		402-07-111-5002	STUD
255		438-01-001-0036	SWITCH BOX
256		422-40-014-0006	MOUNTING BRACKET-LVC
257		901-05-163-1126	#08-32 X 5/16" PAN HD SCREW
258		901-03-033-1881	5/16-18 X 1 1/4" FLAT HD SCREW
259		904-01-010-1620	FLAT WASHER
260		902-01-010-1300	5/16-18 HEX NUT
261		422-04-725-0003	MTG. HARDWARE PACK
275		901-02-453-1123	#10-32 X 1/2" PAN HD SCREW
276		438-01-016-0199	STARTER,GPE,1PH,230V, INCL:
276A		438-01-016-0200	COVER
277		438-01-004-0007	CORD CLAMP
278		438-01-011-0054	INSULATOR SLEEVE
279		902-01-293-1513	#10-32 KEPS NUT
280		422-40-014-0007	MOUNTING BRACKET-GPE
282		901-03-033-1881	5/16-18 X 1 1/4" FLAT HD SCREW
283		904-01-010-1620	FLAT WASHER
284		902-01-010-1300	5/16-18 HEX NUT
285		422-40-628-0004	MTG. HARDWARE PACK
*			NOT SHOWN ASSEMBLED

---

## STANDARD SAFETY EQUIPMENT

In order to promote tool safety, Delta Machinery strictly enforces the policy of repairing or replacing any damaged or missing standard safety equipment on machines presented to Delta Authorized Service Centers for service/repairs. Any product that is presented to a Delta Authorized Service Centers for repairs which contains missing or damaged standard safety equipment will have that equipment repaired or replaced and the customer will be charged for any such service/repairs. Customers can avoid such charges only if the missing safety component is supplied to the service center at the time of repair.

*This parts list is provided to aid in obtaining service parts. Copies of the instruction and maintenance literature can be obtained through the Delta Technical Publications Department or through your service outlet.*