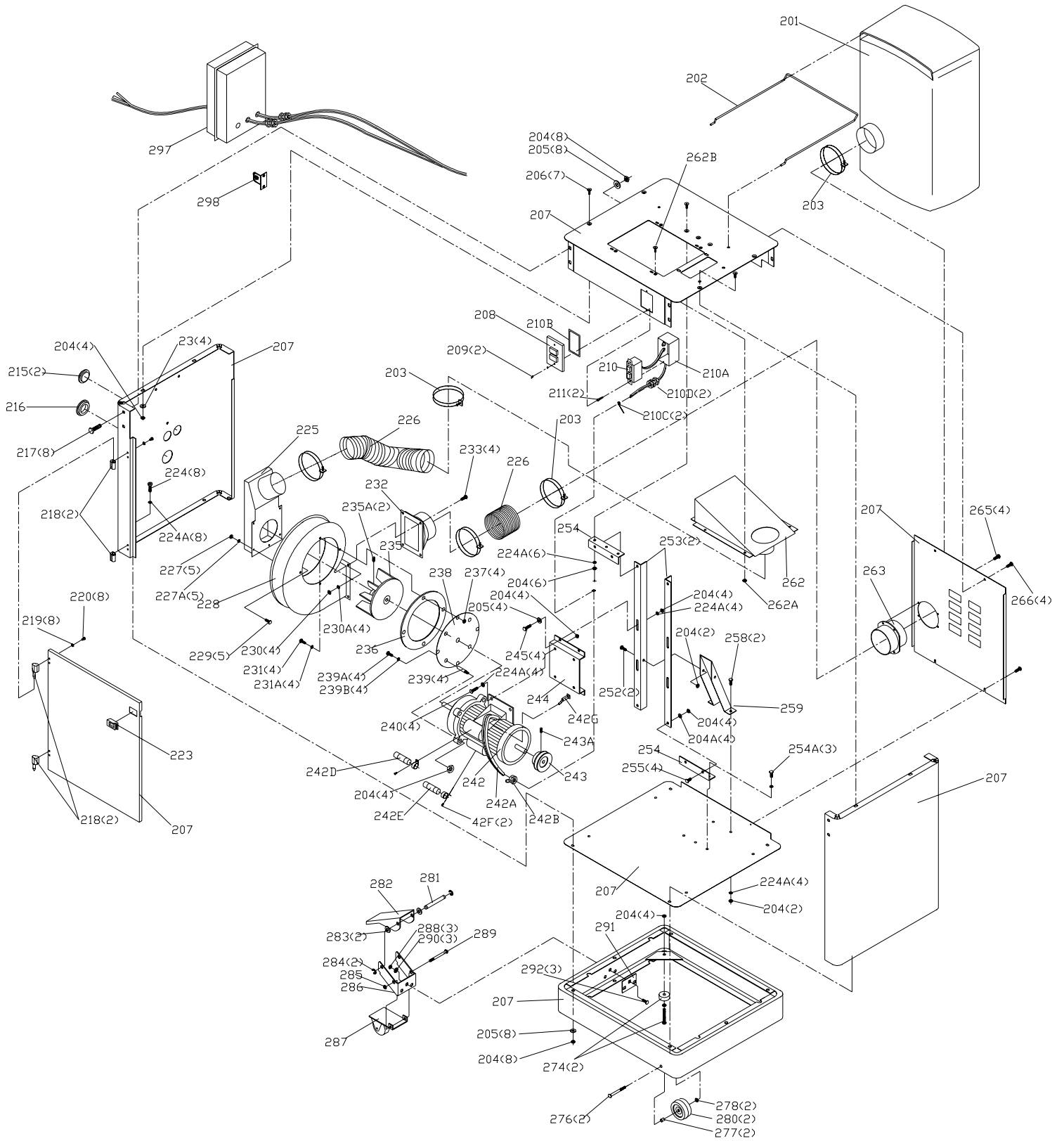


REPLACEMENT PARTS

Ref.	Part No.	Description	Ref.	Part No.	Description
2	SEE CATALOG	80G SANDING DISK	94	910179	RETAINING RING
4	416-02-339-0001	DISK ASS'Y	95	406-12-074-0001	BRASS PLUG
5	901-03-030-0761	1/4-20 X 1/2" FLAT HD SOC SCREW	97	901-03-043-1191	5/16-18 X 1/2" BUTTON HEAD SCREW
7	911531	5/16-18 X 1/2 HEX SOCKET SET SCREW	98	909100	KNOB
8	909076	DISK TABLE	99	909101	CAM SHAFT
8A	406-12-132-0002	SCALE	100	904-01-033-1306	FLAT WASHER
8B	901-02-010-0567	6-32 X 1/4" R H SCREW	101	928-05-013-1693	WAVE WASHER
9	910983	TRUNNION ASS'Y	102	913127	COTTER PIN
10	951-02-010-7820	SCALE	103	909102	SLEEVE
12	416-02-095-0001	TRUNNION	104	909935	LEVER
13	901-01-060-0603	1/4-20 X 7/8" HEX HEAD SCREW	105	928-01-023-1644	SPRING
14	904-01-010-1603	FLAT WASHER	106	902-01-213-1635	3/8-16 LOCK NUT
15	1350293	LOCK WASHER	107	910990	UPPER IDLER PULLEY ASS'Y INCL.: REF. 109, 110, 111, & 112
17	911473	ACCESS COVER			
18	901-03-043-1713	8-32 X 1/2 BUTTON HEAD SCREW	109	909105	UPPER IDLER SHAFT
19	911369	5/16-18 X 3 3/4" HEX SCREW	110	913128	WAVE WASHER
21	904-02-010-1703	LOCK WASHER	111	910181	RETAINING RING
22	913174	10-24 X 1 1/8" SOCKET HEAD SCREW	112	1086894	BEARING
23	902-01-223-1171	10-24 NUT	113	909104	IDLER SHAFT SUPPORT
24	901-04-140-9408	10-24X 0.5" HEX SOCKET SET SCREW	114	905-01-010-6715	PIN
25	909079	DISK HOUSING FRONT COVER	115	909106	UPPER IDLER COVER
26	901-03-043-1663	10-32 X 3/8" BUTTON HEAD SCREW	116	909107	KNOB
27	430-04-104-0010	FLAT WASHER	117	909108	STUD
28	420-01-111-0003	STUD 7/16 X 2.94"	118	911307	BACK PANEL
29	910984	CLAMP ASS'Y	120	909107	KNOB
31	422-04-075-5001	POINTER	121	909108	STUD
32	901-02-010-0502	1/4-20 X 1/4" ROUND HEAD SCREW	122	913129	08-32 X 3/8" BUTTON HEAD SCR
33	904-01-031-2925	FLAT WASHER	123	913149	DUST BOX
34	928-01-021-4125	SPRING	124	913220	10-24 X 3/8 BUTTON HEAD SCREW
35	909080	KNOB	125	909115	10-32 X 3/8 ROUND HEAD SCREW
36	909081	DRIVE SHAFT	126	909113	WASHER
37	909082	DRIVE SHAFT KEY	127	912923	DUST PORT COVER PLATE
38	406-03-130-0004	DRIVE PULLEY ASS'Y, INCL., REF. 7	129	909116	END COVER
40	913152	BELT	130	901-05-130-6101	10-32 X 3/4 ROUND HEAD SCREW
41	920-04-020-5348	BEARING	131	909113	WASHER
42	910176	RETAINING RING	132	901-03-040-8015	1/4-20 X 1/2" BUTTON HD SCREW
43	910177	RETAINING RING	133	406-12-031-0006	SHAFT COVER
44	910178	RETAINING RING	134	912922	COVER
45A	911953	LOWER IDLER ASS'Y	135	913129	10-32 X 3/4" BUTTON HEAD SCREW
48	406-12-111-0004	STUD	136	908996	ROTATION LABEL
49	904-01-010-1605	FLAT WASHER	137	913186	WAVE WASHER
50	902-01-040-1026	3/8-16 HEX NUT	138	912936	SPACER
51	909935	LEVER	139	908994	DIRECTIONAL LABEL
52	928-01-023-1644	SPRING	140	910480	2MM X 6MM RIVET
53	902-01-213-1635	3/8-16 LOCK NUT	141	908993	WARNING LABEL
54	909088	5/16-18 X 1/2 BOLT	142	913376	BLOCK ASSY.
55	904-02-010-1703	LOCK WASHER	143	909113	WASHER
56	910987	TRUNNION ASS'Y, INCL., REF. 41 & 42	144	406-12-071-0001	SANDING PIN
59	1340859	5/16" -18 X 2.5" HEX BOLT	201	912969	COLLECTION BAG
60	904-02-010-1703	LOCK WASHER	202	912970	BAG HANGER
61	909092	WASHER	203	1342476	4" HOSE CLAMP
63	905-01-010-2712	.25 X 1.25 SPRING PIN			
65	SEE CATALOG	100G BELT			
67	910988	DUST DIVERTER ASS'Y			
70	901-03-010-3331	10-24 X .75 SCREW			
71	902-01-223-1177	10-24 NUT			
73	909095	BELT TABLE			
74	910989	TRUNNION ASS'Y INCL.: REF. 75, 76, 77, 78 & 79			
75	418-03-055-0001	GUIDE			
76	1231522	5/32 X 1/2 PIN			
77	911371	1/4-28 X 1" HEX SOC SET SCREW			
78	1087397	POINTER			
79	901-02-010-0561	10-32 X 3/8 ROUND HEAD SCREW			
80	909096	5/16-18 X 7/8 HEX HEAD SCREW			
81	913175	WASHER			
82	904-02-010-1703	LOCK WASHER			
83	909097	STUD			
85	902-01-040-1026	3/8-16 HEX NUT			
86	909935	LEVER			
87	928-01-023-1644	SPRING			
88	902-01-213-1635	3/8-16 LOCK NUT			
89	951-02-010-7822	SCALE			
90	910480	2MM X 6MM R HD RIVET			
91	905-01-010-2705	SPRING PIN			
92	418-03-088-0001	STOP BLOCK			
93	909098	ECCENTRIC			



REPLACEMENT PARTS

Ref.	No.	Part No.	Description	Ref.	No.	Part No.	Description
	204	1350409	5/16" HEX NUT		262	912981	INLET PORT
	205	904-01-011-5747	FLAT WASHER		262A	1350284	1/4" HEX NUT
	206	901-02-030-5720	5/16"X1/2" FLAT HEAD SCREW		262B	901-02-030-0403	1/4"X5/8" FLAT HEAD SCREW
	207	913307	CABINET ASS'Y		263	912982	FLANGE
	208	1340100	SWITCH PANEL		265	1310547	M4.2X12MM PAN HD SCREW
	209	901-02-010-0588	6X3/4" ROUND HD SCREW		266	901-02-010-0525	SCREW
	210	1340095	SWITCH, MODEL 52-625		274	436-02-048-0009	LEVELING SCREW
		438-01-017-0101	SWITCH , MODEL 52-626		276	901-01-060-3121	3/8" X 3" HEX HD SCREW
210A		438-01-001-0060	SWITCH BOX		277	913209	3/8" X 15 CASTER AXLE
210B		422-04-116-0001	SWITCH GASKET		278	1350279	3/8" HEX NUT
210C		438-01-004-0007	CORD CLAMP		280	913210	CASTER
210D		438-01-011-0054	INSULATOR		281	436-02-071-0001	1/2"X4" PIN
211		913229	SWITCHX HEX SCREW		282	436-02-067-0011	FOOT LEVER
215		438-01-011-0065	HOLE PLUG		283	904-01-010-1636	FLAT WASHER
216		438-01-011-0020	BUSHING		284	904-15-012-0052	RETAINING RING
217		901-11-023-1476	5/16-18 X 5/8" SCREW		285	902-01-210-1072	5/16"LOCK NUT
218		912971	HINGE		286	905977	BRACKET
219		1320101	WASHER		287	436-02-400-0005	CASTER ASSEMBLY
220		1310162	M5 X1/2" ROUND HD SCREW		288	902-01-010-5900	3/8"HEX NUT
223		912973	DOOR LATCH		289	901-01-063-1537	5/16"X4"X1" HEX HD SCREW
224		901-03-010-0750	5/16 X 1 SCREW		290	904-01-010-1607	FLAT WASHER
224A		904-02-010-1703	LOCK WASHER		291	905973	SUPPORT PLATE
225		912974	BLOWER CONNECTOR		292	901-11-020-0816	3/8"X1" CARRIAGE SCREW
226		912975	HOSE		297	500-84-102-0073	LVC, 52-626 ONLY
227		902-01-223-1171	10-24 NUT		298	500-84-102-0073	HEATERS FOR LVC, 52-626 ONLY
227A		1350820	LOCK WASHER				
228		912976	BLOWER				
229		901-02-010-0525	SCREW				
230		1350284	1/4" HEX NUT				
230A		1350293	LOCK WASHER				
231		1350295	1/4"X1/2" HEX HD SCREW				
231A		1350293	LOCK WASHER				
232		912984	OUTLET				
233		1350295	1/4"X1/2" HEX HD SCREW				
235		912985	IMPELLER				
235A		911531	5/16 X 3/8 SET SCREW				
236		912986	GASKET				
237		1350284	1/4" HEX NUT				
238		912987	BLOWER MOUNTING PLATE				
239		912988	MOTOR SUPPORT				
239A		1350295	1/4"X1/2" HEX HD SCREW				
239B		1350293	LOCK WASHER				
240		901-01-060-0607	5/16"X3/4" HEX HD SCREW				
242		913232	MOTOR 1.5 HP, 200-230/480VAC, 52-626				
		912989	MOTOR 1.5 HP, 7.5A/240VAC, 52-625				
242A		1347574	MOTOR CABLE				
242D		913308	35UF/30VA CAPACITOR, 52-625				
242E		913312	200MF/125VA CAPACITOR, 52-625				
243		41-033	PULLEY				
243A		911531	5/16 X 3/8 SET SCREW				
244		912977	MOTOR BASE				
245		901-01-060-0607	5/16"X3/4" HEX HD SCREW				
252		901-01-060-0607	5/16"X3/4" HEX HD SCREW				
253		912978	MOTOR BASE FRAME				
254		912979	MOTOR BASE FRAME				
254A		901-01-060-0607	5/16"X3/4" HEX HD SCREW				
255		901-01-060-0607	5/16"X3/4" HEX HD SCREW				
258		901-01-060-0607	5/16"X3/4" HEX HD SCREW				
259		912980	MOTOR BASE FRAME				

STANDARD SAFETY EQUIPMENT

In order to promote tool safety, Delta Machinery strictly enforces the policy of repairing or replacing any damaged or missing standard safety equipment on machines presented to Delta Authorized Service Centers for service/repairs. Any product that is presented to a Delta Authorized Service Centers for repairs which contains missing or damaged standard safety equipment will have that equipment repaired or replaced and the customer will be charged for any such service/repairs. Customers can avoid such charges only if the missing safety component is supplied to the service center at the time of repair.