

REPLACEMENT PARTS

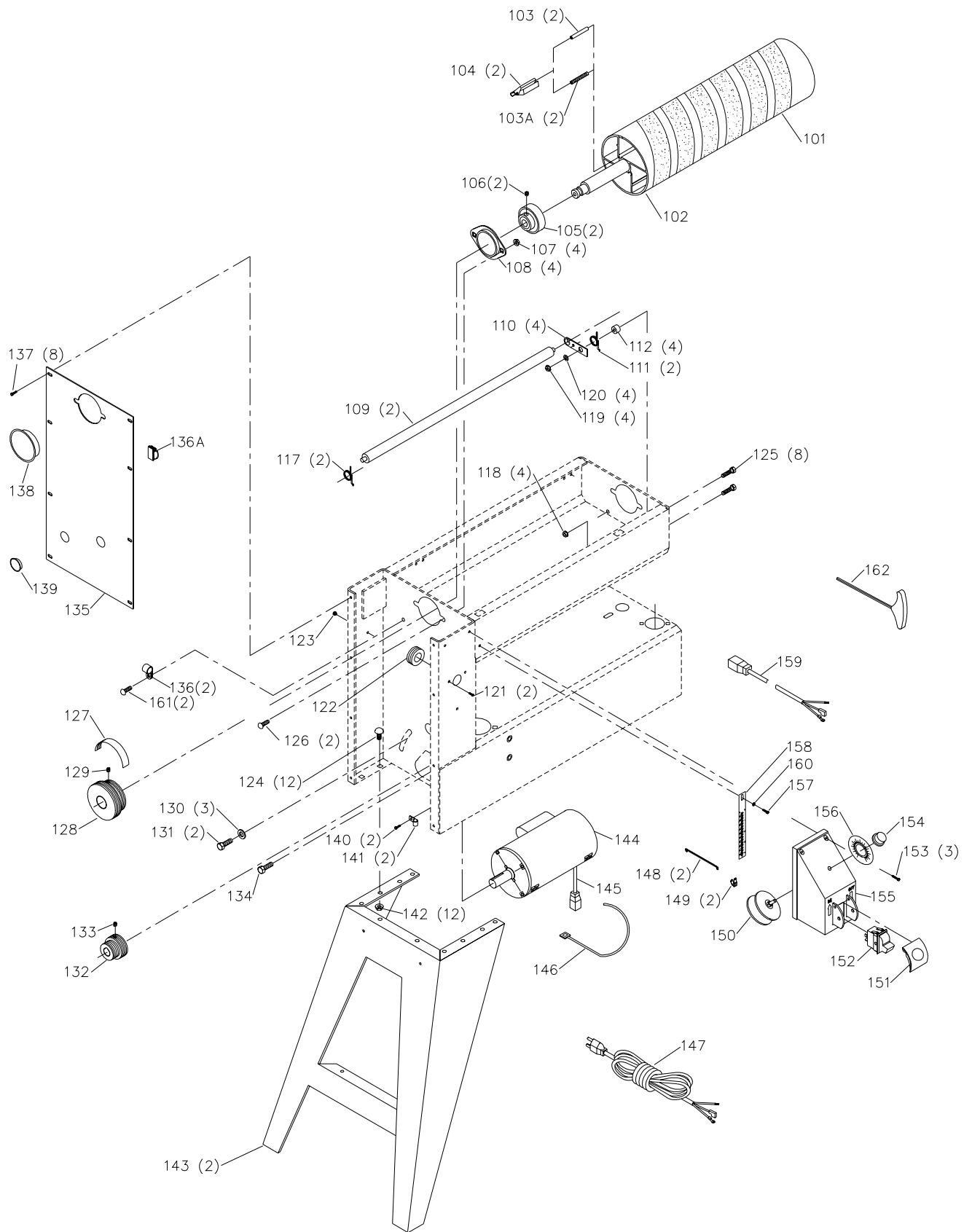
Ref. No.	Part No.	Description	Ref. No.	Part No.	Description
1	406-13-031-0003	COVER	43	902-01-503-1514	5/16-18 FLANGE NUT
2	406-13-122-0005	SPRING CLIP	44	406-13-103-0003	FLANGE (LARGE)
3	901-05-163-1229	10-16 X 1/2" PAN HD SCREW	45	406-13-139-0002	SPHERICAL BEARING
4	406-13-072-0004	STATIONARY ROLLER PLATE	45A	904-07-010-5554	FIBER WASHER
5	406-13-080-0006	DRIVE ROLLER	46	406-13-103-0003	FLANGE (LARGE)
6	901-04-190-0203	1/4-20 X 3/8" HEX SOC SET SCREW	47	406-13-400-0003	7" DIA. HANDWHEEL ASSY - , 31-255X
7	920-75-103-1823	BUSHING		406-13-400-0002	7" DIA. HANDWHEEL ASSY - 31-250 CMO
8	901-06-443-1806	10-24 X 1/2" HEX HD SCREW		406-13-400-0001	5" DIA. HANDWHEEL ASSY - 31-250 EMO
9	901-03-010-0224	10-32 X 1/2" HEX SOC HD SCREW	48	901-04-140-0252	5/16-18 X 5/16" HEX SOC SET SCREW
10	406-13-013-0001	MOTOR MOUNT	49	422-39-139-0001	BEARING
11	901-01-063-1869	3/8-16 X 1/2" HEX HD SCREW, NOTE A	50	406-13-014-0011	HANDWHEEL BRACKET
	901-01-060-3104	3/8-16 X 1/2" HEX HD SCREW, NOTE B	51	901-06-163-1903	10-24 X 1/2" HEX HD SCREW
12	n 911611	MOTOR, 31-250 T3	52	426-03-388-0001	COLLAR ASSY, INCL:
	62-601	MOTOR, 31-250 T1 & T2, 31-255X, INCL.:	53	901-04-150-0208	1/4-20 X 1/4" HEX SOC SET SCREW
12A	438-01-302-0705	CABLE ASSY., AFTER S/N 01A-11775	54	406-13-406-0001	GEARSHAFT ASSY, INCL:
	438-01-302-0694	CABLE ASSY., BEFORE S/N 01A-11776	55	406-13-051-0006	GEAR
12B	n 912007	BRUSH CAP, 31-250 T3	56	905-01-010-2735	1/8" X 1 1/4" SPRING PIN
	438-02-041-0011	BRUSH CAP, 31-250 T1 & T2, 31-255X	57	406-13-014-0013	HANDWHEEL BRACKET
12C	438-02-040-0005	SPRING, 31-250 T1 & T2, 31-255X	58	904-01-010-1620	FLAT WASHER
12D	n 912006	BRUSH & SPRING, 31-250 T3	59	902-01-133-1529	1/4-20 FLANGE NUT
	438-02-007-0028	BRUSH, 31-250 T1 & T2, 31-255X	60	901-03-010-0768	10-24 X 1 1/4" HEX SOC HD SCREW
14	901-03-010-0755	1/4-20 X 3/4" HEX SOC HD SCREW	61	406-13-051-0007	MITER GEAR
15	904-02-020-1702	1/4" LOCK WASHER, NOTE D	62	406-13-051-0004	TIMING GEAR
16	901-03-010-0750	5/16-18 X 1" HEX SOC HD SCREW - CMO	63	901-11-020-0834	5/16-18 X 3/4" CARRIAGE HD SCREW
	901-03-010-0757	5/16-18 X 3/4" HEX SOC HD SCREW - EMO	64	406-13-133-0005	DRIVE BELT, 31-250 T3
17	904-02-010-1703	5/16" LOCK WASHER		406-13-133-0003	DRIVE BELT, 31-250 T1 & T2, 31-255X
18	406-13-104-0005	TABLE SPACER, NOTE C	65	901-01-060-0602	5/16-18 X 1 1/4" HEX HD SCREW
19	901-06-163-1903	10-32 X 3/8" HEX SOC HD SCREW	66	904-01-010-1604	FLAT WASHER
20	406-13-075-0001	POINTER	67	406-13-080-0009	ROLLER
21	406-13-391-0001	TABLE	68	406-13-104-0003	SPACER
22	928-05-013-1681	WAVE WASHER	69	406-13-051-0004	TIMING GEAR
23	406-13-080-0002	IDLER ROLLER	70	920-76-033-1822	THRUST WASHER
24	31-814	CONVEYOR BELT	71	901-11-023-1497	1/4-20 X 5/8" CARRIAGE HD SCREW
25	920-75-103-1829	BUSHING	72	901-03-030-8013	1/4-20 X 3/4" FLAT HD SCREW
26	n 912004	BRACKET, 31-250 T3, INCL.: REF. 28	73	902-01-503-1514	5/16-18 FLANGE NUT
	406-13-314-0001	BRACKET, 31-250 T1 & T2, 31-255X	74	406-13-349-0006	FRAME, INCL., 31-250 T2 & T3, 31-255X
27	901-04-080-0109	1/4-20 X 1 1/2" HEX SOC SET SCREW		406-13-349-0004	FRAME, LATE 31-250 T1, NOTE A INCL:
28	n 908631	SPACER, 31-250 T3		406-13-349-0002	FRAME, EARLY 31-250 T1, NOTE B INCL:
	406-13-104-0002	SPACER, 31-250 T1 & T2, 31-255X	75	424-12-754-0007	NAMEPLATE, NOTE B
29	901-02-123-1870	1/4-20 X 5/8" TRUSS HD SCREW, NOTE A	76	406-13-754-0011	HEIGHT / DIR. LABEL, NOTE A
	901-02-120-7504	1/4-20 X 5/8" TRUSS HD SCREW, NOTE B	77	406-13-754-0010	HEIGHT / DIR. LABEL, NOTE B
				406-13-754-0002	WARNING LABEL, NOTE A
				406-13-754-0002	WARNING LABEL, NOTE B
30	406-13-112-0005	ELEVATING SCREW	78	406-13-754-0014	NAMEPLATE, INDUSTRIAL, NOTE D
31	902-01-210-1036	3/4-16 LOCK NUT		406-13-754-0015	NAMEPLATE, 31-255X
33	406-13-628-0001	THRUST BEARING SERVICE KIT		406-13-754-0012	NAMEPLATE, NOTE A
36	902-01-293-1240	1/4-20 KEPS NUT		406-13-754-0003	NAMEPLATE, NOTE B
36A	902-01-503-1865	5/16-18 HEX NUT	79	406-13-059-0001	HINGE
37	406-13-103-0005	FLANGE (SMALL)	80	901-06-163-1903	10-24 X 1/2" HEX HD SCREW
38	406-13-017-0003	SPHERICAL BUSHING	81	406-13-071-0003	HINGE PIN
39	406-13-103-0005	FLANGE (SMALL)	82	904-10-031-3810	WASHER
40	406-13-004-0002	TABLE SUPPORT BAR - EMO	84	438-01-004-0070	CABLE TIE
40A	406-13-072-0006	SUPPORT PLATE, 31-250 T2 & T3, 31-255X	85	406-13-088-0001	STOP POST, 31-250 T2 & T3, 31-255X
	406-13-072-0005	SUPPORT PLATE, 31-250 T1	86	406-13-725-0006	HDWE PACK, 31-250 T3
41	406-13-112-0005	ELEVATING SCREW		406-13-725-0004	HDWE PACK, 31-250 T1 & T2, 31-255X
42	902-01-020-9101	3/4-16 LOCK NUT	87	n 911956	WARNING LABEL, 31-250 T3 ONLY

NOTE A: S/A'S BEGINNING WITH 01E AMD ABOVE

NOTE B: S/A'S BEGINNING WITH 01D AMD BELOW

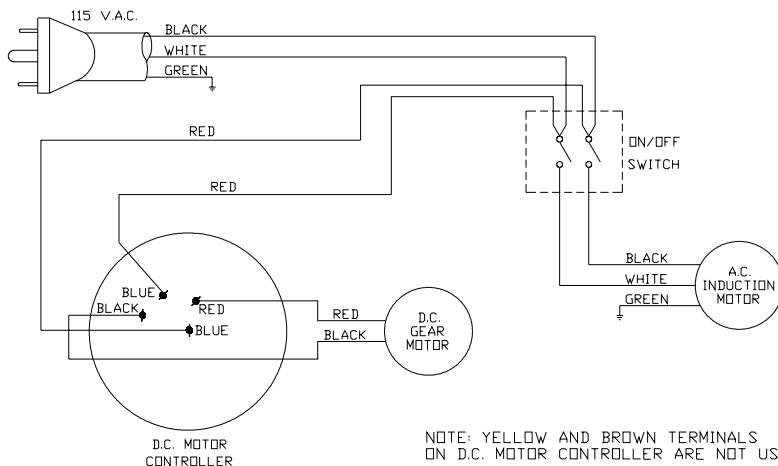
NOTE C: THIS SPACER WAS ONLY USED FROM SERIAL NO. 01E31623 TO 01H45848 OF TYPE 1.

NOTE D: INDUSTRIAL UNITS NAMEPLATE SAY "DELTA INDUSTRIAL", NON-INDUSTRIAL UNITS NAMEPLATE SAY "DELTA"



REPLACEMENT PARTS

Ref.	No.	Part No.	Description	Ref.	No.	Part No.	Description
	101	OPTIONAL	SANDING BELT		138	438-01-011-0075	PLUG
	102	406-13-362-0001	DRUM ASSY. INCL:		139	438-01-011-0064	PLUG
	103	905-01-103-1900	1/4" X 1 1/2" SPRING PIN - CMO		140	901-06-163-1903	10-24 X 1/2" HEX HD SCREW
	103A	406-13-071-0005	1/4" X 1 1/2" SOLID KNURLED PIN - EMO		141	438-01-004-0015	CABLE CLAMP 5/16"
	104	406-13-327-0001	CLIP ASSY		142	902-01-503-1514	5/16-18 FLANGE NUT
	105	406-13-139-0001	SPHERICAL BEARING, INCL:		143	406-13-066-0002	LEG
	106	901-04-151-9199	1/4-28 X 1/4" HEX SOC SET SCREW		144	n 911901	MOTOR, 1-1/2HP, 1PH, 115V, 31-250 T3, INCL:
	107	902-01-503-1514	5/16-18 FLANGE NUT			62-700	MOTOR, 1-1/2HP, 1PH, 115V, 31-250 T1 & T2, 31-255X INCL:
	108	406-13-103-0002	DRUM FLANGE				CORD W/MALE CONNECT
	109	406-13-080-0008	FRONT PRESSURE ROLLER				CABLE TIE
	110	406-13-135-0001	LINK		145	438-01-302-0661	CORD SET
	111	406-13-122-0003	R.H. SPRING		146	438-01-004-0054	JUMPER WIRE
	112	406-13-017-0001	BUSHING		147	438-01-302-0672	TERMINAL
	117	406-13-122-0004	L.H. SPRING		148	438-01-320-0259	D.C. SPEED CONTROLLER, 31-250 T3, INCL.: REF. 154, 155, & 156
	118	902-01-133-1529	1/4-20 FLANGE NUT		149	438-01-018-0049	D.C. SPEED CONTROLLER,
	119	902-01-293-1240	1/4-20 KEPS NUT		150	n 911609	31-250 T1 & T2, 31-255X
	120	904-01-010-1614	FLAT WASHER			406-13-626-0001	SWITCH ACTUATOR
	121	901-05-473-1655	08-32 X 5/16" SCREW				SWITCH
	122	438-01-011-0076	GROMMET		151	422-39-067-0001	10-24 X 3/4" HEX HD SCREW
	123	438-01-004-0105	HEYCO CLAMP		152	438-01-017-0206	KNOB
	124	901-11-023-1476	5/16-18 X 5/8" CARRIAGE HD SCREW		153	901-06-163-1484	SWITCH BOX ASSY, T3, INCL:
	125	901-01-063-1871	1/4-20 X 1" HEX HD SCREW, NOTE A		154	406-13-138-0002	SWITCH BOX ASSY, T1 & T2, INCL:
		901-01-060-0623	1/4-20 X 1" HEX HD SCREW, NOTE B		155	n 911610	VARIABLE SPEED LABEL
	126	901-11-020-0834	5/16-18 X 3/4" CARRIAGE HD SCREW		156	406-13-313-0001	10-24 X 1/2" HEX HD SCREW
	127	406-13-133-0004	POLY V-BELT		157	406-13-754-0004	SCALE
	128	406-13-430-0002	DRIVEN PULLEY ASSY, INCL:		158	901-06-443-1806	FEMALE DISCONNECT
	129	901-04-190-0203	1/4-20 X 3/8" HEX SOC SET SCREW		159	438-01-302-0671	WASHER, NOTE A
	130	904-01-010-1605	3/8" FLAT WASHER		160	904-01-013-1868	WASHER, NOTE B
	131	901-01-060-0640	3/8-16 X 3/4" HEX HD SCREW		161	901-06-163-1903	10-24 X .50" SCREW
	132	406-13-430-0001	DRIVER PULLEY ASSY, INCL:		162	955-03-023-1901	WRENCH, 31-250 T2 & T3, 31-255X
	133	901-04-190-0203	1/4-20 X 3/8" HEX SOC SET SCREW				EMO=EARLY MODELS ONLY
	134	901-01-063-1830	3/8-16 X 3/4" NYLOK HEX HD SCREW				CMO=CURRENT MODELS
	135	406-13-031-0005	COVER, NOTE A				
		406-13-031-0004	COVER, NOTE B				
	136	438-01-004-0015	CORD CLAMP - CMO				
	136A	438-01-004-0104	CORD CLAMP, Stick On - EMO				
	137	901-06-163-1903	10-24 X 1/2" HEX HD SCREW				



STANDARD SAFETY EQUIPMENT

In order to promote tool safety, Delta Machinery strictly enforces the policy of repairing or replacing any damaged or missing standard safety equipment on machines presented to Delta Authorized Service Centers for service/repairs. Any product which is presented to a Delta Authorized Service Centers for repairs which contains missing or damaged standard safety equipment will have that equipment repaired or replaced and the customer will be charged for any such service/repairs. Customers can avoid such charges only if the missing safety component is supplied to the service center at the time of repair.

This parts list is provided to aid in obtaining service parts. Copies of the instruction and maintenance literature can be obtained through the Delta Technical Publications Department or through your service outlet.