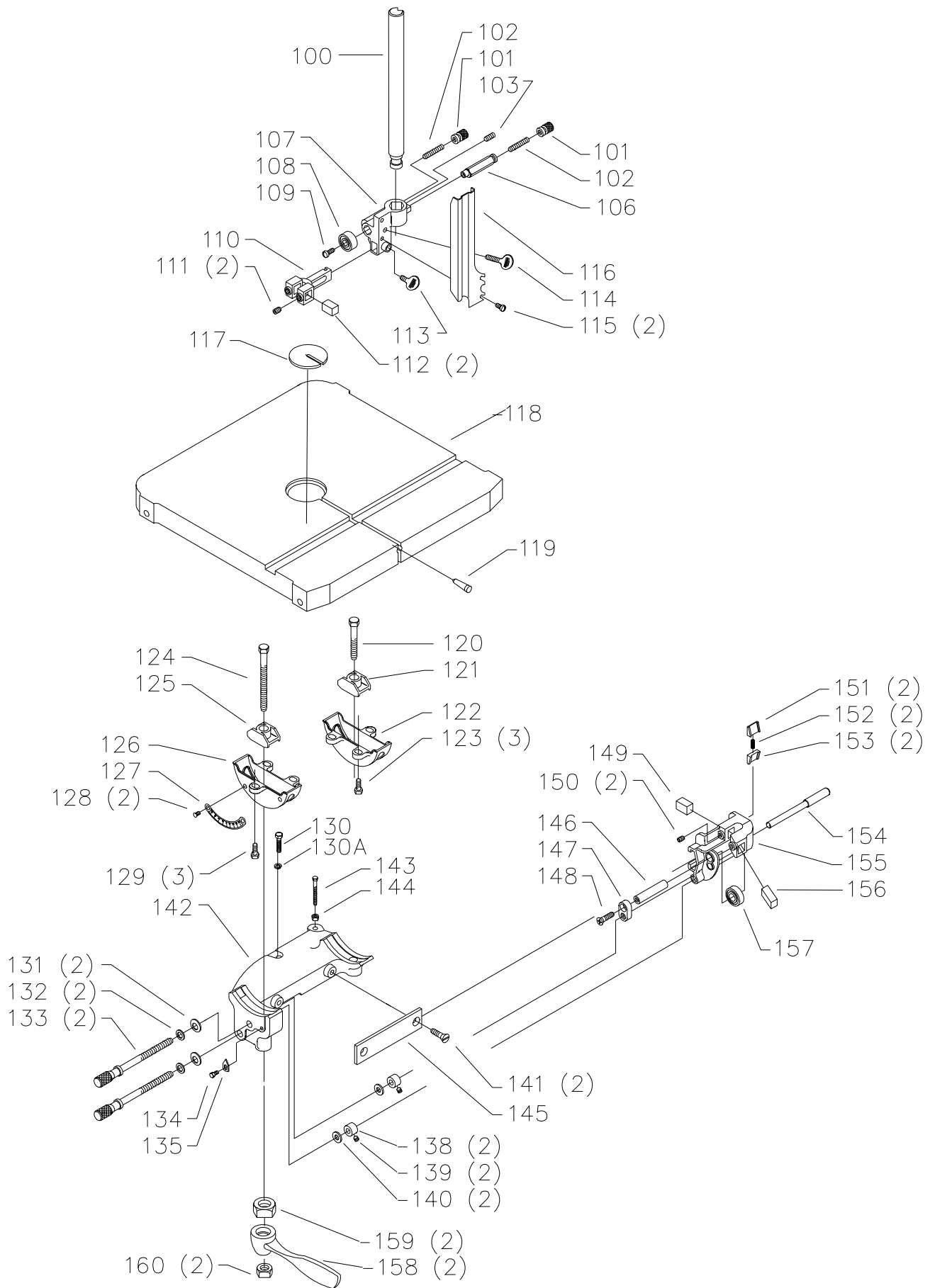


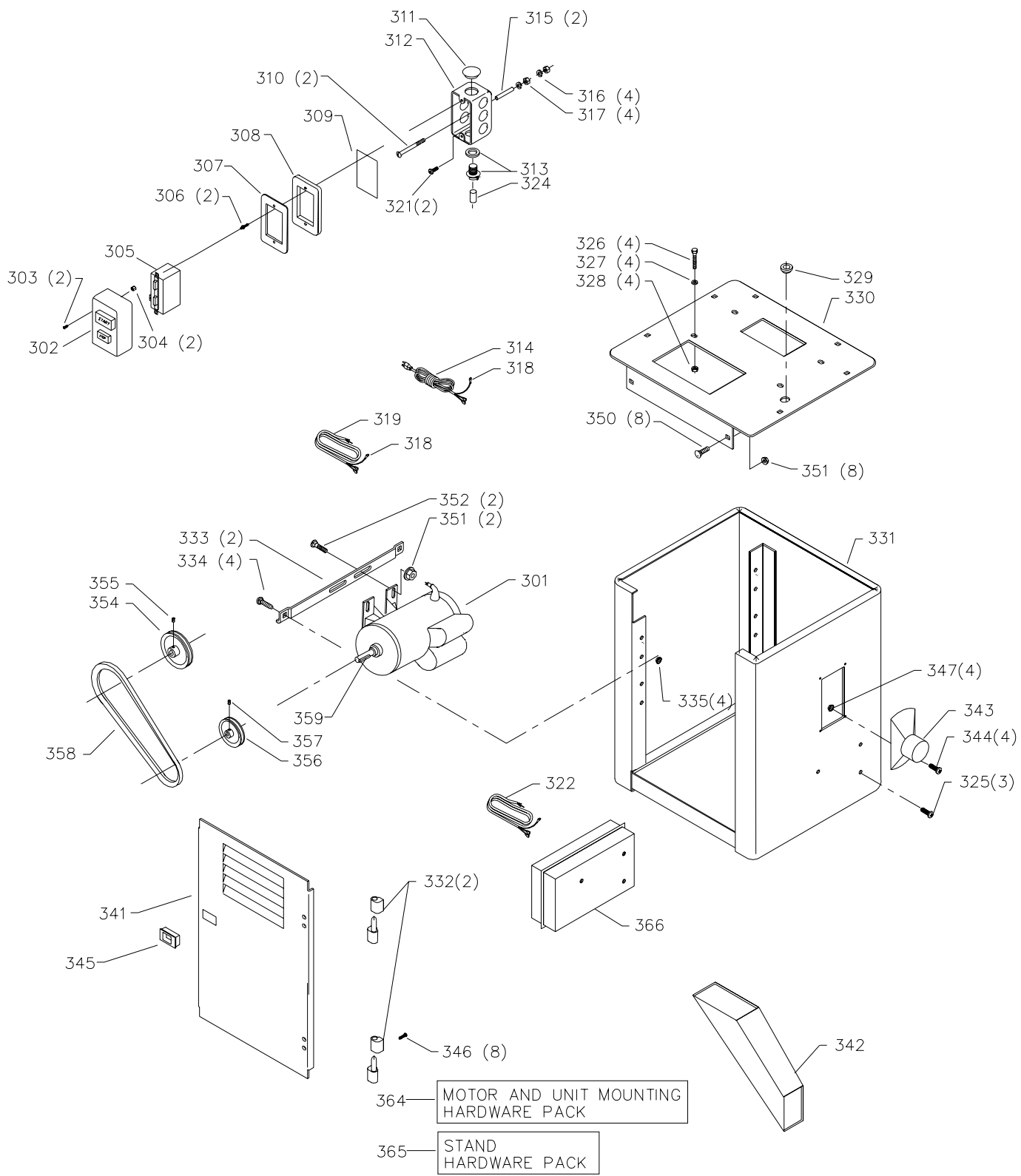
# REPLACEMENT PARTS

| <u>Ref.</u> | <u>Part No.</u> | <u>Description</u>                      | <u>Ref.</u> | <u>Part No.</u> | <u>Description</u>                   |
|-------------|-----------------|---|-------------|-----------------|--------------------------------------|
| 1           | 426-02-354-0049 | UPPER GUARD                             | 58          | 426-02-111-0012 | HEX STUD                             |
| 2           | 406-03-060-0002 | KNOB, 28-248, 28-248F, 28-248G          | 59          | 426-02-122-0003 | DOOR CATCH                           |
|             | 426-02-060-0001 | KNOB, 28-475X                           | 60          | 901-02-051-2860 | #08-32 X 1/4" FILL HD SCREW          |
| 3           | 426-02-071-0002 | DOOR LOCK STUD                          | 61          | 426-02-106-0010 | DRIVE SHAFT                          |
| 4           | 902-01-293-1513 | #10-32 KEPS NUT                         | 62          | 927-03-010-2650 | 1 3/8" KEY                           |
| 5           | 902-01-020-1227 | 1/2-20 JAM NUT                          | 63          | 927-01-100-2603 | KEY                                  |
| 6           | 426-03-400-0008 | UPPER WHEEL ASSY, INCL:                 | 64          | 920-04-020-5348 | BEARING                              |
| 7           | 426-02-094-0003 | TIRE                                    | 65          | 904-01-031-4982 | FLAT WASHER                          |
| 8           | 920-04-010-7273 | BEARING                                 | 66          | 426-03-400-0010 | WHEEL, INCL:                         |
| 10          | 426-02-104-0006 | SPACER                                  | 67          | 426-02-094-0003 | TIRE                                 |
| 11          | 901-02-012-1910 | 3/8-16 X 2 1/4" ROUND HD SCREW          | 68          | 902-07-030-7171 | NUT                                  |
| 12          | 904-01-010-1615 | FLAT WASHER                             | 69          | 426-02-354-0055 | GUARD ASSY , INCL:                   |
| 13          | 426-02-054-0017 | BLADE GUARD                             | 69A         | 426-02-754-0012 | WARNING LABEL ,                      |
| 14          | 901-02-763-1527 | 5/16-18 X 1/2" HEX HD SCREW             | 69B         | 426-02-754-0011 | NAME PLATE, 28-248, 28-248F, 28-248G |
| 15          | 904-01-010-1615 | FLAT WASHER                             |             | 426-02-754-0013 | NAME PLATE, 28-475X                  |
| 16          | 426-02-089-0010 | UPPER FRAME , Incl.: Ref. 86A, 87, & 88 | 70          | 901-06-143-1786 | 1/4-20 X 1/2" HEX WASHER HD SCREW    |
| 17          | 426-02-111-0006 | STUD                                    | 71          | 901-02-123-1912 | 1/4 X20 X 5/8 SCREW                  |
| 18          | 426-02-354-0048 | GUARD                                   | 72          | 406-13-104-0002 | SPACER                               |
| 19          | 902-01-133-1529 | 1/4-20 FLANGE NUT                       | 73          | 426-02-071-0002 | STUD                                 |
| 20          | 901-02-763-1527 | 5/16-18 X 1/2" HEX HD SCREW             | 74          | 902-01-293-1513 | #10-32 KEPS NUT                      |
| 21          | 904-01-010-1620 | FLAT WASHER                             | 75          | 406-03-060-0002 | KNOB, 28-248, 28-248F, 28-248G       |
| 22          | 426-02-111-0012 | HEX STUD                                |             | 426-02-060-0001 | KNOB, 28-475X                        |
| 23          | 426-02-122-0003 | DOOR CATCH                              | 76          | 426-02-088-0003 | STOP                                 |
| 24          | 901-02-051-2860 | #08-32 X 1/4" FILL HD SCREW             | 77          | 426-02-078-0001 | PLUNGER                              |
| 25          | 904-01-032-2477 | FLAT WASHER                             | 77A         | 432-09-112-0004 | 3/8-16 X 2 HEX SCREW                 |
| 26          | 426-02-106-0004 | SHAFT                                   | 78          | 426-02-051-0001 | GEAR RING                            |
| 27          | 426-02-059-0001 | HINGE                                   | 78A         | 901-03-043-1917 | 10-32 X 5/8" SCREW                   |
| 29          | 426-02-014-0003 | SLIDING BRACKET                         | 78B         | 902-01-293-1513 | 10-32 HEX NUT                        |
| 30          | 905-04-141-3146 | PIN                                     | 79          | 426-02-132-0002 | SCALE                                |
| 31          | 902-04-010-1403 | 5/16-18 WING NUT                        | 80          | 931-01-013-1898 | KNOB, EMO                            |
| 32          | 901-04-261-4010 | 5/16-18 X 2" THUMB SCREW                | 81          | 436-01-014-0003 | LATCH                                |
| 33          | 928-01-603-1902 | SPRING                                  | 82          | 901-03-010-0229 | 1/4-20 X 1/2SOC HD SCREW             |
| 33A         | 904-01-033-1451 | WASHER                                  | 83          | 904-01-013-1885 | 1/4" FLAT WASHER                     |
| 34          | 904-07-010-5572 | WASHER                                  | 84          | 901-03-040-8015 | 1/4-20 X 1/2" BUTTON SCREW           |
| 35          | 902-02-050-1317 | 3/8-16 SQUARE NUT                       | 85          | 426-02-354-0056 | PULLEY GUARD                         |
| 36          | 426-02-327-0003 | KNOB, 28-248, 28-248F, 28-248G          | 86          | 426-02-071-0003 | PIN, EMO                             |
|             | 426-02-327-0004 | KNOB, 28-475X                           | 86A         | 921-01-110-0001 | BALL, CMO                            |
| 37          | 901-01-060-9062 | 3/4-10 X 2 3/4" HEX HD SCREW            | 87          | 426-02-074-0001 | BALL                                 |
| 38          | 904-01-010-1611 | 13/16" FLAT WASHER                      | 88          | 901-04-190-0225 | 5/16-18 X 1/4 HEX SOC. SET SCREW     |
| 39          | 904-02-020-1707 | LOCK WASHER                             | 89          | 426-02-752-0080 | LABEL                                |
| 40          | 902-01-100-1027 | 3/4-10 HEX NUT                          | 90          | 426-02-106-0013 | CAM SHAFT                            |
| 41          | 426-02-005-0007 | BASE, INCL.: REFS. 49 & 51              | 91          | 908-25-013-1915 | O-RING                               |
| 42          | 438-01-004-0082 | CABLE CLAMP                             | 92          | 426-02-019-0001 | CAM ACCUATOR                         |
| 43          | 901-03-010-3318 | #10-32 X 3/8" HEX SOC HD SCREW          | 93          | 902-03-023-1914 | 3/4 PUSH NUT                         |
| 44          | 905-04-071-4460 | 1/4" X 3/4" DOWEL PIN                   | 94          | 426-02-031-0004 | COVER                                |
| 45          | 902-07-030-7171 | NUT                                     | 95          | 928-01-803-1911 | SPRING                               |
| 47          | 920-04-020-5348 | BEARING                                 | 96          | 426-02-079-0002 | NUT                                  |
| 48          | 928-07-010-7353 | SPRING                                  | 97          | 426-02-067-0001 | HANDLE                               |
| 49          | 426-02-122-0004 | SPRING CLIP                             | 98          | 931-01-011-4091 | KNOB, 28-248, 28-248F, 28-248G       |
| 51          | 901-03-010-0763 | 1/4-20 X 3/8" HEX SOC HD SCREW          |             | 424-02-138-0005 | KNOB, 28-475X                        |
| 53          | 426-02-036-0001 | DUST DEFLECTOR                          | 99          | 905-01-010-6715 | 3/16 X 5/8 ROLL PIN                  |
| 54          | 426-02-111-0011 | PIVOT STUD                              |             |                 |                                      |
| 54A         | 904-15-062-0283 | E-RING                                  | *           |                 | NOT SHOWN ASSEMBLED                  |
| 55          | 426-02-088-0002 | TABLE TILT STOP                         |             |                 |                                      |
| 56          | 901-01-063-1656 | 1/4-20 x 3/4 HEX SCREW                  |             |                 |                                      |
| 57          | 901-01-063-1909 | 1/4-20 x 1/2 HEX SCREW                  |             |                 |                                      |
| 57A         | 928-06-013-1910 | WAVE WASHER                             |             |                 |                                      |



# REPLACEMENT PARTS

| <u>Ref.</u> | <u>Part No.</u> | <u>Description</u>                 | <u>Ref.</u> | <u>Part No.</u> | <u>Description</u>               |
|-------------|-----------------|------------------------------------|-------------|-----------------|----------------------------------|
| 100         | 426-02-055-0001 | GUIDE POST                         | 131         | 928-05-013-1378 | WAVE WASHER                      |
| *           | 426-02-355-0002 | UPPER BLADE GUIDE, CONST OF:       | 132         | 904-07-010-5571 | FIBER WASHER                     |
| 101         | 902-08-041-3064 | 5/16-24 SERRATED NUT               | 133         | 426-02-412-0004 | SCREW ASSY                       |
| 102         | 901-04-150-0297 | 5/16-24 X 1 3/4" HEX SOC SET SCREW | 134         | 901-03-012-2144 | #10-32 X 1/4" HEX SOC HD SCREW   |
| 103         | 901-04-190-0207 | 5/16-18 X 1/2" HEX SOC SET SCREW   | 135         | 951-01-010-7802 | POINTER                          |
| 106         | 426-02-106-0009 | HEXAGON SHAFT                      | 138         | 426-03-388-0001 | COLLAR ASSY, INCL:               |
| 107         | 426-02-089-0002 | BRACKET                            | 139         | 901-04-150-0208 | 1/4-20 X 1/4" HEX SOC SET SCREW  |
| 108         | 920-08-020-1457 | BEARING                            | 140         | 904-07-010-5571 | WASHER                           |
| 109         | 901-03-040-8015 | 1/4-20 X 1/2" BUTTON HD SCREW      | 141         | 901-02-030-0408 | 5/16-18 X 3/4" FLAT HD SCREW     |
| *           | 426-02-355-0003 | BRACKET ASSY, CONST OF:            | 142         | 426-02-314-0008 | TRUNNION SUPPORT ASSY, INCL:     |
| 110         | 426-02-014-0004 | BRACKET                            | 143         | 901-01-060-3125 | 5/16-18 X 2 1/2" HEX HD SCREW    |
| 111         | 901-04-190-0225 | 5/16-18 X 1/4" HEX SOC SET SCREW   | 144         | 1087640         | 5/16-18 LOCK NUT                 |
| 112         | 952-02-011-3254 | GUIDE BLOCK                        | *           | 426-02-355-0004 | LOWER BLADE GUIDE, CONST OF:     |
| 113         | 901-04-260-1520 | 5/16-18 X 1/2" THUMB SCREW         | 145         | 426-02-004-0001 | STEEL RAIL                       |
| 114         | 901-04-260-1528 | 5/16-18 X 1" THUMB SCREW           | 146         | 904-10-101-3166 | SPACER                           |
| 115         | 901-03-040-8015 | 1/4-20 X 1/2" BUTTON HD SCREW      | 147         | 426-02-014-0013 | ADJUSTING LINK                   |
| 116         | 426-02-054-0001 | BLADE GUARD                        | 148         | 901-03-030-8013 | 1/4-20 X 3/4" FLAT HD SCREW      |
| 117         | 426-02-063-0002 | TABLE INSERT                       | 149         | 952-02-011-3254 | GUIDE BLOCK                      |
| 118         | 426-02-391-0009 | TABLE, INCL:                       | 150         | 901-04-190-0225 | 5/16-18 X 1/4" HEX SOC SET SCREW |
| 119         | 426-02-071-0001 | PIN                                | 151         | 426-02-098-0001 | WEDGE                            |
| 120         | 901-01-063-1906 | 7/16-14 X 2 3/4" HEX HD SCREW      | 152         | 928-01-021-3387 | COIL SPRING                      |
| 121         | 426-02-027-0001 | CLAMP SHOE                         | 153         | 426-02-098-0001 | WEDGE                            |
| 122         | 426-02-095-0002 | TRUNNION                           | 154         | 426-02-106-0011 | SHAFT                            |
| 123         | 901-02-763-1530 | 1/4-20 X 1/2" HEX WASHER HD SCREW  | 155         | 426-02-014-0006 | SUPPORT BRACKET                  |
| 124         | 901-01-063-1907 | 7/16-14 X 4" HEX HD SCREW          | 156         | 952-02-011-3253 | ANGLE GUIDE BLOCK                |
| 125         | 426-02-027-0001 | CLAMP SHOE                         | 157         | 920-08-020-1457 | BEARING                          |
| 126         | 426-02-395-0005 | TRUNNION ASSY, INCL:               | 158         | 426-02-033-0001 | HANDLE, 28-248, 28-248F, 28-248G |
| 127         | 426-02-132-0001 | SCALE                              |             | 426-02-033-0002 | HANDLE, 28-475X                  |
| 128         | 903-03-023-1333 | RIVIT                              | 159         | 902-01-020-5438 | HEX NUT                          |
| 129         | 901-02-763-1530 | 1/4-20 X 1/2" HEX WASHER HD SCREW  | 160         | 902-01-213-1908 | LOCK NUT                         |
| 130         | 901-01-060-0602 | 5/16-18 X 1 1/4" HEX HD SCREW      |             |                 |                                  |
| 130A        | 904-02-010-1703 | 5/16" LOCKWASHER                   | *           |                 | NOT SHOWN ASSEMBLED              |



# REPLACEMENT PARTS

| <u>Ref. No.</u> | <u>Part No.</u> | <u>Description</u>                                      | <u>Ref. No.</u> | <u>Part No.</u> | <u>Description</u>                 |
|-----------------|-----------------|---|-----------------|-----------------|------------------------------------|
| 301             | 62-044          | 1.5 /2HP 1PH 120/240V MOTOR, 28-248, 28-248F, & 28-475X | 327             | 904-01-010-1605 | 3/8" FLAT WASHER                   |
|                 | 438-02-314-6002 | 1.5HP 3PH 200/230/460V MOTOR, 28-248G                   | 328             | 902-01-503-1514 | 5/16-18 FLANGE NUT                 |
| 302             | 1340100         | SWITCH COVER ASSY                                       | 329             | 438-01-011-0078 | BUSHING INSULATOR                  |
| 303             | 901-02-443-1899 | #06-32 X 1/4" ROUND HD                                  | 330             | 426-02-072-0005 | CABINET TOP                        |
| 304             | 402-07-104-5007 | SPACER  | 331             | 436-01-318-0027 | CABINET, 28-248, 28-745X           |
| 305             | 1340095         | SWITCH, 28-248, 28-475X                                 |                 | 436-01-318-0028 | CABINET, 28-248F, 28-248G          |
|                 | 438-01-017-0101 | SWITCH, 28-248F, 28-248G                                | 332             | 426-02-059-0006 | HINGE                              |
| 306             | 402-07-111-5002 | STUD  | 333             | 436-01-004-0022 | MOTOR BRACKET                      |
| 307             | 438-01-021-0149 | SWITCH PLATE  | 334             | 901-11-023-1476 | 5/16-18 X 3/4" CARRIAGE BOLT       |
| 308             | 422-04-116-0001 | GASKET  | 335             | 902-01-503-1865 | 5/16-18 FLANGE NUT                 |
| 309             | 438-01-011-0036 | INSULATOR   | 341             | 436-01-123-0013 | CABINET DOOR                       |
| 310             | 901-02-120-7533 | 1/4-20 X 2 3/4" TRUSS HD                                | 342             | 426-02-326-0002 | SHUTE                              |
| 311             | 438-01-011-0064 | PLUG  | 343             | 406-12-026-0001 | DUST PORT                          |
| 312             | 438-01-001-0079 | UTILITY BOX   | 344             | 901-02-453-1123 | 10-32 SCREW                        |
| 313             | 438-01-004-0069 | CORD CLAMP, 28-248, 28-475X                             | 345             | 426-02-068-0001 | LATCH                              |
|                 | 438-01-004-0007 | CORD CLAMP, 28-248F, 28-248G                            | 346             | 901-03-010-3322 | 10-24 SCREWS                       |
| 314             | 438-01-302-0720 | CORD, 28-248, 28-475X, INCL.: RE                        | 347             | 902-01-293-1513 | #10-32 KEPS NUT                    |
|                 | 438-01-302-0379 | CORD, 28-248F, INCL.: REF. 318                          | 350             | 901-11-023-1476 | 5/16-18 X 5/8" CARRIAGE BOLT       |
| 315             | 430-02-104-0005 | 1-3/4" SPACER   | 351             | 902-01-503-1865 | 5/16-18 FLANGE NUT                 |
| 316             | 904-02-020-1702 | 1/4" LOCKWASHER   | 352             | 901-11-020-0834 | 5/16-18 X 3/4" CARRIAGE BOLT       |
| 317             | 902-01-120-1034 | 1/4-20 HEX NUT  | 354             | 426-02-130-0002 | 9" DRIVEN PULLEY                   |
| 318             | 438-01-018-0041 | TERMINAL  | 355             | 901-04-150-0231 | 5/16-18 X 3/8" HEX SOC SET         |
| 319             | 438-01-302-0719 | CORD, INCL.:REF. 318                                    | 356             | 926-01-041-9366 | 2 1/4" MOTOR PULLEY                |
| 321             | 901-03-010-3318 | #10-32 X 3/8" SOC. HD                                   | 357             | 901-04-150-0231 | 5/16-18 X 3/8" HEX SOC SET         |
| 322             | 438-01-302-0719 | LVC CORD, 28-248F                                       | 358             | 49-035          | 54" OC V-BELT                      |
|                 | 438-01-302-0721 | LVC CORD, 28-248G                                       | 359             | 927-03-010-2650 | 3/16 X 3/16 X 1 3/8 KEY            |
| 324             | 438-01-011-0054 | INSULATING SLEEVE                                       | 364             | 436-01-725-0002 | MOTOR/SAW MTG. HARDWARE PACK       |
| 325             | 901-03-040-8015 | 1/4-20 X 1/2" BUTTON HD SCREW                           | 365             | 426-02-725-0011 | STAND ASSY. HARDWARE PACK          |
| *               | 426-02-389-0010 | STAND, CONST OF:  | 366             | 52-702          | 3PH LVC CONTROL, 28-248G, SEE NOTE |
| 326             | 901-01-060-0613 | 5/16-18 X 1 3/4" HEX HD                                 |                 | 52-704          | 1PH LVC CONTROL, 28-248F, SEE NOTE |
|                 |                 |   | *               |                 | NOT SHOWN ASSEMBLED                |

NOTE A: SEE LVC CONTROL INSTRUCTION SHEET FOR LVC REPLACEMENT PARTS.

---

## STANDARD SAFETY EQUIPMENT

In order to promote tool safety, Delta Machinery strictly enforces the policy of repairing or replacing any damaged or missing standard safety equipment on machines presented to Delta Authorized Service Centers for service/repairs. Any product that is presented to a Delta Authorized Service Centers for repairs which contains missing or damaged standard safety equipment will have that equipment repaired or replaced and the customer will be charged for any such service/repairs. Customers can avoid such charges only if the missing safety component is supplied to the service center at the time of repair.

*This parts list is provided to aid in obtaining service parts. Copies of the instruction and maintenance literature can be obtained through the Delta Technical Publications Department or through your service outlet.*