

BOSCH

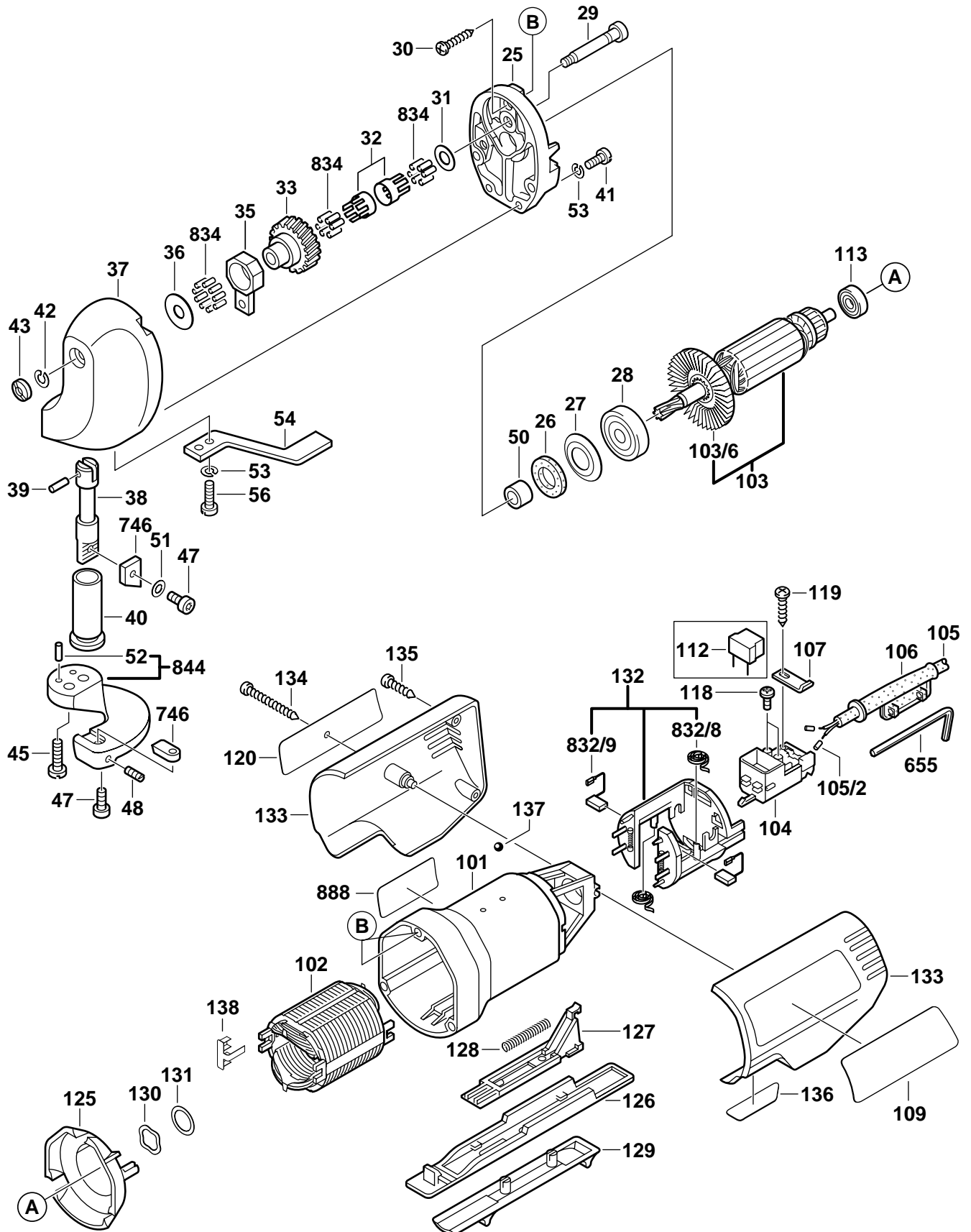
October 1997

220V - 230V

16 GAUGE SHEAR

Model 0601500103

GSC 1,6



GSC 1,6 16 GAUGE SHEAR

Pos.	Part Number	Description {Qty}	F/C	Pos.	Part Number	Description {Qty}	F/C
25	2 605 700 077	Intermediate Plate	38	105/2	1 900 452 012	Terminal Sleeve {2}	11
26	2 600 108 026	Felt Washer	77	106	2 600 703 035	Strain Relief	11
27	2 600 500 017	Washer	65	107	1 601 302 017	Cord Clamp	89
28	2 600 905 021	Ball Bearing	61	109	3 601 110 376	Label "GSC 16"	9
29	2 603 520 001	Axle	54	112	Not Required	Capacitor	14
30	2 910 611 020	Screw {3}	89	113	2 600 905 032	Ball Bearing	60
31	2 600 100 628	Shim 0.5mm	65	118	1 603 429 002	Screw {2}	89
32	2 600 913 034	Needle Cage {2}	56	119	2 910 611 219	Screw	89
33	2 606 319 040	Eccentric Gear	34	120	3 601 110 351	Label "Caution"	9
35	2 602 001 000	Connecting Rod	57	125	2 601 328 002	Baffle	24
36	2 600 100 519	Shim	65	126	2 608 001 005	Switch Rocker	9
37	3 605 806 161	Gear Housing	72	127	2 608 001 008	Switch Slide	9
38	2 603 070 005	Plunger	52	128	2 604 611 033	Spring	27
39	2 603 100 000	Wrist Pin	47	129	2 608 001 010	Switch Handle	9
40	2 600 422 000	Bushing	82	130	2 600 150 003	Spring Washer	65
41	2 910 011 120	Screw {2}	89	131	2 600 101 617	Shim 0.3mm	65
42	2 916 699 082	Lock Washer	89	132	2 604 337 050	Brush Holder Assembly w/pos. 832/8, 832/9	25
43	2 603 341 002	Nut	89				
45	2 910 011 156	Screw {2}	89	133	2 605 104 339	Motor Housing Cover	70
47	2 910 405 118	Screw {2}	89	134	2 910 211 283	Screw	89
48	2 912 031 084	Set Screw	89	135	2 910 211 207	Screw {2}	89
50	2 600 300 047	Sleeve	82	136	3 601 110 206	Label "On/Off"	9
51	2 916 011 010	Washer	65	137	2 603 230 001	Ball {2}	66
52	1 903 201 040	Needle {2}	56	138	2 601 329 037	Spring	27
53	2 916 681 005	Lock Washer {3}	89	655	1 907 950 004	Allen Wrench 3mm	9
54	2 601 335 004	Guard	92	+ 656	2 607 970 009	Feeler Gauge	9
56	2 910 021 118	Screw	89	746	3 607 010 028	Blade Set w/pos. 47, 48, 51	94
101	2 605 108 056	Motor Housing	71				
102	2 604 220 502	Field 230V	22	832/8	1 604 652 014	Brush Spring {2}	27
103	2 604 010 846	Armature w/Fan 230V	AW	832/9	2 604 320 911	Brush Set	26
103/6	2 606 610 064	Fan	23	834	3 607 010 031	Needle Set (44 pcs.)	56
104	2 607 200 311	Switch On/Off	15	844	2 608 042 000	Foot Plate w/pos. 52	88
105	1 604 460 046	Cord 230V	11	888	1 601 106 990	Nameplate	9

Service Notes: