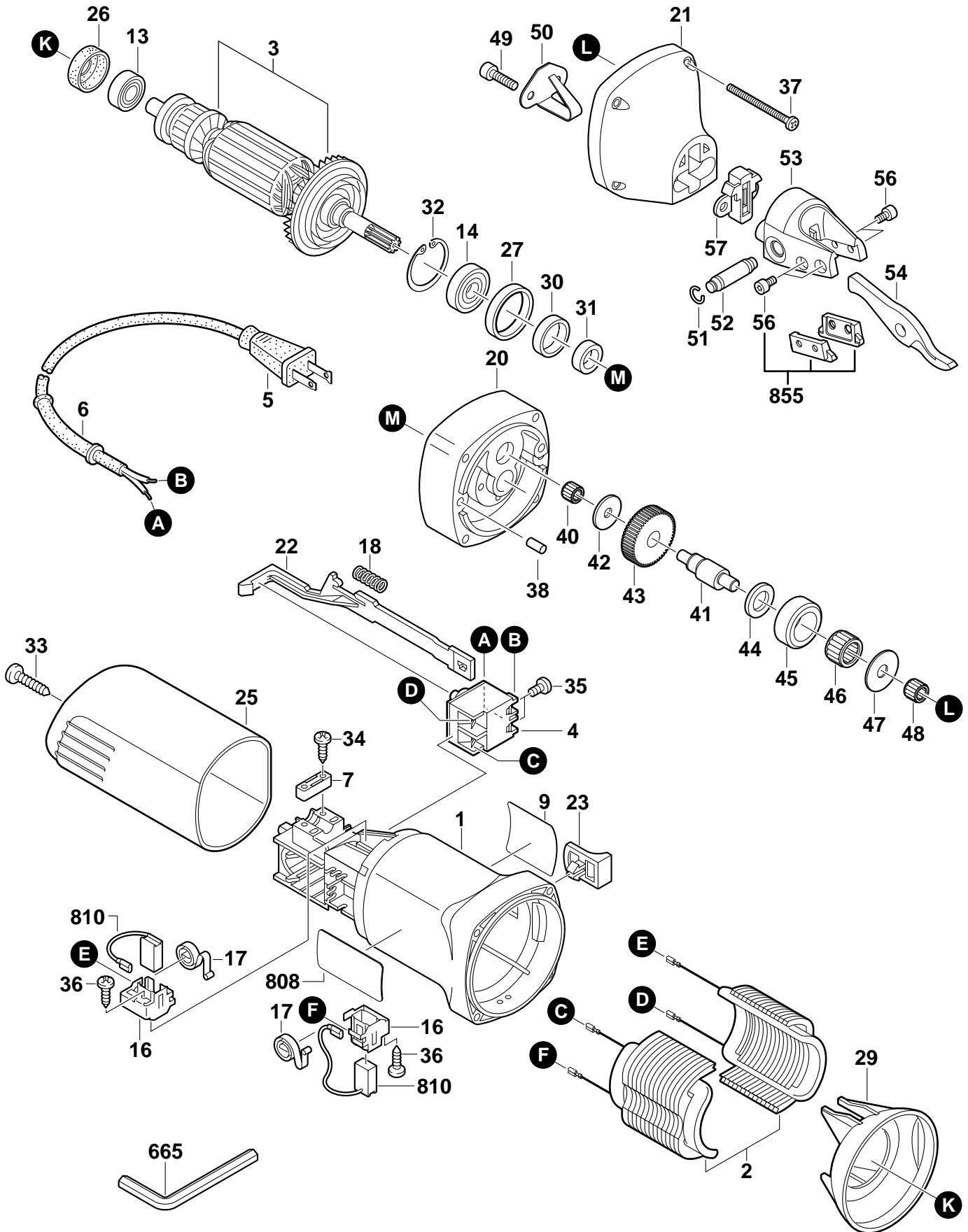


BOSCH

April 2001
INDUSTRIAL

16 GAUGE SHEAR
Model 0601521039

1521



1521 16 GAUGE SHEAR

Pos.	Part Number	Description {Qty.}	F/C	Pos.	Part Number	Description {Qty.}	F/C
1	3 605 102 090	Motor Housing	71	36	2 910 611 405	Screw {2}	89
2	2 609 160 012	Field 120V	22	37	2 910 611 082	Screw {4}	89
3	2 609 160 018	Armature w/Fan 120V	AW	38	2 917 510 094	Pin	66
4	1 607 200 146	Switch On/Off	15	40	2 600 914 010	Needle Bearing	56
5	3 604 460 555	Cord	11	41	3 606 110 008	Eccentric Shaft	53
6	2 600 703 013	Strain Relief	11	42	3 600 200 050	Washer	65
7	2 601 035 001	Cord Clamp	89	43	3 606 320 022	Gear	34
9	3 601 119 194	Nameplate	9	44	3 600 200 049	Ring	65
13	2 600 905 072	Ball Bearing	60	45	3 600 200 052	Bushing	56
14	2 600 905 021	Ball Bearing	61	46	3 600 917 019	Needle Bearing	56
16	1 604 336 035	Brush Holder {2}	25	47	3 600 200 051	Washer	65
17	1 604 652 014	Spring {2}	27	48	2 600 910 006	Needle Bearing	56
18	1 604 611 031	Spring	27	49	2 910 405 166	Screw {2}	89
20	3 605 700 160	Intermediate Flange	38	50	3 607 233 014	Spring Clip	9
21	3 605 806 191	Gear Housing	70	51	2 916 550 002	Retainer {2}	89
22	1 602 319 009	Switch Slide	64	52	3 607 233 015	Pin	66
23	2 609 100 019	Switch Button	63	53	3 607 233 016	Cutting Head	9
25	3 605 500 163	Housing Cover	70	54	2 608 635 406	Cutting Blade (16 gauge)	94
26	1 600 502 024	Rubber Bearing Sleeve	82	54.1	2 608 635 407	Cutting Blade (20 gauge)	94
27	3 600 206 015	O-Ring	78	54.2	2 608 635 408	Cutting Blade (curve)	94
29	1 600 591 023	Air Deflector	24	54.3	2 608 635 409	Cutting Blade (stainless)	94
30	3 600 929 037	Seal	77	56	2 910 140 116	Screw {4}	89
31	2 600 300 047	Sleeve	82	57	3 607 233 020	Seal	77
32	2 916 660 011	Retaining Ring	89	665	1 907 950 003	Allen Wrench 2.5mm	9
33	2 914 201 703	Screw	89	808	3 601 110 451	Nameplate	9
34	2 910 611 019	Screw {2}	89	810	1 607 014 144	Brush Set	26
35	2 910 641 082	Screw {2}	89	855	2 608 635 410	Stationary Blade Set	94

Service Notes: