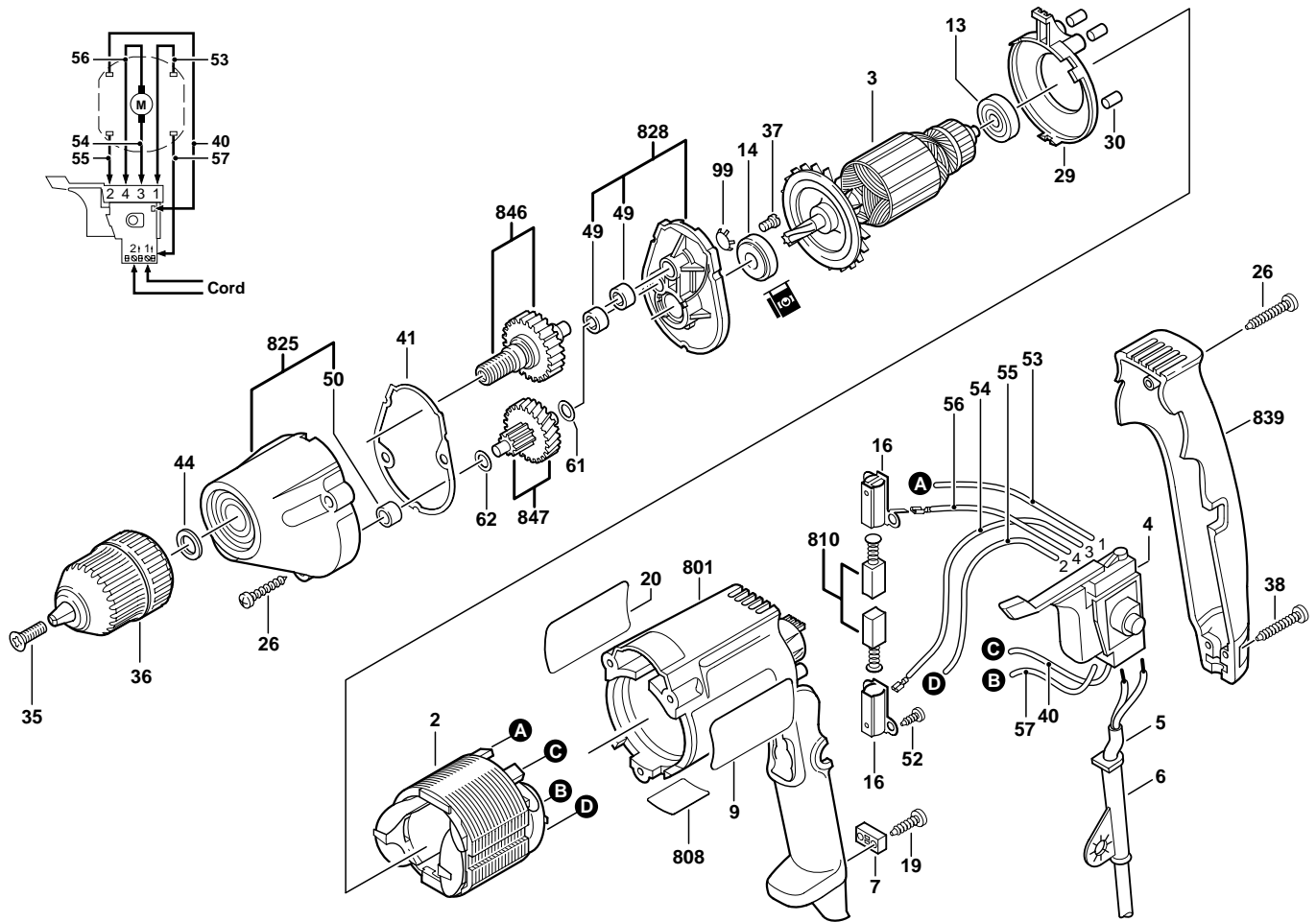


BOSCH

August 1997
INDUSTRIAL

3/8" DRILL
Model 0601026734

1026VSR
(.734)



| Pos. | Part Number | Description {Qty} | F/C | Pos. | Part Number | Description {Qty} | F/C |
|------|---------------|---------------------|-----|------|---------------|------------------------------------|-----|
| 2 | 2 610 910 309 | Field 120V | 22 | 49 | 3 600 910 505 | Needle Bearing {2} | 56 |
| 3 | 2 610 910 307 | Armature w/Fan 120V | AW | 50 | 3 600 910 506 | Needle Bearing | 56 |
| 4 | 3 607 200 523 | Switch VSR | 17 | 52 | 2 910 611 405 | Screw {4} | 89 |
| 5 | 3 604 460 555 | Cord 120V 18/2 | 11 | 53 | 3 604 448 501 | Cable 117mm | 10 |
| 6 | 2 600 707 060 | Strain Relief | 11 | 54 | 3 604 448 502 | Cable 48mm | 10 |
| 7 | 2 601 035 001 | Cord Clamp | 89 | 55 | 3 604 448 503 | Cable 78mm | 10 |
| 9 | 3 601 119 771 | Label "1026VSR" | 9 | 56 | 3 604 448 504 | Cable 88mm | 10 |
| 13 | 1 900 905 018 | Ball Bearing | 60 | 57 | 3 604 448 505 | Cable 122mm | 10 |
| 14 | 2 600 905 021 | Ball Bearing | 61 | 61 | 2 600 100 607 | Shim 0.3mm | 65 |
| 16 | 2 604 337 003 | Brush Holder {2} | 25 | 62 | 2 600 101 654 | Washer | 65 |
| 19 | 2 910 611 019 | Screw {2} | 89 | 99 | 3 600 171 504 | Lock Washer | 89 |
| 20 | 2 610 906 850 | Label "Caution" | 9 | 801 | 3 605 108 557 | Motor Housing | 71 |
| 26 | 2 910 615 082 | Screw {4} | 89 | 808 | 3 601 119 718 | Nameplate | 9 |
| 29 | 3 600 590 505 | Baffle | 24 | 810 | 2 604 321 914 | Brush Set | 26 |
| 30 | 3 602 391 503 | Rubber Buffer {3} | 24 | 825 | 3 605 190 513 | Gear Housing Assembly w/pos. 50 | 72 |
| 35 | 3 603 430 507 | Rev. Screw | 85 | 828 | 3 605 806 537 | Intermediate Plate Assy. w/pos. 49 | 38 |
| 36 | 2 610 910 300 | 3/8" Keyless Chuck | 91 | 839 | 3 605 133 521 | Handle Cover | 74 |
| 37 | 2 914 411 045 | Screw {2} | 89 | 846 | 3 606 120 553 | Spindle 3/8"-24 w/Gear | 32 |
| 38 | 2 910 615 022 | Screw {2} | 89 | 847 | 3 606 319 520 | Gear w/Pinion | 31 |
| 40 | 3 604 448 500 | Cable 162mm | 10 | | | | |
| 41 | 3 601 016 502 | Gasket | 79 | | | | |
| 44 | 3 600 102 505 | Washer | 65 | | | | |

+ = Not Illustrated * = As Required F/C = Failure Code AW = Refer to AW Labor Time Chart

S-B Power Tool Company Chicago IL 60646-5999

To: All Authorized and Factory Service Centers,
Field Sales and Internal Support Personnel

Re: Switch Change for models

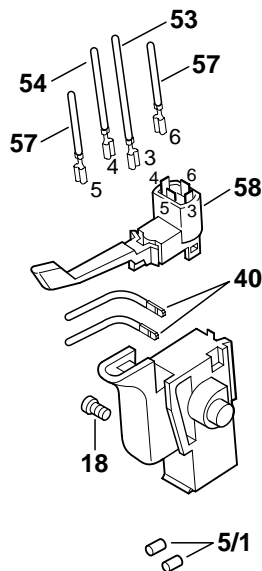
| | | | | |
|---------|---------|-----------|-----------|-------|
| 1000VSR | 1021VSR | 1028VSR | 1420VSR | B6100 |
| 1001VSR | 1022VSR | 1029VSR | 1420VSRSL | B6270 |
| 1002VSR | 1023VSR | 1404VSR | 1421VSR | B6280 |
| 1003VSR | 1026VSR | 1404VSRSL | 1422VSR | B6950 |
| 1020VSR | 1027VSR | 1405VSR | 1422VSRQ | B6980 |

Please insert this bulletin into the "Technical Bulletins" section of your Bosch Parts Manual, only after making any additions or notes to your Illustrated Parts List(s).

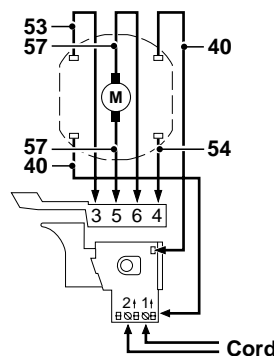
Please be advised that a new switch configuration has been introduced for the above listed models. This change will take place in newer produced versions and effects all service requirements.

| Switch Kit 2 610 994 891 contains: | <u>Pos.</u> | <u>Part Number</u> | <u>Description</u> |
|------------------------------------|-------------|--------------------|---------------------|
| | 5/1 | 1 900 452 012 | Terminal Sleeve {2} |
| | 18 | 2 603 410 001 | Screw {2} |
| | 40 | 2 604 448 146 | Cable 110mm {2} |
| | 53 | 2 604 448 137 | Cable 80mm |
| | 54 | 2 604 448 100 | Cable 68mm |
| | 57 | 2 604 448 104 | Cable 60mm {2} |
| | 58 | 2 607 200 338 | Reverse Switch |

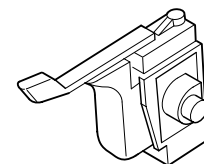
Use 2 610 994 891
Switch Kit



New Wiring Diagram



Old 3 607 200 523
No Longer Available



Note: The terminal sleeves (pos. 5/1) need to be installed on the tips of the power cord to insure a good connection with the switch. Rotation adjustments are accomplished by swapping the brush cables on the reverse switch (locations 5 & 6).

All questions should be directed to your Authorized Service Manager.

Product Service Department